

ALLIED OIL & GAS SERVICES, LLC 061835

Federal Tax I.D. # 20-8651475

REMIT TO P.O. BOX 93999
SOUTHLAKE, TEXAS 76092

SERVICE POINT:
Cement Pumps

DATE <i>1-4-14</i>	SEC <i>17</i>	TWP <i>16S</i>	RANGE <i>24W</i>	CALLED OUT	ON LOCATION	JOB START <i>4:30 AM</i>	JOB FINISH <i>5:30 PM</i>
LEASE <i>Trusa</i>	WELL# <i>2</i>	LOCATION <i>Ransom 3W 1N 14W</i>			COUNTY <i>P.255</i>	STATE <i>KS</i>	
OLD OR NEW (Circle one) <i>(N)</i>			<i>Winto</i>				

CONTRACTOR *Pickrell Drilling #1* OWNER _____

TYPE OF JOB *Surface*
 HOLE SIZE *12 1/4* T.D. _____ CEMENT *265*
 CASING SIZE *5 7/8* DEPTH *273* AMOUNT ORDERED *265 sks class A*
 TUBING SIZE _____ DEPTH _____ *37 cc 24 gal*
 DRILL PIPE *4 1/2* DEPTH _____
 TOOL _____ DEPTH _____

PRES. MAX _____ MINIMUM _____
 MEAS. LINE _____ SHOE JOINT _____
 CEMENT LEFT IN CSG. *15 ft*
 PERFS. _____
 DISPLACEMENT *13,580 bbls Freshwater*
 EQUIPMENT _____

PUMP TRUCK CEMENTER *Dustin Chambers*
 # *366* HELPER *Ben Newell*
 BULK TRUCK _____
 # *61710* DRIVER *C.J. Guest TWS*
 BULK TRUCK _____
 # _____ DRIVER _____

COMMON	<i>265</i>	@ <i>17.90</i>	<i>4,743.50</i>
POZMIX		@	
GEL	<i>85</i>	@ <i>23.40</i>	<i>117.00</i>
CHLORIDE	<i>747</i>	@ <i>1.80</i>	<i>597.00</i>
ASC		@	
		@	
		@	
		@	
		@	
		@	
		@	
HANDLING	<i>286.57</i>	@ <i>2.48</i>	<i>710.69</i>
MILEAGE	<i>13.07 x 20 x</i>	<i>2.60</i>	<i>679.64</i>
			TOTAL <i>6,848.43</i>

REMARKS:

*pump 5 bbls freshwater ahead
 with 150 sks cement
 Displace 13,580 bbls freshwater
 9 5/8 in
 Cement didn't circulate
 Plug down 5:20 AM
 Pump down Ben lin pipe
 Add 125 sks cement
 Cement to 2 circulate*

CHARGE TO: ~~_____~~
 STREET *Pickrell Drilling*
 CITY _____ STATE _____ ZIP _____

SERVICE

DEPTH OF JOB	_____		
PUMP TRUCK CHARGE	<i>1512.35</i>		
EXTRA FOOTAGE	@		
MILEAGE <i>Hum 20</i>	@ <i>7.70</i>	<i>154.00</i>	
MANIFOLD	@		
<i>Hum 20</i>	@ <i>4.40</i>	<i>88.00</i>	
	@		
			TOTAL <i>1,754.35</i>

PLUG & FLOAT EQUIPMENT

_____	@		
_____	@		
_____	@		
_____	@		
_____	@		
			TOTAL _____

To: Allied Oil & Gas Services, LLC.
 You are hereby requested to rent cementing equipment and furnish cementer and helper(s) to assist owner or contractor to do work as is listed. The above work was done to satisfaction and supervision of owner agent or contractor. I have read and understand the "GENERAL TERMS AND CONDITIONS" listed on the reverse side.

SALES TAX (If Any) _____
 TOTAL CHARGES *8,602.68*
 DISCOUNT *1,720.53* IF PAID IN 30 DAYS
6,882.14

PRINTED NAME *Michael Smolgor*
 SIGNATURE *Michael Smolgor*
Thank You!



Services, Inc.

CHARGE TO: Pickrell Drilling
 ADDRESS
 CITY, STATE, ZIP CODE

TICKET 26010

PAGE 1 OF 2

1. SERVICE LOCATIONS Neosho, KS WELLS/PROJECT NO. A 42 LEASE LA-Fon Trust COUNTY/PARISH Leas STATE KS CITY Ransom DATE 10 Jan 14 OWNER

2. TICKET TYPE SERVICE SALES CONTRACTOR

3. WELLS TYPE CO TOOLS RIG NAME/NO. Development JOB PURPOSE cannot long string WELLS PERMIT NO. location ORDER NO.

4. REFERRAL LOCATION oil INVOICE INSTRUCTIONS

PRICE REFERENCE	SECONDARY REFERENCE/ PART NUMBER	ACCOUNTING			DESCRIPTION	MILEAGE	QTY.	UM	QTY.	UM	UNIT PRICE	AMOUNT
		LOC	ACCT	DF								
575					TRK 114	20	in				600	12000
579					Pump Charge	1	ea				2000	200000
402					Centralizer	4 1/2	in				6500	390000
403					Concut Basket	4 1/2	in				27500	550000
407					Insect Floats/line w/ water filter	4 1/2	in				30500	325000
408					DIY tape	4 1/2	in				300000	3200000
417					DIY latched down plug \$60/ft	4 1/2	in				200000	200000

LEGAL TERMS: Customer hereby acknowledges and agrees to the terms and conditions on the reverse side hereof which include, but are not limited to, **PAYMENT, RELEASE, INDEMNITY,** and **LIMITED WARRANTY** provisions.

MUST BE SIGNED BY CUSTOMER OR CUSTOMER'S AGENT PRIOR TO START OF WORK OR DELIVERY OF GOODS

DATE SIGNED [Signature] TIME SIGNED AM A.M. P.M.

REMIT PAYMENT TO:
 SWIFT SERVICES, INC.
 P.O. BOX 466
 NESS CITY, KS 67560
 785-798-2300

SURVEY

OUR EQUIPMENT PERFORMED WITHOUT BREAKDOWN? YES NO

WE UNDERSTOOD AND MET YOUR NEEDS? YES NO

OUR SERVICE WAS PERFORMED WITHOUT DELAY? YES NO

WE OPERATED THE EQUIPMENT AND PERFORMED JOB CALCULATIONS SATISFACTORILY? YES NO

ARE YOU SATISFIED WITH OUR SERVICE? YES NO

CUSTOMER DID NOT WISH TO RESPOND

PAGE TOTAL	1	658500
TOTAL	19,979,95	

CUSTOMER ACCEPTANCE OF MATERIALS AND SERVICES The customer hereby acknowledges receipt of the materials and services listed on this ticket.

APPROVAL [Signature]

Thank You!



Seawater, Inc.

PO Box 466
Ness City, KS 67560
Off: 785-798-2300

TICKET CONTINUATION

TICKET No. 26010

CUSTOMER Pickrell Drilling

WELL LA For Trust #02

DATE 10 June 14

PAGE 2 OF 2

PRICE REFERENCE	SECONDARY REFERENCE/ PART NUMBER	ACCOUNTING			TIME	DESCRIPTION	QTY		UNIT		UNIT PRICE	AMOUNT
		LOC	ACCT	DF			QTY	UM	QTY	UM		
330							350	sk			18.50	6475.00
326						60/90 gal (2% gal)	125	sk			11.50	1437.50
325						STANDARD cement	75	sk			14.50	1087.50
383						S&T	325	lb			0.20	65.00
385						CFR-1	100	lb			4.50	450.00
276						Floccle	135	lb			2.50	332.50
290						D-Air	5	gal			42.00	210.00
281						KAL Liquid	4	gal			25.00	100.00
281						Multiflush	500	gal			1.35	675.00
581						SERVICE CHARGE					2.00	1100.00
583						MILEAGE CHARGE					1.00	595.96
TOTAL							5520.6					595.96

CONTINUATION TOTAL 12458.46

JOB LOG

SWIFT Services, Inc.

DATE 20 Jan 14 PAGE NO.

CUSTOMER Pickrell Drilling

WELL NO. A #2

LEASE La Fon TRUST

JOB TYPE Cement long string

TICKET NO. 26010

CHART NO.	TIME	RATE (BPM)	VOLUME (BBL) (GAL)	PUMPS		PRESSURE (PSI)		DESCRIPTION OF OPERATION AND MATERIALS
				T	C	TUBING	CASING	
								125 sk 60/40 poz (2% gel) 75 sk STD w/ 10% salt 350 sk 5MD cement w/ 1/4" floccle TD 4526' 109, 75 4 1/2" casing set 4516' shoe j 20.1' DV #62 1887' Cement Bucket 1, 62 Centralizer shoe, 1, 2, 3, 4, 61
	2330							on loc TRK 114
Jan 11	0120							start 4 1/2 casing in well
	0315							Drop ball - circulate
	0325	3 1/2	12			210		mix Pump 50 gal mud flush
		3 1/2	20			200		Pump 20 bbl KCL flush
	0335	3 1/2	29			200		Mix 60/40 poz mix (2% gel) 125 sk @ 13.6 ppq
		3 1/2	16			200		Mix 5MD cement (10% salt) 75 sk @ 15.8 ppq
	0400							Drop 1st stage plug - workup & line
	0407	6				200		Displace plug
		6	62			600		
	0420	6	70			1400		Land plug
								Release pressure to truck - dried up
	0430							Drop bomb
	0510					1200		open DV tool
		3	20			200		Pump 20 bbl KCL flush
			7					Shut in casing
								Plug RH - MH 300sk - 200sk
								open casing
	0620	4	155			200		MIX 5MD cement 300sk @ 11.2 ppq
								Drop 2nd stage plug
	0710	3				200		Displace plug
		3	500			650		
	0715	3	27			1500		hand plug - close DV tool
								→ cement to surface ←
	0720							Release pressure to truck - dried up
	0725							300sk mixed 40 to p. 4
	0725							wash truck
								Rack up
	0800							job complete
								Blow Flint & save



**TRILOBITE
TESTING, INC.**

DRILL STEM TEST REPORT

Pickrell Drilling Co Inc

100 S Main Ste 505
Wichita KS 67202-3738

ATTN: Jerry Smith

17 16s 24w Ness

#2 LaFon Trust " A "

Job Ticket: 50413

DST#: 1

Test Start: 2014.01.09 @ 21:56:00

GENERAL INFORMATION:

Formation: **Mississippian**

Deviated: No Whipstock: 2538.00 ft (KB)

Time Tool Opened: 01:10:00

Time Test Ended: 08:39:00

Test Type: Conventional Bottom Hole (Initial)

Tester: Jim Svaty

Unit No: 54

Interval: **4454.00 ft (KB) To 4526.00 ft (KB) (TVD)**

Total Depth: 4526.00 ft (KB) (TVD)

Hole Diameter: 7.88 inches Hole Condition: Fair

Reference Elevations: 2538.00 ft (KB)

2529.00 ft (CF)

KB to GR/CF: 9.00 ft

Serial #: 8289 Outside

Press@RunDepth: 199.82 psig @ 4459.00 ft (KB)

Start Date: 2014.01.09

End Date:

2014.01.10

Start Time: 21:56:02

End Time:

08:39:00

Capacity: 8000.00 psig

Last Calib.: 2014.01.10

Time On Btm: 2014.01.10 @ 01:09:45

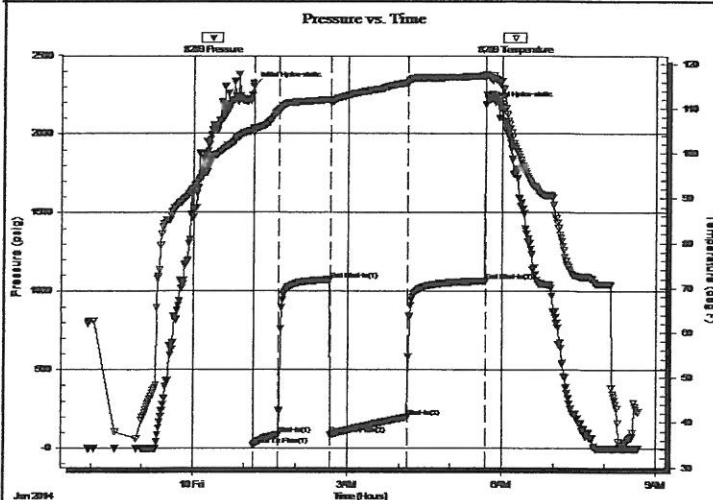
Time Off Btm: 2014.01.10 @ 05:40:15

TEST COMMENT: 30-IFP- BOB in 30 min.

60-ISIP- Surface Blow

90-FFP- BOB in 26 min.

90-FSIP- Surface Blow



PRESSURE SUMMARY

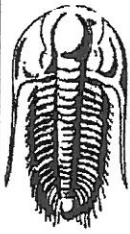
Time (Min.)	Pressure (psig)	Temp (deg F)	Annotation
0	2305.35	105.65	Initial Hydro-static
1	21.38	104.65	Open To Flow (1)
30	88.50	109.56	Shut-In(1)
90	1072.71	112.05	End Shut-In(1)
90	89.79	111.72	Open To Flow (2)
180	199.82	115.73	Shut-In(2)
270	1065.16	117.28	End Shut-In(2)
271	2184.74	117.66	Final Hydro-static

Recovery

Length (ft)	Description	Volume (bbl)
117.00	GOCM 10%g 15%o 75%m	0.58
63.00	GMCO 25%g 25%m 50%o	0.88
189.00	GMCO 20%g 30%m 50%o	2.65
93.00	GCO 20%g 80%o	1.30
0.00	GIP 345	0.00

Gas Rates

Choke (inches)	Pressure (psig)	Gas Rate (Mcf/d)



**TRILOBITE
TESTING, INC.**

DRILL STEM TEST REPORT

FLUID SUMMARY

Pickrell Drilling Co Inc
100 S Main Ste 505
Wichita KS 67202-3738
ATTN: Jerry Smith

17 16s 24w Ness
#2 LaFon Trust " A "
Job Ticket: 50413 DST#: 1
Test Start: 2014.01.09 @ 21:56:00

Mud and Cushion Information

Mud Type: Gel Chem	Cushion Type:	Oil API: 40 deg API
Mud Weight: 9.00 lb/gal	Cushion Length: ft	Water Salinity: ppm
Viscosity: 54.00 sec/qt	Cushion Volume: bbl	
Water Loss: 6.40 in ³	Gas Cushion Type:	
Resistivity: ohm.m	Gas Cushion Pressure: psig	
Salinity: 3000.00 ppm		
Filter Cake: 1.00 inches		

Recovery Information

Recovery Table

Length ft	Description	Volume bbl
117.00	GOCM 10%g 15%o 75%m	0.575
63.00	GMCO 25%g 25%m 50%o	0.884
189.00	GMCO 20%g 30%m 50%o	2.651
93.00	GCO 20%g 80%o	1.305
0.00	GIP 345	0.000

Total Length: 462.00 ft Total Volume: 5.415 bbl
Num Fluid Samples: 0 Num Gas Bombs: 0 Serial #:
Laboratory Name: Laboratory Location:
Recovery Comments:

Serial #: 8289

Outside

Fickrell Drilling Co Inc

#2 LaFon Trust "A"

DST Test Number: 1

Pressure vs. Time

