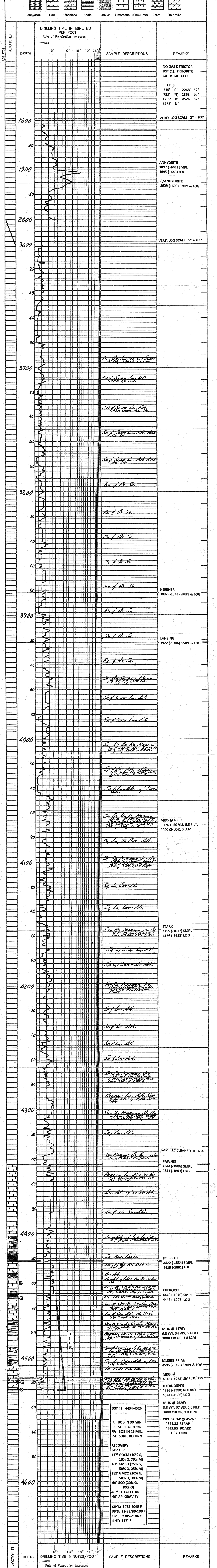


GEOLOGIST'S REPORT
 DRILLING TIME and SAMPLE LOG

COMPANY: PICKRELL DRILLING COMPANY, INC.	ELEVATIONS
LEASE: #2 LA FON TRUST "A"	KB. 2538
FIELD: RAMSOM NW	D-F. 2538
LOCATION: 1880' FSL & 1520' FEL	G.L. 2538
SEC. 17	TWP. 16
COUNTY: NESS	STATE: KANSAS
CONTRACTOR: COMPANY TOOLS, RIG #	CASING
SPUD: 01/01/14	R.T.D. 4526
R.T.D. 4526	PRODUCTION: 4.172 @ 4616'
MUD WP: 5500	TYPE MUD: CHEMICAL
API No. 15-153-25712	ELECTRICAL SERVICES
	PIONEER: RAG
SAMPLES SAVED FROM: 3700	TO: RTD
DRILLING TIME KEPT FROM: 1800/3600	TO: 2000/RTD
SAMPLES EXAMINED FROM: 3700	TO: RTD
GEOLOGICAL SUPERVISION FROM: 3650	TO: RTD
GEOLOGIST ON WELL: JERRY A. SMITH	



COMPANY: PICKRELL DRILLING COMPANY, INC.	ELEVATION: 2538 KB
LEASE: #2 LA FON TRUST "A"	
LOCATION: 1880' FSL & 1520' FEL	SEC 17 TWP 16 RGE 24 W
COUNTY: NESS	STATE: KANSAS