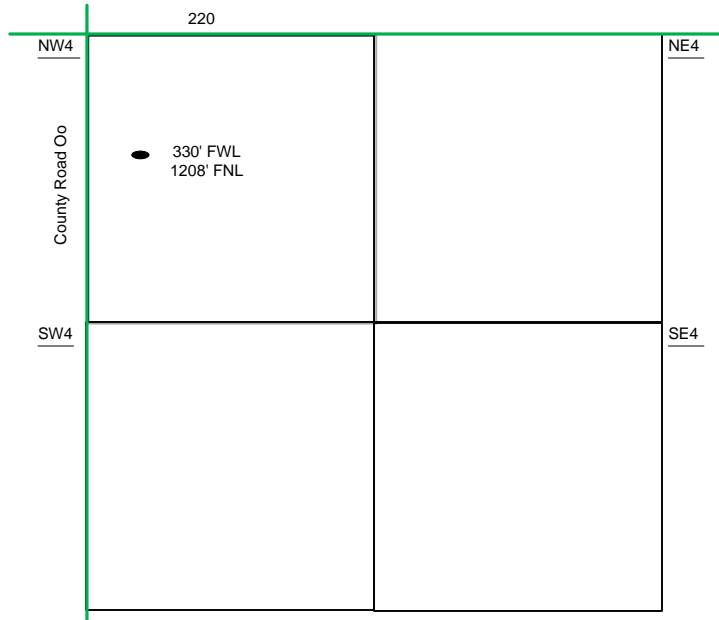
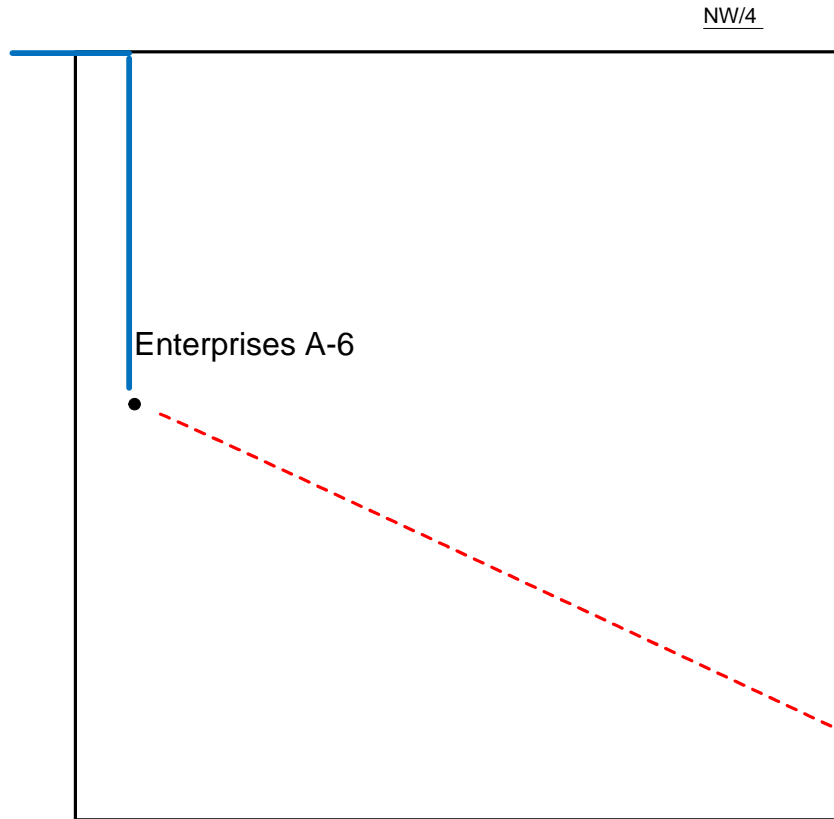


Proposed Plan of Construction
 Enterprises A-6
 Sec 21 T30S-R32W
 Hakell County, KS



Sec 35 – T26S – R33W



Proposed Details of
 NW/ Sec 21 – T30S – R32W

Note-Drawing **Not** to Scale

Proposed Site Diagram
 Enterprises A-6
 March 27, 2014

