

LINN OPERATING INC. BRASSFIELD #5 ATU-132
 256' FNL
 200' FWL
 NW/4 OF NW/4 OF NW/4 OF NW/4 OF
 SECTION 34, T-29-S, R-38-W
 LATITUDE: 37°29'20.33055" N
 LONGITUDE: 101°28'12.83082" W
 GROUND ELEVATION: 3104.3'



Keller
 Surveying &
 Mapping

2330 B LAKEVIEW DRIVE
 AMARILLO, TEXAS 79109
 PH: (806) 418-5263

DRAWN BY: MTK

APPROVED BY: JOK

SCALE: 1" = 200'

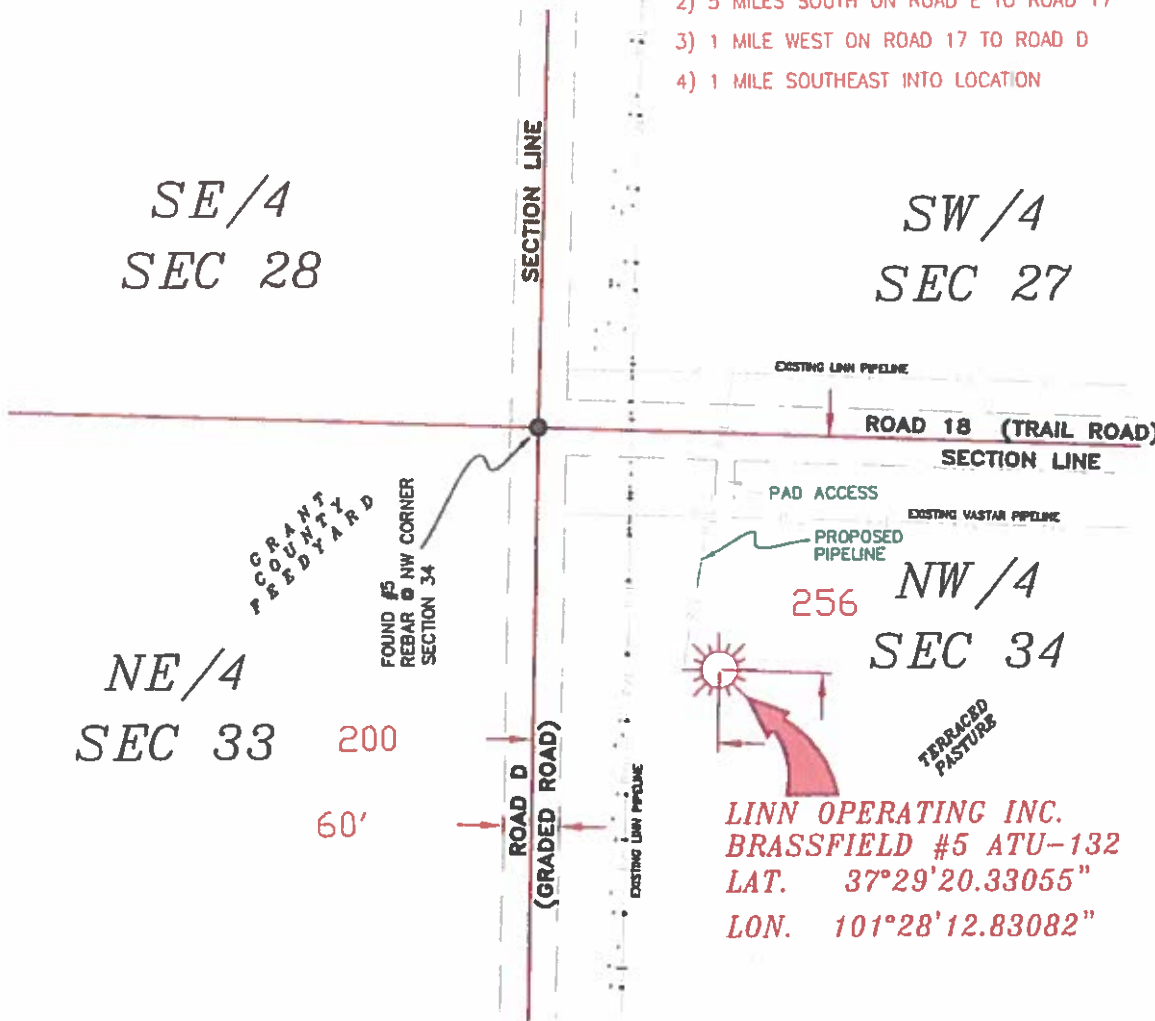
DATE: 11/05/13



2225 W. OKLAHOMA AVE.
 ULYSSES KANSAS 67880
 PH: (620) 356-6940
 FAX: (620) 356-6950

DRIVING DIRECTIONS:

- BEGINNING AT INTERSECTION OF US HWY 160 & HWY 25
- 1) 5 MILES WEST ON HWY 160 TO ROAD E
 - 2) 5 MILES SOUTH ON ROAD E TO ROAD 17
 - 3) 1 MILE WEST ON ROAD 17 TO ROAD D
 - 4) 1 MILE SOUTHEAST INTO LOCATION



- NOTES:**
- 1) THIS PLAN DOES NOT REPRESENT A TRUE BOUNDARY SURVEY. THE FOOTINGS AND TIES SHOWN ARE FROM LINES OF OCCUPATION WHICH MAY NOT BE ACTUAL PROPERTY LINES.
 - 2) CONTRACTOR TO CONTACT ONE-CALL FOR FOREIGN UTILITY LOCATIONS PRIOR TO ANY EXCAVATION OR CONSTRUCTION.
 - 3) NW/4 SEC 27 UN-LOC'D

LINN OPERATING INC.
BRASSFIELD #5 ATU-132
 LAT. 37°29'20.33055"
 LON. 101°28'12.83082"



T-29-S, R-38-W
 GRANT COUNTY, KANSAS

LINN OPERATING INC.
BRASSFIELD #5 ATU-132
 SECTIONS 27, 28, 33 & 34
 T-29-S, R-38-W
 GRANT COUNTY, KANSAS



JOHN DAVID KELLER, L.S. NO. 1518

PLAT AND CERTIFICATION OF ACREAGE ATTRIBUTABLE TO A GAS WELL

Kansas Corporation Commission, Conservation Division
 Finney State Office Building, 130 South Market, Room 2078
 Wichita, Kansas 67202

API NUMBER 15- _____

OPERATOR LINN Operating, Inc.
 LEASE Brassfield
 WELL NUMBER 5 ATU-132
 FIELD Hugoton-Panoma

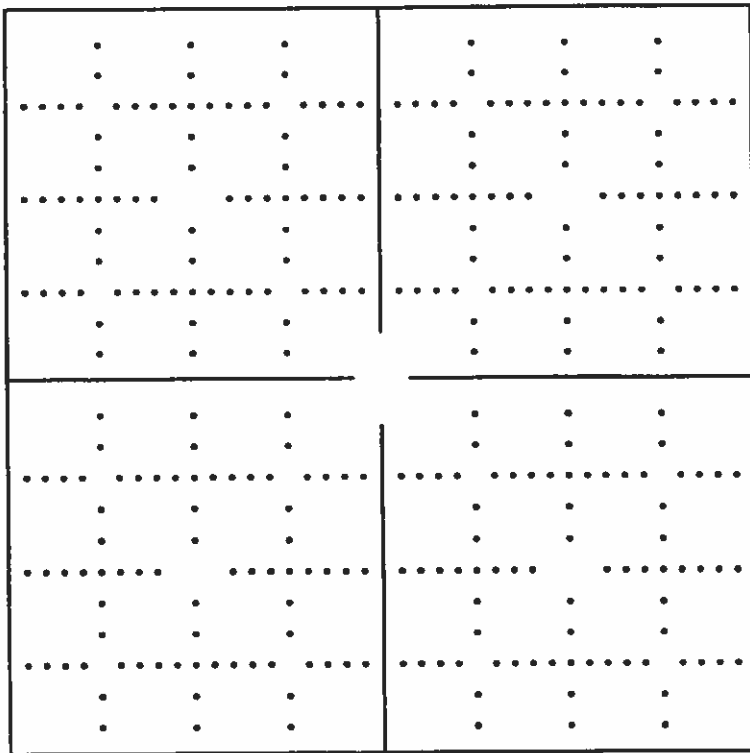
NUMBER OF ACRES ATTRIBUTABLE TO WELL 640
 QTR/QTR/QTR OF ACREAGE NW - NW - NW

LOCATION OF WELL: COUNTY Grant

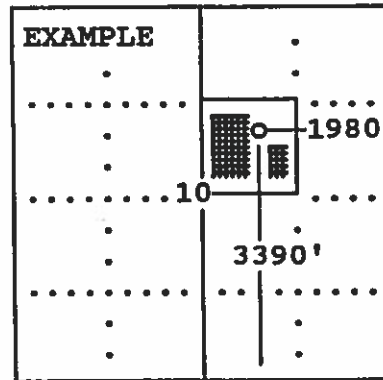
256 N feet from south/north line of section
200 W feet from east / west line of section

SECTION 34 TWP 29 (S) RG 38W E/W
 IS SECTION X REGULAR or IRREGULAR
 IF SECTION IS IRREGULAR, LOCATE WELL FROM
 NEAREST CORNER BOUNDARY. (check line below)
 Section corner used: NE NW SE SW

(Show the location of the well and shade attributable acreage for prorated or spaced wells).
 (Show the footage to the nearest lease or unit boundary line; and show footage to the nearest common source supply well).



see attached map



SEWARD CO.

The undersigned hereby certifies as Regulatory Compliance Advisor (title) for
LINN Operating, Inc. (Co.), a duly authorized agent, that all

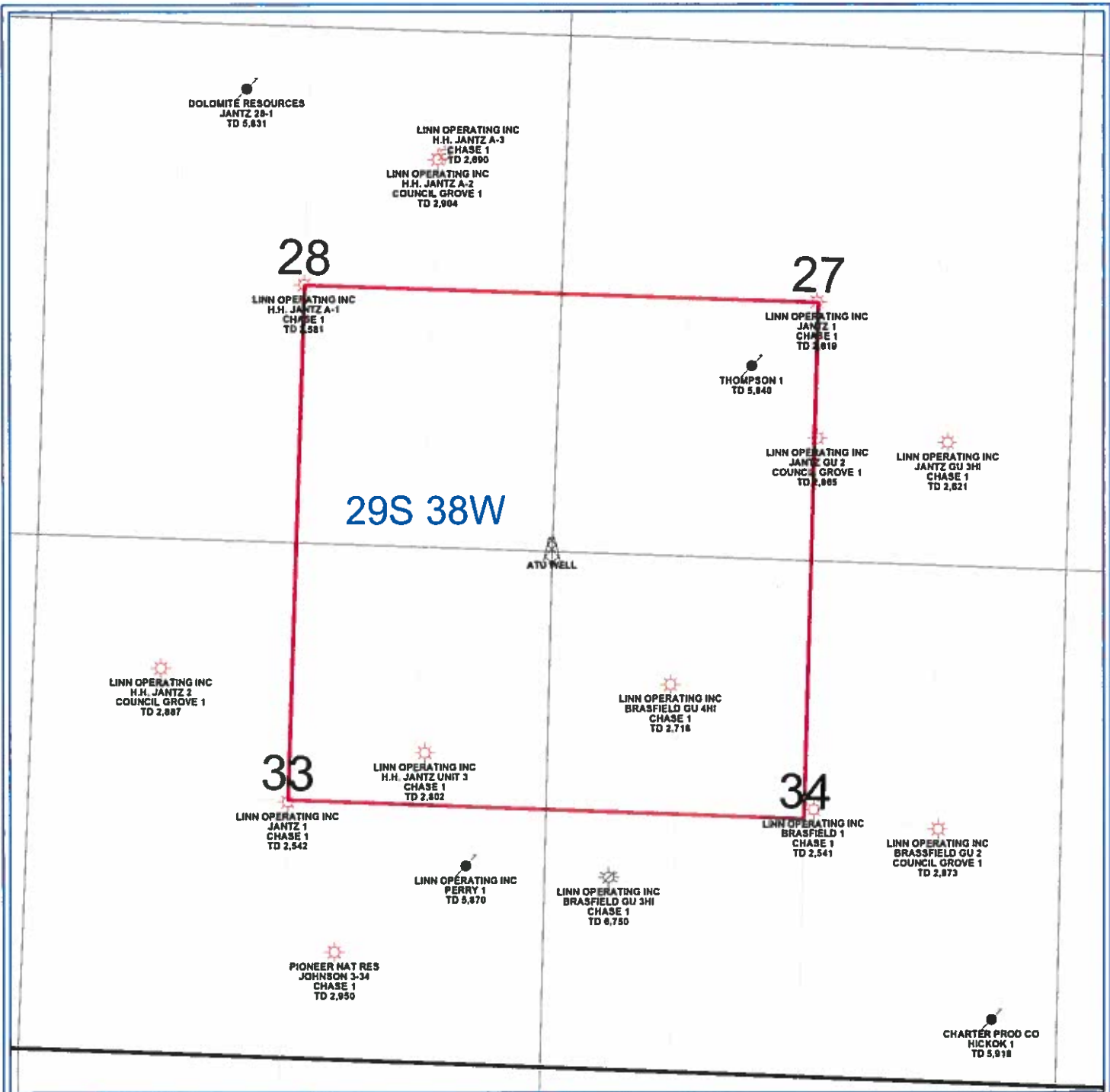
information shown hereon is true and correct to the best of my knowledge and belief, that all acreage claimed attributable to the well named herein is held by production from that well and hereby make application for an allowable to be assigned to the well upon the filing of this form and the State test, whichever is later.

Signature *Shawn H. Loren*

Subscribed and sworn to before me on this 24th day of March, 19 2014

Jerry Belinde Callahan
 Notary Public

My Commission expires 12/27/2015



PETRA 2/10/2013 1 43:13 PM





LINN Operating Inc

Hugoton Kansas

ATU Location

29S - 38W Grant Co.



- WELL SYMBOLS**
-  ATU Well Location
 -  Gas Well
 -  Plugged and Abandoned
 -  Plugged & Abandoned Gas Well