

GEOLOGICAL REPORT

DRILLING TIME & SAMPLE DESCRIPTION

REPORT PREPARED BY: DOUGLAS V. DAVIS JR.

OPERATOR TREK AEG, LLC.

LEASE COBERLY #2 AP#15-063-221-47-00-00

FIELD TILLER TOWNSHIP

LOCATION 1865' FSL, 1550' FWL

SEC. 16 TWNSP. 15S RANGE 27W

COUNTY GOVE STATE KANSAS

CONTRACTOR Mallard Drilling Rig #1

SPUD 1/24/14 COMP 2/21/14

LTD 4300' RTD 4321' MUD UP 3420'

SAMPLE SAVED FROM 3400' TO 4321'

DRILLING TIME FROM 3400' TO 4321'

FORMATION SAMPLE ELOG DATUM A B

Heebner Sh. 3640 (-1207)

Toronto Ls. 3660 (-1227)

Lansing Gp. 3673 (-1220)

Muncie Cr. 3682 (-1227)

LKC "A" 3692 (-1227)

LKC "B" 3720 (-1270)

LKC "D" 3726 (-1273)

LKC "E" 3760 (-1307)

LKC "F" 3770 (-1317)

LKC "G" 3792 (-1339)

Muncie Creek Sh. LKC "H" 3852 (-1399)

LKC "I" 3886 (-1433)

LKC "J" 3912 (-1459)

LKC "K" 3934 (-1481)

LKC "L" 3965 (-1512)

Cherokee Gp. 4195 (-1742)

Cherokee Ss. 4250 (-1797)

Mississippian 4263 (-1805)

Marmaton Gp. 4038' (-1575)

Pawnee Ls. 4139' (-1676)

Ft. Scott Ls. 4177' (-1714)

Cherokee Gp. 4195' (-1742)

Cherokee Ss. 4250' (-1797)

Mississippian 4263' (-1805)

Marmaton Gp. 4038' (-1575)

Pawnee Ls. 4139' (-1676)

Ft. Scott Ls. 4177' (-1714)

Cherokee Gp. 4195' (-1742)

Cherokee Ss. 4250' (-1797)

Mississippian 4263' (-1805)

Marmaton Gp. 4038' (-1575)

DOUGLAS V. DAVIS JR.
GEOLOGIST
LICENSED KANSAS
482

ELEVATION

K.B. 2433'

D.F.

G.L. 2428'

DEPTH MEASURED FROM KB

CASING SURFACE 216' @ 211" w/000 sx

PRODUCTION 4-1/2"

LOGGING

DILL/CDC/CL

| | |
|---------|--|
| REMARKS | It was recommended to run 4-1/2" production casing on this well. |
|---------|--|

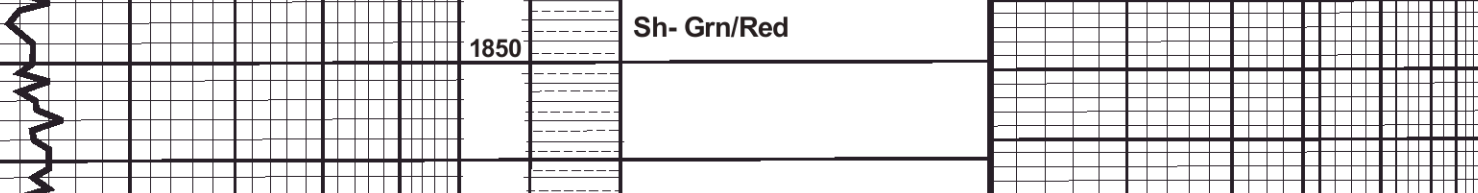
DST DST #1 3885-3912', Lansing "J" 30"-60"-30"-60" Strong Blow#12" 110' GIP IHP 1916# FHP 1986# BHT 124 F IFP 26-117# FFP 124-152# ISIP 452# FSP 448# Rec. 82" GIP, 107" GCO, 62" GCMCO, 62" OCM 180' OSMW

DST #2 3922-3934', LKC "K" 30"-60"-30"-60" Weak Blow#14' Weak Blow FF IHP 1938# FHP 1939# BHT 121 F IFP 27-100# FFP 115-144# ISIP 944# FSP 926# Rec. 82" GIP, 107" GCO, 62" GCMCO, 120' GCMCO, 60' OSMW

DST #3 3963-3975', LKC "L" 30"-60"-30"-60" Strong Blow#18' NGTS IHP 1944# FHP 1924# BHT 117 F IFP 21-53# FFP 61-63# ISIP 1134# FSP 1105# Rec. 90' GIP, 30' GCMCO, 120' GWMCO

DST #4 4156-4195', Ft. Scott, 30"-60"-30"-60" Weak Blow#17' Weak Blow FF IHP 2058# FHP 2005# BHT 115 F IFP 20-26# FFP 23-30# ISIP 204# FSP 114# Rec. 30' OCM

LEGEND

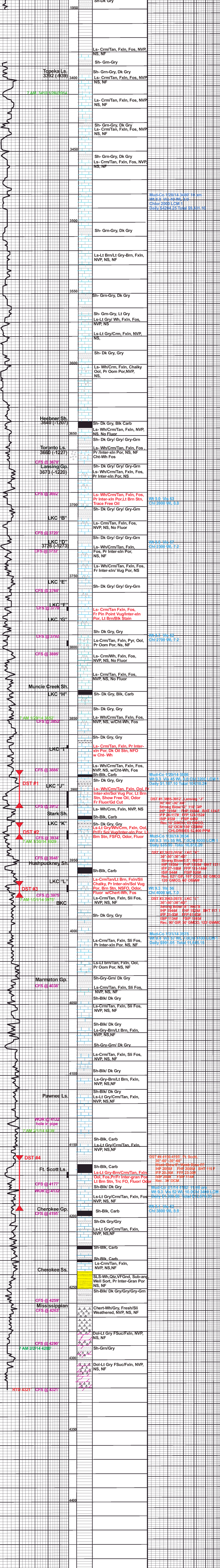


DRILLING TIME IN MINUTES PER FOOT: 5", 10", 15", 20", 25"

LITHOLOGY

SAMPLE DESCRIPTION

HOT WIRE: 5, 10, 50, 100, 500, 1000



DRILLING TIME IN MINUTES PER FOOT: 5", 10", 15", 20", 25"

LITHOLOGY

SAMPLE DESCRIPTION

HOT WIRE: 5, 10, 50, 100, 500, 1000

CONTRACTOR Mallard Drilling Rig #1 LOCATION 3415' FNL 1515' FWL

LEASE Coberly #2 SEC. 16 TWNSP. 15S RANGE 27W

ELEVATION 2433' RTD 4321' LTD 4322' COUNTY Gove STATE Kansas

DST