

TRANS PACIFIC OIL CORPORATION

TRANS PACIFIC OIL



API #15-135-22056

GEOLOGIST'S REPORT DRILLING TIME AND SAMPLE LOG

Geologist on Well Alex Chapin

LEASE Hayworth Trust "A" # 1-8

FIELD Rush Center North

LOCATION 3100' FSL&1175' FEL

SEC 8 TWSP 18S RGE 18W

COUNTY Rush STATE Kansas

CONTRACTOR American Eagle #3

SPUD 2/24/14 COMP 3/5/14

RTD 3954' (-1856) LTD 3938' (-1840)

MUD UP 3400 TYPE MUD CHEMICAL

SAMPLES SAVED FROM 3400 TO RTD

DRILLING TIME KEPT FROM 3100 TO RTD

SAMPLES EXAMINED FROM 3400 TO RTD

GEOLOGICAL SUPERVISION FROM 3200

REFERENCE WELL Suttle A 1-9, 9-18S-18W,

ELEVATIONS

KB 2098

DF _____

GL 2091

Measurements Are All From Kelly Bushing

CASING

CONDUCTOR _____

SURFACE 8 5/8" @1292'

PRODUCTION NONE

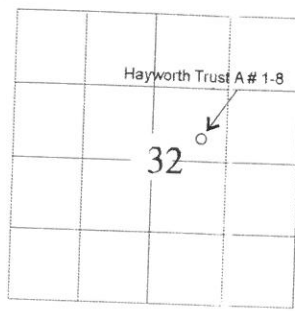
ELECTRICAL SURVEYS

DIL, DUCP, SONIC

NABORS

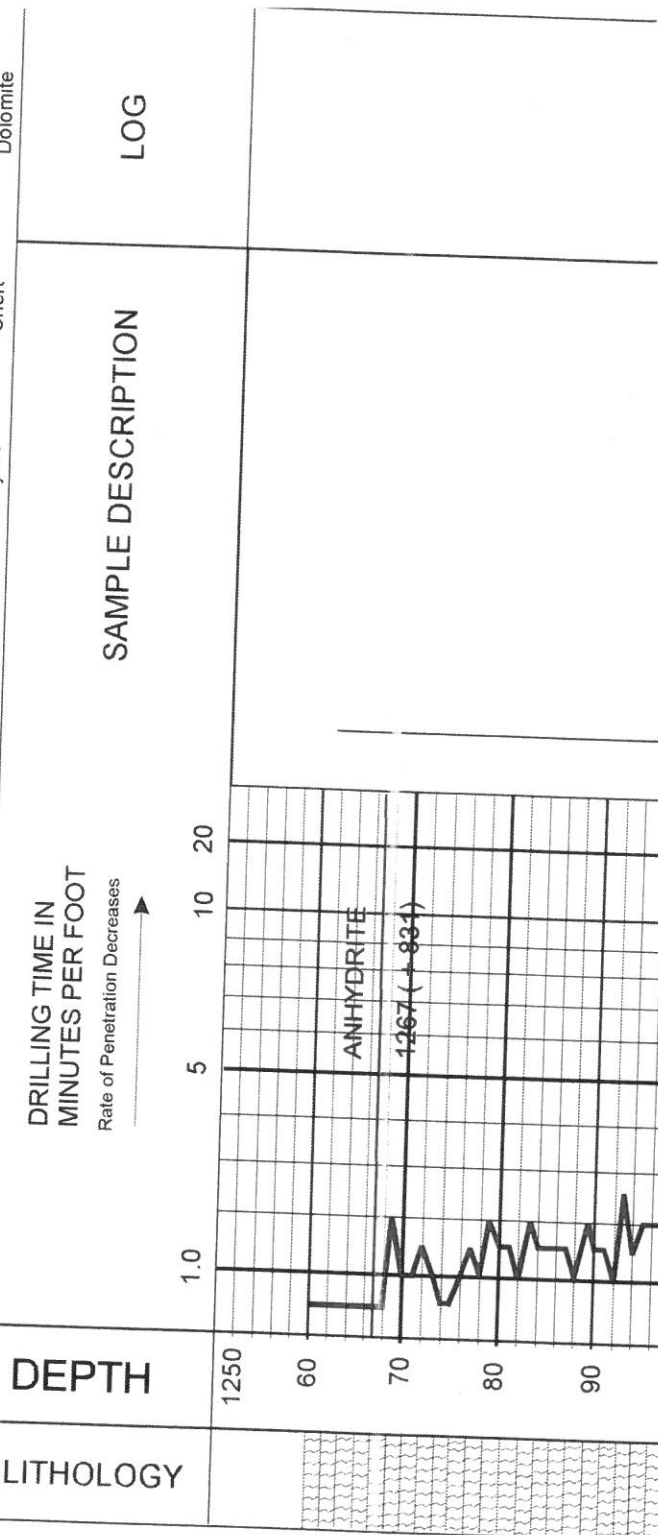
REMARKS The Hayworth Trust A # 1-8 did not drill out as anticipated. As a result the tops were low to our reference well the Suttle A 1-9, which is a producer. No shows were seen in the Arbuckle or the Lansing B zone. After examining the logs, it was decided to run a straddle test on the Lansing B zone, which turned up negative results. It was decided to plug and abandon the Hayworth Trust A #1-8. Note LTD is 16 feet high to RTD.

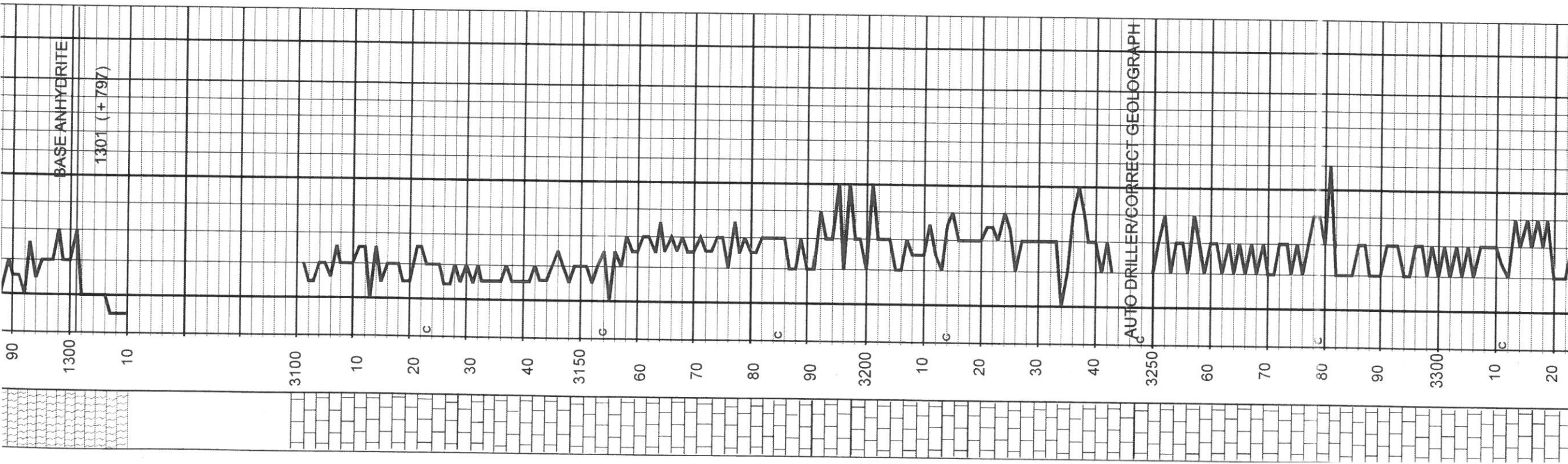
| Formation | Sample Tops | E-log Tops | Struct Pos. |
|----------------|--------------|--------------|-------------|
| Anhydrite | 1267 (+ 831) | 1267 (+831) | -10 |
| Base Anhydrite | 1301 (+ 797) | 1300 (+798) | -10 |
| Topeka | 3120 (-1022) | 3127 (-1029) | -5 |
| Heebner | 3434 (-1336) | 3445 (-1347) | -4 |
| BKC | 3748 (-1650) | 3755 (-1657) | flat |
| Marmaton | 3828 (-1730) | 3835 (-1737) | -11 |
| Arbuckle | 3866 (-1768) | 3872 (-1774) | -14 |

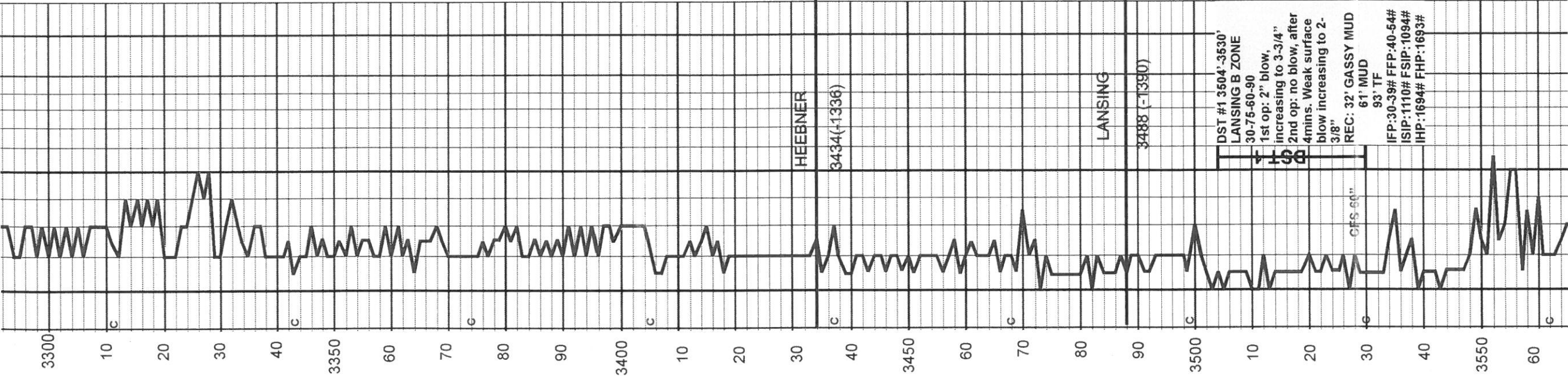


LEGEND

- Anhydrite
- Sandstone
- Limestone
- Shale
- Carb Sh
- Cherty LS
- Chert
- Dolomite

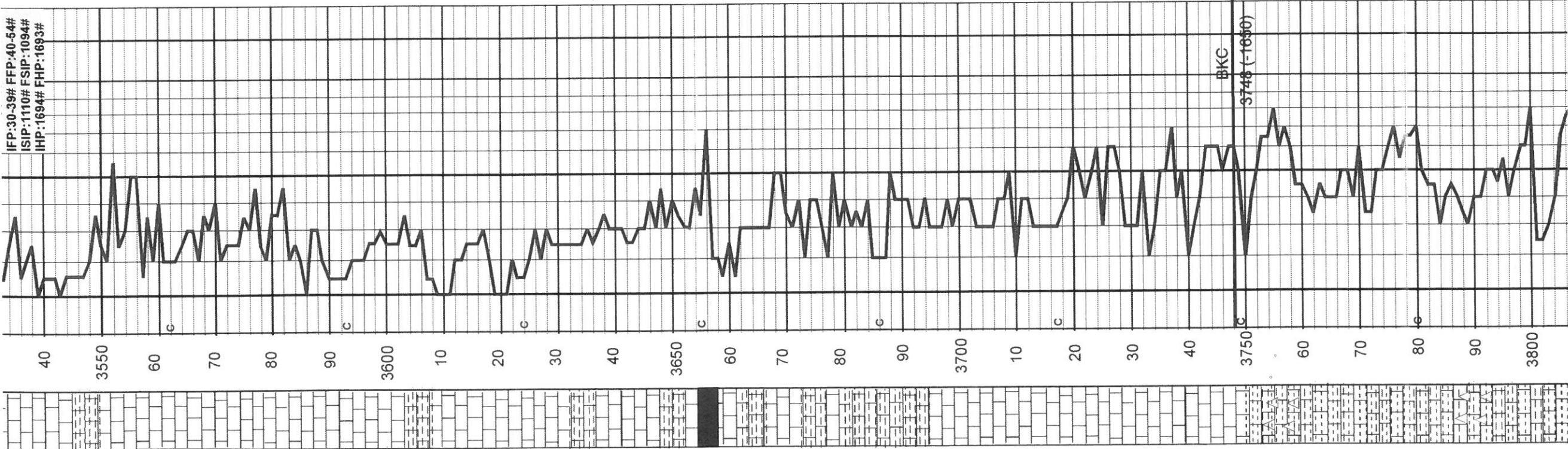




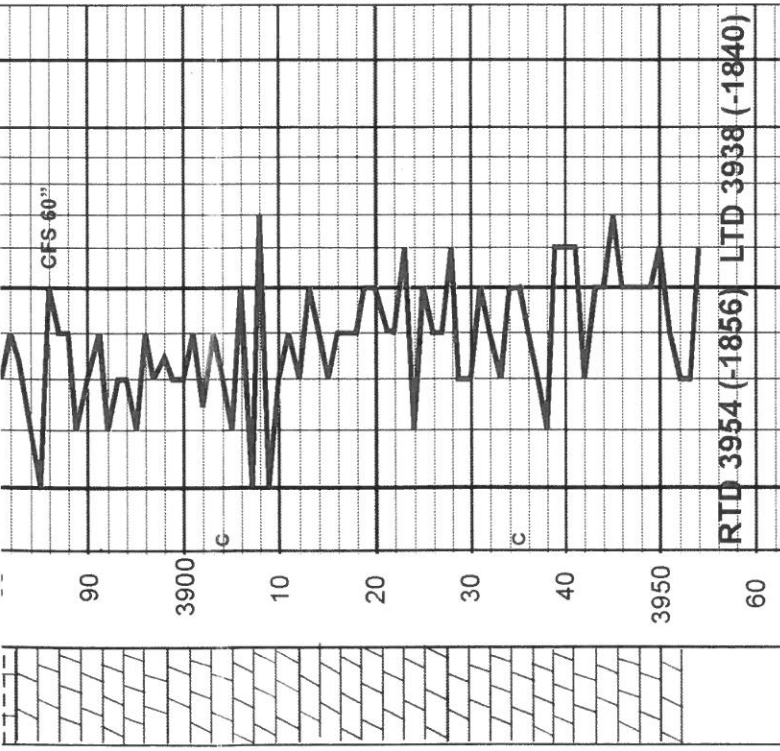


-Lm, gry, vfxln-fxln, dns, intxinØ
 -Lm, gry, fxln-mxln, foss, ooØ, dns
 -Lm, gry, fxln-mxln, foss, oomldc, dns
 -Lm, gry, fxln-mxln, foss, oo, oomldcØ, dns
 -Cht, wht
 -Shale, black, lam, carb
 -Lm, gry-brn, foss, fxln, oo, oomldcØ, dns
 -Lm, tn-gry, fxln, intxinØ, dns
 -Lm, gry-wht, chky-sft, vfxln, dns, intxinØ
 -Lm, gry-wht, chky-sft, vfxln, dns, intxinØ
 -Lm, wht, chky-sft, vfxln
 -Sh, blk-rd-grn
 -15" Lm, tn-gry, fxln-mxln, dns, intxinØ, v/sli odor
 -30" Lm, tn-wht, fxln, vugy, intxinØ, NS, no odor
 -45" Lm, wht-gry, fxln-mxln, foss, ooØ, vugy, NS, v/sli odor.
 -Lm, gry, fxln, oo, foss, sft, -Sh, blk-rd-grn
 -Lm, tn, fxln, oo, oomldcØ, sli, vugy, foss, -Sh, blk-grn
 -Lm, tn, mxln, oo, foss, intxinØ
 -Lm, tn-wht, vfxln-mxln, oo,

IFP:30.39# FFP:40-54#
ISIP:1110# FSIP:1094#
IHP:1694# FHP:1693#



- Lm, gry, fxln, oo, foss, sft,
- Sh, blk-rd-grn
- Lm, tn, fxln, oo, oomldcø, sli
- vugy, foss,
- Sh, blk-grn
- Lm, tn, mxln, oo, foss, intxlnø
- Lm, tn-wht, vfxln-mxln, oo,
- oomldcø, foss, fossmldc, dns
- Lm, wht, chky-sft, vfxln, foss
- Lm, wht, chky-sft, vfxln
- Lm, wht, fxln, intxlnø
- Lm, wht, fxln, foss, sli oo
- Lm, wht, vfxln-fxln, chky-sft, oo,
- foss
- Sh, blk
- Lm, wht, vfxl-mxln, oo, foss,
- chky-sft
- Sh, blk
- Lm, wht, chky-blky, oo, vfxln-fxln,
- foss
- Lm, wht-gry, vfxln-fxln, oo, foss,
- hrd, intxlnø
- Sh, blk
- Sh, blk, carb
- Lm, tn-gry, hrd-dns, vfxln
- Sh, blk, carb
- Lm, tn-gry, hrd-dns, vfxln
- Sh, blk car
- Lm, tn, vfxln, hrd-dns
- Sh, blk
- Lm, wht-tn, vfxln, dns, chky-sft,
- sli oo, foss
- Lm, wht, vfxln, hrd-dns, oo,
- oomldcø
- Lm, wht, vfxln, hrd-dns
- Lm, wht, vfxln-fxln, hrd-dns, sli
- oo
- Lm, gry-wht, vfxln, hrd, oo
- Lm, wht-tn, vfxln, hrd-dns
- Sh, blk-rd-gry
- Cht, tn
- Lm, wth, vfxln, chky-sft,
- Sh, blk-gry-red
- Lm, wht, vfxln, hrd-dns, foss
- Sh, blk-rd-brn
- Sh, blk-red-carb
- Cht, wth
- Lm, wht, fxln, oo, dns, intxlnø
- Sh, blk-grn-rd



- Dol, wht, suc, fxln, intxln∅, NS, no odor
- Dol, wht, suc, fxln-mxln, intxln ∅ NS, no odor
- Dol, wht, suc, fxln, intxln∅, ns. no odor
- Dol, AA
- Dol, AA
- Dol, AA

NOTE: WHILE DRILLING THIS WELL THERE WAS MANY AUTO DRILLER PROBLEMS, WHICH RESULTED IN SKEWED DRILL TIME AND MAY HAVE CAUSED THE GEOLOGRAPH TO GET OFF CORRECT DEPTH.

TRANS PACIFIC OIL CORPORATION
 DST#1 3504-3530 LANS. B STRADDLE
 Start Test Date: 2014/03/04
 Final Test Date: 2014/03/05

HAYWORTH TRUST A #1-8
 Formation: DST#1 3504-3530 LANS. B STRADDLE
 Pool: WILDCAT
 Job Number: M620

HAYWORTH TRUST A #1-8

