



# Musgrove

**Geologist's Report**

**Company:** Blue Ridge Petroleum Corporation  
**Lease:** Sauvage #3-11  
**Field:** Wildcat  
**Location:** SE-NW-SE-SW (756 FSL & 1785 FWL)  
**Sec:** 11 **Twsp:** 3S **Rge:** 29W  
**County:** Decatur **State:** Kansas  
**GL:** 2564 **KB:** 2573

**Contractor:** Southwind Drilling Rig #8  
**Spud:** 2/27/14 **Comp:** 3/10/14  
**RTD:** 3880 **LTD:** 3859  
**Mud Up:** 3100' **Type Mud:** Chemical/Displaced

**Samples Saved From:** 3200' to RTD  
**Drilling Time Kept From:** 3200' to RTD  
**Samples Examined From:** 3300' to RTD  
**Geological Supervision From:** 3300' to RTD  
**Geologist on Well:** Clint Musgrove

**Surface Casing:** 8 5/8" @ 223'  
**Production:** None

**Logs:** By Nabors: CNL/CDL, DIL, MEL, SONIC

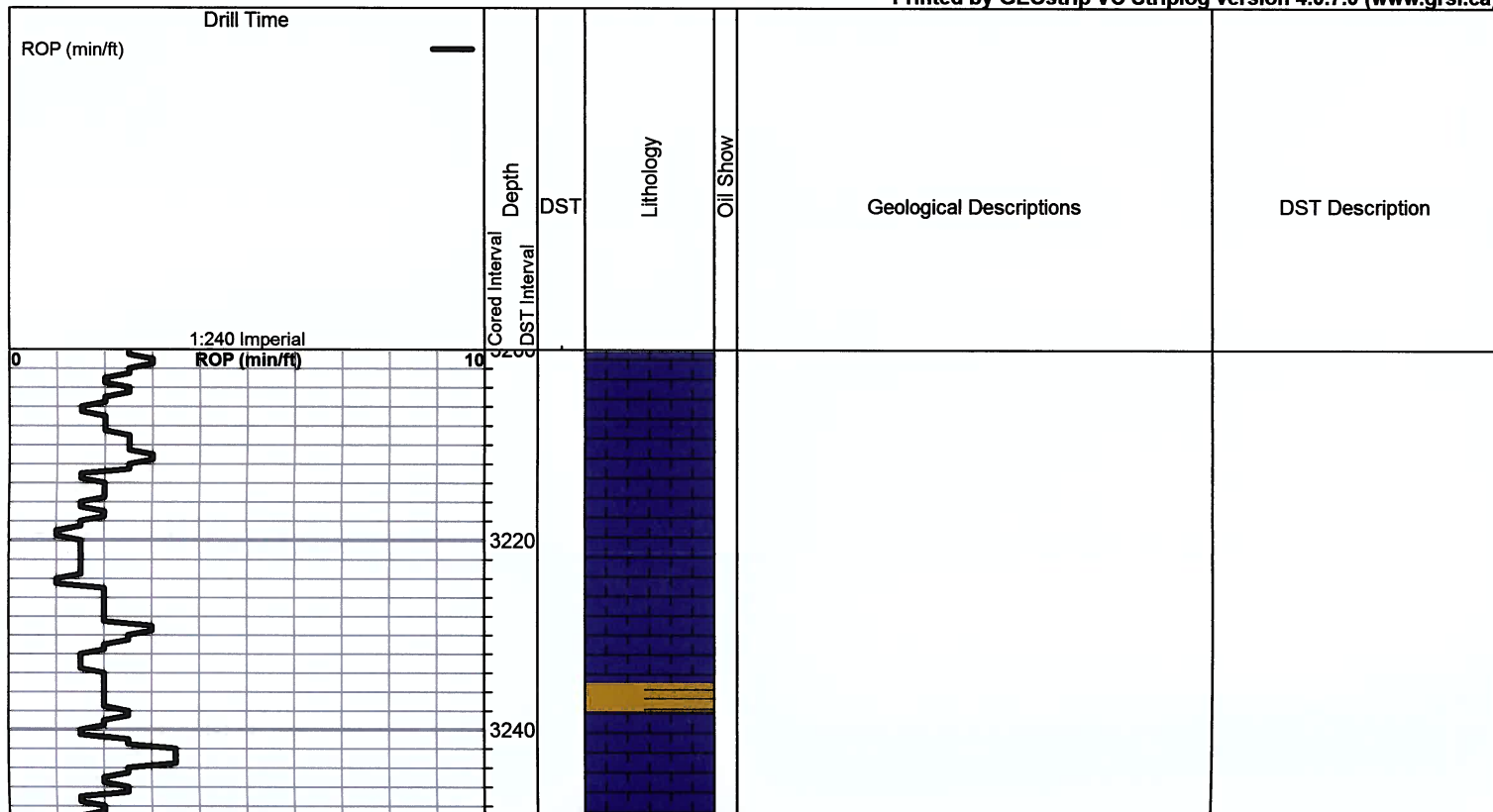
**ROCK TYPES**

 Lmst fw<7	 shale, gry	 Shcol
 shale, gm	 Carbon Sh	 Ss

**OTHER SYMBOLS**

**DST**  
 DST Int  
 DST alt

Printed by GEOstrip VC Striplog version 4.0.7.0 (www.grsi.ca)



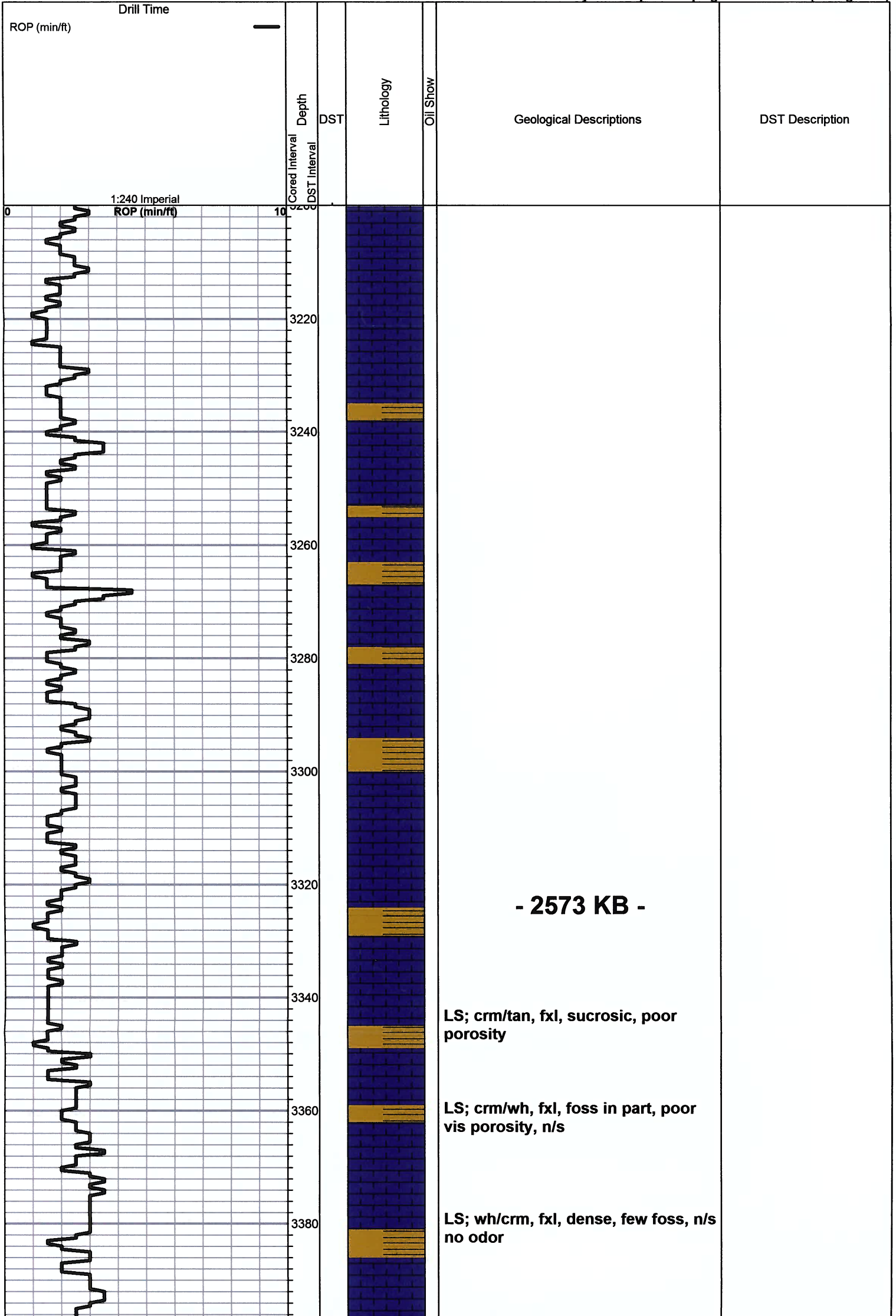
**ROCK TYPES**

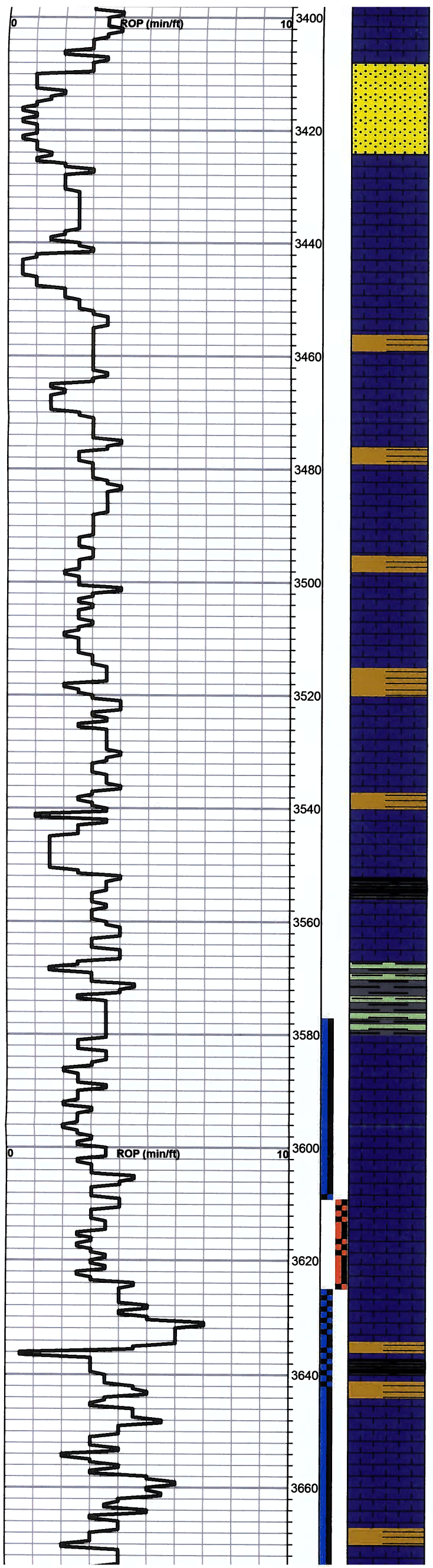


**OTHER SYMBOLS**



Printed by GEOstrip VC Striplog version 4.0.7.0 (www.grsi.ca)





Sand; wh, fine graind, sub rounded, poor vis porosity,

Sh. brn/red

LS; crm, fxl, denses, foss, poor porosity

LS; wh/gry, fxl, foss, cherty in part

LS; wh/crm, fxl, poor vis porosity  
Tr. suc dol

LS: wh,gry, fxl, chlky, scatt porosity, ft blk stn, n/s

Tr. turq sh

Tr. bk carb sh

LS: crm, fxl, foss, scatt porosity n/s

LS: crm, fxl, chlky, poor porosity, ft blk stn, n/s

**Heebner 3552.0 (-979.0) 0.0**

black car sh

Sh. gry/green soft

**Toronto 3581.0 (-1008.0) 0.0**

LS: crm, fxl, scatt porosity, ft blk

**Lansing 3590.0 (-1017.0) 0.0**  
LS: crm, fxl, ft blk stn, sfo when broken, no odor

LS: crm, fxl, good blk stn, sfo w/broken, ft odor w/broken

Poor Sample Quality

LS: crm, fxl, poor porosity, few samples with ft blk stn

LS; crm, gry, fxl, poor porosity n/s

Abundant Red/Gry sh

LS: crm, fxl, ft blk stn, sfo when broken, scatt vis porosity, no odor

LS; crm, fxl, dense, ft blk stn n/s

Poor Sample Quality

**DST #1 3577-3608  
30-45-45-60**

Blow: weak surface built to 2 in  
2nd Opening: weak surface built to 1 in

Recovery:  
5' OCM (35%O, 65% M)  
126' OCM (10%O, 90% M)

Pressures:  
ISIP: 1019 psi  
FSIP: 991 psi  
IFP: 50-60 psi  
FFP: 63-73 psi  
HSH: 1755-1727 psi

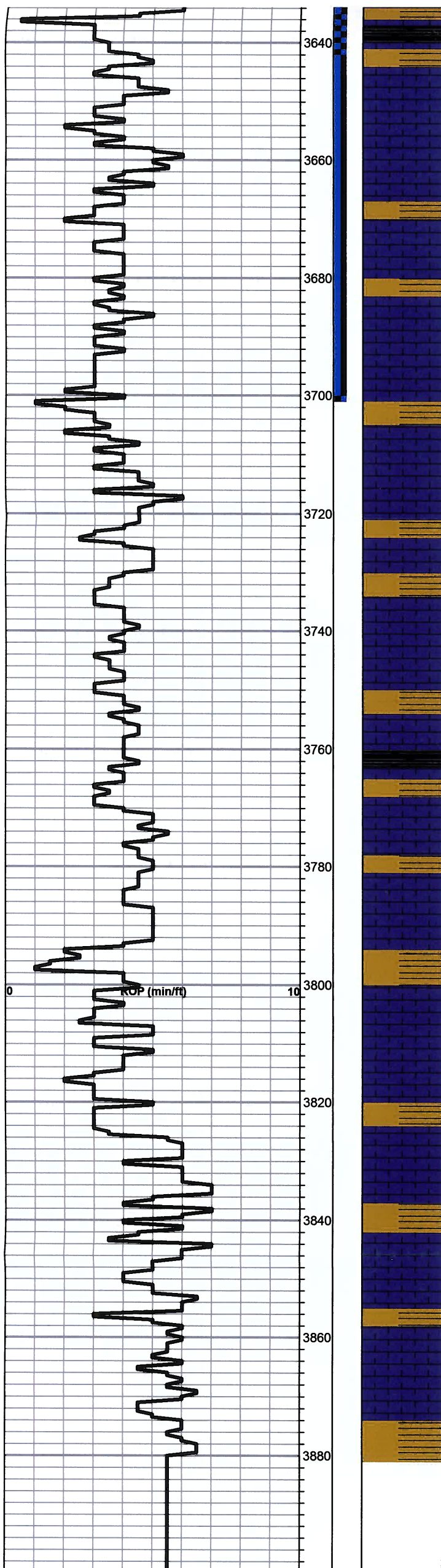
**DST #2 3608-3626  
30-30-30-45**

Blow: surface blow 1/4 in  
2nd Opening: weak surface died in 5 min

Recovery:  
10' Mud

Pressures:  
ISIP: 21 psi  
FSIP: 21 psi  
IFP: 17-18 psi  
FFP: 17-18 psi  
HSH: 1759-1721 psi





LS; crm, fxl, tan, poor porosity, no odor

**Abundant Red/Gry sh**

LS: crm, fxl, ft blk stn, sfo when broken, scatt vis porosity, no odor

LS; crm, fxl, dense, ft blk stn n/s

Poor Sample Quality

Poor Sample Quality

LS: crm, fxl, dense, poor porosity, n/s, no odor

LS; tan, gry, fxl, chlky, poor porosity, n/s

LS: crm, fxl, cherty, poor porosity, n/s

LS: crm, fxl, foss in part, poor porosity/dense

LS: crm, fxl, few ool samples, chlky n/s no odor

**Stark 3748.0 (-1175.0) 0.0**

LS: crm/tan, fxl, dense, poor vis porosity

Tr. suc dol

LS: crm, tan, foss, cherty, poor vis porosity

LS; wh, gry, poor porosity, chlky

**BKC 3793.0 (-1220.0) 0.0**

LS; wh/crm, fxl poor vis porosity

AA

LS: crm, fxl, cherty, dense poor vis porosity

AA

LS; crm, fxl, dense, poor porosity

Tr. dol

**RTD 3880.0 (-1337.0) 0.0**

surface died in 5 min

Recovery:  
10' Mud

Pressures:  
ISIP: 21 psi  
FSIP: 21 psi  
IFP: 17-18 psi  
FFP: 17-18 psi  
HSH: 1759-1721 psi

**DST #3 3626-3700**  
**30-45-45-60**

Blow: fair BOB 10 mins  
2nd Opening: fair BOB 8 mins

Recovery:  
382' OSWM (40%W, 60%M w/ oil spots)  
382' OSMW (70%W, 30%M w/oil spots)

Pressures:  
ISIP: 1257 psi  
FSIP: 1227 psi  
IFP: 45-188 psi  
FFP: 202-372 psi  
HSH: 1769-1746 psi