



DRILL STEM TEST REPORT

Prepared For: **American Warrior Inc.**

PO Box 399
Garden City, KS 67646

ATTN: Jim Musgrove

Grubb D #1-5

5-16s-10w Ellsworth,KS

Start Date: 2014.01.26 @ 11:10:05

End Date: 2014.01.26 @ 18:28:25

Job Ticket #: 56047 DST #: 1

Trilobite Testing, Inc

PO Box 362 Hays, KS 67601

ph: 785-625-4778 fax: 785-625-5620

Printed: 2014.01.28 @ 09:20:11



**TRILOBITE
TESTING, INC**

DRILL STEM TEST REPORT

American Warrior Inc.
PO Box 399
Garden City, KS 67646
ATTN: Jim Musgrove

5-16s-10w Ellsworth, KS

Grubb D #1-5

Job Ticket: 56047

DST#: 1

Test Start: 2014.01.26 @ 11:10:05

GENERAL INFORMATION:

Formation: **Arbuckle**

Deviated: No Whipstock: ft (KB)

Time Tool Opened: 13:16:55

Time Test Ended: 18:28:25

Test Type: Conventional Bottom Hole (Initial)

Tester: Tate Lang

Unit No: 49

Interval: 3225.00 ft (KB) To 3280.00 ft (KB) (TVD)

Reference Elevations: 1793.00 ft (KB)

Total Depth: 3280.00 ft (KB) (TVD)

1785.00 ft (CF)

Hole Diameter: 7.88 inches Hole Condition: Good

KB to GR/CF: 8.00 ft

Serial #: 8898 Outside

Press@RunDepth: 1058.65 psig @ 3243.00 ft (KB)

Capacity: 8000.00 psig

Start Date: 2014.01.26

End Date: 2014.01.26

Last Calib.: 2014.01.26

Start Time: 11:10:06

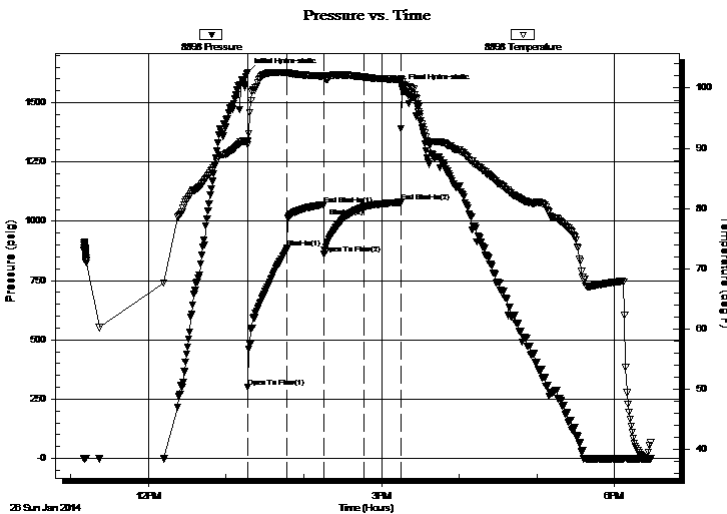
End Time: 18:28:25

Time On Btm: 2014.01.26 @ 13:16:45

Time Off Btm: 2014.01.26 @ 15:15:45

TEST COMMENT: B.O.B. In 1 min
Dead no blow back
B.O.B. In 1 min
Dead no blow back

PRESSURE SUMMARY



Time (Min.)	Pressure (psig)	Temp (deg F)	Annotation
0	1627.88	91.19	Initial Hydro-static
1	300.25	90.64	Open To Flow (1)
31	885.68	102.51	Shut-In(1)
59	1070.26	101.98	End Shut-In(1)
59	862.36	101.86	Open To Flow (2)
90	1058.65	101.84	Shut-In(2)
119	1080.27	101.42	End Shut-In(2)
119	1560.61	101.38	Final Hydro-static

Recovery

Length (ft)	Description	Volume (bbl)
1090.00	25%O 50%W 25%M	15.29
960.00	10%O 70%W 20%M	13.47
360.00	95%W 5%M	5.05

Gas Rates

	Choke (inches)	Pressure (psig)	Gas Rate (Mcf/d)



**TRILOBITE
TESTING, INC**

DRILL STEM TEST REPORT

TOOL DIAGRAM

American Warrior Inc.

5-16s-10w Ellsworth,KS

PO Box 399
Garden City, KS 67646

Grubb D #1-5

Job Ticket: 56047

DST#: 1

ATTN: Jim Musgrove

Test Start: 2014.01.26 @ 11:10:05

Tool Information

Drill Pipe:	Length: 3223.00 ft	Diameter: 3.80 inches	Volume: 45.21 bbl	Tool Weight:	2000.00 lb
Heavy Wt. Pipe:	Length: 0.00 ft	Diameter: 0.00 inches	Volume: 0.00 bbl	Weight set on Packer:	25000.00 lb
Drill Collar:	Length: 0.00 ft	Diameter: 2.25 inches	Volume: 0.00 bbl	Weight to Pull Loose:	40000.00 lb
			<u>Total Volume: 45.21 bbl</u>	Tool Chased	0.00 ft
Drill Pipe Above KB:	18.00 ft			String Weight: Initial	26000.00 lb
Depth to Top Packer:	3225.00 ft			Final	34000.00 lb
Depth to Bottom Packer:	ft				
Interval between Packers:	55.00 ft				
Tool Length:	75.00 ft				
Number of Packers:	2	Diameter: 6.75 inches			

Tool Comments:

Tool Description

Tool Description	Length (ft)	Serial No.	Position	Depth (ft)	Accum. Lengths
Shut In Tool	5.00			3210.00	
Hydraulic tool	5.00			3215.00	
Packer	5.00			3220.00	20.00 Bottom Of Top Packer
Packer	5.00			3225.00	
Stubb	1.00			3226.00	
Perforations	17.00			3243.00	
Recorder	0.00	8897	Inside	3243.00	
Recorder	0.00	8898	Outside	3243.00	
Change Over Sub	1.00			3244.00	
Drill Pipe	32.00			3276.00	
Change Over Sub	1.00			3277.00	
Bullnose	3.00			3280.00	55.00 Bottom Packers & Anchor

Total Tool Length: 75.00



**TRILOBITE
TESTING, INC**

DRILL STEM TEST REPORT

FLUID SUMMARY

American Warrior Inc.

5-16s-10w Ellsworth,KS

PO Box 399
Garden City, KS 67646

Grubb D #1-5

Job Ticket: 56047

DST#: 1

ATTN: Jim Musgrove

Test Start: 2014.01.26 @ 11:10:05

Mud and Cushion Information

Mud Type: Gel Chem

Cushion Type:

Oil API:

deg API

Mud Weight: 9.00 lb/gal

Cushion Length: ft

Water Salinity: 48000 ppm

Viscosity: 61.00 sec/qt

Cushion Volume: bbl

Water Loss: 7.19 in³

Gas Cushion Type:

Resistivity: ohm.m

Gas Cushion Pressure: psig

Salinity: 3800.00 ppm

Filter Cake: 1.00 inches

Recovery Information

Recovery Table

Length ft	Description	Volume bbl
1090.00	25%O 50%W 25%M	15.290
960.00	10%O 70%W 20%M	13.466
360.00	95%W 5%M	5.050

Total Length: 2410.00 ft Total Volume: 33.806 bbl

Num Fluid Samples: 0

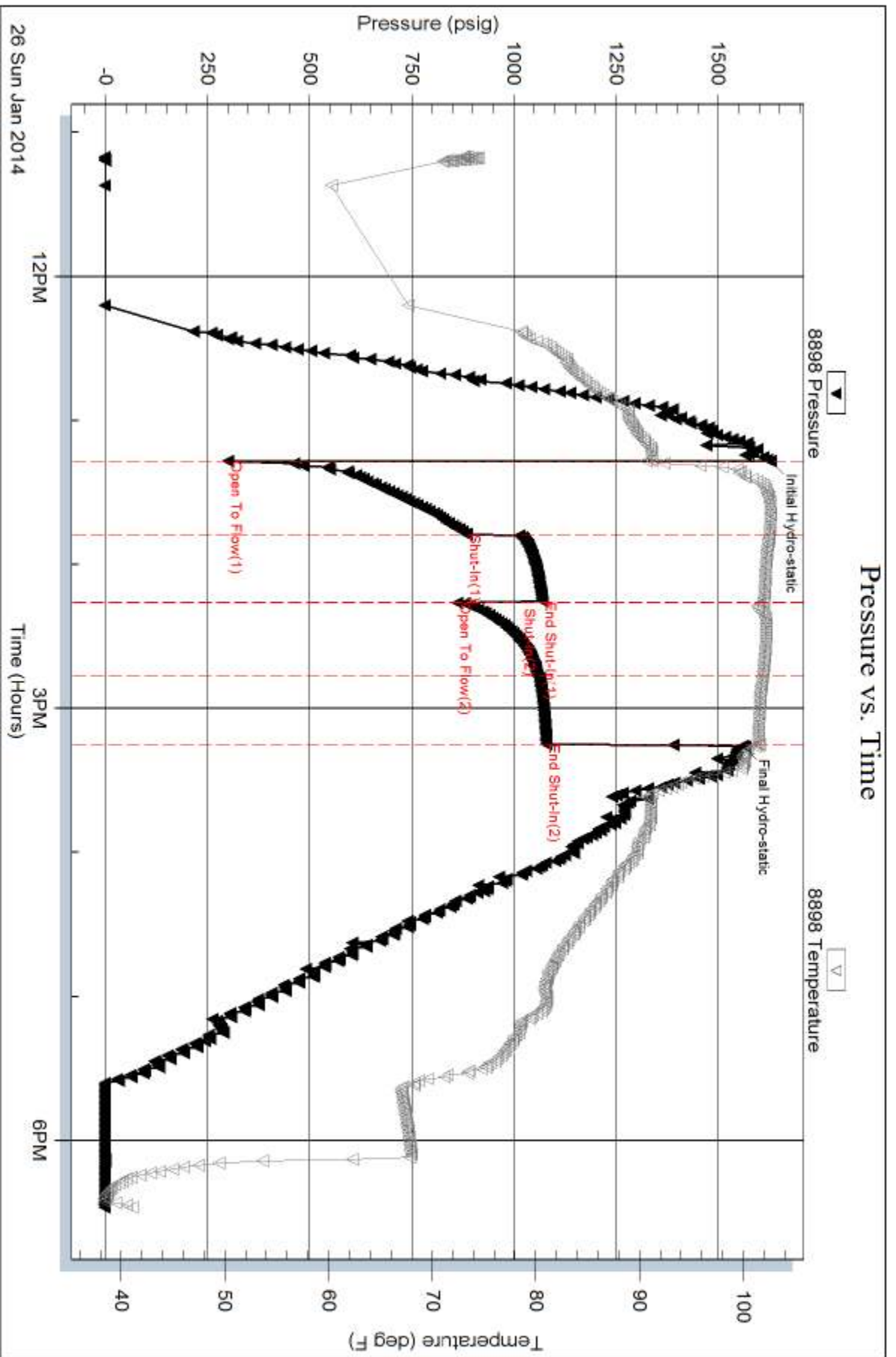
Num Gas Bombs: 0

Serial #:

Laboratory Name:

Laboratory Location:

Recovery Comments:



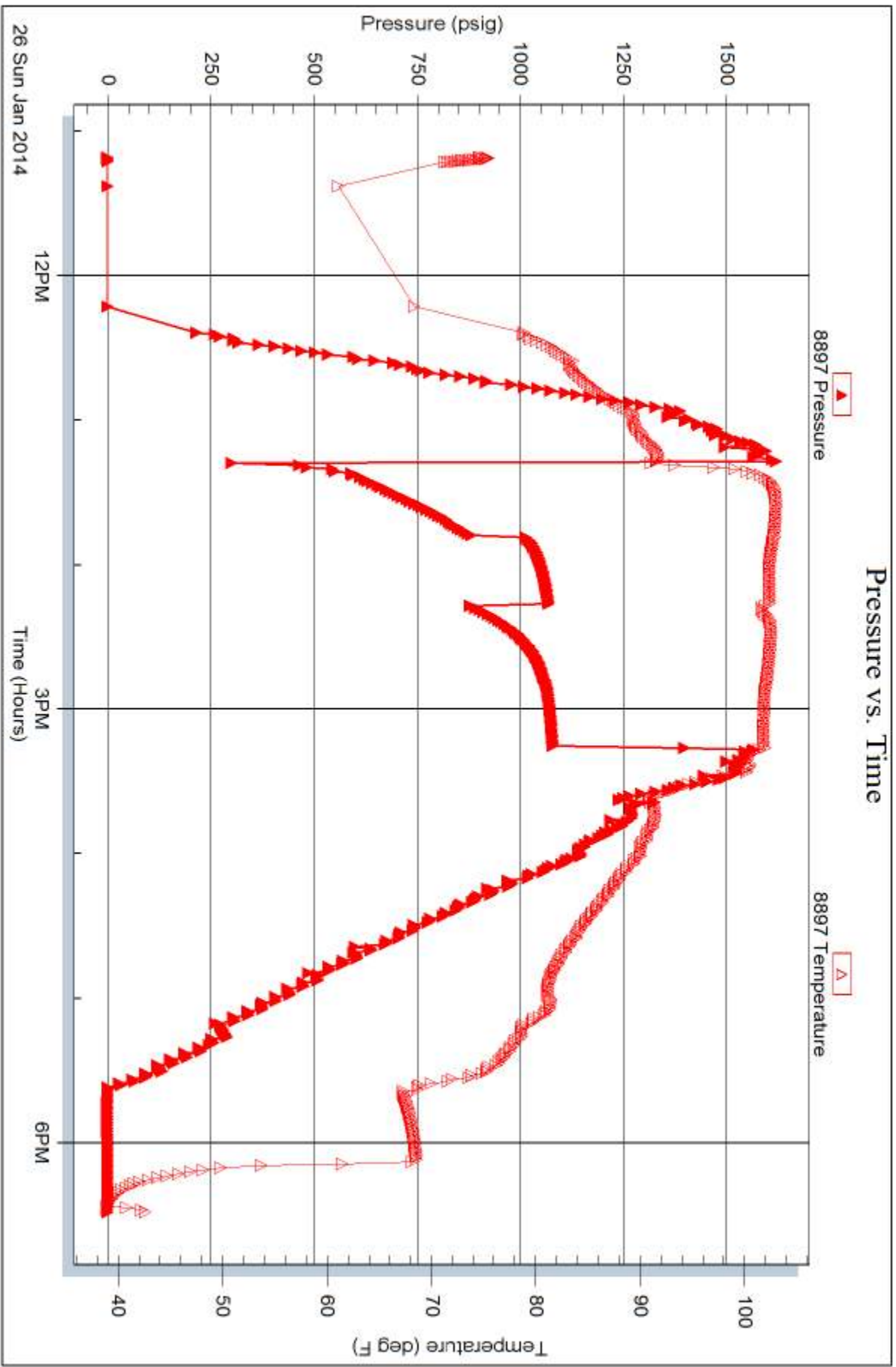
Serial #: 8897

Inside

American Warrior Inc.

Grubb D#1-5

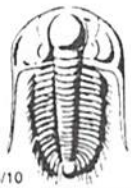
DST Test Number: 1



Trilobite Testing, Inc

Ref. No: 56047

Printed: 2014.01.28 @ 09:20:13



TRILOBITE TESTING INC.

1515 Commerce Parkway • Hays, Kansas 67601

Test Ticket

NO. 56047

Well Name & No. Grubb D # 1-5 Test No. 1 Date 1-26-13
 Company American Warrior Inc Elevation 1793 KB 1785 GL
 Address 3118 Cummings Rd PO Box 399 Garden City, KS 67646
 Co. Rep / Geo. Sim Musgrove Rig Dylite #8
 Location: Sec. 5 Twp. 16S Rge. 10W Co. Ellsworth State KS

Interval Tested 3225 3280 Zone Tested Arbuckle
 Anchor Length 55 Drill Pipe Run 3223 Mud Wt. 9.0
 Top Packer Depth 3221 Drill Collars Run 0 Vis 61
 Bottom Packer Depth 3225 Wt. Pipe Run 0 WL 7.2
 Total Depth 3280 Chlorides 3800 ppm System LCM 0 #

Blow Description B.O.B. IN 1 min
Dead No blow back
B.O.B. FN 1 min
Dead No blow back

Rec	Feet of	%gas	%oil	%water	%mud
<u>1090</u>	<u>OCMW</u>	<u>25</u>	<u>50</u>	<u>25</u>	<u>0</u>
<u>960</u>	<u>OCMW</u>	<u>10</u>	<u>70</u>	<u>20</u>	<u>0</u>
<u>360</u>	<u>MCW</u>	<u>95</u>	<u>5</u>	<u>0</u>	<u>0</u>
Rec	Feet of	%gas	%oil	%water	%mud
Rec	Feet of	%gas	%oil	%water	%mud

Rec Total 2410 BHT 101 Gravity _____ API RW 223 @ 48 °F Chlorides 4800 ppm
 Test 1150
 Jars _____
 Safety Joint _____
 Circ Sub _____
 Hourly Standby _____
 Mileage 115 RT
 Sampler _____
 Straddle _____
 Shale Packer _____
 Extra Packer _____
 Extra Recorder _____
 Day Standby _____
 Accessibility _____
 Sub Total 1328.25

(A) Initial Hydrostatic 1628 T-On Location 09:30
 (B) First Initial Flow 300 T-Started 11:10
 (C) First Final Flow 886 T-Open 13:16
 (D) Initial Shut-In 1070 T-Pulled 15:16
 (E) Second Initial Flow 862 T-Out 18:29
 (F) Second Final Flow 1059 Comments Load after test
 (G) Final Shut-In 1680
 (H) Final Hydrostatic 1562

Initial Open 30
 Initial Shut-In 30
 Final Flow 30
 Final Shut-In 30
 Approved By _____ Our Representative [Signature]

Trilobite Testing Inc. shall not be liable for damaged of any kind of the property or personnel of the one for whom a test is made, or for any loss suffered or sustained, directly or indirectly, through the use of its equipment, or its statements or opinion concerning the results of any test, tools lost or damaged in the hole shall be paid for at cost by the party for whom the test is made.