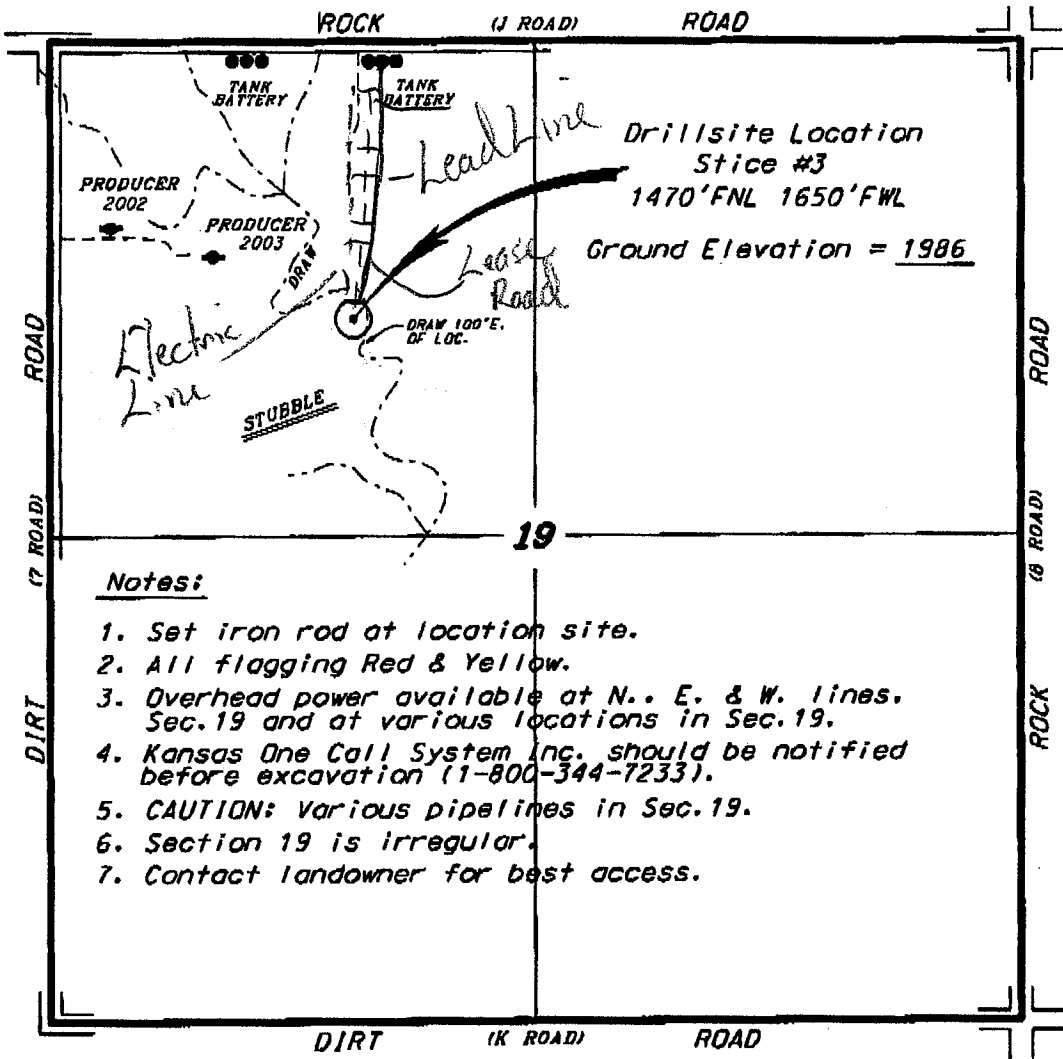
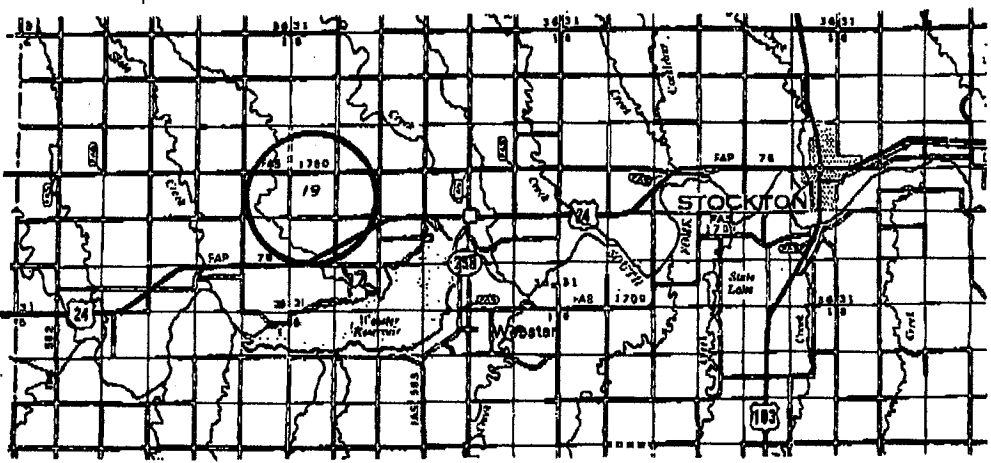


BACH OIL PRODUCTION, INC.  
STICE LEASE  
NW. 1/4, SECTION 19, T7S, R19W  
ROOKS COUNTY, KANSAS



Notes:

1. Set iron rod at location site.
2. All flagging Red & Yellow.
3. Overhead power available at N., E. & W. lines. Sec. 19 and at various locations in Sec. 19.
4. Kansas One Call System Inc. should be notified before excavation (1-800-344-7233).
5. CAUTION: Various pipelines in Sec. 19.
6. Section 19 is irregular.
7. Contact landowner for best access.



• Controlling data is based upon the best maps and photographs available to us and upon a regular section of land containing 640 acres.

• Approximate section lines were determined using the normal standards of care of oilfield surveyors practicing in the state of Kansas. The exact location of the drillsite location in the section is not guaranteed, therefore, the operator securing this service and accepting this stip and all other parties relying thereon agree to hold Central Kansas Oilfield Services, Inc., its officers and employees harmless from all losses, costs and expenses and said entities released from any liability from incidental or consequential damages.

• Elevations derived from National Geodetic Vertical Datum.

Date December 14, 2009