



GEOLOGIST'S REPORT  
DRILL TIME &  
SAMPLE LOG

COMPANY **COBALT ENERGY, LLC**  
LEASE **Gillespie Trust 'A' #1-27X**  
FIELD **Wildcat**

LOCATION **2248' FSL & 1834' FEL**  
SEC. **27** TWP. **11S** RGE. **29W**  
COUNTY **Gove** STATE **KS**  
CONTRACTOR **Pickrel Drilling Co., Rig #10**  
SPUD **02/21/14** COMP **02/21/14**  
RTD **4800'** LTD **4602'**  
MUD UP **3500'** TYPE MUD **Chemical**

SAMPLES SAVED FROM **3700'** TO **RTD**  
DRILLING TIME KEPT FROM **3700'** TO **RTD**  
SAMPLES EXAMINED FROM **3700'** TO **RTD**

GEOLOGICAL SUPERVISION FROM **3580'** TO **RTD**  
GEOLOGIST ON WELL **Corey N. Baker**  
Microlog & Sonic  
Pneum Energy Services

FORMATION TOPS  
Anhydrite **2345 (+478)**  
Base of Anhydrite **2376 (+447)**  
Heebner **3899 (-1076)**  
Lansing **3934 (-1111)**  
Stark **4161 (-1339)**  
BKC **4216 (-1393)**  
Marmaton **4262 (-1439)**  
Fort Scott **4419 (-1596)**  
Cherokee Shale **4445 (-1622)**  
Mississippian **4502 (-1679)**  
RTD **4600 (-1777)**  
LTD **4602 (-1779)**

ELEVATIONS  
KB **2823'**  
DF \_\_\_\_\_  
GL **2816'**  
Measurements Are All From **KB**

CASING  
Conductor **NA**  
Surface **8 5/8" @ 222'**  
Production **None**  
Electrical Surveys  
Dual Induction, Neutron-Density

REMARKS  
The Gillespie Trust 'A' #1-27X ran positive structurally to the dry hole roughly 3/4 mile to the north through the Lansing/Kansas City then began to thicken. All shows were tested with negative results. Logs were run and the decision was made to plug & abandon this test as a dry hole.

\*(Note) The Gillespie Trust 'A' #1-27 was P&A'd at 964' after a split was discovered in the surface casing. The rig was skid 16' north to the new 'X' location.

Respectfully Submitted,  
**Corey Baker**  
Vice President - Exploration  
Cobalt Energy, LLC

API #15-063-22180-00-00

LEGEND

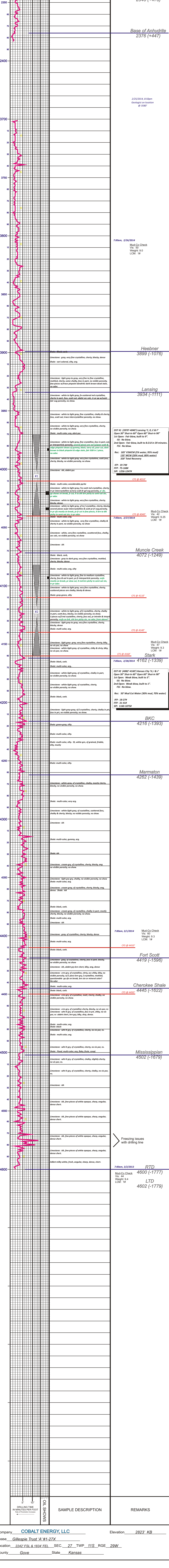
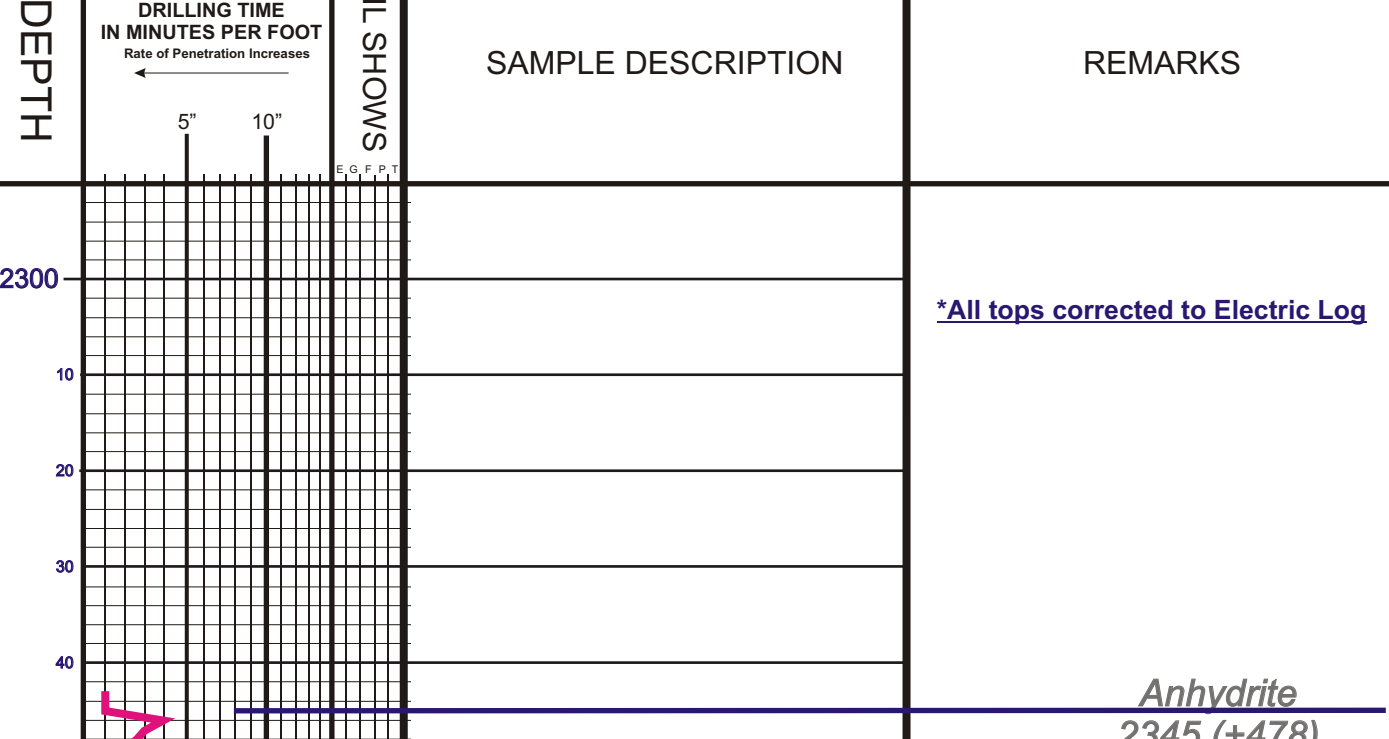


Table with columns: DEPTH, LITHOLOGY, OIL SHOWS, SAMPLE DESCRIPTION, REMARKS. Contains detailed log data from 2300 to 4600 feet depth.

Company **COBALT ENERGY, LLC** Elevation **2823' KB**  
Lease **Gillespie Trust 'A' #1-27X**  
Location **2242' FSL & 1834' FEL** SEC. **27** TWP. **11S** RGE. **29W**  
County **Gove** State **Kansas**