



## DRILL STEM TEST REPORT

Prepared For: **RJM Company**

Po Box 256 Claflin KS 67525+0256

ATTN: Clint

### **Gibber #1**

### **16-17s-11w Barton**

Start Date: 2014.02.27 @ 07:30:00

End Date: 2014.02.27 @ 15:01:00

Job Ticket #: 19141                      DST #: 4

Superior Testers Enterprises LLC  
PO Box 138 Great Bend KS 67530  
1-800-792-6902

Printed: 2014.02.27 @ 15:23:26



# DRILL STEM TEST REPORT

RJM Company  
 Po Box 256 Claflin KS 67525+0256  
 ATTN: Clint

**16-17s-11w Barton**  
**Gibber #1**  
 Job Ticket: 19141 **DST#: 4**  
 Test Start: 2014.02.27 @ 07:30:00

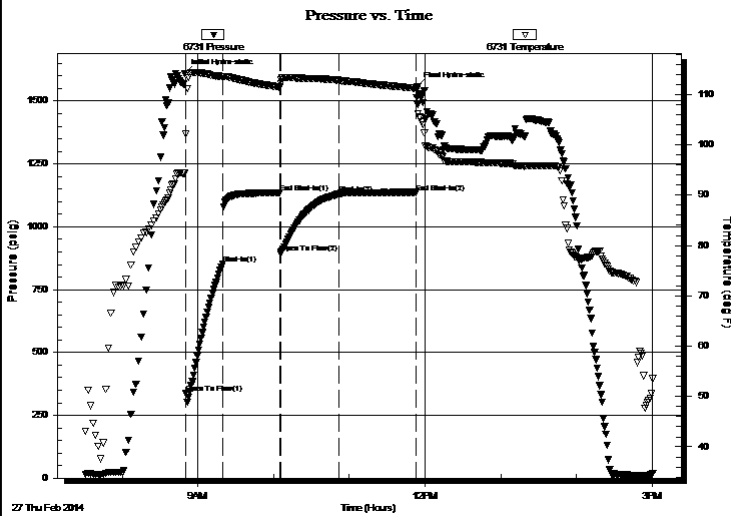
## GENERAL INFORMATION:

Formation: **Arbuckle**  
 Deviated: No Whipstock: ft (KB)  
 Time Tool Opened: 08:50:30  
 Time Test Ended: 15:01:00  
 Interval: **3240.00 ft (KB) To 3270.00 ft (KB) (TVD)**  
 Total Depth: 3270.00 ft (KB) (TVD)  
 Hole Diameter: 7.88 inches Hole Condition: Fair  
 Test Type: Conventional Bottom Hole (Initial)  
 Tester: Jared Scheck  
 Unit No: 3320-Great Bend -70  
 Reference Elevations: 1827.00 ft (KB)  
 1820.00 ft (CF)  
 KB to GR/CF: 7.00 ft

## Serial #: 6731

Press@RunDepth: 1130.31 psig @ ft (KB) Capacity: 5000.00 psig  
 Start Date: 2014.02.27 End Date: 2014.02.27 Last Calib.: 2014.02.27  
 Start Time: 07:30:00 End Time: 15:01:00 Time On Btm: 2014.02.27 @ 08:49:30  
 Time Off Btm: 2014.02.27 @ 11:54:00

**TEST COMMENT:** 1st Opening 30 Minutes-Strong blow built bottom of bucket in less then 1 minute  
 1st Shut-in 45 Minutes-Very weak surface blow  
 2nd Opening 45 Minutes-Strong blow built bottom of bucket in less then 1 minute  
 2nd Shut-in 60 Minutes-1 1/2 inch blow



## PRESSURE SUMMARY

Time (Min.)	Pressure (psig)	Temp (deg F)	Annotation
0	1608.07	94.31	Initial Hydro-static
1	338.19	102.09	Open To Flow (1)
30	852.85	113.54	Shut-In(1)
76	1135.32	111.47	End Shut-In(1)
77	897.49	113.00	Open To Flow (2)
122	1130.31	112.78	Shut-In(2)
184	1136.65	111.26	End Shut-In(2)
185	1556.67	108.23	Final Hydro-static

## Recovery

Length (ft)	Description	Volume (bbl)
3070.00	Clean Oil	43.06
0.00	Gravity 47	0.00

## Gas Rates

	Choke (inches)	Pressure (psig)	Gas Rate (Mcf/d)



# DRILL STEM TEST REPORT

RJM Company  
 Po Box 256 Claflin KS 67525+0256  
 ATTN: Clint

**16-17s-11w Barton**  
**Gibber #1**  
 Job Ticket: 19141 **DST#: 4**  
 Test Start: 2014.02.27 @ 07:30:00

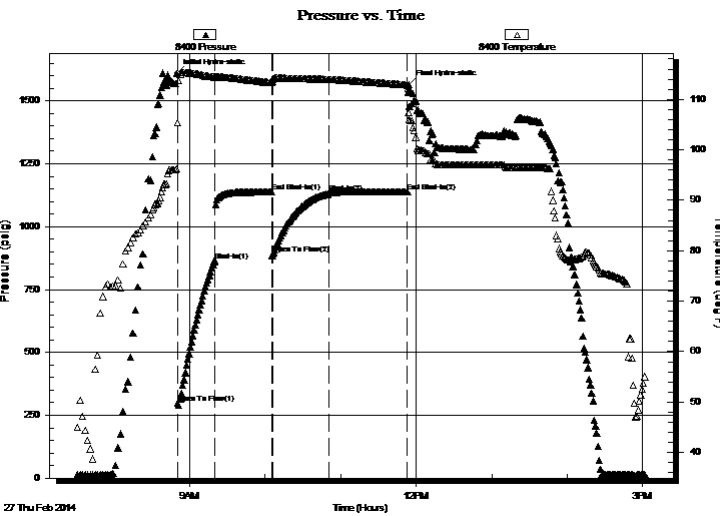
## GENERAL INFORMATION:

Formation: **Arbuckle**  
 Deviated: No Whipstock: ft (KB)  
 Time Tool Opened: 08:50:30  
 Time Test Ended: 15:01:00  
 Interval: **3240.00 ft (KB) To 3270.00 ft (KB) (TVD)**  
 Total Depth: 3270.00 ft (KB) (TVD)  
 Hole Diameter: 7.88 inches Hole Condition: Fair  
 Test Type: Conventional Bottom Hole (Initial)  
 Tester: Jared Scheck  
 Unit No: 3320-Great Bend -70  
 Reference Elevations: 1827.00 ft (KB)  
 1820.00 ft (CF)  
 KB to GR/CF: 7.00 ft

## Serial #: 8400

Press@RunDepth: 1138.30 psig @ ft (KB) Capacity: 5000.00 psig  
 Start Date: 2014.02.27 End Date: 2014.02.27 Last Calib.: 2014.02.27  
 Start Time: 07:30:00 End Time: 15:01:30 Time On Btm: 2014.02.27 @ 08:49:30  
 Time Off Btm: 2014.02.27 @ 11:54:00

**TEST COMMENT:** 1st Opening 30 Minutes-Strong blow built bottom of bucket in less then 1 minute  
 1st Shut-in 45 Minutes-Very weak surface blow  
 2nd Opening 45 Minutes-Strong blow built bottom of bucket in less then 1 minute  
 2nd Shut-in 60 Minutes-1 1/2 inch blow



## PRESSURE SUMMARY

Time (Min.)	Pressure (psig)	Temp (deg F)	Annotation
0	1608.36	96.22	Initial Hydro-static
1	298.17	105.39	Open To Flow (1)
31	865.64	114.40	Shut-In(1)
76	1137.67	113.33	End Shut-In(1)
77	890.63	114.03	Open To Flow (2)
121	1134.46	113.95	Shut-In(2)
184	1138.30	112.85	End Shut-In(2)
185	1565.35	107.33	Final Hydro-static

## Recovery

Length (ft)	Description	Volume (bbl)
3070.00	Clean Oil	43.06
0.00	Gravity 47	0.00

## Gas Rates

Choke (inches)	Pressure (psig)	Gas Rate (Mcf/d)



# DRILL STEM TEST REPORT

TOOL DIAGRAM

RJM Company  
 Po Box 256 Claflin KS 67525+0256  
 ATTN: Clint

**16-17s-11w Barton**  
**Gibber #1**  
 Job Ticket: 19141      **DST#: 4**  
 Test Start: 2014.02.27 @ 07:30:00

### Tool Information

Drill Pipe:	Length: 3250.00 ft	Diameter: 3.80 inches	Volume: 45.59 bbl	Tool Weight:	1000.00 lb
Heavy Wt. Pipe:	Length: 0.00 ft	Diameter: 0.00 inches	Volume: 0.00 bbl	Weight set on Packer:	20000.00 lb
Drill Collar:	Length: 0.00 ft	Diameter: 0.00 inches	Volume: 0.00 bbl	Weight to Pull Loose:	70000.00 lb
			<u>Total Volume: 45.59 bbl</u>	Tool Chased	0.00 ft
Drill Pipe Above KB:	30.00 ft			String Weight: Initial	47000.00 lb
Depth to Top Packer:	3240.00 ft			Final	59000.00 lb
Depth to Bottom Packer:	ft				
Interval between Packers:	30.00 ft				
Tool Length:	50.00 ft				
Number of Packers:	2	Diameter: 6.75 inches			

Tool Comments:

Tool Description	Length (ft)	Serial No.	Position	Depth (ft)	Accum. Lengths
------------------	-------------	------------	----------	------------	----------------

Shut In Tool	5.00			3225.00	
Hydraulic tool	5.00			3230.00	
Packer	5.00			3235.00	20.00      Bottom Of Top Packer
Packer	5.00			3240.00	
Recorder	0.00			3240.00	
Recorder	0.00			3240.00	
Anchor	27.00			3267.00	
Bullnose	3.00			3270.00	30.00      Bottom Packers & Anchor

**Total Tool Length: 50.00**



# DRILL STEM TEST REPORT

## FLUID SUMMARY

RJM Company  
 Po Box 256 Claflin KS 67525+0256  
 ATTN: Clint

**16-17s-11w Barton**  
**Gibber #1**  
 Job Ticket: 19141      **DST#: 4**  
 Test Start: 2014.02.27 @ 07:30:00

### Mud and Cushion Information

Mud Type: Gel Chem	Cushion Type:	Oil API:	deg API
Mud Weight: 9.00 lb/gal	Cushion Length: ft	Water Salinity:	ppm
Viscosity: 60.00 sec/qt	Cushion Volume: bbl		
Water Loss: 10.80 in <sup>3</sup>	Gas Cushion Type:		
Resistivity: ohm.m	Gas Cushion Pressure: psig		
Salinity: 12000.00 ppm			
Filter Cake: 1.00 inches			

### Recovery Information

Recovery Table

Length ft	Description	Volume bbl
3070.00	Clean Oil	43.064
0.00	Gravity 47	0.000

Total Length: 3070.00 ft      Total Volume: 43.064 bbl  
 Num Fluid Samples: 0      Num Gas Bombs: 0      Serial #:  
 Laboratory Name:      Laboratory Location:  
 Recovery Comments: broke circ sub pin

