

API #15-435-2530

**GEOLOGIST'S REPORT**  
**DRILLING TIME AND SAMPLE LOG**

Geologist on Well: Alex Chapin  
 LEASE: Stanley #3  
 FIELD: Daeshaling  
 LOCATION: 1650 FSL & 1240 F.W.L.  
 SEC: 28 T10SP 18S RGE: 24W  
 COUNTY: Ness STATE: Kansas  
 CONTRACTOR: Duke Drilling Rig #10  
 STU/D: 1/31/14 COMP: 2/12/14

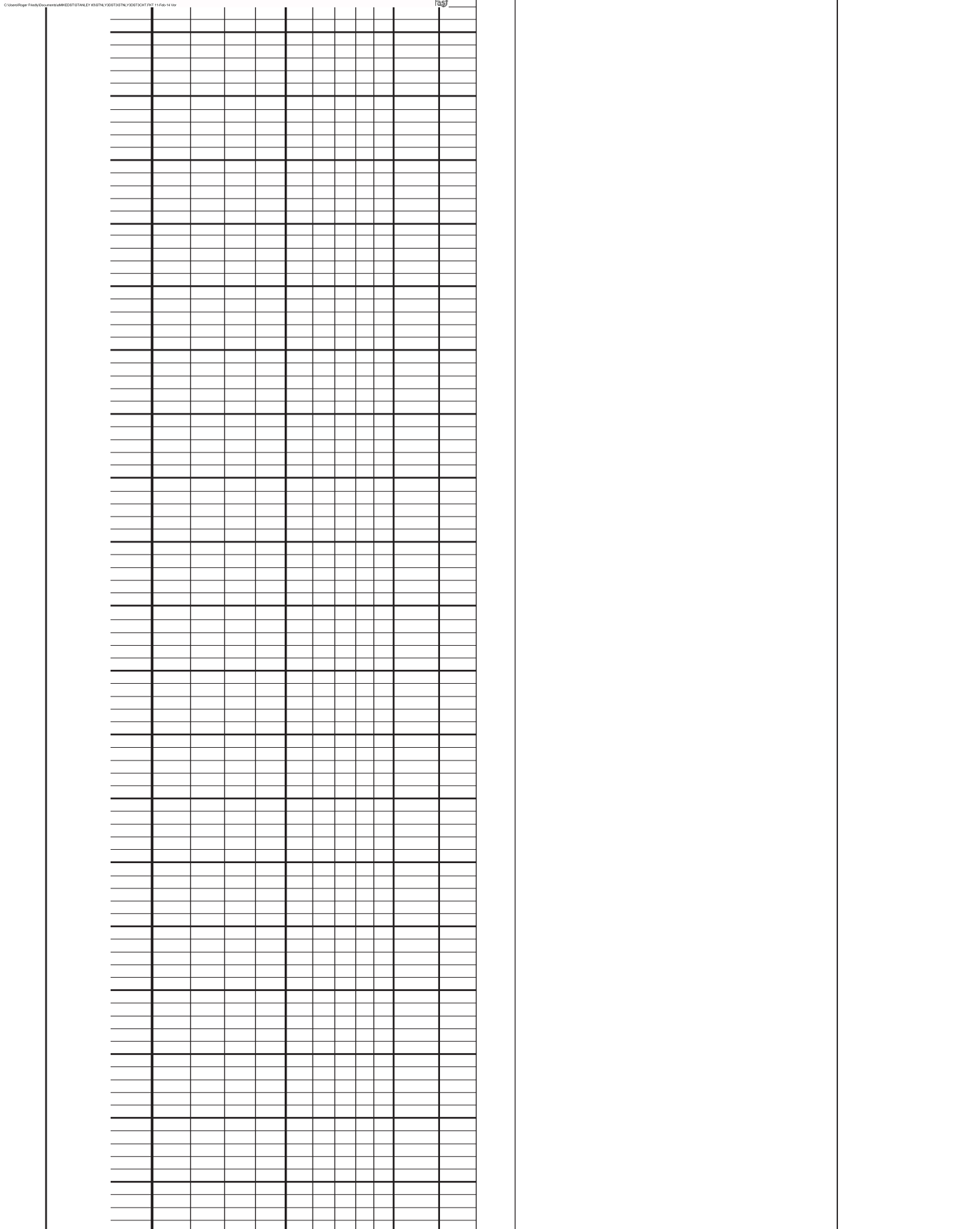
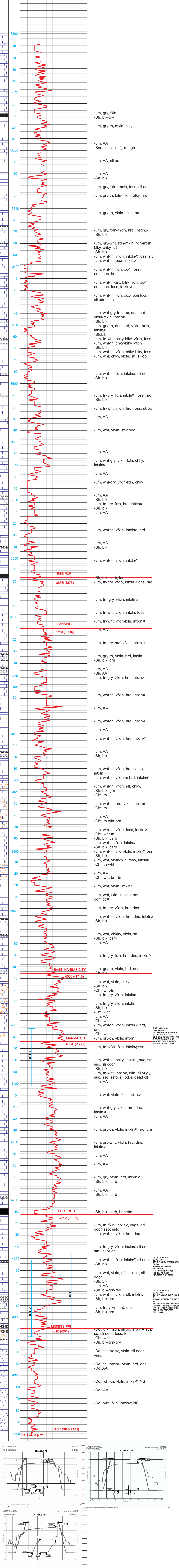
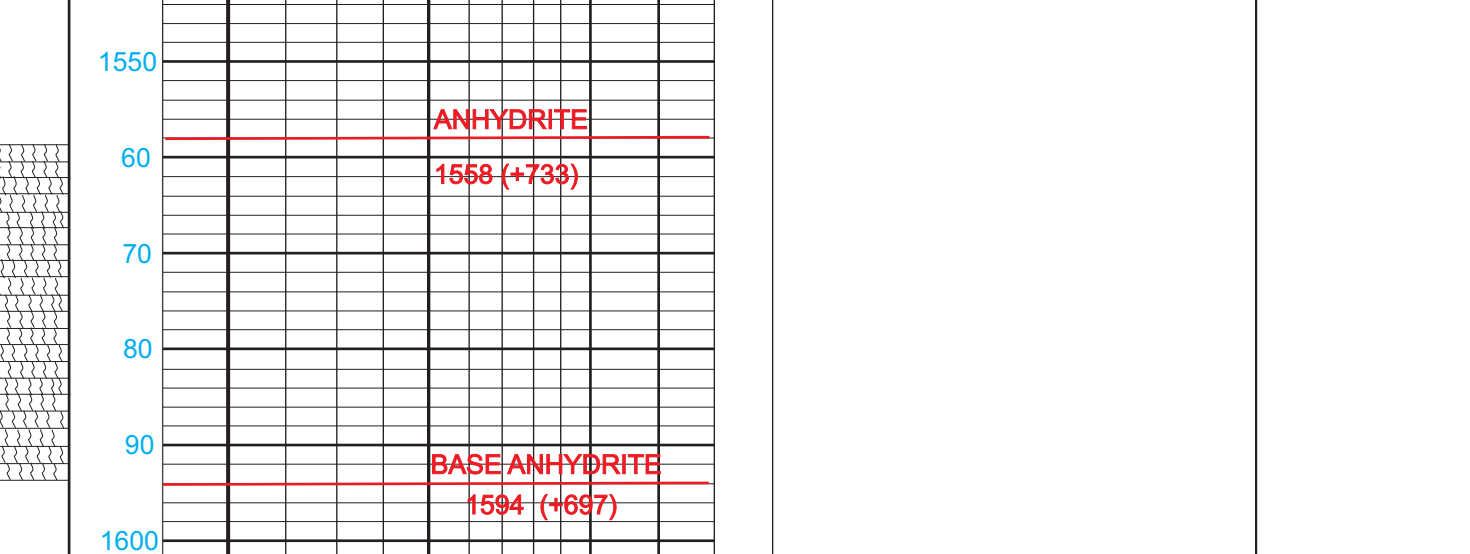
ELEVATIONS  
 KB 2291  
 DF \_\_\_\_\_  
 GL 2280  
 Measurements are All From Kelly Bushing

RTD 4400 LTD 4396  
 MUD UP 3300 TYPE MUD CHEMICAL  
 SURFACE 8 5/8" @ 2.36  
 CONDUCTOR \_\_\_\_\_  
 PRODUCTION NONE  
 ELECTRICAL SURVEYS \_\_\_\_\_  
 DIL. DUCP \_\_\_\_\_

FORMATION  
 Reference Well: Stanley #2, Palomero, NMSW-SW  
 Sample Tops E-log Tops  
 Anhydrite 1558 (+733) 1562 (+729)  
 Base Anhydrite 1594 (+697) 1598 (+693)  
 Heebner 3666 (-1375) 3662 (-1372)  
 Lansing 3710 (-1415) 3704 (-1412)  
 Marmaton 4064 (-1716) 4062 (-1711)  
 Fort Scott 4212 (-1971) 4206 (-1915)  
 Mississippian 4310 (-2019) 4310 (-2019)

REMARKS DUE TO THE LOW STRUCTURAL POSITION OF ALL PRODUCING FORMATIONS, LACK OF RESERVOIR DEVELOPMENT AND NEGATIVE RESULTS OF DRILL STEM TEST, IT WAS RECOMMENDED TO PLUG AND ABANDON THE STANLEY #3.

**LEGEND**



STANLEY #3  
 STANLEY #3  
 STANLEY #3