

APP. # 15-163-24179-0000

GEOLOGICAL REPORT
DRILLING TIME AND SAMPLE LOG

COMPANY Brinker Enterprises, LLC
 LEASE Knipp SW #2
 FIELD Wildcat
 LOCATION 2310' ESK & 620' EWL
 SEC 36 TWP 7S RGE 20W
 COUNTY Boaks STATE Kansas
 CONTRACTOR WWD Drilling Rig #6
 SPUD 3-11-14 COMP 3-17-14
 SAMPLES SAVED FROM 2880' TO R.T.D.

ELEVATION
 KB 1934
 DF 1932
 GL 1929
 Depths Measured From Log KB Drilling KB

CASING
 Surface 13 3/8" @ 50'
 Production None

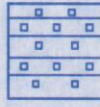
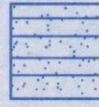


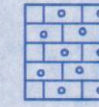

ELECTRIC LOGS
Nabors

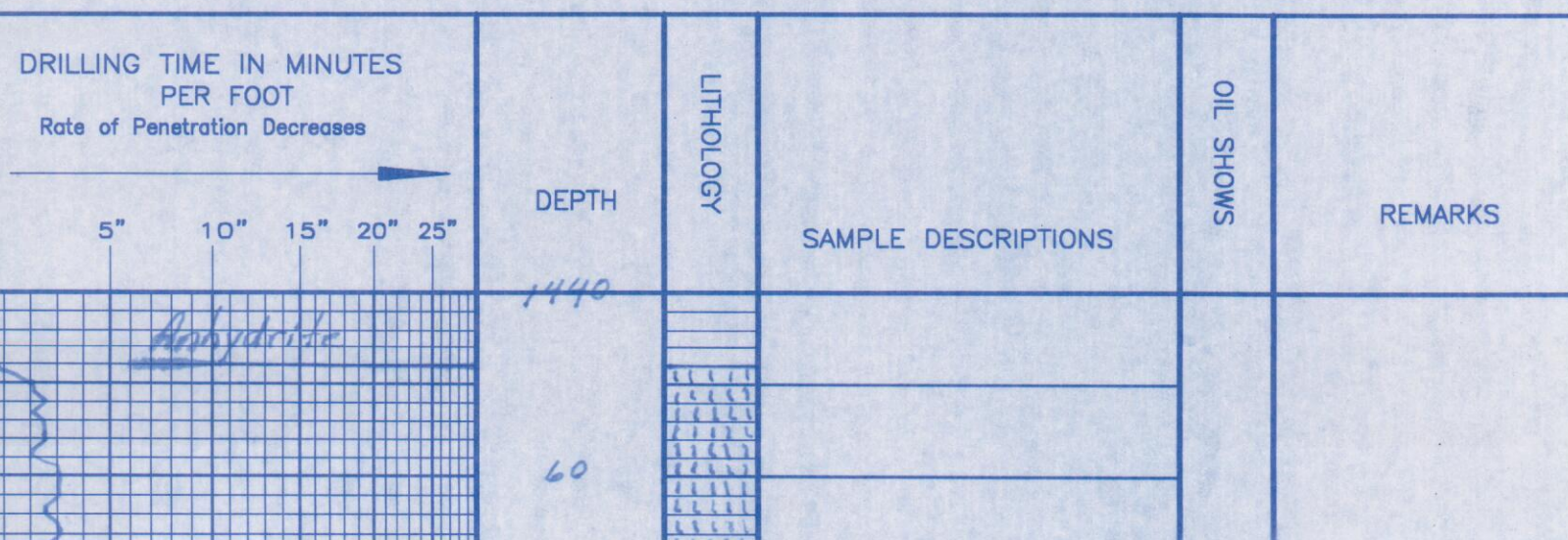
FORMATION	SAMPLE	E. LOG	DATUM	FORMATION TOPS AND STRUCTURAL POSITION			
				A	B	C	D
Anhydrite	1448	1447	+ 487	+ 484			
Base Anhydrite	1485	1483	+ 451	+ 450			
Topoka	2902	2900	- 966	- 972			
Hebner	3107	3105	- 1171	- 1178			
Taronta	3129	3127	- 1193	- 1200			
Lansing	3146	3144	- 1210	- 1217			
Base Kansas City	3355	3353	- 1419	- 1425			
Marmaton	3389	3387	- 1453	- 1460			
Arbuckle		Not Reached		- 1497			
Total Depth	3455	3454	- 1520	- 1620			

REFERENCE WELLS
 A Brinker Enterprises, LLC, Knipp SW #36-1, 1943' ESK & 1628' EWL
 B SEC. 36-75-20W
 C

REMARKS
 This well ran 7 feet higher on the Lansing top than the reference well. After review of all pertinent information it was decided this well should be plugged and abandoned.
 Richard B. Bell
 3-17-14

LEGEND

-  Anhydrite
-  Salt
-  Sandstone
-  Shale
-  Carb sh
-  Limestone
-  Ool. Lime
-  Chert
-  Dolomite



-conn

Base Anhydrite

80

2800

20

-conn

40

sh: gry slty
LS: tn-gry fslf dns

-conn

60

LS: tn-gry fslf dns
sh: gry slty
LS: tn-gry fslf dns

80

sh: gry + yell slty

-conn

2900

LS: tn-gry fslf dns

sh: gry + brn

Topoka

LS: wh-tn-gry sli. cky. fslf
dns N.S.O.

LS: a.a. dns.

-conn

20

LS: wh-tn v. cky. fxl n Tr
PP Φ friable N.S.O.

40

LS: tn-gry fslf dns

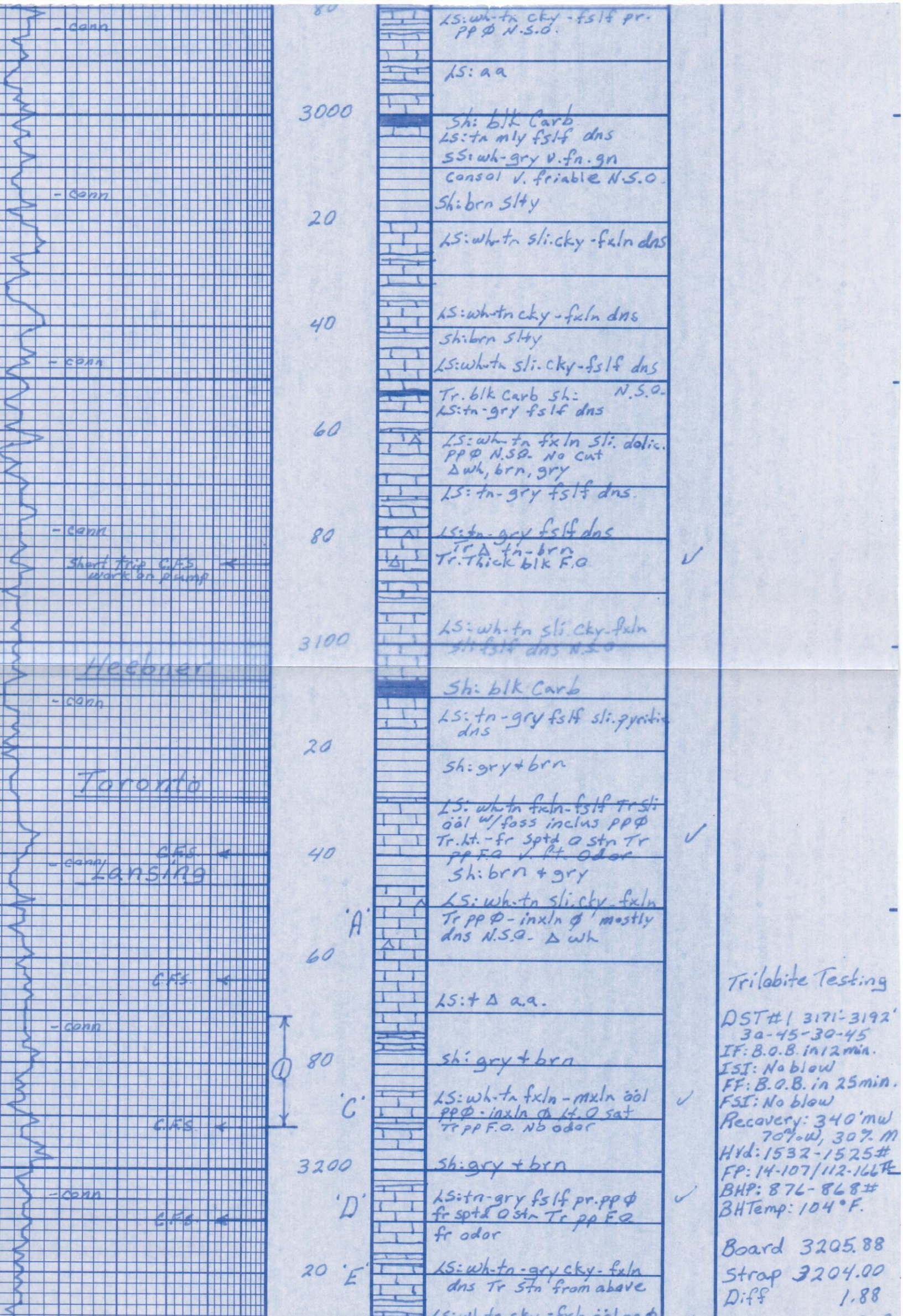
LS: a.a.

-conn

60

sh: gry + brn
LS: wh-tn sli. cky. fxl n
Tr. sli. Φ w/ foss inclus.
Tr PP Φ N.S.O.

LS: wh-tn cky. suc. fxl n
PP Φ - incls Φ N.S.O.



LS: wh-tn cky - fslf pr. ppφ N.S.O.

LS: a a

Sh: blk Carb
 LS: tn mly fslf dns
 SS: wh-gry v. fn. gn
 consol v. friable N.S.O.
 Sh: brn slty

LS: wh-tn sli.cky-fxln dns

LS: wh-tn cky-fxln dns
 Sh: brn slty

LS: wh-tn sli.cky-fslf dns

Tr. blk Carb sh: N.S.O.
 LS: tn-gry fslf dns

LS: wh-tn fxln sli. dolic.
 ppφ N.S.O. No cut
 Δ wh, brn, gry
 LS: tn-gry fslf dns.

LS: tn-gry fslf dns
 Tr Δ tn-brn
 Tr. Thick blk F.O.

LS: wh-tn sli.cky-fxln
 sli fslf dns N.S.O.

Sh: blk Carb

LS: tn-gry fslf sli. pyritic
 dns

Sh: gry + brn

LS: wh-tn fxln-fslf Tr sli
 oöl w/ foss inclus ppφ
 Tr. ht.-fr sptd o strn Tr
 pp F.O. v. Pt. odor
 Sh: brn + gry

LS: wh-tn sli.cky-fxln
 Tr ppφ-inxln φ mostly
 dns N.S.O. Δ wh

LS: + Δ a.a.

Sh: gry + brn

LS: wh-tn fxln-mxln oöl
 ppφ-inxln φ lt. O sat
 Tr pp F.O. No odor

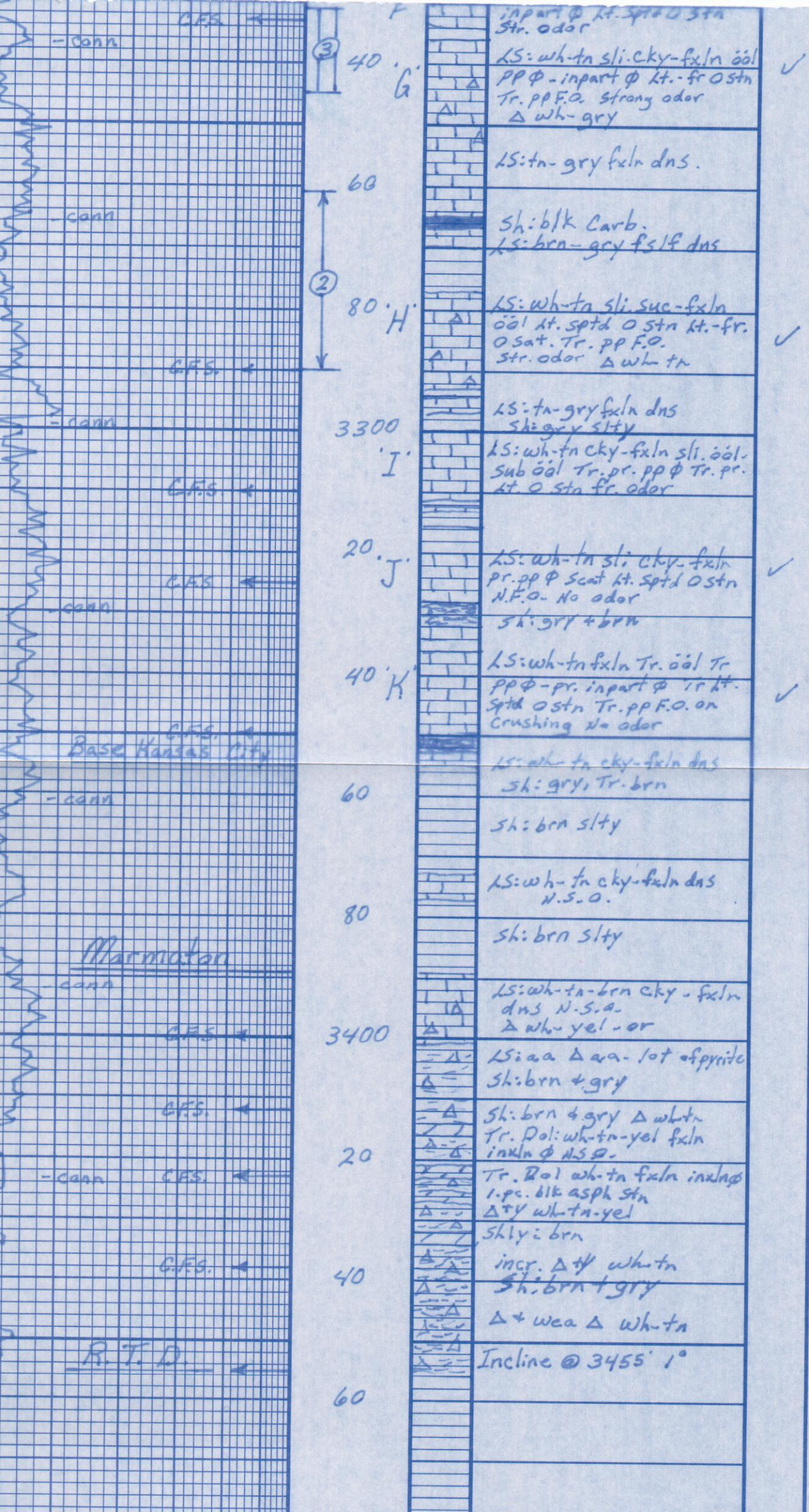
Sh: gry + brn

LS: tn-gry fslf pr. ppφ
 fr sptd o strn Tr pp F.O.
 fr odor

LS: wh-tn-gry cky-fxln
 dns Tr strn from above

LS: wh-tn cky-fxln oöl

Trilobite Testing
 DST#1 3171-3192
 30-45-30-45
 IF: B.O.B. in 12 min.
 IST: No blow
 FF: B.O.B. in 25 min.
 FSI: No blow
 Recovery: 340' mw
 70% w, 30% m
 Hvd: 1532-1525#
 FP: 14-107/112-166#
 BHP: 876-868#
 BHTemp: 104°F
 Board 3205.88
 Strap 3204.00
 Diff 1.88



DST# 2 3261-3290
45-45-45-45
IF: wk blow incr. to 6 1/4"
ISI: No blow
FF: wk blow incr. to 3"
FSI: No blow
Recovery: 165' Total
120' w/m 30% w, 70% m
45' m/w 90% w, 10% m
Hyd: 1577-1566#
FP: 9-65/78-88#
BHP: 1045-982#
BH Temp: 104°F
Chlorides: 28,000 ppm

Straddle Test
DST# 3 3231-3245'
30-45-30-45
IF: B.O.B. in 11 min.
ISI: No blow
FF: B.O.B. in 13 min.
FSI: No blow
Recovery: 479' m/w
90% w, 10% m
Hyd: 1592-1534#
FP: 15-141/139-217#
BHP: 735 734#
BH Temp: 100°F