



OIL FIELD SURVEYORS

BOX 8604 - PRATT, KS 67124  
(620) 672-6491

325143

INVOICE NO.

N-10 EXPLORATION LLC

OPERATOR

B 14

NO.

MEDICINE RIVER RANCH

FARM

Barber

COUNTY

15

S

34s

T

11w

R

825' FSL & 1980' FEL of Sec.

LOCATION

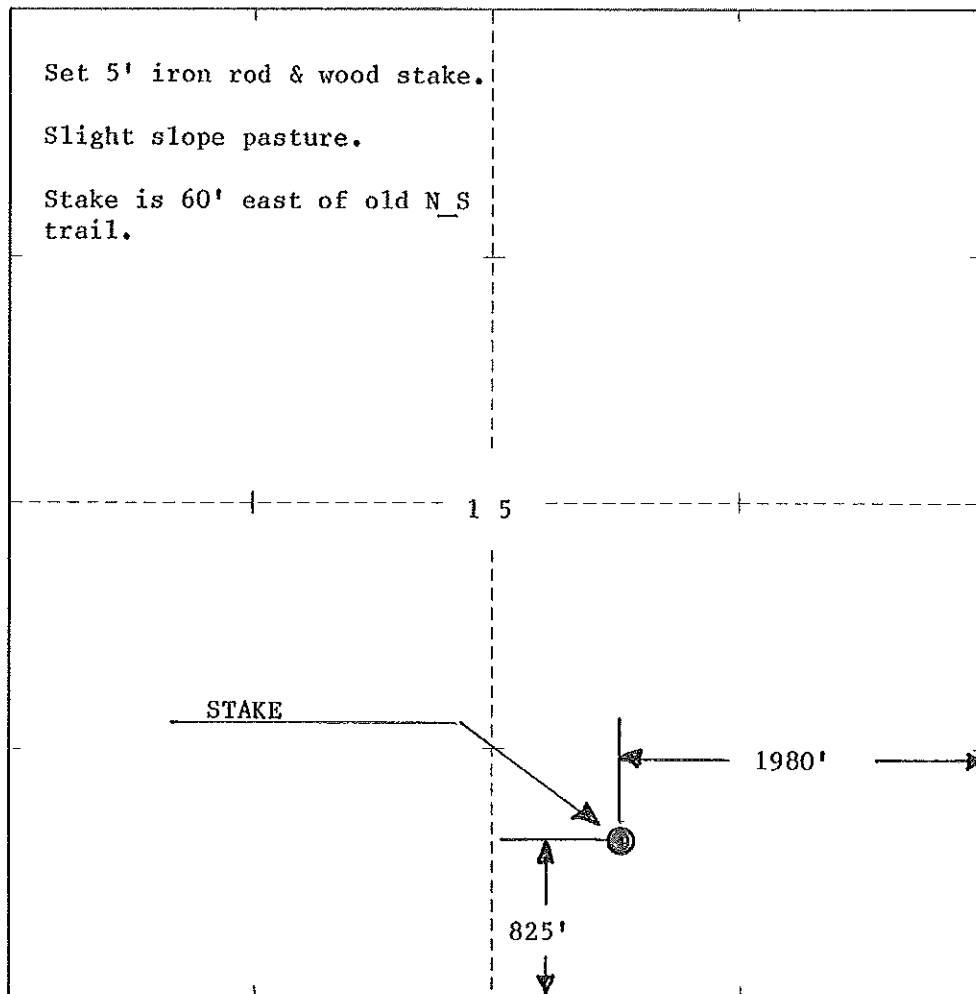
ELEVATION: 1337' GR



N-10 EXPLORATION LLC  
PO BOX 195  
Attica, KS 67009-0195

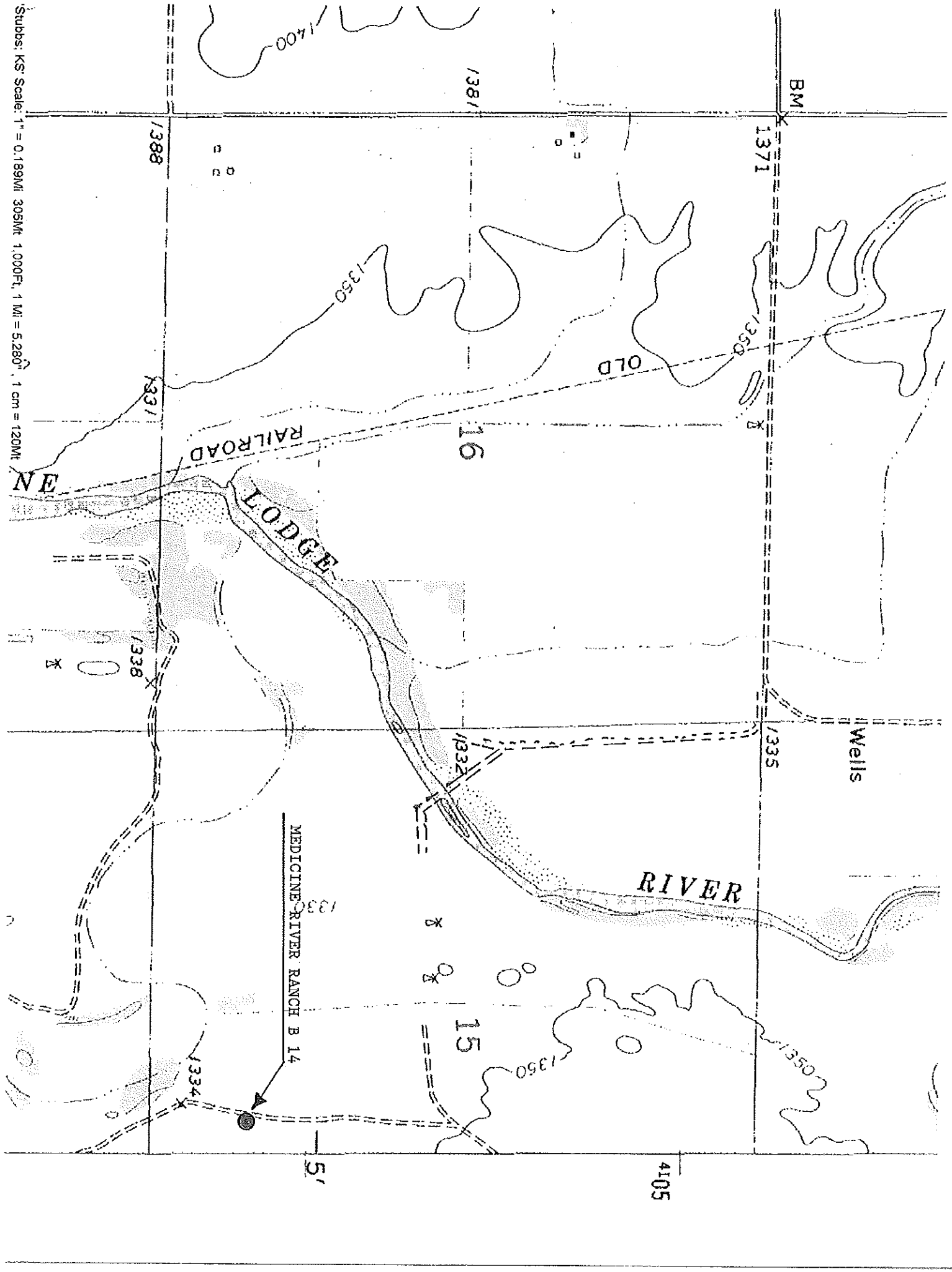
AUTHORIZED BY: Randy Newberry

SCALE: 1" = 1000'



DATE STAKED: 4/1/14

Stubbs, KS' Scale: 1" = 0.189Mi 305Mt 1,000Ft, 1 Mi = 5,280', 1 cm = 120Mt



4105

5'