

ALLIED OIL & GAS SERVICES, LLC 061100

Federal Tax I.D. # 20-8651475

REMIT TO P.O. BOX 93999
SOUTHLAKE, TEXAS 76092

SERVICE POINT: Granbury

| | | | | | | | |
|--------------------------------|--------------|-----------------|------------------|----------------------------|-------------|------------------------|-------------------------|
| DATE <u>1-15-14</u> | SE <u>6.</u> | TW <u>175</u> | RANGE <u>25W</u> | CALLED OUT | ON LOCATION | JOB START <u>12:00</u> | JOB FINISH <u>12:30</u> |
| LEASE <u>SALMENS - HOPKINS</u> | | WELL # <u>1</u> | | LOCATION <u>N2 N2 NWSE</u> | | STATE <u>TX</u> | |
| OLD OR <u>N2W</u> (Circle one) | | | | | | | |

CONTRACTOR Pickrell

TYPE OF JOB Surface

HOLE SIZE 12 1/4 T.D. _____

CASING SIZE 8 1/2 DEPTH 211.34

TUBING SIZE _____ DEPTH _____

DRILL PIPE 4 1/2 DEPTH _____

TOOL _____ DEPTH _____

PRES. MAX _____ MINIMUM _____

MEAS. LINE _____ SHOE JOINT _____

CEMENT LEFT IN CSG. 15 FT

PERFS. _____

DISPLACEMENT 17.50 bbl fresh water

OWNER _____

CEMENT AMOUNT ORDERED 150 SKS CLASS A 3MIL

2 1/2 gal

EQUIPMENT

PUMP TRUCK CEMENTER Josh Jacob

398 HELPER Mike Scoborn

BULK TRUCK # 610-170 DRIVER Kevin with house

BULK TRUCK # _____ DRIVER _____

| | | | |
|----------|-------------------|----------------|-----------------|
| COMMON | <u>150</u> | @ <u>17.90</u> | <u>2,685.00</u> |
| POZMIX | | @ | |
| GEL | <u>3</u> | @ <u>23.40</u> | <u>70.20</u> |
| CHLORIDE | <u>423</u> | @ <u>.80</u> | <u>338.40</u> |
| ASC | | @ | |
| | | @ | |
| | | @ | |
| | | @ | |
| | | @ | |
| | | @ | |
| HANDLING | <u>162.5</u> | @ <u>2.48</u> | <u>403.00</u> |
| MILEAGE | <u>7.4 x 33 x</u> | <u>2.60</u> | <u>634.92</u> |
| TOTAL | | | <u>4,131.52</u> |

REMARKS:

On location - Rig up - had safety meeting

Run 8 1/2 casing - Break circulation w/ Rig and

Run 5 bbl fresh water ahead

mix 150 SKS CLASS A 3MIL 2 1/2 gal

displace 17.50 bbl fresh water

Shut in 12:15 AM

Cement did circulate

Rig down

CHARGE TO: PICKERELL DRILLING

STREET _____

CITY _____ STATE _____ ZIP _____

SERVICE

| | | | |
|-------------------|---------------|----------------|---------------|
| DEPTH OF JOB | <u>211</u> | | |
| PUMP TRUCK CHARGE | | <u>1512.35</u> | |
| EXTRA FOOTAGE | | @ | |
| MILEAGE | <u>HUM 33</u> | @ <u>7.70</u> | <u>254.10</u> |
| MANIFOLD | | @ | |
| | <u>Hum 33</u> | @ <u>4.40</u> | <u>145.20</u> |
| | | @ | |

TOTAL 1,911.55

PLUG & FLOAT EQUIPMENT

| | | |
|-------|---|-------|
| _____ | @ | _____ |
| _____ | @ | _____ |
| _____ | @ | _____ |
| _____ | @ | _____ |
| _____ | @ | _____ |

TOTAL _____

To: Allied Oil & Gas Services, LLC.

You are hereby requested to rent cementing equipment and furnish cementer and helper(s) to assist owner or contractor to do work as is listed. The above work was done to satisfaction and supervision of owner agent or contractor. I have read and understand the "GENERAL TERMS AND CONDITIONS" listed on the reverse side.

PRINTED NAME X. Mike Kern

SIGNATURE X. Mike Kern

Thank you!!

SALES TAX (If Any) _____

TOTAL CHARGES 6,043.07

DISCOUNT 1,208.61 IF PAID IN 30 DAYS

4,834.45



Services, Inc.

CHARGE TO: **PICKRELL DRILLING**
 ADDRESS:
 CITY, STATE, ZIP CODE:

TICKET 26062

PAGE 1 OF 2

SERVICE LOCATIONS
 1. **Ness City, KS**
 2. **UNIT #1**
 3. **PICKRELL DRILLING RIG #1**
 4. **DIL**

WELL/PROJECT NO. **UNIT #1**
 LEASE **SALMANS - HOPKINS**
 COUNTY/PARISH **NESS**
 STATE **KS**
 CITY **UTICA, KS.**
 DATE **22 JAN 14**

TICKET TYPE SERVICE SALES
 CONTRACTOR **PICKRELL DRILLING RIG #1**
 RIG NAME/NO. **NESS**
 SHIPPED VIA **TRUCK**
 DELIVERED TO **OWNER**

WELL TYPE **DIL**
 WELL CATEGORY **DEVELOPMENT**
 JOB PURPOSE **4 1/2" HOUSING**
 WELL PERMIT NO. **1E, 3S, 5E, N Auto**

INVOICE INSTRUCTIONS

| PRICE REFERENCE | SECONDARY REFERENCE/ PART NUMBER | ACCOUNTING | | DESCRIPTION | MILEAGE # | QTY. | UM | QTY. | UM | UNIT PRICE | AMOUNT |
|-----------------|----------------------------------|------------|------|-----------------------------|-----------|------|----|------|----|------------|---------|
| | | LOC | ACCT | | | | | | | | |
| 5725 | | | | | 35 mi | | | | | 6.00 | 210.00 |
| 579 | | | | PUMP CHARGE | 1.508 | | | | | 2000.00 | 2000.00 |
| 402 | | | | DEURBIZERS | 2.00 | EA. | | | | 390.00 | 390.00 |
| 403 | | | | CEMENT BASKETS | 2.75 | EA. | | | | 550.00 | 550.00 |
| 407 | | | | INSERT FLDAT SHOE W/FILL | 3.25 | EA. | | | | 325.00 | 325.00 |
| 408 | | | | DV TOOL C/P LUG SET | 3.00 | EA. | | | | 300.00 | 300.00 |
| 417 | | | | DV LATEX DOWN PLUG & BAFFLE | 1.00 | EA. | | | | 200.00 | 200.00 |
| 281 | | | | MUD FLUSH | 500 | gal | | | | 1.25 | 625.00 |
| 221 | | | | KIBWD RCL | 4 | gal | | | | 25.00 | 100.00 |

LEGAL TERMS: Customer hereby acknowledges and agrees to the terms and conditions on the reverse side hereof which include, but are not limited to, **PAYMENT, RELEASE, INDEMNITY**, and **LIMITED WARRANTY** provisions.

MUST BE SIGNED BY CUSTOMER OR CUSTOMER'S AGENT PRIOR TO START OF WORK OR DELIVERY OF GOODS
 DATE SIGNED **22 JAN 14** TIME SIGNED **2:00** A.M. P.M.

REMIT PAYMENT TO:
 SWIFT SERVICES, INC.
 P.O. BOX 466
 NESS CITY, KS 67560
 785-798-2300

| SURVEY | AGREE | UN-DECIDED | DIS-AGREE | PAGE TOTAL | TOTAL |
|---|------------------------------|-----------------------------|-----------|-------------------|-----------|
| OUR EQUIPMENT PERFORMED WITHOUT BREAKDOWN? | | | | 1 | 74.00 |
| WE UNDERSTOOD AND MET YOUR NEEDS? | | | | 2 | 12,078.00 |
| OUR SERVICE WAS PERFORMED WITHOUT DELAY? | | | | 1 | 19,478.00 |
| WE OPERATED THE EQUIPMENT AND PERFORMED JOB SATISFACTORILY? | | | | 7 = 5.5 TAX @ 15% | 937.00 |
| ARE YOU SATISFIED WITH OUR SERVICE? | <input type="checkbox"/> YES | <input type="checkbox"/> NO | | | 20,415.58 |

SWIFT OPERATOR **[Signature]** APPROVAL **[Signature]**
 CUSTOMER ACCEPTANCE OF MATERIALS AND SERVICES The customer hereby acknowledges receipt of the materials and services listed on this ticket.
 Thank You!

JOB LOG

SWIFT Services, Inc.

DATE 22 JAN 14 PAGE NO.

CUSTOMER VICKRELL DRILLING

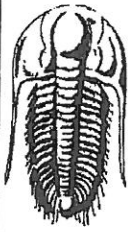
WELL NO. WIT #1

LEASE SALMANS - HOPKINS

JOB TYPE 4 1/2 LONGSTRING

TICKET NO. 26062

| CHART NO. | TIME | RATE (BPM) | VOLUME (BBL) (GAL) | PUMPS | | PRESSURE (PSI) | | DESCRIPTION OF OPERATION AND MATERIALS |
|-----------|------|------------|--------------------|-------|---|----------------|--------|---|
| | | | | T | C | TUBING | CASING | |
| | 1730 | | | | | | | ON LOCATION |
| | 1930 | | | | | | | START PIPE 4 1/2 - 10.5 # RTD @ 4504 LTDE @ 4504 SHOEST. 21.11 SET @ 4490 CENTRALIZERS 1, 2, 3, 4, 5, 6D BASKETS. 2, 6L DV TOOL # 61 @ 1940' |
| | 2133 | | | | | | | DROP BALL - CIRCULATE |
| | 2147 | 6 | 12 | | ✓ | | 400 | Pump 500 gal MUD FLUSH |
| | | 6 | 20 | | ✓ | | 400 | Pump 20 Bbl KCL FLUSH |
| | 2153 | 4 | 29 | | ✓ | | | MIX 125 SX 60/40 POZ MIX 2% GEL |
| | | 4 | 16 | | ✓ | | | MIX 75 SX STANDARD 10% SALT |
| | 2203 | | | | | | | WASH OUT PUMP & LINES |
| | 2205 | 6 | | | ✓ | | | START DISPLACING PLUG |
| | 2217 | Ø | 71 | | ✓ | | 1500 | PLUG DOWN LATCH PLUG IN |
| | 2219 | | | | | | | RELEASE PSI - DRY |
| | 2220 | | | | | | | DROP DV OPENING TOOL |
| | 2227 | | | | | | 1300 | OPEN DV TOOL |
| | 2227 | 6 | 20 | | ✓ | | | Pump 20 Bbl KCL FLUSH |
| | 2230 | | 7.5 | | ✓ | | | PLUG RA-30SX - MH 20SX |
| | 2236 | 7 1/2 | 166 | | ✓ | | 400 | MIX 300 SX SMD |
| | 2306 | | | | | | | WASH OUT PUMP & LINES |
| | 2309 | 6 | | | ✓ | | | START DISPLACING PLUG/CLOSING TOOL |
| | 2314 | Ø | 31 | | ✓ | | 1600 | PLUG DOWN - CLOSE DV TOOL |
| | 2315 | | | | | | | RELEASE PSI - DRY |
| | 2320 | | | | | | | WASH TRUCK |
| | 2345 | | | | | | | JOB COMPLETE. |
| | | | | | | | | THANKS #115 |
| | | | | | | | | JASON DAVE DOUG JUAN JOAN |



TRILOBITE TESTING, INC.

DRILL STEM TEST REPORT

Pickrell Drilling Co Inc

100 S Main STE 500
Wichita KS,67202

ATTN: Jerry Smith

7-15s-25w Ness KS

#1 Salmans Hopkins

Job Ticket: 56058

DST#: 1

Test Start: 2014.01.20 @ 13:13:00

GENERAL INFORMATION:

Formation: **Ft Scott**

Deviated: **No** Whipstock: **ft (KB)**

Time Tool Opened: 18:49:30

Time Test Ended: 23:02:15

Test Type: **Conventional Bottom Hole (Initial)**

Tester: **Cody Bloedorn**

Unit No: **73**

Interval: **4340.00 ft (KB) To 4391.00 ft (KB) (TVD)**

Total Depth: **4391.00 ft (KB) (TVD)**

Hole Diameter: **7.88 inches** Hole Condition: **Fair**

Reference Elevations: **2545.00 ft (KB)**

2535.00 ft (CF)

KB to GR/CF: **10.00 ft**

Serial #: 8875 **Inside**

Press@RunDepth: **49.67 psig @ 4341.00 ft (KB)**

Start Date: **2014.01.20**

End Date:

2014.01.20

Start Time: **13:13:05**

End Time:

23:02:15

Capacity: **8000.00 psig**

Last Calib.: **2014.01.20**

Time On Btm: **2014.01.20 @ 18:49:00**

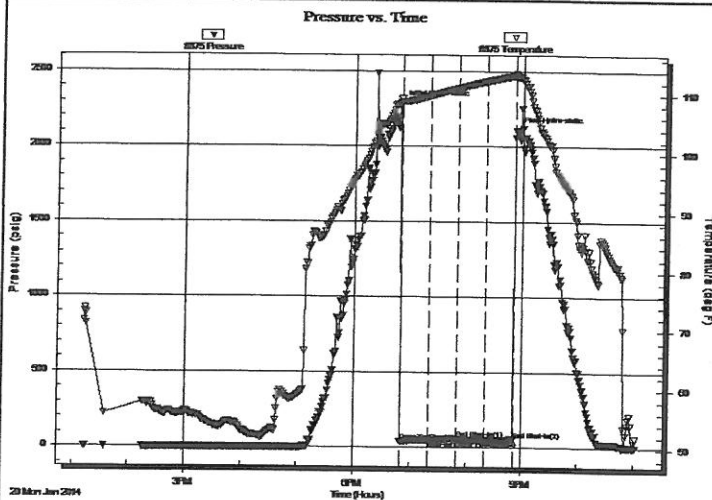
Time Off Btm: **2014.01.20 @ 20:52:00**

TEST COMMENT: **30 - IF- 1/2" blow in 16 minutes, died back to 1/4"**

30 - IS- No return

30 - FF- No blow

30 - FS- No return



PRESSURE SUMMARY

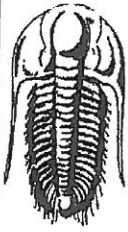
| Time (Min.) | Pressure (psig) | Temp (deg F) | Annotation |
|-------------|-----------------|--------------|----------------------|
| 0 | 2277.05 | 109.30 | Initial Hydro-static |
| 1 | 40.89 | 108.73 | Open To Flow (1) |
| 32 | 48.95 | 109.87 | Shut-In(1) |
| 61 | 60.63 | 111.16 | End Shut-In(1) |
| 61 | 49.15 | 111.17 | Open To Flow (2) |
| 91 | 49.67 | 112.30 | Shut-In(2) |
| 122 | 55.91 | 113.31 | End Shut-In(2) |
| 123 | 2101.48 | 113.38 | Final Hydro-static |

Recovery

| Length (ft) | Description | Volume (bbl) |
|-------------|-------------|--------------|
| 5.00 | Mud, 100%M | 0.02 |
| | | |
| | | |
| | | |
| | | |

Gas Rates

| Choke (inches) | Pressure (psig) | Gas Rate (Mcf/d) |
|----------------|-----------------|------------------|
| | | |



TRILOBITE
TESTING, INC.

DRILL STEM TEST REPORT

FLUID SUMMARY

Pickrell Drilling Co Inc

7-15s-25w Ness KS

100 S Main STE 500
Wichita KS,67202

#1 Salmans Hopkins

Job Ticket: 56058

DST#: 1

ATTN: Jerry Smith

Test Start: 2014.01.20 @ 13:13:00

Mud and Cushion Information

| | | | |
|----------------------------------|----------------------------|-----------------|---------|
| Mud Type: Gel Chem | Cushion Type: | Oil API: | deg API |
| Mud Weight: 9.00 lb/gal | Cushion Length: ft | Water Salinity: | ppm |
| Viscosity: 80.00 sec/qt | Cushion Volume: bbl | | |
| Water Loss: 7.80 in ³ | Gas Cushion Type: | | |
| Resistivity: ohm.m | Gas Cushion Pressure: psig | | |
| Salinity: 2500.00 ppm | | | |
| Filter Cake: inches | | | |

Recovery Information

Recovery Table

| Length ft | Description | Volume bbl |
|--------------|-------------|---------------|
| 5.00 | Mud, 100%M | 0.025 |

Total Length: 5.00 ft Total Volume: 0.025 bbl

Num Fluid Samples: 0

Num Gas Bombs: 0

Serial #:

Laboratory Name:

Laboratory Location:

Recovery Comments:

Serial #: 8875

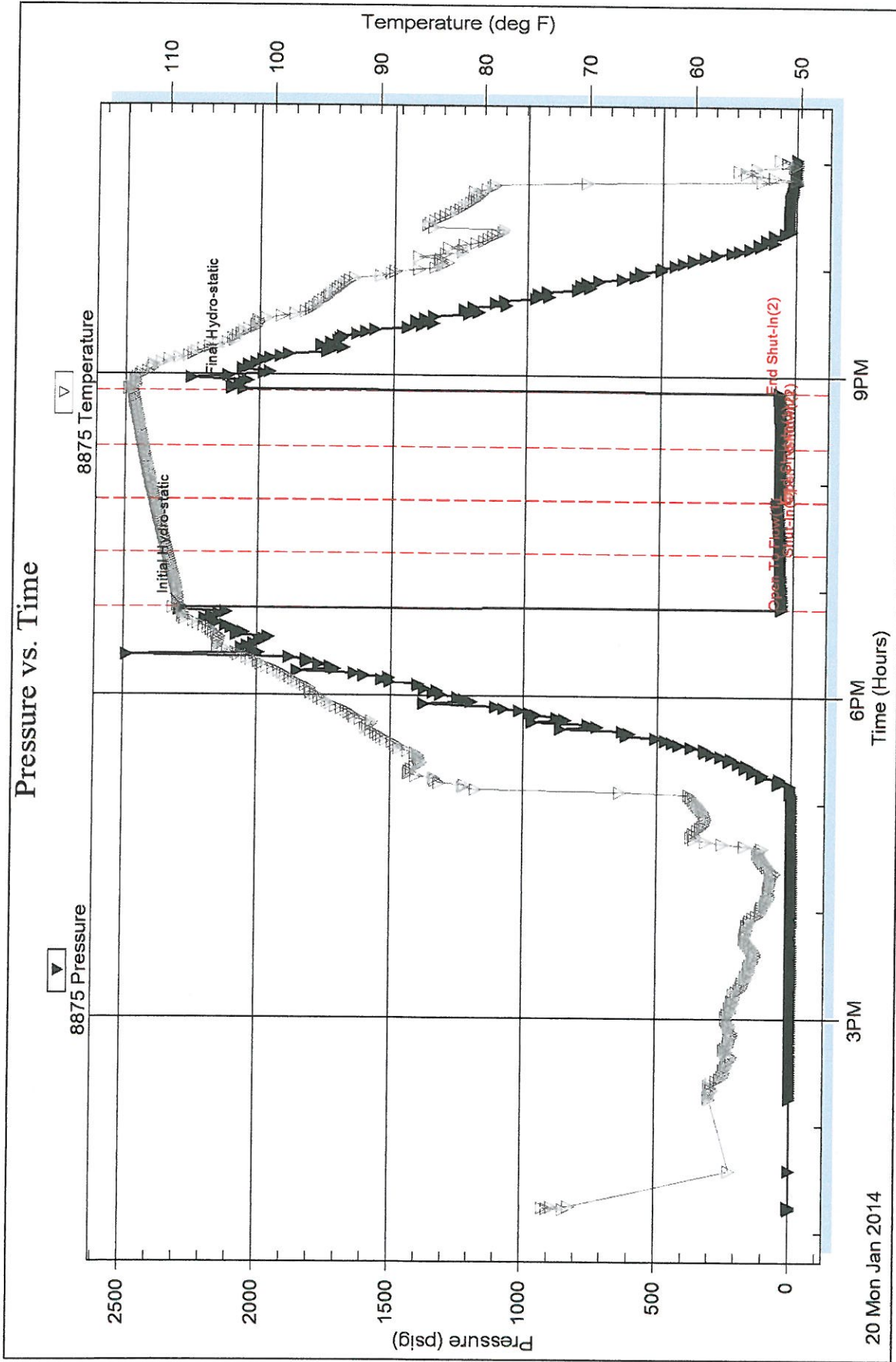
Inside

Pickrell Drilling Co Inc

#1 Salmans Hopkins

DST Test Number: 1

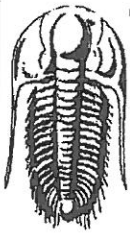
Pressure vs. Time



Trilobite Testing, Inc

Ref. No: 56058

Printed: 2014.01.21 @ 01:02:22



TRILOBITE TESTING, INC.

DRILL STEM TEST REPORT

Pickrell Drilling Co Inc

100 S Main STE 500
Wichita KS, 67202

ATTN: Jerry Smith

7-15s-25w Ness KS

#1 Salmans Hopkins

Job Ticket: 56059

DST#: 2

Test Start: 2014.01.21 @ 15:25:00

GENERAL INFORMATION:

Formation: **Mississippi**

Deviated: No Whipstock: ft (KB)

Time Tool Opened: 17:30:30

Time Test Ended: 02:43:30

Test Type: Conventional Bottom Hole (Reset)

Tester: Cody Bloedorn

Unit No: 73

Interval: **4414.00 ft (KB) To 4502.00 ft (KB) (TVD)**

Total Depth: 4502.00 ft (KB) (TVD)

Hole Diameter: 7.88 inches Hole Condition: Fair

Reference Elevations: 2545.00 ft (KB)

2535.00 ft (CF)

KB to GR/CF: 10.00 ft

Serial #: 6799

Inside

Press@RunDepth: 279.54 psig @ 4415.00 ft (KB)

Start Date: 2014.01.21

End Date:

2014.01.22

Start Time: 15:25:05

End Time:

02:43:30

Capacity: 8000.00 psig

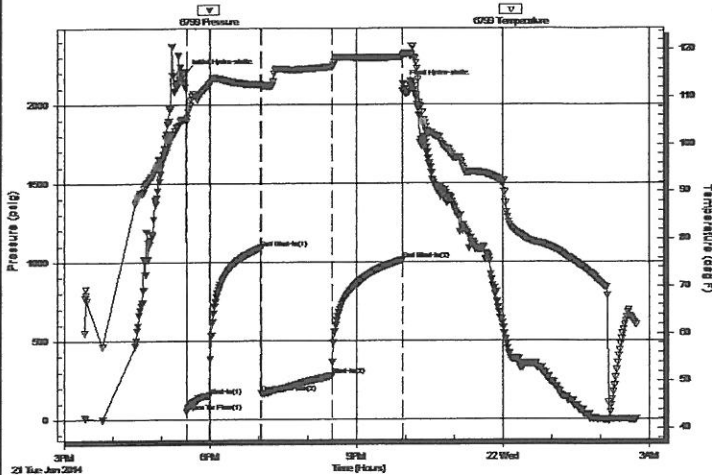
Last Calib.: 2014.01.22

Time On Btm: 2014.01.21 @ 17:29:45

Time Off Btm: 2014.01.21 @ 21:57:30

TEST COMMENT: 30 - IF- B.O.B. in 12 minutes
60 - IS- Surface return
90 - FF- B.O.B. in 29 minutes
90 - FS- Surface return

Pressure vs. Time



PRESSURE SUMMARY

| Time (Min.) | Pressure (psig) | Temp (deg F) | Annotation |
|-------------|-----------------|--------------|----------------------|
| 0 | 2204.92 | 105.27 | Initial Hydro-static |
| 1 | 51.81 | 104.92 | Open To Flow (1) |
| 29 | 152.03 | 112.65 | Shut-In(1) |
| 92 | 1088.83 | 112.69 | End Shut-In(1) |
| 93 | 166.22 | 112.41 | Open To Flow (2) |
| 181 | 279.54 | 116.36 | Shut-In(2) |
| 267 | 1011.89 | 118.36 | End Shut-In(2) |
| 268 | 2129.85 | 118.84 | Final Hydro-static |

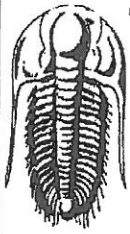
Recovery

| Length (ft) | Description | Volume (bbl) |
|-------------|-------------------------|--------------|
| 124.00 | HOCM, 50%M, 50%O | 0.61 |
| 496.00 | GHOCM, 10%G, 40%M, 50%O | 5.90 |
| 93.00 | GO, 40%G, 60%O | 1.30 |
| | | |
| | | |

* Recovery from multiple tests

Gas Rates

| Choke (inches) | Pressure (psig) | Gas Rate (Mcf/d) |
|----------------|-----------------|------------------|
| | | |



**TRILOBITE
TESTING, INC.**

DRILL STEM TEST REPORT

FLUID SUMMARY

Pickrell Drilling Co Inc

7-15s-25w Ness KS

100 S Main STE 500
Wichita KS,67202

#1 Salmans Hopkins

Job Ticket: 56059

DST#: 2

ATTN: Jerry Smith

Test Start: 2014.01.21 @ 15:25:00

Mud and Cushion Information

Mud Type: Gel Chem

Mud Weight: 9.00 lb/gal

Viscosity: 75.00 sec/qt

Water Loss: 8.79 in³

Resistivity: ohm.m

Salinity: 2800.00 ppm

Filter Cake: inches

Cushion Type:

Cushion Length: ft

Cushion Volume: bbl

Gas Cushion Type:

Gas Cushion Pressure: psig

Oil API:

Water Salinity: deg API

deg API

ppm

Recovery Information

Recovery Table

| Length ft | Description | Volume bbl |
|--------------|-------------------------|---------------|
| 124.00 | HOCM, 50%M, 50%O | 0.610 |
| 496.00 | GHOCM, 10%G, 40%M, 50%O | 5.901 |
| 93.00 | GO, 40%G, 60%O | 1.305 |

Total Length: 713.00 ft Total Volume: 7.816 bbl

Num Fluid Samples: 0

Num Gas Bombs: 0

Serial #:

Laboratory Name:

Laboratory Location:

Recovery Comments:

Serial #: 6799

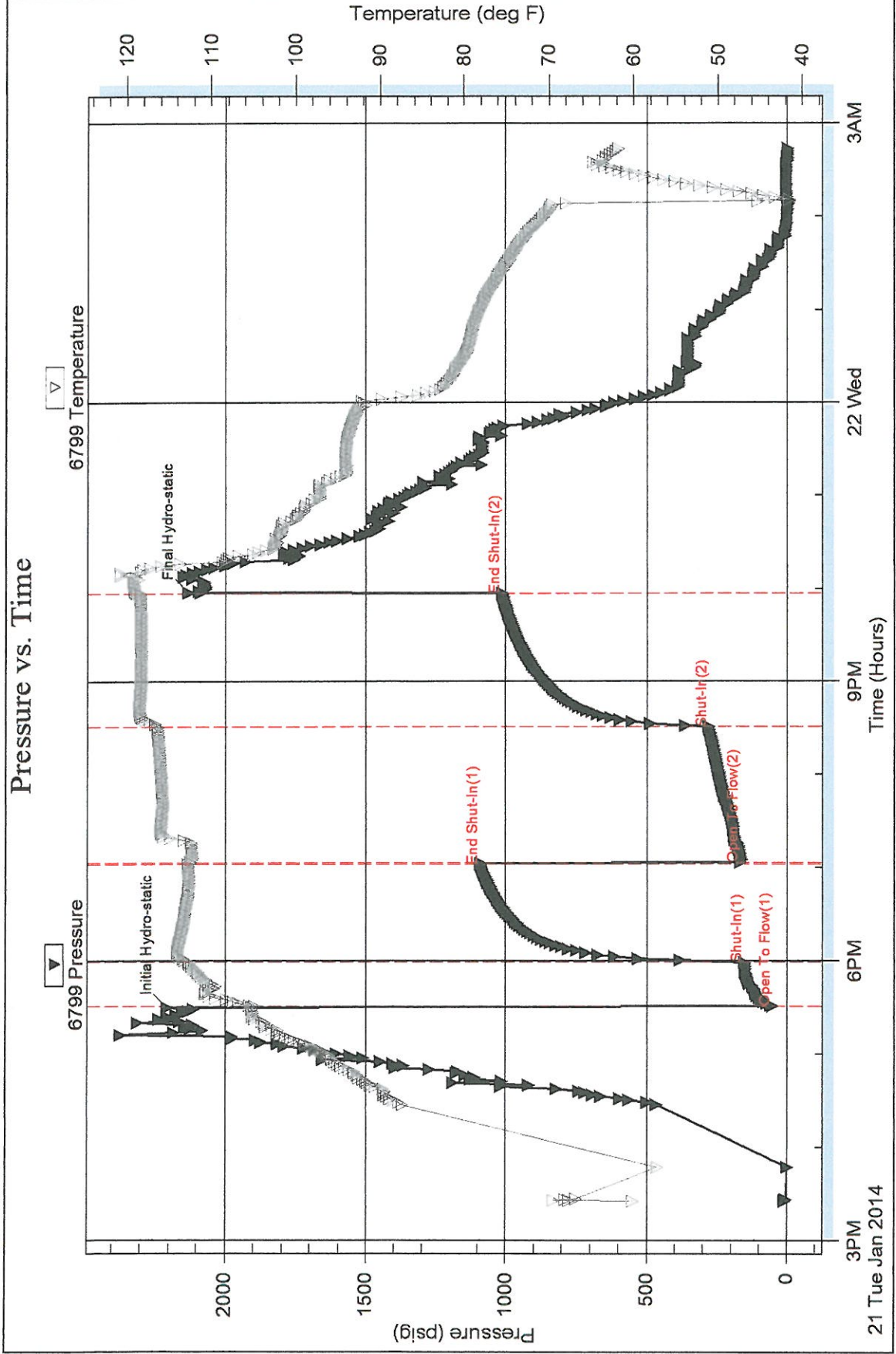
Inside

Pickrell Drilling Co Inc

#1 Salmans Hopkins

DST Test Number: 2

Pressure vs. Time



Trilobite Testing, Inc

Ref. No: 56059

Printed: 2014.01.22 @ 03:57:52

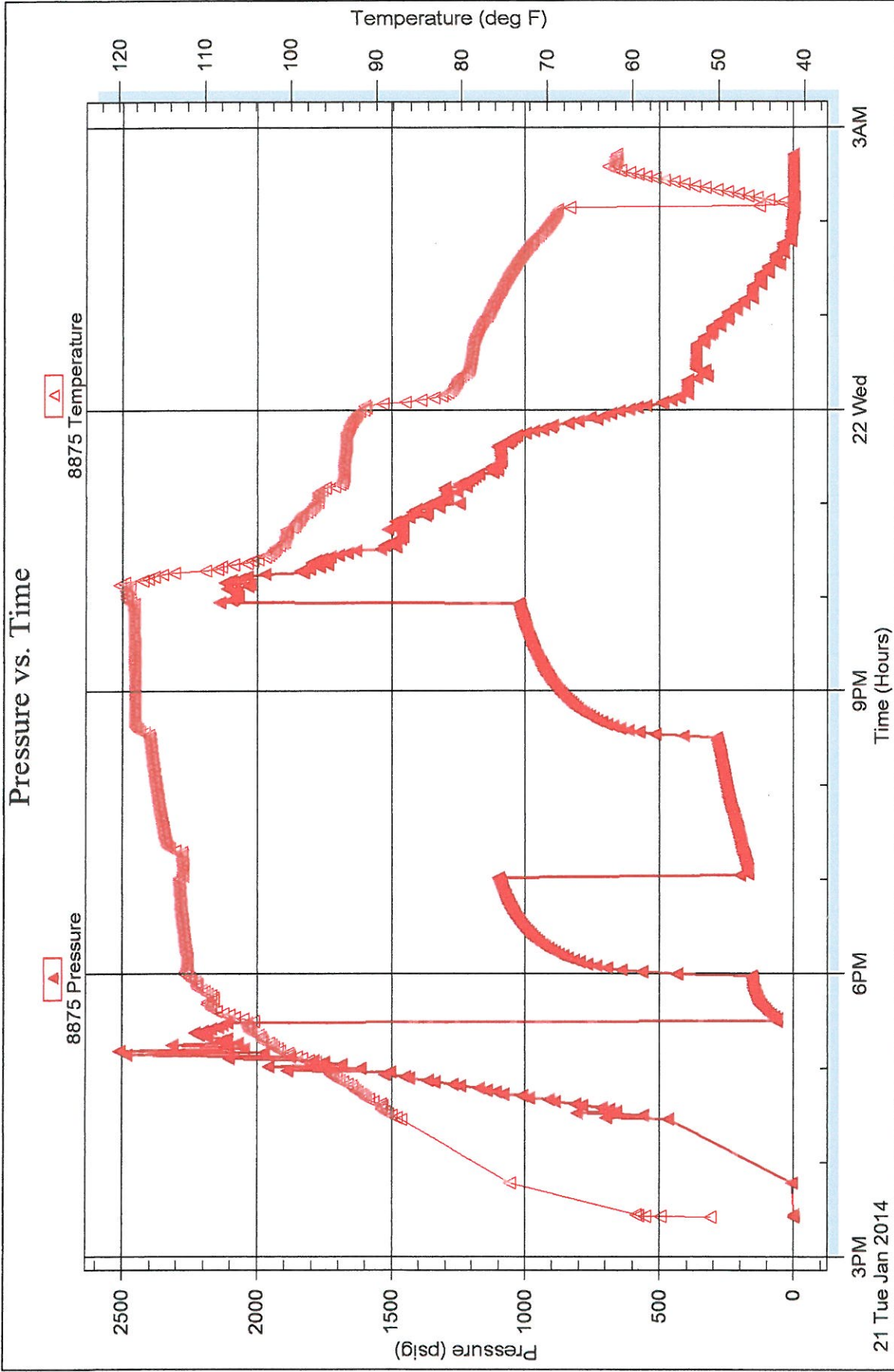
DST Test Number: 2

#1 Salmans Hopkins

Outside Rickrell Drilling Co Inc

Serial #: 8875

Pressure vs. Time



Printed: 2014.01.22 @ 03:57:52

Ref. No: 56059

Trilobite Testing, Inc