

1752 74 2804 1
1256' 3/4° 3310' 3/4°
1731' 3/4° 4391' 1 1/4°

VERT. LOG SCALE: 2" = 100'

1800

50

1900

50

2000

3600

ANHYDRITE
1882 (+663) SMPL
1881 (+664) LOG

B/ANHYDRITE
1914 (+631) SMPL
1913 (+632) LOG

VERT. LOG SCALE: 5" = 100'

20

40

60

80



3700

SH - RED, GRN, GY.

SH - RED, GRN, GY.

20

SH - RED, GRN, GY.

SH - RED, GRN, GY.

40

SH - RED, GRN, GY.

SH - RED, GRN, GY.

60

SH - RED, GRN, GY.

SH - RED, GRN, GY.

80

SH - RED, GRN, GY. w/
ARB. VM, SET CNK.

LM - GRN. FX. CNKX
FOSS IN PT.

3800

LM - AA. SCAR COMID
V.GY. Ø. N.S.

SH - BLK. CARB.

HEEBNER
3811 (-1266) SMPL & LOG

20

LM - LT GY. FX. DSE.

SH - M → DK GY.

LM - GRN. LT GY. FX.
DSE → SCAR VGY Ø.
N.S.

LM - AA. No Vis Ø.

40

SH - M GY. CALC.

LANSING
3850 (-1305) SMPL
3852 (-1307) LOG

60

LM - GRN. FX. CNKX
IN PT. VGY IN PT.
FOSS. N.S.

SH - M GY.

LM - GRN. FX. DSE →
CNKX.

80

SH - DK GY. CALC.

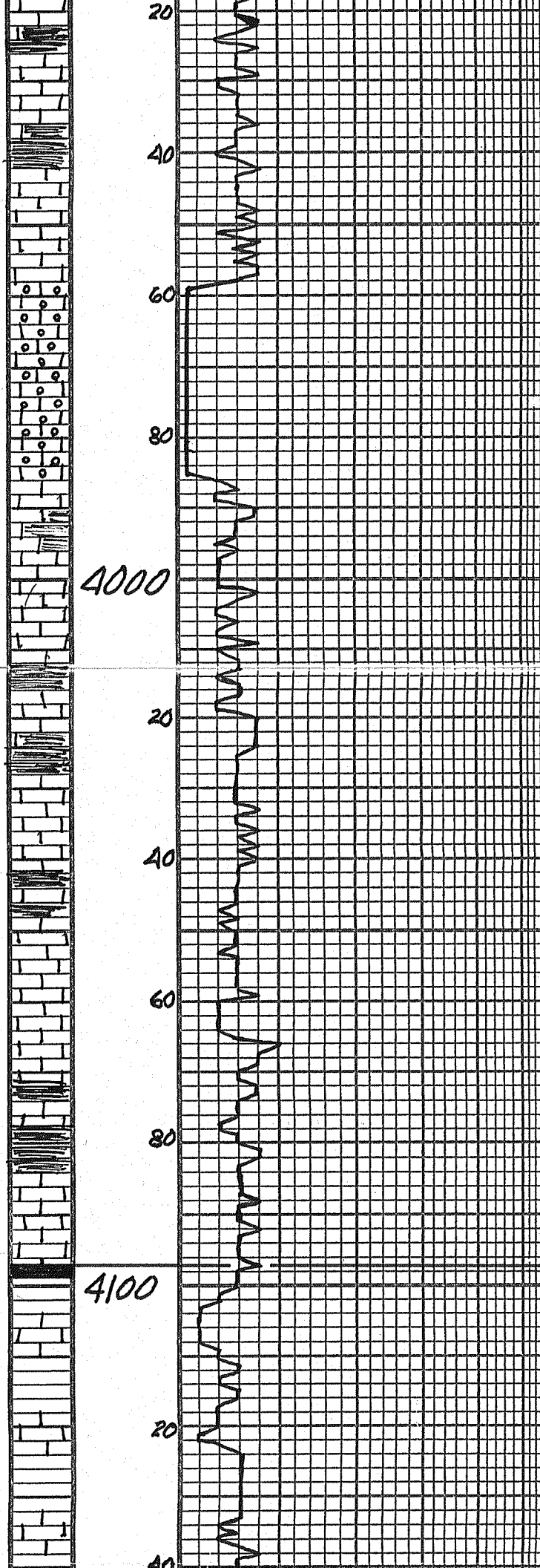
SH - M → DK GY.

3900

LM - GRN. FX. DSE.

LM - GRN. FX. - FR VGY
Ø. N.S.

LM - GRN. LT GY. FX.



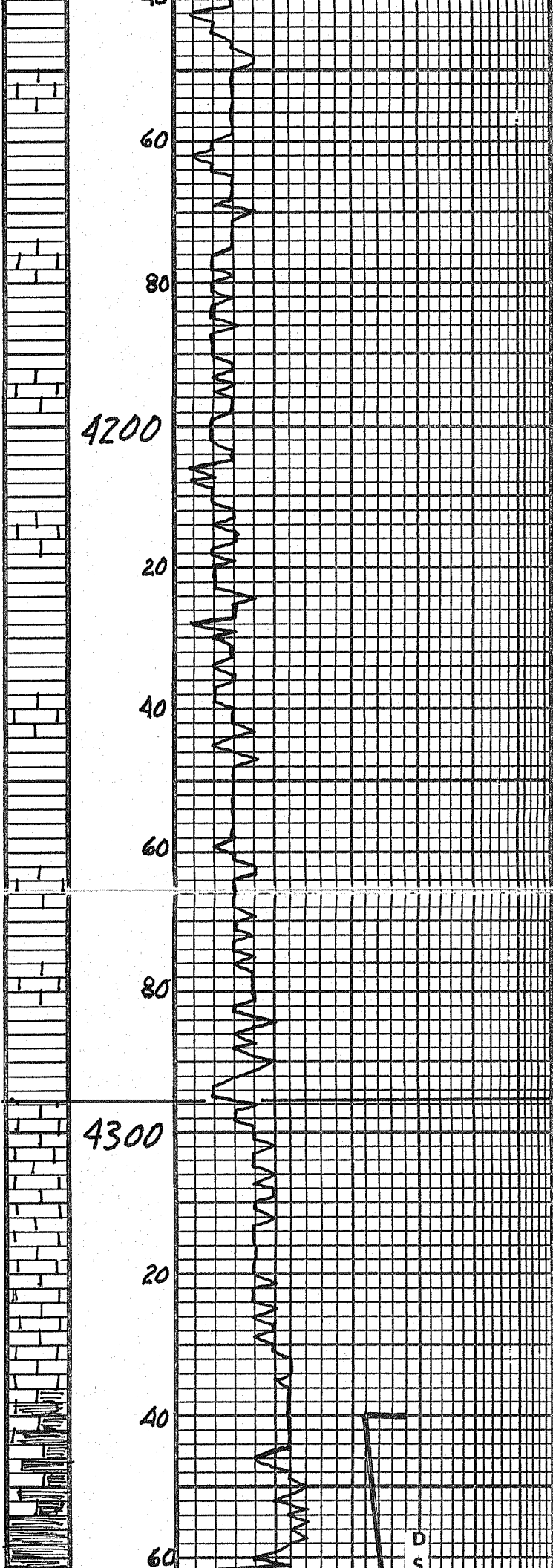
DSE → CHRY.
 Lm - AA. SHLY.
 Lm - CRM. FX. DSE.
 Lm - AA. CHRY.
 Lm - CRM. FX. GR
 COMED. D. VIS.
 Lm - AA.
 Lm - AA.
 Lm - CRM, GY. FX.
 DSE.
 Lm - AA.
 Lm - AA.
 Lm - CRM, GY. FX.
 DSE. SHLY.
 Lm - CRM. FX. DSE.
 Lm - AA.
 SH - M → DK GY.
 Lm - CRM. FX. GR
 SCAT. VGY. D. VIS.
 Lm - CRM. FX. DSE.
 SH - M → DK GY.
 Lm - CRM. FX. DSE.
 Lm - AA. w/ ABD RED
 GY. SH.
 ABD. BIR. CARR. SH.
 PREDOM. RED. GEN. GY.
 SH w/ SCAT. Lm - M
 GY, FX, DSE Lm.
 SH & SCAT Lm - AA.
 PREDOM. RED. GEN. GY.
 SH w/ SCAT. CRM
 CHRY Lm.

MUD @ 4071':
 9.3 WT, 56 VIS, 8.8 FILT,
 2800 CHLOR, 1# LCM

STARK
 4097 (-1552) SMPL
 4099 (-1554) LOG

4000

4100



SH $\frac{1}{2}$ CHRY LM-AA.

SH $\frac{1}{2}$ CHRY LM-AA.

SH $\frac{1}{2}$ CHRY LM-AA.

LM - Lem. Lm. by. FX. DSE.
 SH - GR, GR, GRN,
 BLK.

LM $\frac{1}{2}$ SH-AA.

LM - GRN, Lm. by. FX. DSE.
 CHRY. SH. DSE.
 RED. MAROON. GR, GRN,
 BLK. TR. SH.

LM $\frac{1}{2}$ SH-AA.

SH - RED. MAROON. GR,
 GRN. BLK. TR. SH.
 SCAT. LM - Lm. by. FX. DSE.

SH $\frac{1}{2}$ SCAT LM-AA.

SH $\frac{1}{2}$ SCAT LM-AA.

SH $\frac{1}{2}$ SCAT LM-AA.

SH $\frac{1}{2}$ SCAT LM-AA.

SH $\frac{1}{2}$ SCAT LM-AA.

LM - Lem. Lm. by. FX. DSE.
 SUB - CHRY. SH.
 CHRY. M. by. DSE. GRN. SH.
 DSE. ABG. GR. GRN. SH.

LM, CHRY, SH-AA.

LM - M. by. FX. DSE. HD.
 TR. WH, SET. CHRY.

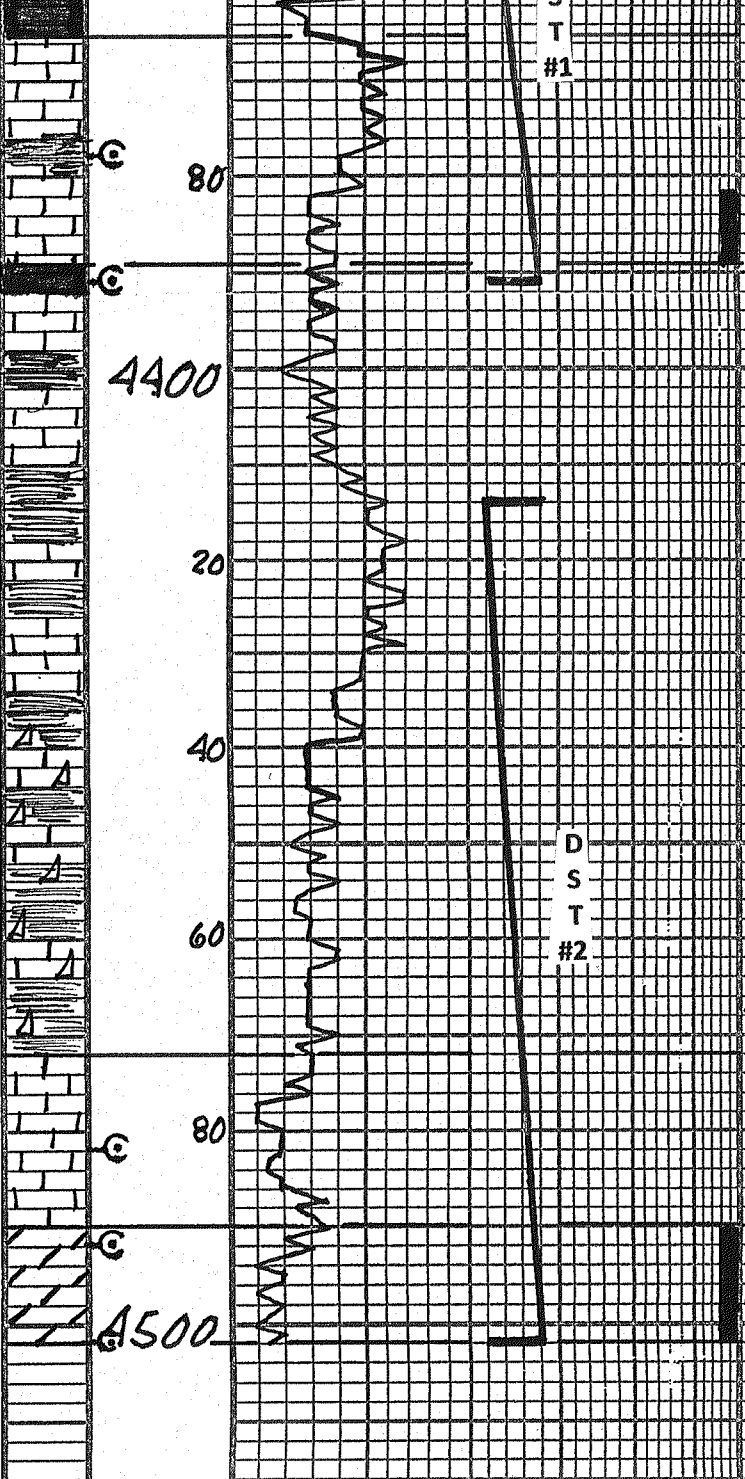
LM-AA.

LM-AA. ARGILL.

LM-AA. ARGILL.

PAWNEE
 4295 (-1750) SMPL
 4298 (-1753) LOG

MUD @ 4387':
 9.35 WT, 80 VIS, 7.8 FILT,
 2500 CHLOR, TR LCM



SH - BLK. CARB.
 LM - LT - M Gy. FX. OOLIT. w/ FF w/ SEAM ISOLATED SANDS. FR ODR. BRN STN IN D.
 LM - M - DK Gy. FX. DSE. w/ ABD DK Gy SH.
 LM - H - M Gy. FX. Base in P. Fr. Fr. Fr. Vail Pass. M.D. Fr. ODR. FR SUB DR. FO.
 SH - BLK. CARB.
 LM - CRM. LT - M Gy. FX. DSE. FR VAIL SET CAR.
 LM - AA - w/ ABD M Gy. Gy - GRN SH.
 LM - M - M - DK Gy. w/ LM - M - DK Gy. FX. DSE.
 SH - M - DK Gy. Gy - GRN. w/ LM - AA.
 SH & LM - AA.
 LM & SH - AA w/ SEAM CHN. w/ VAIL SET CAR. Fr. ODR. Fr. SEAM. SH. DSE. FR BLK. DEAD STN.
 VARIOUS SH, LM, CNT.
 VARIOUS SH, LM, CNT - AA CHKY. WK. FREETING ODR.
 LM - GRN. LT. Gy. FX. DSE. w/ SEAM. WK. ODR. SH. DSE. CHN. FR GY. FR. Dolo. w/ FR VGY. Fr. WK. FREET. ODR.
 LM - WK. CHKY - M Gy. FX. DSE. No Vis. Fr. NS. V. ODR. ODR.
 LM - WK. CHKY - M Gy. FX. DSE. No Vis. Fr. NS. No ODR.
 FR Dolo - WK. Fr. FAY Sugar. DSE. w/ Gy. BRN. Fr. FR VGY. Fr. DK STN. FR SHO FGO. FR ODR. Dolo - Gy - M. FX. Fr - Gy VGY. Fr. ODR. Fr - Gy SHO FGO. Fr - Gy DK BRN STN.

FT. SCOTT
 4365 (-1820) SMPL
 4369 (-1824) LOG

CHEROKEE
 4389 (-1844) SMPL
 4393 (-1848) LOG

PIPE STRAP @ 4391':
 4412.28 STRAP
 4408.37 BOARD
 3.91 LONG
 (VERY WINDY)

MUD @ 4474':
 9.35 WT, 75 VIS, 8.8 FILT,
 2800 CHLOR, 0 LCM
 MISSISSIPPIAN
 4472 (-1927) SMPL & LOG

DOLOMITE POROSITY
 4490 (-1945) SMPL & LOG

TOTAL DEPTH
 4502 (-1957) ROTARY
 4504 (-1959) LOG

DST #1: 4340-91
 30-30-30-30

IF: 1/2" TO 1/4" BLOW
 ISI: NO RETURN
 FF: NO BLOW
 FSI: NO RETURN

RECOVERY:
 5' MUD

SIP'S: 60-49 #
 FP'S: 40-48/49-49 #
 HP'S: 2277-2101 #
 BHT: 113° F

DST #2: 4414-4502
 30-60-90-90

IF: BOB IN 12 MIN.
 ISI: SURF. RETURN
 FF: BOB IN 29 MIN.
 FSI: SURF. RETURN

RECOVERY:
 124' HOCM
 (50% O, 50% M)
 496' GHOCM
 (10% G, 50% O, 40% M)
 93' GO
 (40% G, 60% O)
 713' TOTAL FLUID, NW

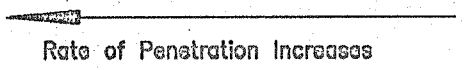
SIP'S: 1088-1011 #
 FP'S: 51-152/166-279 #
 HP'S: 2204-2129 #
 BHT: 118° F

4600

LITHOLOGY

DEPTH

5" 10" 15" 20" 25"
 DRILLING TIME MINUTES/FOOT



SAMPLE DESCRIPTIONS

REMARKS

COMPANY: PICKRELL DRILLING COMPANY, INC.

ELEVATION: 2545 KB

LEASE: #1 SALMANS-HOPKINS UNIT

LOCATION: 2338' FSL & 1980' FEL

SEC 7

TWP 17

RGE 25 W

COUNTY: NESS

STATE: KANSAS