



**TRILOBITE TESTING, INC**

# DRILL STEM TEST REPORT

O'Brien Resources, LLC

2 17s 30w Lane, Ks

PO Box 6149  
Shreveport, LA 71136

Sharp Seed 2 #2

Job Ticket: 55697

DST#: 1

ATTN: Kurt Talbott

Test Start: 2014.02.12 @ 07:16:00

## GENERAL INFORMATION:

Formation: **LKC - A-C**

Deviated: No Whipstock: ft (KB)

Time Tool Opened: 10:06:00

Time Test Ended: 15:53:15

Test Type: Conventional Bottom Hole (Initial)

Tester: Bradley Walter

Unit No: 69

Interval: **3925.00 ft (KB) To 3980.00 ft (KB) (TVD)**

Reference Elevations: 2857.00 ft (KB)

Total Depth: 3980.00 ft (KB) (TVD)

2850.00 ft (CF)

Hole Diameter: 7.88 inches Hole Condition: Good

KB to GR/CF: 7.00 ft

**Serial #: 8522 Outside**

Press@RunDepth: 62.87 psig @ 3926.00 ft (KB)

Capacity: 8000.00 psig

Start Date: 2014.02.12

End Date:

2014.02.12

Last Calib.:

2014.02.12

Start Time: 07:16:05

End Time:

15:53:15

Time On Btm:

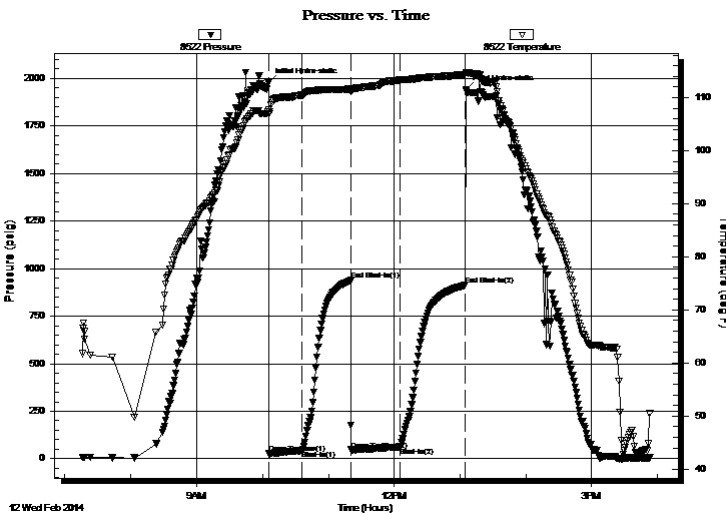
2014.02.12 @ 10:05:45

Time Off Btm:

2014.02.12 @ 13:05:30

TEST COMMENT: IF: 7" blow.  
IS: No return.  
FF: 8" blow.  
FS: No return.

## PRESSURE SUMMARY



Time (Min.)	Pressure (psig)	Temp (deg F)	Annotation
0	1978.73	107.72	Initial Hydro-static
1	27.28	106.97	Open To Flow (1)
31	43.84	110.44	Shut-In(1)
75	937.91	111.59	End Shut-In(1)
76	46.72	111.34	Open To Flow (2)
120	62.87	113.32	Shut-In(2)
179	912.64	114.36	End Shut-In(2)
180	1941.78	114.73	Final Hydro-static

## Recovery

Length (ft)	Description	Volume (bbl)
45.00	ocm 40o 60m	0.63
45.00	oil 100o	0.63

## Gas Rates

	Choke (inches)	Pressure (psig)	Gas Rate (Mcf/d)



**TRILOBITE  
TESTING, INC**

# DRILL STEM TEST REPORT

## FLUID SUMMARY

O'Brien Resources, LLC

**2 17s 30w Lane, Ks**

PO Box 6149  
Shreveport, LA 71136

**Sharp Seed 2 #2**

Job Ticket: 55697

**DST#: 1**

ATTN: Kurt Talbott

Test Start: 2014.02.12 @ 07:16:00

### Mud and Cushion Information

Mud Type: Gel Chem

Cushion Type:

Oil API:

32 deg API

Mud Weight: 9.00 lb/gal

Cushion Length:

ft

Water Salinity:

0 ppm

Viscosity: 45.00 sec/qt

Cushion Volume:

bbbl

Water Loss: 7.00 in<sup>3</sup>

Gas Cushion Type:

Resistivity: ohm.m

Gas Cushion Pressure:

psig

Salinity: 2100.00 ppm

Filter Cake: 1.00 inches

### Recovery Information

Recovery Table

Length ft	Description	Volume bbl
45.00	ocm 40o 60m	0.631
45.00	oil 100o	0.631

Total Length: 90.00 ft      Total Volume: 1.262 bbl

Num Fluid Samples: 0

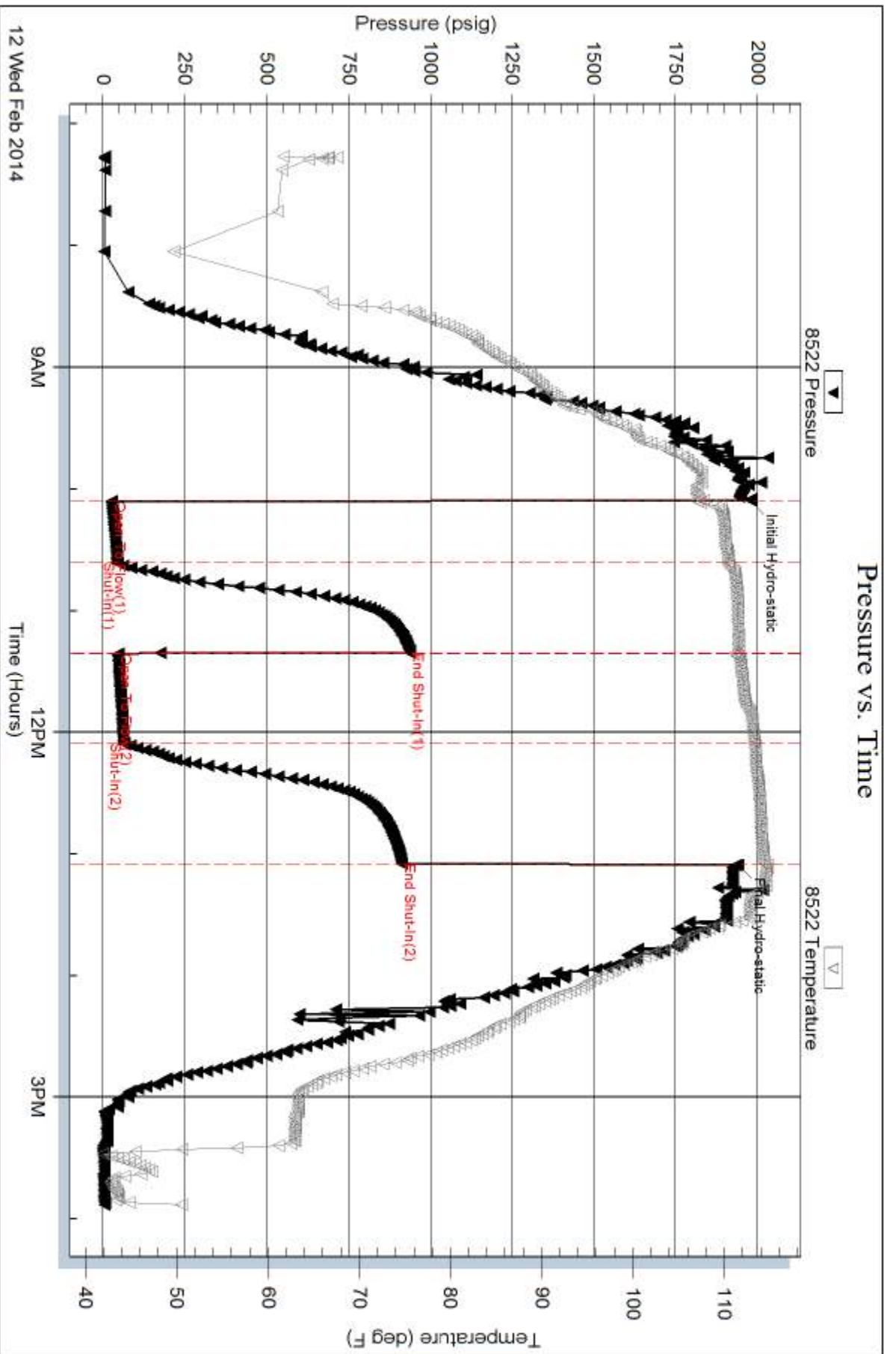
Num Gas Bombs: 0

Serial #:

Laboratory Name:

Laboratory Location:

Recovery Comments:





**TRILOBITE  
TESTING, INC.**

# DRILL STEM TEST REPORT

O'Brien Resources, LLC

2 17s 30w Lane, Ks

PO Box 6149  
Shreveport, LA 71136

**Sharp Seep 2 #2**

Job Ticket: 55698

**DST#: 2**

ATTN: Kurt Talbott

Test Start: 2014.02.13 @ 14:48:00

## GENERAL INFORMATION:

Formation: **140 - 160**  
 Deviated: No Whipstock: ft (KB)  
 Time Tool Opened: 17:46:15  
 Time Test Ended: 22:16:15  
 Interval: **4092.00 ft (KB) To 4175.00 ft (KB) (TVD)**  
 Total Depth: 4175.00 ft (KB) (TVD)  
 Hole Diameter: 7.88 inches Hole Condition: Good  
 Test Type: Conventional Bottom Hole (Reset)  
 Tester: Bradley Walter  
 Unit No: 69  
 Reference Elevations: 2857.00 ft (KB)  
 2850.00 ft (CF)  
 KB to GR/CF: 7.00 ft

## Serial #: 8522

Outside

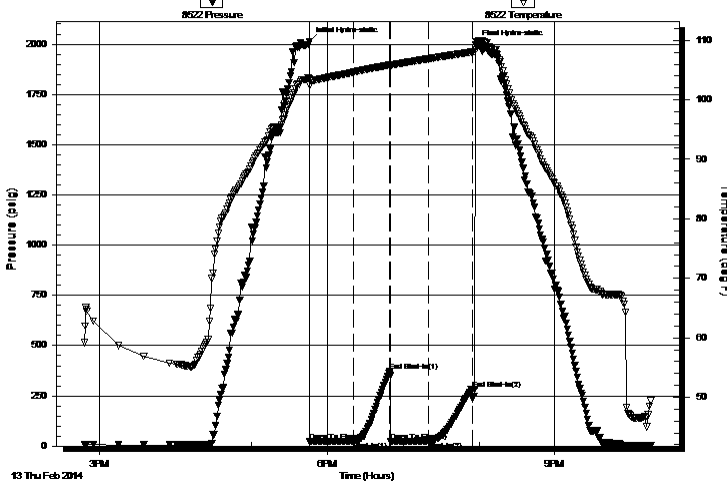
Press @ RunDepth: 25.63 psig @ 4093.00 ft (KB) Capacity: 8000.00 psig  
 Start Date: 2014.02.13 End Date: 2014.02.13 Last Calib.: 2014.02.13  
 Start Time: 14:48:05 End Time: 22:16:14 Time On Btm: 2014.02.13 @ 17:46:00  
 Time Off Btm: 2014.02.13 @ 19:57:15

TEST COMMENT: IF: Surface blow .  
 IS: No return.  
 FF: No blow .  
 FS: No return.

## PRESSURE SUMMARY

Time (Min.)	Pressure (psig)	Temp (deg F)	Annotation
0	2013.82	103.56	Initial Hydro-static
1	23.77	102.44	Open To Flow (1)
35	25.01	104.66	Shut-In(1)
64	371.49	105.86	End Shut-In(1)
64	24.40	105.79	Open To Flow (2)
95	25.63	106.92	Shut-In(2)
129	281.73	108.02	End Shut-In(2)
132	1995.27	108.82	Final Hydro-static

## Pressure vs. Time



## Recovery

Length (ft)	Description	Volume (bbl)
10.00	mud 100m (oil spots)	0.14

## Gas Rates

Choke (inches)	Pressure (psig)	Gas Rate (Mcf/d)

\* Recovery from multiple tests



**TRILOBITE  
TESTING, INC.**

# DRILL STEM TEST REPORT

**FLUID SUMMARY**

O'Brien Resources, LLC

**2 17s 30w Lane, Ks**

PO Box 6149  
Shreveport, LA 71136

**Sharp Seep 2 #2**

Job Ticket: 55698

**DST#: 2**

ATTN: Kurt Talbott

Test Start: 2014.02.13 @ 14:48:00

## Mud and Cushion Information

Mud Type: Gel Chem

Cushion Type:

Oil API:

0 deg API

Mud Weight: 9.00 lb/gal

Cushion Length:

ft

Water Salinity:

0 ppm

Viscosity: 42.00 sec/qt

Cushion Volume:

bbbl

Water Loss: 7.99 in<sup>3</sup>

Gas Cushion Type:

Resistivity: ohm.m

Gas Cushion Pressure:

psig

Salinity: 1900.00 ppm

Filter Cake: 1.00 inches

## Recovery Information

Recovery Table

Length ft	Description	Volume bbbl
10.00	mud 100m (oil spots)	0.140

Total Length: 10.00 ft      Total Volume: 0.140 bbl

Num Fluid Samples: 0

Num Gas Bombs: 0

Serial #:

Laboratory Name:

Laboratory Location:

Recovery Comments:

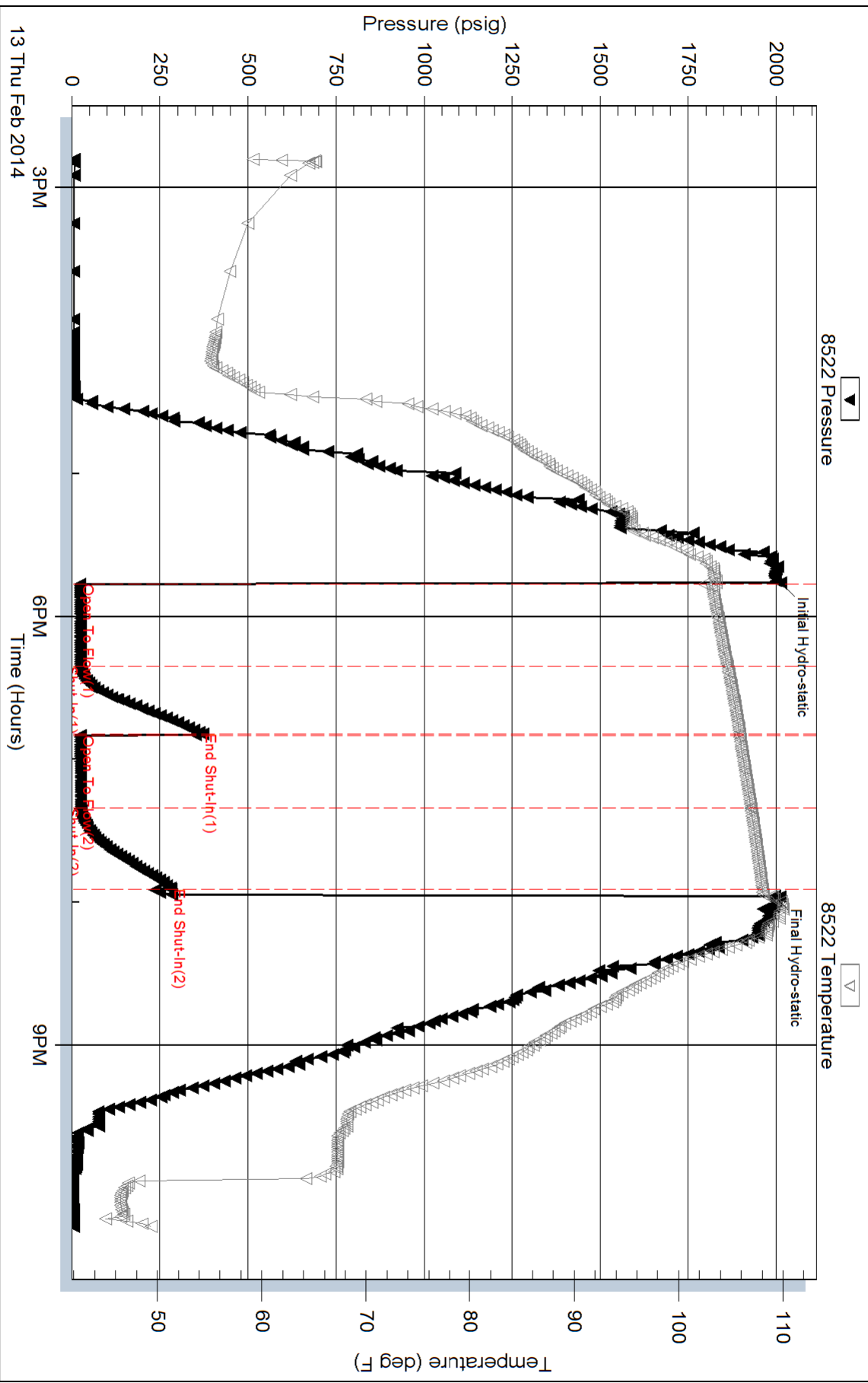
Serial #: 8522

Outside O'Brien Resources, LLC

Sharp Seep 2 #2

DST Test Number: 2

### Pressure vs. Time





**TRILOBITE TESTING, INC.**

# DRILL STEM TEST REPORT

O'Brien Resources, LLC

2 17s 30w Lane, Ks

PO Box 6149  
Shreveport, LA 71136

Sharp Seep 2 #2

Job Ticket: 55699

DST#: 3

ATTN: Kurt Talbott

Test Start: 2014.02.14 @ 16:54:00

## GENERAL INFORMATION:

Formation: **220**  
 Deviated: No Whipstock: ft (KB)  
 Time Tool Opened: 20:00:45  
 Time Test Ended: 01:53:00  
 Interval: **4248.00 ft (KB) To 4270.00 ft (KB) (TVD)**  
 Total Depth: 4270.00 ft (KB) (TVD)  
 Hole Diameter: 7.88 inches Hole Condition: Good  
 Test Type: Conventional Bottom Hole (Reset)  
 Tester: Bradley Walter  
 Unit No: 69  
 Reference Elevations: 2857.00 ft (KB)  
 2850.00 ft (CF)  
 KB to GR/CF: 7.00 ft

## Serial #: 8522

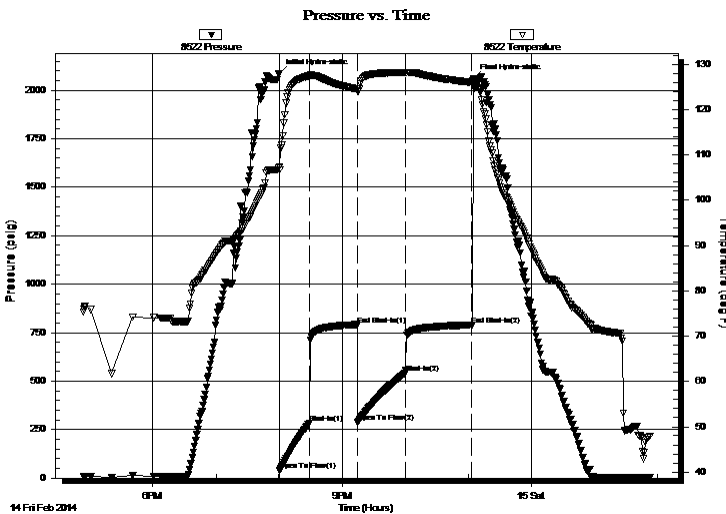
Outside

Press @ Run Depth: 541.82 psig @ 4249.00 ft (KB) Capacity: 8000.00 psig  
 Start Date: 2014.02.14 End Date: 2014.02.15 Last Calib.: 2014.02.15  
 Start Time: 16:54:05 End Time: 01:53:00 Time On Btm: 2014.02.14 @ 20:00:30  
 Time Off Btm: 2014.02.14 @ 23:05:00

TEST COMMENT: IF: BOB @ 5 min.  
 IS: No return.  
 FF: BOB @ 7 min.  
 FS: No return.

## PRESSURE SUMMARY

Time (Min.)	Pressure (psig)	Temp (deg F)	Annotation
0	2087.22	107.38	Initial Hydro-static
1	39.52	106.69	Open To Flow (1)
29	282.19	127.47	Shut-In(1)
75	789.25	124.54	End Shut-In(1)
75	287.48	124.29	Open To Flow (2)
120	541.82	128.19	Shut-In(2)
183	789.69	126.10	End Shut-In(2)
185	2059.78	125.91	Final Hydro-static



## Recovery

Length (ft)	Description	Volume (bbl)
1070.00	Smcw 3m97w (oil spots in tool)	15.01

\* Recovery from multiple tests

## Gas Rates

Choke (inches)	Pressure (psig)	Gas Rate (Mcf/d)



**TRILOBITE  
TESTING, INC.**

# DRILL STEM TEST REPORT

**FLUID SUMMARY**

O'Brien Resources, LLC

**2 17s 30w Lane, Ks**

PO Box 6149  
Shreveport, LA 71136

**Sharp Seep 2 #2**

Job Ticket: 55699

**DST#: 3**

ATTN: Kurt Talbott

Test Start: 2014.02.14 @ 16:54:00

## Mud and Cushion Information

Mud Type: Gel Chem

Cushion Type:

Oil API:

0 deg API

Mud Weight: 9.00 lb/gal

Cushion Length:

ft

Water Salinity:

65000 ppm

Viscosity: 55.00 sec/qt

Cushion Volume:

bbbl

Water Loss: 7.20 in<sup>3</sup>

Gas Cushion Type:

Resistivity: ohm.m

Gas Cushion Pressure:

psig

Salinity: 2000.00 ppm

Filter Cake: 1.00 inches

## Recovery Information

Recovery Table

Length ft	Description	Volume bbl
1070.00	Smcw 3m 97w (oil spots in tool)	15.009

Total Length: 1070.00 ft      Total Volume: 15.009 bbl

Num Fluid Samples: 0

Num Gas Bombs: 0

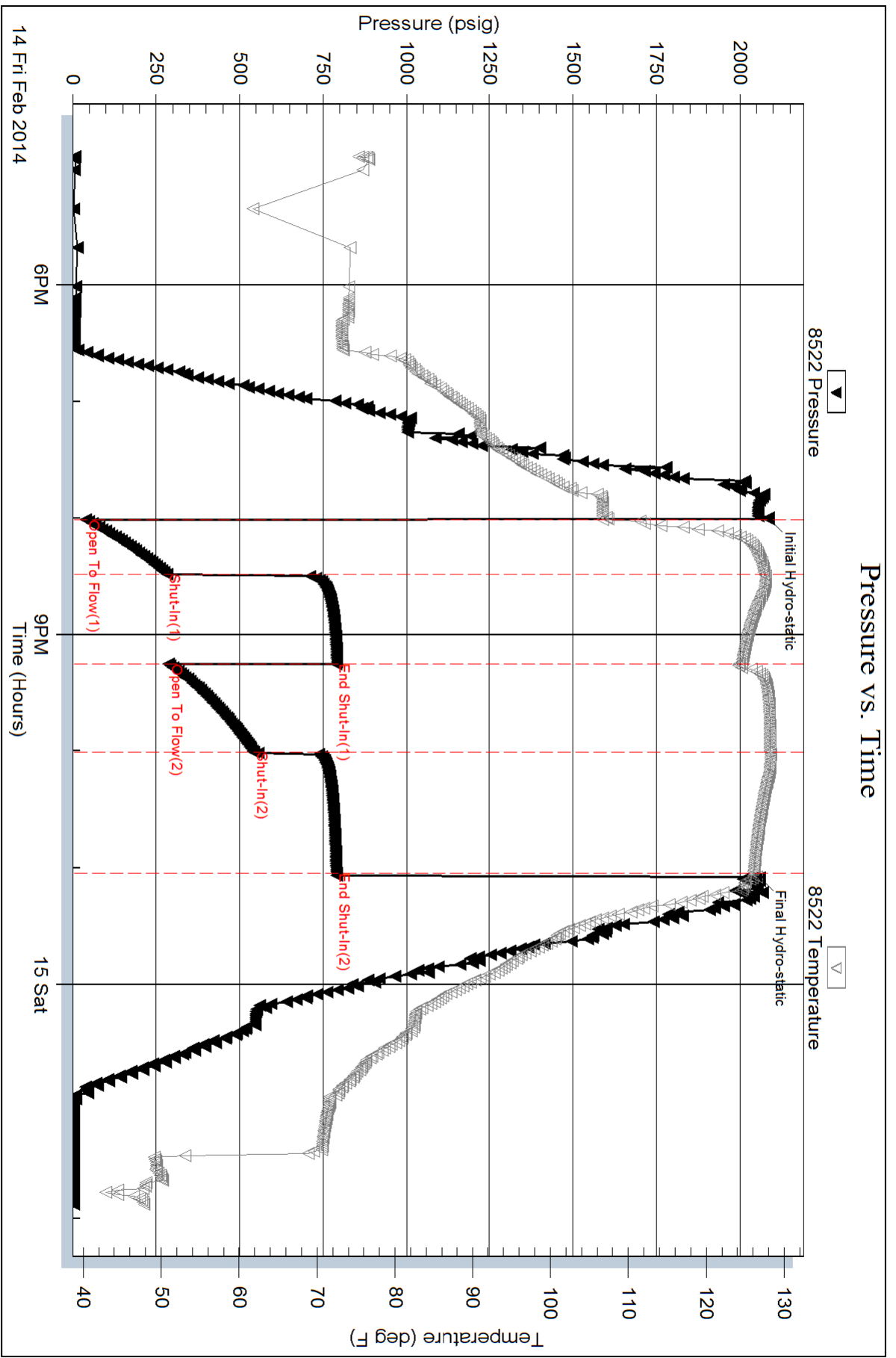
Serial #:

Laboratory Name:

Laboratory Location:

Recovery Comments: rw is .189 @ 43f = 65000ppm







**TRILOBITE  
TESTING, INC.**

# DRILL STEM TEST REPORT

O'Brien Resources, LLC

2 17s 30w Lane, Ks

PO Box 6149  
Shreveport, LA 71136

**Sharp Seep 2 #2**

Job Ticket: 55700

**DST#: 4**

ATTN: Kurt Talbott

Test Start: 2014.02.15 @ 17:28:00

## GENERAL INFORMATION:

Formation: **Altamont - Marmaton**

Deviated: No Whipstock: ft (KB)

Time Tool Opened: 21:01:45

Time Test Ended: 03:55:30

Test Type: Conventional Bottom Hole (Reset)

Tester: Bradley Walter

Unit No: 69

**Interval: 4295.00 ft (KB) To 4390.00 ft (KB) (TVD)**

Total Depth: 4390.00 ft (KB) (TVD)

Hole Diameter: 7.88 inches Hole Condition: Good

Reference Elevations: 2857.00 ft (KB)

2850.00 ft (CF)

KB to GR/CF: 7.00 ft

**Serial #: 8522 Outside**

Press @ Run Depth: 185.57 psig @ 4296.00 ft (KB)

Start Date: 2014.02.15

End Date:

2014.02.16

Start Time: 17:28:05

End Time:

03:55:30

Capacity: 8000.00 psig

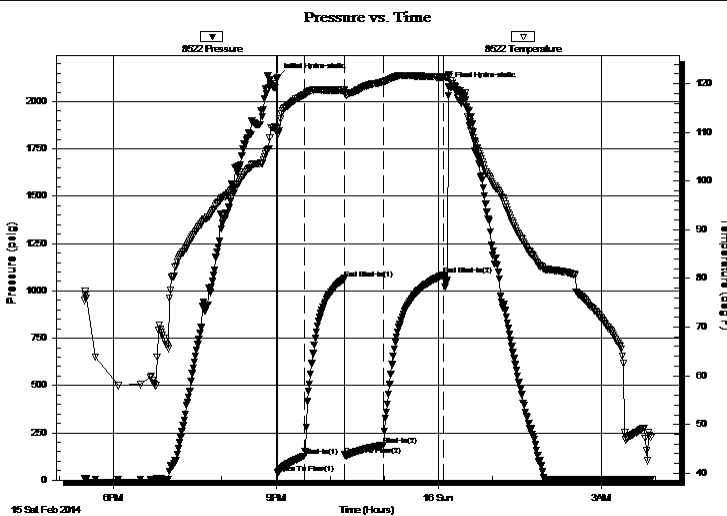
Last Calib.: 2014.02.16

Time On Btm: 2014.02.15 @ 21:01:30

Time Off Btm: 2014.02.16 @ 00:11:00

**TEST COMMENT:** IF: BOB @ 4 min.  
IS: 2" return.  
FF: BOB @ 7 min.  
FS: 4" return.

## PRESSURE SUMMARY



Time (Min.)	Pressure (psig)	Temp (deg F)	Annotation
0	2125.05	110.83	Initial Hydro-static
1	38.67	109.63	Open To Flow (1)
30	127.21	117.69	Shut-In(1)
75	1065.32	118.71	End Shut-In(1)
75	133.70	118.24	Open To Flow (2)
117	185.57	120.31	Shut-In(2)
184	1084.84	121.35	End Shut-In(2)
190	2080.53	121.92	Final Hydro-static

## Recovery

Length (ft)	Description	Volume (bbl)
60.00	gocm 20g 30o 50m	0.84
340.00	gmco 40g 20m 40o	4.77
0.00	720' GIP	0.00

## Gas Rates

	Choke (inches)	Pressure (psig)	Gas Rate (Mcf/d)

\* Recovery from multiple tests



**TRILOBITE  
TESTING, INC.**

# DRILL STEM TEST REPORT

**FLUID SUMMARY**

O'Brien Resources, LLC

**2 17s 30w Lane, Ks**

PO Box 6149  
Shreveport, LA 71136

**Sharp Seep 2 #2**

Job Ticket: 55700

**DST#: 4**

ATTN: Kurt Talbott

Test Start: 2014.02.15 @ 17:28:00

## Mud and Cushion Information

Mud Type: Gel Chem

Cushion Type:

Oil API:

0 deg API

Mud Weight: 9.00 lb/gal

Cushion Length:

ft

Water Salinity:

0 ppm

Viscosity: 50.00 sec/qt

Cushion Volume:

bbbl

Water Loss: 7.00 in<sup>3</sup>

Gas Cushion Type:

Resistivity: ohm.m

Gas Cushion Pressure:

psig

Salinity: 2500.00 ppm

Filter Cake: 1.00 inches

## Recovery Information

Recovery Table

Length ft	Description	Volume bbl
60.00	gocm 20g 30o 50m	0.842
340.00	gmco 40g 20m 40o	4.769
0.00	720' GIP	0.000

Total Length: 400.00 ft      Total Volume: 5.611 bbl

Num Fluid Samples: 0

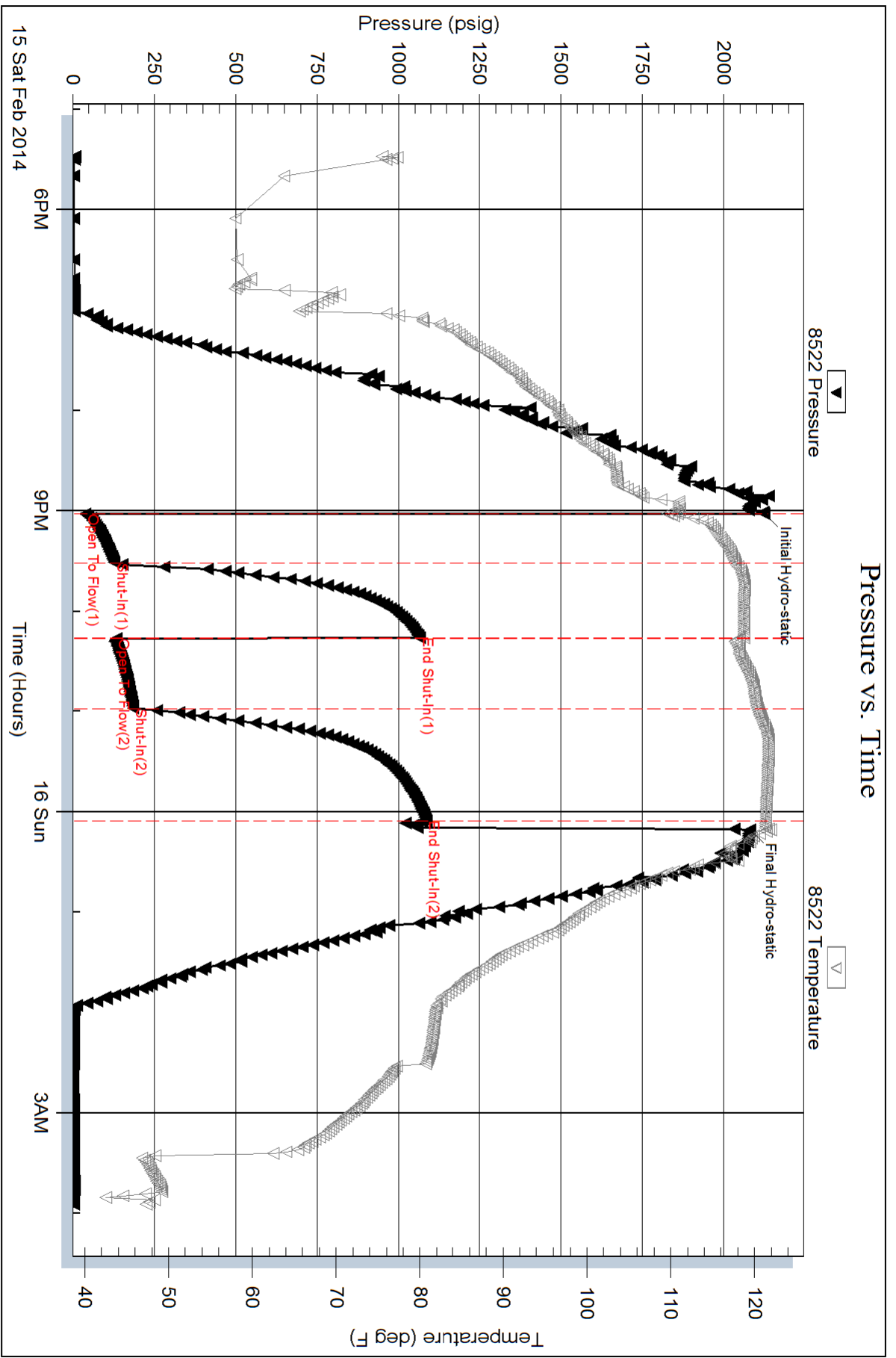
Num Gas Bombs: 0

Serial #:

Laboratory Name:

Laboratory Location:

Recovery Comments:





**TRILOBITE  
TESTING, INC.**

# DRILL STEM TEST REPORT

O'Brien Resources, LLC

2 17s 30w Lane, Ks

PO Box 6149  
Shreveport, LA 71136

**Sharp Seep 2 #2**

Job Ticket: 56376

**DST#: 5**

ATTN: Kurt Talbott

Test Start: 2014.02.16 @ 20:33:00

## GENERAL INFORMATION:

Formation: **Pawnee - Myric Stati**

Deviated: No Whipstock: ft (KB)

Time Tool Opened: 23:51:45

Time Test Ended: 06:12:00

Test Type: Conventional Bottom Hole (Reset)

Tester: Bradley Walter

Unit No: 69

**Interval: 4390.00 ft (KB) To 4435.00 ft (KB) (TVD)**

Total Depth: 4435.00 ft (KB) (TVD)

Hole Diameter: 7.88 inches Hole Condition: Good

Reference Elevations: 2857.00 ft (KB)

2850.00 ft (CF)

KB to GR/CF: 7.00 ft

**Serial #: 8522 Outside**

Press @ Run Depth: 130.32 psig @ 4391.00 ft (KB)

Start Date: 2014.02.16

End Date:

2014.02.17

Start Time: 20:33:05

End Time:

06:12:00

Capacity: 8000.00 psig

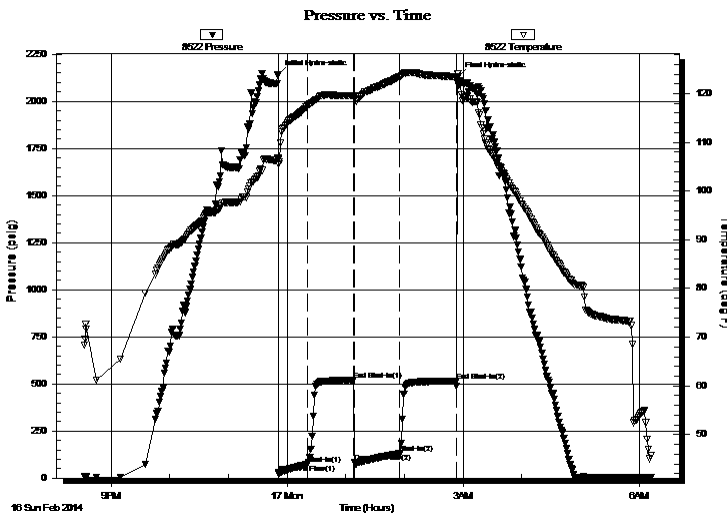
Last Calib.: 2014.02.17

Time On Btm: 2014.02.16 @ 23:51:30

Time Off Btm: 2014.02.17 @ 02:55:00

**TEST COMMENT:** IF: BOB @ 4 min.  
IS: No return.  
FF: BOB @ 2 min.  
FS: 2" return.

## PRESSURE SUMMARY



Time (Min.)	Pressure (psig)	Temp (deg F)	Annotation
0	2142.50	106.55	Initial Hydro-static
1	24.28	105.56	Open To Flow (1)
30	73.51	117.57	Shut-In(1)
77	519.21	119.60	End Shut-In(1)
78	82.15	119.37	Open To Flow (2)
124	130.32	123.48	Shut-In(2)
182	515.60	123.42	End Shut-In(2)
184	2130.02	124.15	Final Hydro-static

## Recovery

Length (ft)	Description	Volume (bbl)
190.00	gmco 70g 20o 10m	2.67
90.00	gmco 40g 50o 10m	1.26
0.00	1920' GIP	0.00

## Gas Rates

	Choke (inches)	Pressure (psig)	Gas Rate (Mcf/d)

\* Recovery from multiple tests



**TRILOBITE  
TESTING, INC.**

# DRILL STEM TEST REPORT

## FLUID SUMMARY

O'Brien Resources, LLC

2 17s 30w Lane, Ks

PO Box 6149  
Shreveport, LA 71136

Sharp Seep 2 #2

Job Ticket: 56376

DST#: 5

ATTN: Kurt Talbott

Test Start: 2014.02.16 @ 20:33:00

### Mud and Cushion Information

Mud Type: Gel Chem

Cushion Type:

Oil API:

0 deg API

Mud Weight: 9.00 lb/gal

Cushion Length:

ft

Water Salinity:

0 ppm

Viscosity: 45.00 sec/qt

Cushion Volume:

bbbl

Water Loss: 7.99 in<sup>3</sup>

Gas Cushion Type:

Resistivity: ohm.m

Gas Cushion Pressure:

psig

Salinity: 2400.00 ppm

Filter Cake: 1.00 inches

### Recovery Information

Recovery Table

Length ft	Description	Volume bbbl
190.00	gmco 70g 20o 10m	2.665
90.00	gmco 40g 50o 10m	1.262
0.00	1920' GIP	0.000

Total Length: 280.00 ft      Total Volume: 3.927 bbl

Num Fluid Samples: 0

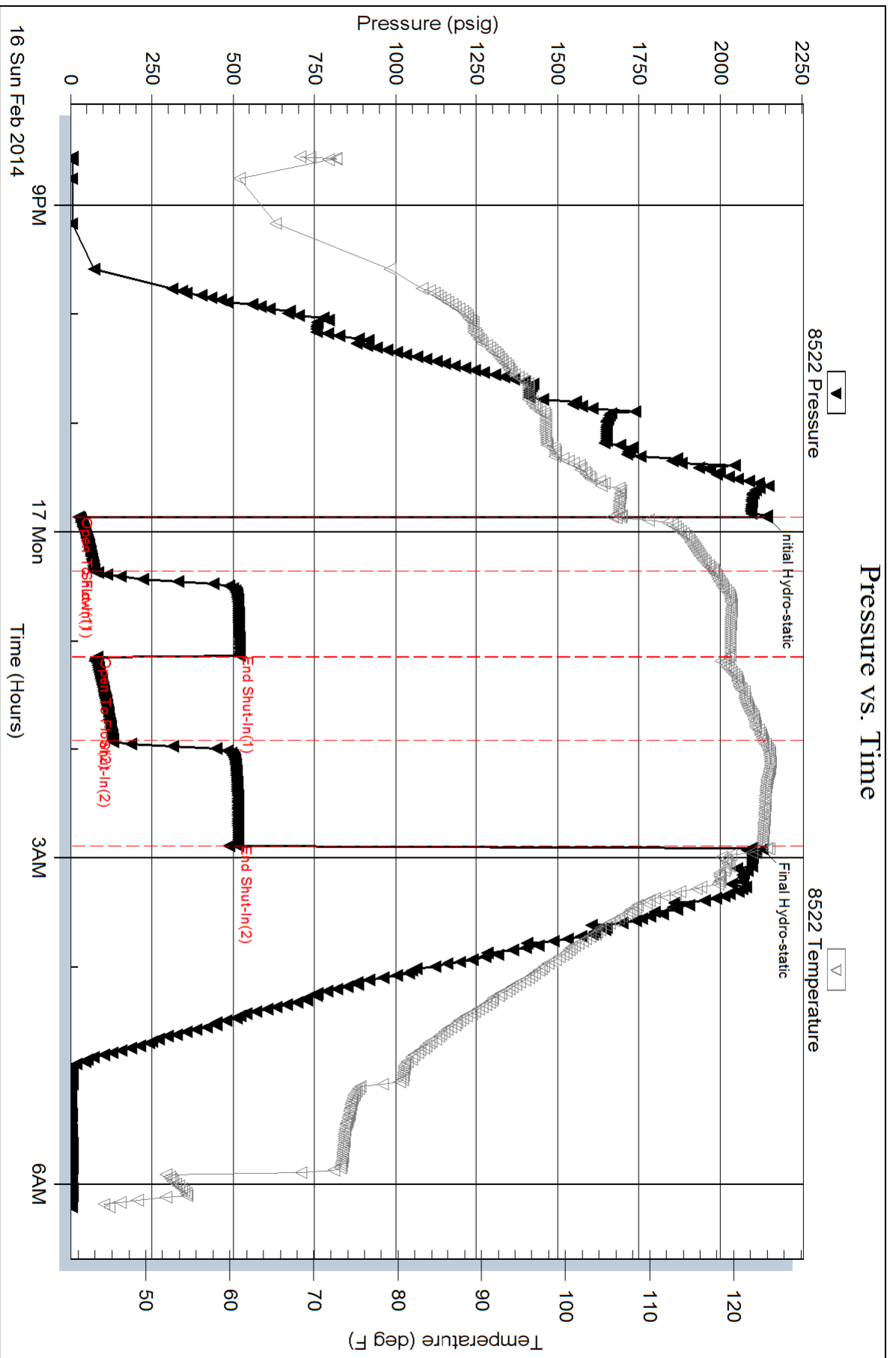
Num Gas Bombs: 0

Serial #:

Laboratory Name:

Laboratory Location:

Recovery Comments:





**TRILOBITE TESTING, INC.**

# DRILL STEM TEST REPORT

O'Brien Resources, LLC  
 PO Box 6149  
 Shreveport, LA 71136  
 ATTN: Kurt Talbott

**2 17s 30w Lane, Ks**  
**Sharp Seep 2 #2**  
 Job Ticket: 56377      **DST#: 6**  
 Test Start: 2014.02.17 @ 16:58:00

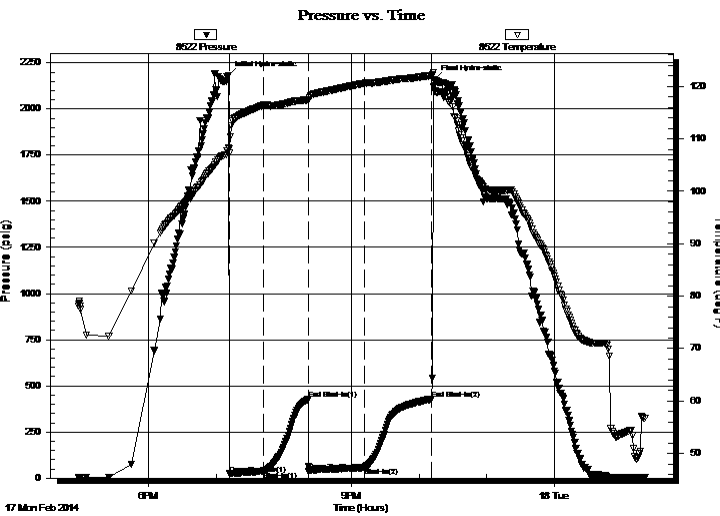
## GENERAL INFORMATION:

Formation: **Ft. Scott - Cherokee**  
 Deviated: No Whipstock: ft (KB)  
 Time Tool Opened: 19:11:30  
 Time Test Ended: 01:20:00  
 Interval: **4444.00 ft (KB) To 4490.00 ft (KB) (TVD)**  
 Total Depth: 4490.00 ft (KB) (TVD)  
 Hole Diameter: 7.88 inches Hole Condition: Good  
 Test Type: Conventional Bottom Hole (Reset)  
 Tester: Bradley Walter  
 Unit No: 69  
 Reference Elevations: 2857.00 ft (KB)  
 2850.00 ft (CF)  
 KB to GR/CF: 7.00 ft

## Serial #: 8522 Outside

Press @ Run Depth: 56.93 psig @ 4445.00 ft (KB) Capacity: 8000.00 psig  
 Start Date: 2014.02.17 End Date: 2014.02.18 Last Calib.: 2014.02.18  
 Start Time: 16:58:05 End Time: 01:19:59 Time On Btm: 2014.02.17 @ 19:11:00  
 Time Off Btm: 2014.02.17 @ 22:13:15

TEST COMMENT: IF: BOB @ 14 min.  
 IS: No return.  
 FF: BOB @ 4 min.  
 FS: No return.



## PRESSURE SUMMARY

Time (Min.)	Pressure (psig)	Temp (deg F)	Annotation
0	2181.19	108.34	Initial Hydro-static
1	22.89	107.28	Open To Flow (1)
32	37.33	116.45	Shut-In(1)
71	427.90	117.47	End Shut-In(1)
71	38.45	117.50	Open To Flow (2)
121	56.93	120.58	Shut-In(2)
180	427.04	122.04	End Shut-In(2)
183	2157.90	120.15	Final Hydro-static

## Recovery

Length (ft)	Description	Volume (bbl)
90.00	gocm 20g 25o 45m	1.26
0.00	630' GIP	0.00

\* Recovery from multiple tests

## Gas Rates

Choke (inches)	Pressure (psig)	Gas Rate (Mcf/d)





**TRILOBITE  
TESTING, INC.**

# DRILL STEM TEST REPORT

**FLUID SUMMARY**

O'Brien Resources, LLC

**2 17s 30w Lane, Ks**

PO Box 6149  
Shreveport, LA 71136

**Sharp Seep 2 #2**

Job Ticket: 56377

**DST#: 6**

ATTN: Kurt Talbott

Test Start: 2014.02.17 @ 16:58:00

## Mud and Cushion Information

Mud Type: Gel Chem

Cushion Type:

Oil API:

0 deg API

Mud Weight: 9.00 lb/gal

Cushion Length:

ft

Water Salinity:

0 ppm

Viscosity: 52.00 sec/qt

Cushion Volume:

bbbl

Water Loss: 7.20 in<sup>3</sup>

Gas Cushion Type:

Resistivity: ohm.m

Gas Cushion Pressure:

psig

Salinity: 2400.00 ppm

Filter Cake: 1.00 inches

## Recovery Information

Recovery Table

Length ft	Description	Volume bbl
90.00	gocm 20g 25o 45m	1.262
0.00	630' GIP	0.000

Total Length: 90.00 ft      Total Volume: 1.262 bbl

Num Fluid Samples: 0

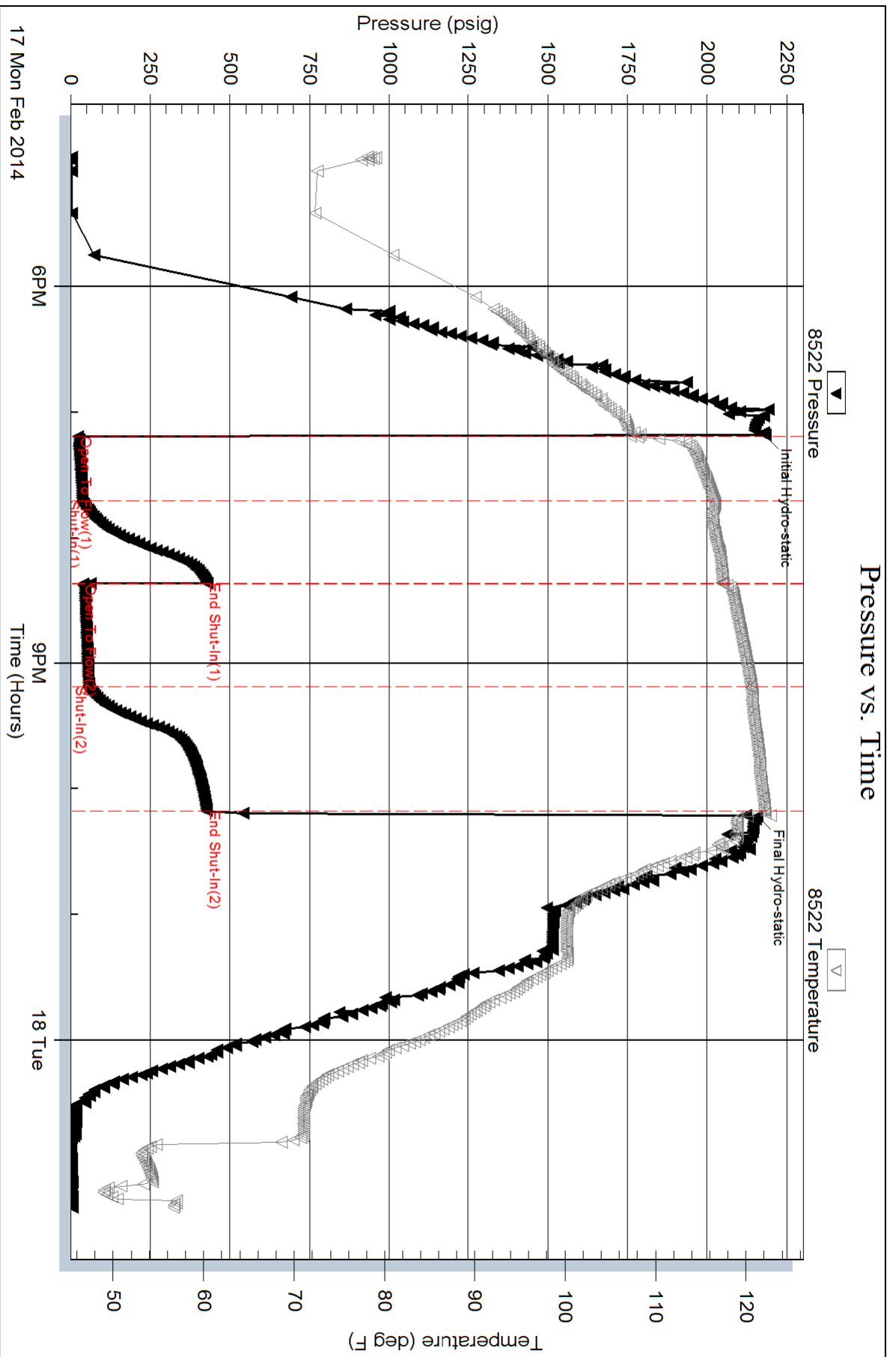
Num Gas Bombs: 0

Serial #:

Laboratory Name:

Laboratory Location:

Recovery Comments:





**TRILOBITE  
TESTING, INC.**

# DRILL STEM TEST REPORT

O'Brien Resources, LLC

2 17s 30w Lane, Ks

PO Box 6149  
Shreveport, LA 71136

**Sharp Seep 2 #2**

Job Ticket: 56378

**DST#: 7**

ATTN: Kurt Talbott

Test Start: 2014.02.18 @ 12:22:00

## GENERAL INFORMATION:

Formation: **Johnson**

Deviated: No Whipstock: ft (KB)

Time Tool Opened: 14:45:00

Time Test Ended: 21:36:30

Test Type: Conventional Bottom Hole (Reset)

Tester: Bradley Walter

Unit No: 69

**Interval: 4496.00 ft (KB) To 4530.00 ft (KB) (TVD)**

Reference Elevations: 2857.00 ft (KB)

Total Depth: 4530.00 ft (KB) (TVD)

2850.00 ft (CF)

Hole Diameter: 7.88 inches Hole Condition: Good

KB to GR/CF: 7.00 ft

**Serial #: 8522 Outside**

Press @ Run Depth: 34.02 psig @ 4497.00 ft (KB)

Capacity: 8000.00 psig

Start Date: 2014.02.18

End Date: 2014.02.18

Last Calib.: 2014.02.18

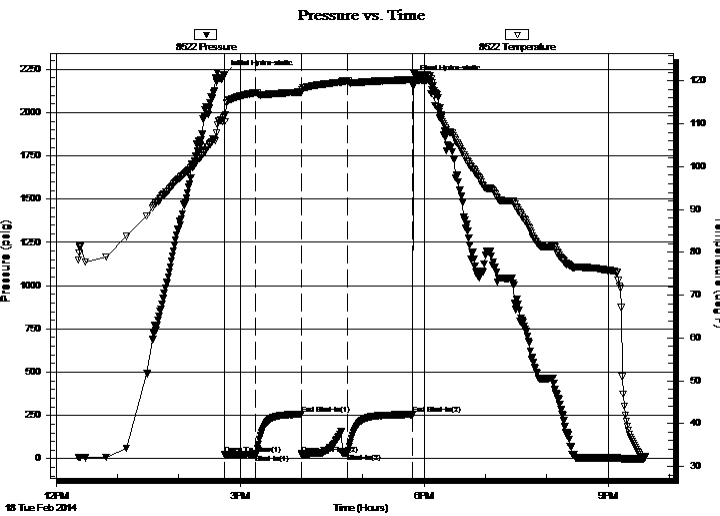
Start Time: 12:22:05

End Time: 21:36:30

Time On Btm: 2014.02.18 @ 14:44:45

Time Off Btm: 2014.02.18 @ 17:50:00

**TEST COMMENT:** IF: BOB @ 7 min.  
IS: No return.  
FF: BOB @ 10 sec.  
FS: No return.



## PRESSURE SUMMARY

Time (Min.)	Pressure (psig)	Temp (deg F)	Annotation
0	2217.24	111.70	Initial Hydro-static
1	26.05	110.53	Open To Flow (1)
31	26.98	117.27	Shut-In(1)
75	257.61	117.39	End Shut-In(1)
76	24.50	117.28	Open To Flow (2)
120	34.02	120.06	Shut-In(2)
185	254.73	120.28	End Shut-In(2)
186	2192.31	122.00	Final Hydro-static

## Recovery

Length (ft)	Description	Volume (bbl)
45.00	ocm 30o 70m	0.63
0.00	3200' GIP	0.00

\* Recovery from multiple tests

## Gas Rates

Choke (inches)	Pressure (psig)	Gas Rate (Mcf/d)



**TRILOBITE  
TESTING, INC.**

# DRILL STEM TEST REPORT

O'Brien Resources, LLC

2 17s 30w Lane, Ks

PO Box 6149  
Shreveport, LA 71136

**Sharp Seep 2 #2**

Job Ticket: 56378

**DST#: 7**

ATTN: Kurt Talbott

Test Start: 2014.02.18 @ 12:22:00

## GENERAL INFORMATION:

Formation: **Johnson**

Deviated: No Whipstock: ft (KB)

Time Tool Opened: 14:45:00

Time Test Ended: 21:36:30

Test Type: Conventional Bottom Hole (Reset)

Tester: Bradley Walter

Unit No: 69

**Interval: 4496.00 ft (KB) To 4530.00 ft (KB) (TVD)**

Total Depth: 4530.00 ft (KB) (TVD)

Hole Diameter: 7.88 inches Hole Condition: Good

Reference Elevations: 2857.00 ft (KB)

2850.00 ft (CF)

KB to GR/CF: 7.00 ft

**Serial #: 8678 Inside**

Press @ Run Depth: psig @ 4497.00 ft (KB)

Start Date: 2014.02.18

End Date: 2014.02.18

Capacity: 8000.00 psig

Last Calib.: 2014.02.18

Start Time: 12:22:05

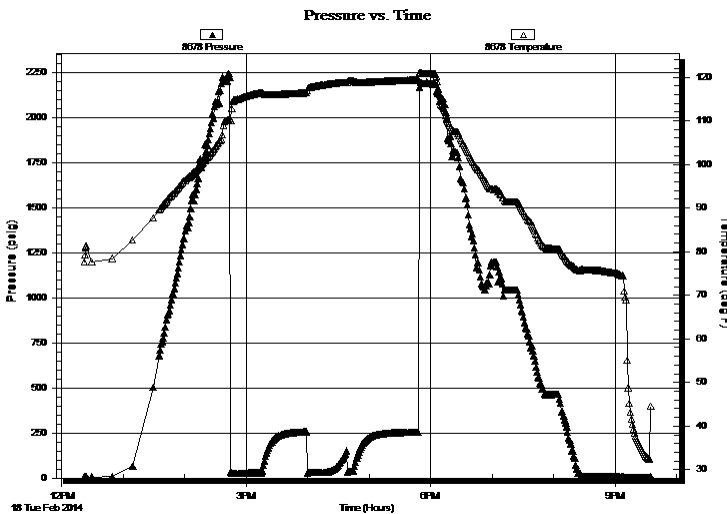
End Time: 21:35:00

Time On Btm:

Time Off Btm:

**TEST COMMENT:** IF: BOB @ 7 min.  
IS: No return.  
FF: BOB @ 10 sec.  
FS: No return.

## PRESSURE SUMMARY



Time (Min.)	Pressure (psig)	Temp (deg F)	Annotation

## Recovery

Length (ft)	Description	Volume (bbl)
45.00	ocm 30o 70m	0.63
0.00	3200' GIP	0.00

## Gas Rates

	Choke (inches)	Pressure (psig)	Gas Rate (Mcf/d)

\* Recovery from multiple tests



**TRILOBITE  
TESTING, INC.**

# DRILL STEM TEST REPORT

**FLUID SUMMARY**

O'Brien Resources, LLC

**2 17s 30w Lane, Ks**

PO Box 6149  
Shreveport, LA 71136

**Sharp Seep 2 #2**

Job Ticket: 56378

**DST#: 7**

ATTN: Kurt Talbott

Test Start: 2014.02.18 @ 12:22:00

## Mud and Cushion Information

Mud Type: Gel Chem

Cushion Type:

Oil API:

0 deg API

Mud Weight: 9.00 lb/gal

Cushion Length:

ft

Water Salinity:

0 ppm

Viscosity: 52.00 sec/qt

Cushion Volume:

bbbl

Water Loss: 7.20 in<sup>3</sup>

Gas Cushion Type:

Resistivity: ohm.m

Gas Cushion Pressure:

psig

Salinity: 2400.00 ppm

Filter Cake: 1.00 inches

## Recovery Information

Recovery Table

Length ft	Description	Volume bbbl
45.00	ocm 30o 70m	0.631
0.00	3200' GIP	0.000

Total Length: 45.00 ft      Total Volume: 0.631 bbl

Num Fluid Samples: 0

Num Gas Bombs: 0

Serial #:

Laboratory Name:

Laboratory Location:

Recovery Comments:

