



## DRILL STEM TEST REPORT

Prepared For: **Kirby Krier Oil Inc.**

1043 North East 80th Road  
Clafin ,Kansas 67525-9159

ATTN: clinto Musgrove

### **Jay Cat #1**

**123**

Start Date: 2014.03.20 @ 08:00:00

End Date: 2014.03.20 @ 14:58:30

Job Ticket #: 19230                      DST #: 2

Superior Testers Enterprises LLC  
PO Box 138 Great Bend KS 67530  
1-800-792-6902

Printed: 2014.03.20 @ 05:25:10

Kirby Krier Oil Inc. 123 Jay Cat #1 DST # 2 Arbuckle 2014.03.20



# DRILL STEM TEST REPORT

Kirby Krier Oil Inc.  
 1043 North East 80th Road  
 Claflin ,Kansas 67525-9159  
 ATTN: clinto Musgrove

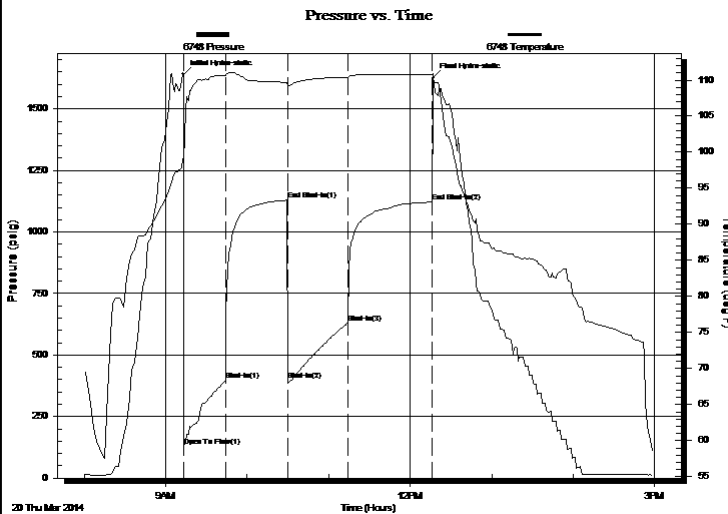
**123**  
**Jay Cat #1**  
 Job Ticket: 19230 **DST#: 2**  
 Test Start: 2014.03.20 @ 08:00:00

## GENERAL INFORMATION:

Formation: **Arbuckle**  
 Deviated: No Whipstock: ft (KB)  
 Time Tool Opened: 09:13:30  
 Time Test Ended: 14:58:30  
 Interval: **3180.00 ft (KB) To 3242.00 ft (KB) (TVD)**  
 Total Depth: 3242.00 ft (KB) (TVD)  
 Hole Diameter: 7.78 inches Hole Condition: Poor  
 Test Type: Conventional Bottom Hole (Initial)  
 Tester: Gene Budig  
 Unit No: 3335  
 Reference Elevations: 1767.00 ft (KB)  
 1760.00 ft (CF)  
 KB to GR/CF: 7.00 ft

**Serial #: 6748 Outside**  
 Press@RunDepth: 397.48 psig @ 3238.67 ft (KB) Capacity: 5000.00 psig  
 Start Date: 2014.03.20 End Date: 2014.03.20 Last Calib.: 2014.03.20  
 Start Time: 08:00:00 End Time: 14:58:30 Time On Btm: 2014.03.20 @ 09:13:00  
 Time Off Btm: 2014.03.20 @ 12:17:00

**TEST COMMENT:** 1st Opening 30 Minutes Good blow built to the bottom of a 5 gallon bucket in 2 minutes  
 1st Shut-In 45 Minutes-No blow back  
 2nd Opening 45 Minutes-Good blow built to the bottom of a 5 Gallon bucket in 3 minutes  
 2nd Shut-In 60 Minutes-No blow back



## PRESSURE SUMMARY

Time (Min.)	Pressure (psig)	Temp (deg F)	Annotation
0	1640.87	99.22	Initial Hydro-static
1	128.01	98.87	Open To Flow (1)
31	397.48	110.63	Shut-In(1)
77	1129.29	109.66	End Shut-In(1)
77	397.43	109.37	Shut-In(2)
121	630.60	110.41	Shut-In(3)
183	1121.59	110.71	End Shut-In(2)
184	1625.29	110.27	Final Hydro-static

## Recovery

Length (ft)	Description	Volume (bbl)
0.00	60 Gas in the pipe	0.00
1330.00	Clean Gassy Oil Gravity 42 Corrected	18.66
90.00	Muddy Oil 5%Gas 60%Oil 35%Mud	1.26
60.00	Muddy Gassy Oil	0.84
0.00	20%Gas 60%Oil 20%Mud	0.00
60.00	Gassy Mud Cut Oil	0.84

## Gas Rates

	Choke (inches)	Pressure (psig)	Gas Rate (Mcf/d)



# DRILL STEM TEST REPORT

Kirby Krier Oil Inc.  
 1043 North East 80th Road  
 Claflin ,Kansas 67525-9159  
 ATTN: clinto Musgrove

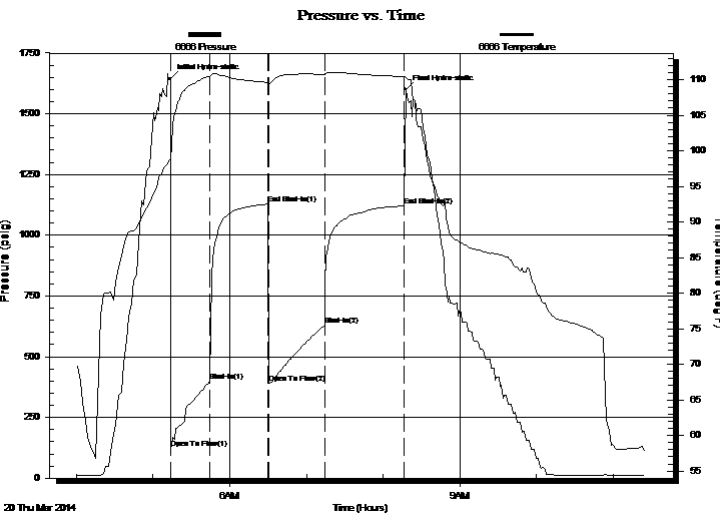
**123**  
**Jay Cat #1**  
 Job Ticket: 19230 **DST#: 2**  
 Test Start: 2014.03.20 @ 08:00:00

## GENERAL INFORMATION:

Formation: **Arbuckle**  
 Deviated: No Whipstock: ft (KB)  
 Time Tool Opened: 09:13:30  
 Time Test Ended: 14:58:30  
 Test Type: Conventional Bottom Hole (Initial)  
 Tester: Gene Budig  
 Unit No: 3335  
 Interval: **3180.00 ft (KB) To 3242.00 ft (KB) (TVD)**  
 Reference Elevations: 1767.00 ft (KB)  
 Total Depth: 3242.00 ft (KB) (TVD)  
 1760.00 ft (CF)  
 Hole Diameter: 7.78 inches Hole Condition: Poor  
 KB to GR/CF: 7.00 ft

**Serial #: 6666 Inside**  
 Press@RunDepth: 1120.30 psig @ 3237.67 ft (KB) Capacity: 5000.00 psig  
 Start Date: 2014.03.20 End Date: 2014.03.20 Last Calib.: 2014.03.20  
 Start Time: 04:00:00 End Time: 11:24:30 Time On Btm: 2014.03.20 @ 05:13:30  
 Time Off Btm: 2014.03.20 @ 08:17:30

**TEST COMMENT:** 1st Opening 30 Minutes Good blow built to the bottom of a 5 gallon bucket in 2 minutes  
 1st Shut-In 45 Minutes-No blow back  
 2nd Opening 45 Minutes-Good blow built to the bottom of a 5 Gallon bucket in 3 minutes  
 2nd Shut-In 60 Minutes-No blow back



## PRESSURE SUMMARY

Time (Min.)	Pressure (psig)	Temp (deg F)	Annotation
0	1644.09	98.67	Initial Hydro-static
1	121.16	98.91	Open To Flow (1)
31	399.18	110.47	Shut-In(1)
76	1127.73	109.60	End Shut-In(1)
77	389.44	109.33	Open To Flow (2)
121	628.51	110.76	Shut-In(2)
183	1120.30	110.41	End Shut-In(2)
184	1600.59	110.25	Final Hydro-static

## Recovery

Length (ft)	Description	Volume (bbl)
0.00	60 Gas in the pipe	0.00
1330.00	Clean Gassy Oil Gravity 42 Corrected	18.66
90.00	Muddy Oil 5%Gas 60%Oil 35%Mud	1.26
60.00	Muddy Gassy Oil	0.84
0.00	20%Gas 60%Oil 20%Mud	0.00
60.00	Gassy Mud Cut Oil	0.84

## Gas Rates

	Choke (inches)	Pressure (psig)	Gas Rate (Mcf/d)



# DRILL STEM TEST REPORT

**TOOL DIAGRAM**

Kirby Krier Oil Inc.  
 1043 North East 80th Road  
 Claflin ,Kansas 67525-9159  
 ATTN: clinto Musgrove

**123**  
**Jay Cat #1**  
 Job Ticket: 19230      **DST#: 2**  
 Test Start: 2014.03.20 @ 08:00:00

**Tool Information**

Drill Pipe:	Length: 3190.00 ft	Diameter: 3.80 inches	Volume: 44.75 bbl	Tool Weight:	2000.00 lb
Heavy Wt. Pipe:	Length: 0.00 ft	Diameter: 0.00 inches	Volume: 0.00 bbl	Weight set on Packer:	20000.00 lb
Drill Collar:	Length: 0.00 ft	Diameter: 0.00 inches	Volume: 0.00 bbl	Weight to Pull Loose:	62000.00 lb
			<u>Total Volume: 44.75 bbl</u>	Tool Chased	0.00 ft
Drill Pipe Above KB:	30.00 ft			String Weight: Initial	44000.00 lb
Depth to Top Packer:	3180.00 ft			Final	51000.00 lb
Depth to Bottom Packer:	ft				
Interval between Packers:	61.67 ft				
Tool Length:	81.67 ft				
Number of Packers:	2	Diameter: 6.75 inches			

Tool Comments:

Tool Description	Length (ft)	Serial No.	Position	Depth (ft)	Accum. Lengths
Shut-In Tool	5.00			3165.00	
Hydraulic Tool	5.00			3170.00	
Top Packer	5.00			3175.00	
Packer	5.00			3180.00	20.00      Bottom Of Top Packer
Anchor	5.00			3185.00	
Change Over Sub	0.75			3185.75	
Drill Pipe	31.17			3216.92	
Change Over Sub	0.75			3217.67	
Anchor	19.00			3236.67	
Recorder	1.00	6666	Inside	3237.67	
Recorder	1.00	6748	Outside	3238.67	
Bull Plug	3.00			3241.67	61.67      Anchor Tool

**Total Tool Length: 81.67**



# DRILL STEM TEST REPORT

## FLUID SUMMARY

Kirby Krier Oil Inc.

123

1043 North East 80th Road  
Clafin , Kansas 67525-9159

Jay Cat #1

Job Ticket: 19230

DST#: 2

ATTN: clinto Musgrove

Test Start: 2014.03.20 @ 08:00:00

### Mud and Cushion Information

Mud Type: Gel Chem  
Mud Weight: 9.00 lb/gal  
Viscosity: 58.00 sec/qt  
Water Loss: 8.20 in<sup>3</sup>  
Resistivity: ohm.m  
Salinity: 5000.00 ppm  
Filter Cake: 1.00 inches

Cushion Type:  
Cushion Length: ft  
Cushion Volume: bbl  
Gas Cushion Type:  
Gas Cushion Pressure: psig

Oil API: deg API  
Water Salinity: ppm

### Recovery Information

Recovery Table

Length ft	Description	Volume bbl
0.00	60 Gas in the pipe	0.000
1330.00	Clean Gassy Oil Gravity 42 Corrected	18.656
90.00	Muddy Oil 5%Gas 60%Oil 35%Mud	1.262
60.00	Muddy Gassy Oil	0.842
0.00	20%Gas 60%Oil 20%Mud	0.000
60.00	Gassy Mud Cut Oil	0.842
0.00	15%Gas 55%Oil 30%Mud	0.000
60.00	Oil And Gas Cut Mud	0.842
0.00	20%Gas 30%Oil 50%Mud	0.000
60.00	Mud Cut Gassy Oil	0.842
0.00	25%Gas 35%Oil 35%Mud 5%Water	0.000

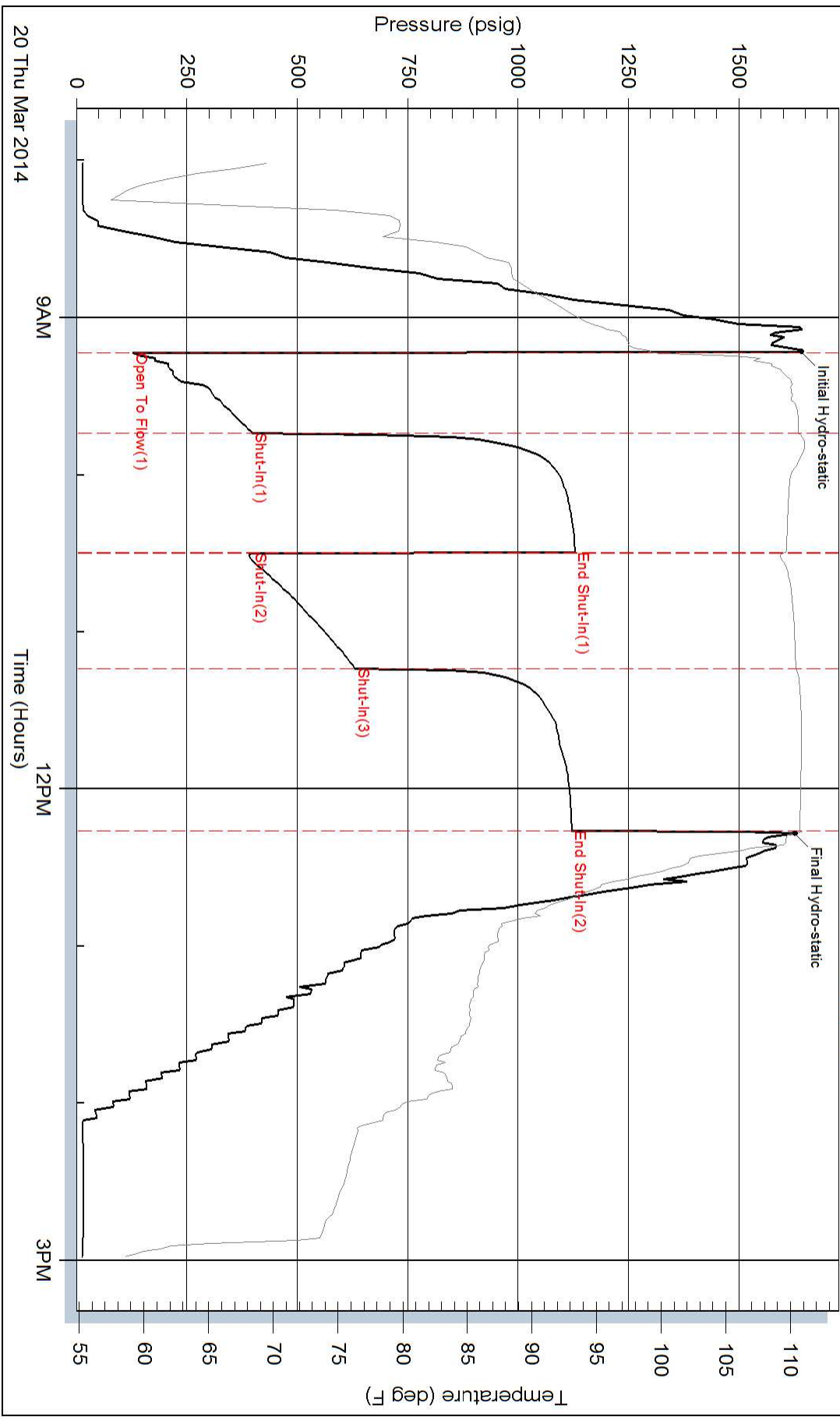
Total Length: 1660.00 ft      Total Volume: 23.286 bbl

Num Fluid Samples: 0      Num Gas Bombs: 0      Serial #:

Laboratory Name:      Laboratory Location:

Recovery Comments:

### Pressure vs. Time



### Pressure vs. Time

