



DRILL STEM TEST REPORT

Prepared For: **Castle Resources Inc.**

Box 87
Schoenchen KS 67667

ATTN: Jerry Green

Hachmeister #1

6-11S-15W Russell,KS

Start Date: 2014.03.10 @ 15:10:00

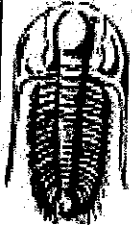
End Date: 2014.03.10 @ 21:19:30

Job Ticket #: 56910 DST #: 1

Trilobite Testing, Inc
PO Box 362 Hays, KS 67601
ph: 785-625-4778 fax: 785-625-5620

Printed: 2014.03.19 @ 17:35:43

Castle Resources Inc. 6-11S-15W Russell,KS Hachmeister #1 DST # 1 Toronto - LKC C 2014.03.10



TRILOBITE TESTING, INC.

DRILL STEM TEST REPORT

Castle Resources Inc.
 Box 87
 Schoenchen KS 67667
 ATTN: Jerry Green

6-11S-15W Russell,KS
Hachmeister #1
 Job Ticket: 56910 DST#: 1
 Test Start: 2014.03.10 @ 15:10:00

GENERAL INFORMATION:

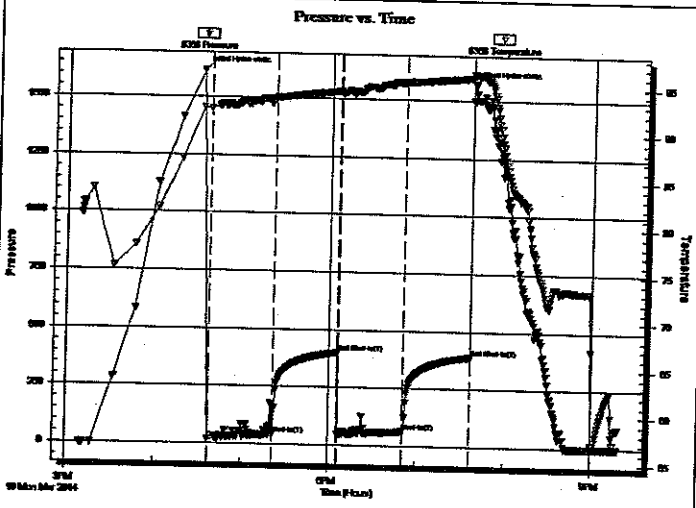
Formation: **Toronto - LKC C**
 Deviated: No Whipstock: ft (KB)
 Time Tool Opened: 16:37:00
 Time Test Ended: 21:19:30
 Interval: **3230.00 ft (KB) To 3325.00 ft (KB) (TVD)**
 Total Depth: 3325.00 ft (KB) (TVD)
 Hole Diameter: 7.88 inches Hole Condition: Good
 Test Type: Conventional Bottom Hole (Initial)
 Tester: Royal Fisher
 Unit No: #54
 Reference Elevations: 2049.00 ft (KB)
 2044.00 ft (CF)
 KB to GR/CF: 5.00 ft

Serial #: 8368

Inside

Press@RunDepth: 62.19 psig @ 3231.00 ft (KB) Capacity: 8000.00 psig
 Start Date: 2014.03.10 End Date: 2014.03.10 Last Calib.: 2014.03.10
 Start Time: 15:10:05 End Time: 21:19:29 Time On Btm: 2014.03.10 @ 16:32:00
 Time Off Btm: 2014.03.10 @ 19:38:15

TEST COMMENT: 45 - IF - Surface blow built up to 1 1/4" slowly
 45 - ISI - No Return
 45 - FF - Weak Surface started after 4 mins. and built to 1 1/4"
 45 - FSI - No Return



PRESSURE SUMMARY

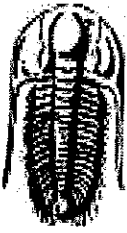
Time (Min.)	Pressure (psig)	Temp (deg F)	Annotation
0	1613.99	92.51	Initial Hydro-static
5	17.37	92.39	Open To Flow (1)
50	40.48	93.61	Shut-In(1)
94	401.09	94.42	End Shut-In(1)
95	43.57	94.28	Open To Flow (2)
139	62.19	95.41	Shut-In(2)
185	388.04	96.01	End Shut-In(2)
187	1568.26	96.31	Final Hydro-static

Recovery

Length (ft)	Description	Volume (bbl)
103.00	Mud - 100M	1.44

Gas Rates

	Choke (inches)	Pressure (psig)	Gas Rate (Mcf/d)



TRILOBITE TESTING, INC

DRILL STEM TEST REPORT

Castle Resources Inc.

6-11S-15W Russell,KS

Box 87
Schoenchen KS 67667

Hachmeister #1

Job Ticket: 56910 DST#: 1

ATTN: Jerry Green

Test Start: 2014.03.10 @ 15:10:00

GENERAL INFORMATION:

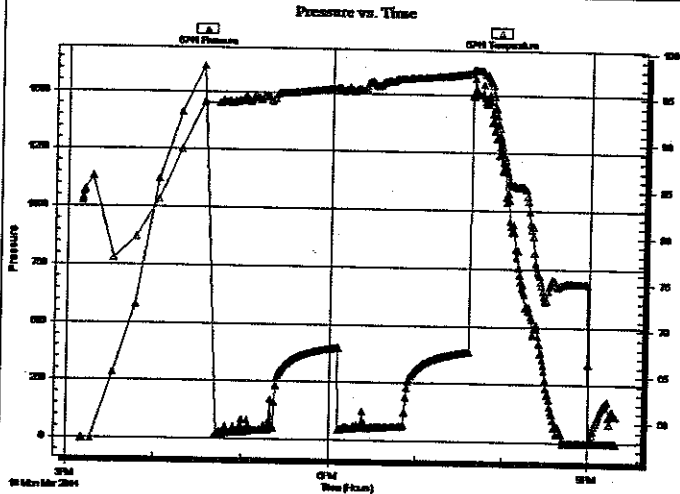
Formation: **Toronto - LKC C**
 Deviated: No Whipstock: ft (KB)
 Time Tool Opened: 16:37:00
 Time Test Ended: 21:19:30
 Interval: **3230.00 ft (KB) To 3325.00 ft (KB) (TVD)**
 Total Depth: 3325.00 ft (KB) (TVD)
 Hole Diameter: 7.88 inches
 Hole Condition: Good

Test Type: Conventional Bottom Hole (Initial)
 Tester: Royal Fisher
 Unit No: #54
 Reference Elevations: 2049.00 ft (KB)
 2044.00 ft (CF)
 KB to GR/CF: 5.00 ft

Serial #: 6741 Inside

Press@RunDepth: psig @ 3231.00 ft (KB)
 Capacity: 8000.00 psig
 Start Date: 2014.03.10 End Date: 2014.03.10 Last Calib.: 2014.03.10
 Start Time: 15:10:05 End Time: 21:19:29
 Time On Btm:
 Time Off Btm:

TEST COMMENT: 45 - IF - Surface blow built up to 1 1/4" slowly
 45 - ISI - No Return
 45 - FF - Weak Surface started after 4 mins. and built to 1 1/4"
 45 - FSI - No Return



PRESSURE SUMMARY

Time (Min.)	Pressure (psig)	Temp (deg F)	Annotation

Recovery

Length (ft)	Description	Volume (bbl)
103.00	Mud - 100M	1.44

Gas Rates

Choke (inches)	Pressure (psig)	Gas Rate (Mcf/d)



**TRILOBITE
TESTING, INC.**

DRILL STEM TEST REPORT

TOOL DIAGRAM

Castle Resources Inc.

6-11S-15W Russell,KS

Box 87
Schoenchen KS 67667

Hachmeister #1

Job Ticket: 56910

DST#: 1

ATTN: Jerry Green

Test Start: 2014.03.10 @ 15:10:00

Tool Information

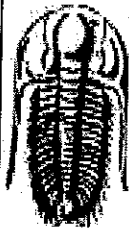
Drill Pipe:	Length: 3233.00 ft	Diameter: 3.80 inches	Volume: 45.35 bbl	Tool Weight: 2500.00 lb
Heavy Wt. Pipe:	Length: 0.00 ft	Diameter: 0.00 inches	Volume: 0.00 bbl	Weight set on Packer: 25000.00 lb
Drill Collar:	Length: 0.00 ft	Diameter: 2.25 inches	Volume: 0.00 bbl	Weight to Pull Loose: 46000.00 lb
		Total Volume:	45.35 bbl	Tool Chased: 0.00 ft
Drill Pipe Above KB:	22.00 ft			String Weight: Initial 36000.00 lb
Depth to Top Packer:	3230.00 ft			Final 36000.00 lb
Depth to Bottom Packer:	ft			
Interval between Packers:	95.00 ft			
Tool Length:	114.00 ft			
Number of Packers:	2	Diameter: 6.75 inches		

Tool Comments:

Tool Description

Tool Description	Length (ft)	Serial No.	Position	Depth (ft)	Accum. Lengths
Shut In Tool	5.00			3216.00	
Hydraulic tool	5.00			3221.00	
Packer	4.00			3225.00	19.00
Packer	5.00			3230.00	Bottom Of Top Packer
Stubb	1.00			3231.00	
Recorder	0.00	6741	inside	3231.00	
Recorder	0.00	8368	inside	3231.00	
Perforations	25.00			3256.00	
Change Over Sub	1.00			3257.00	
Drill Pipe	63.00			3320.00	
Change Over Sub	1.00			3321.00	
Bullnose	4.00			3325.00	95.00
					Bottom Packers & Anchor

Total Tool Length: 114.00



**TRILOBITE
TESTING, INC**

DRILL STEM TEST REPORT

FLUID SUMMARY

Castle Resources Inc.

6-11S-15W Russell, KS

Box 87
Schoenchen KS 67667

Hachmeister #1

Job Ticket: 56910

DST#: 1

ATTN: Jerry Green

Test Start: 2014.03.10 @ 15:10:00

Mud and Cushion Information

Mud Type: Gel Chem

Mud Weight: 9.00 lb/gal

Viscosity: 56.00 sec/qt

Water Loss: 10.18 in³

Resistivity: 0.00 ohm.m

Salinity: 6000.00 ppm

Filter Cake: 1.00 inches

Cushion Type:

Cushion Length: ft

Cushion Volume: bbl

Gas Cushion Type:

Gas Cushion Pressure: psig

Oil API: deg API

Water Salinity: ppm

Recovery Information

Recovery Table

Length ft	Description	Volume bbl
103.00	Mud - 100M	1.445

Total Length: 103.00 ft Total Volume: 1.445 bbl

Num Fluid Samples: 0 Num Gas Bombs: 0 Serial #:

Laboratory Name: Laboratory Location:

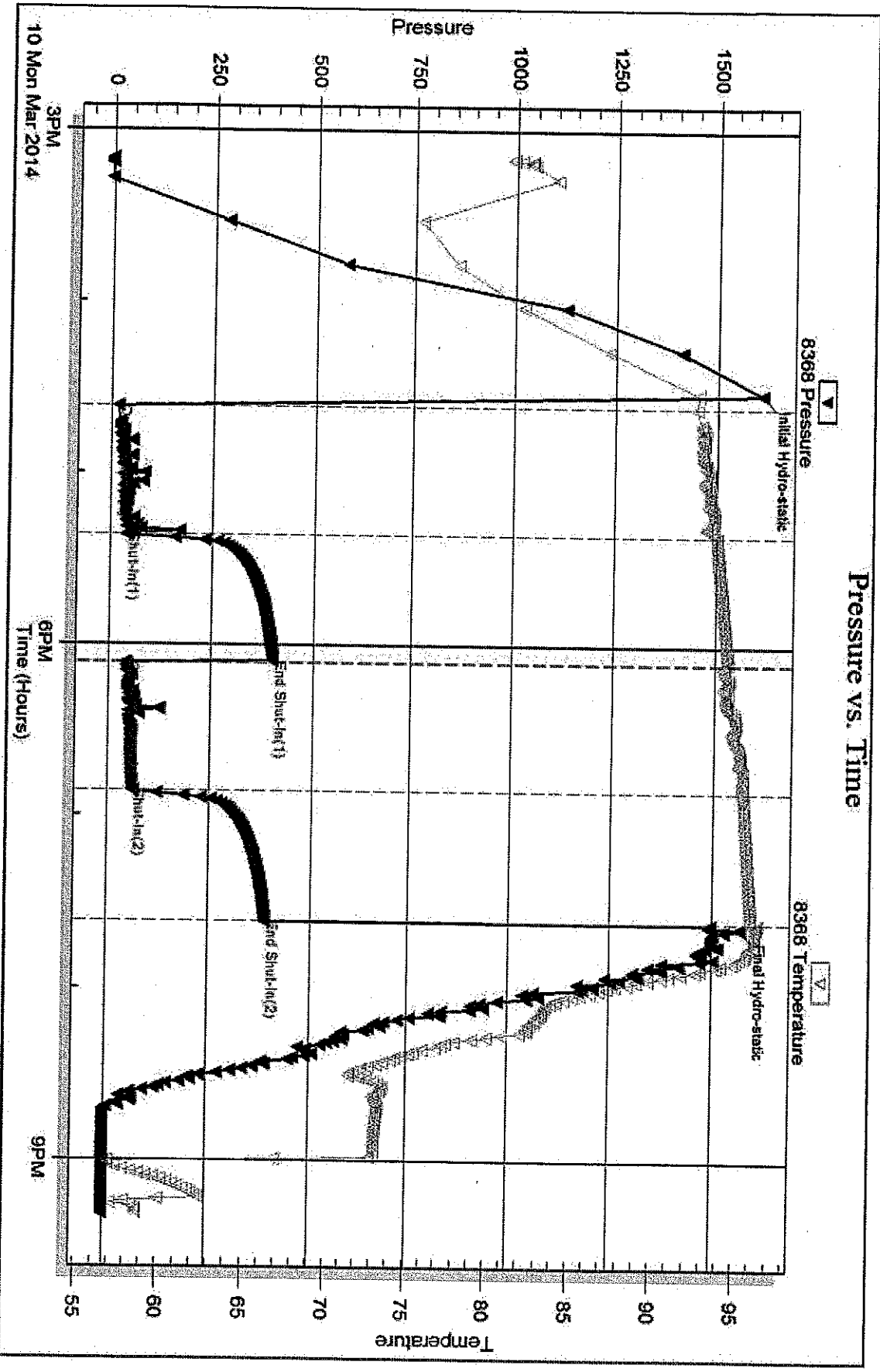
Recovery Comments:

Serial #: 8368

Inside Castle Resources Inc.

Hachimeter #1

DST Test Number: 1



Tribble Testing, Inc

Ref. No: 56910

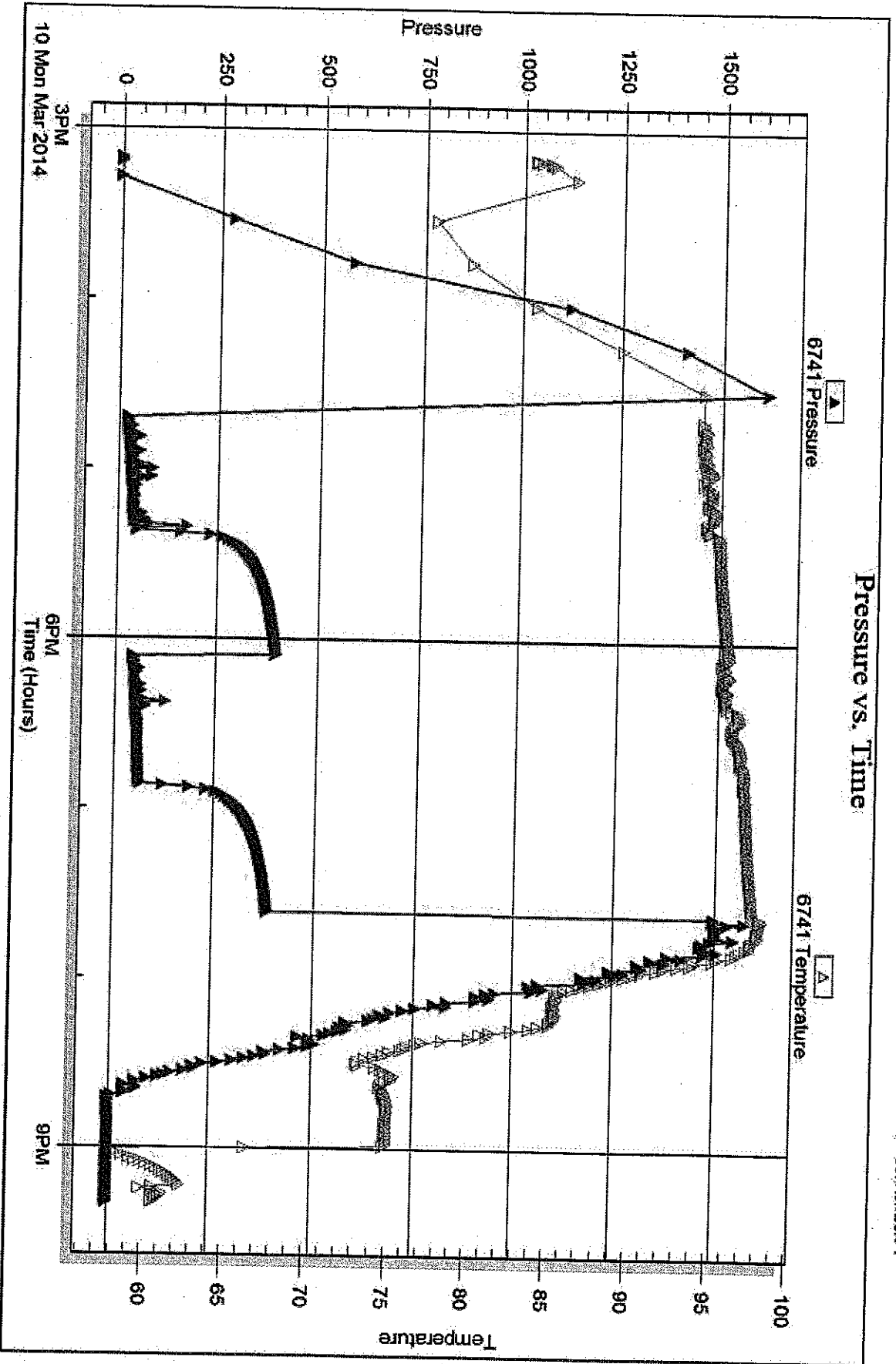
Printed: 2014.03.19 @ 17:35:45

Serial #: 6741

Inside Castle Resources Inc.

Hachmeister #1

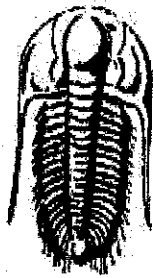
DST Test Number: 1



Tribolite Testing, Inc

Ref. No: 56910

Printed: 2014.03.19 @ 17:35:45



**TRILOBITE
TESTING, INC.**

DRILL STEM TEST REPORT

Prepared For: **Castle Resources Inc.**

Box 87
Schoenchen KS 67667

ATTN: Jerry Green

Hachmeister #1

6-11S-15W Russell,KS

Start Date: 2014.03.12 @ 00:52:00

End Date: 2014.03.12 @ 11:03:00

Job Ticket #: 56911 DST #: 2

Trilobite Testing, Inc

PO Box 362 Hays, KS 67601

ph: 785-625-4778 fax: 785-625-5620

Printed: 2014.03.19 @ 17:35:13

Castle Resources Inc.

6-11S-15W Russell,KS

Hachmeister #1

DST # 2

LKC E - I

2014.03.12



TRILOBITE TESTING, INC

DRILL STEM TEST REPORT

Castle Resources Inc.

6-11S-15W Russell, KS

Box 87
Schoenchen KS 67667

Hachmeister #1

Job Ticket: 56911 DST#: 2

ATTN: Jerry Green

Test Start: 2014.03.12 @ 00:52:00

GENERAL INFORMATION:

Formation: **LKC E - I**
 Deviated: No Whipstock: ft (KB)
 Time Tool Opened: 05:13:00
 Time Test Ended: 11:03:00
 Interval: **3340.00 ft (KB) To 3464.00 ft (KB) (TVD)**
 Total Depth: 3725.00 ft (KB) (TVD)
 Hole Diameter: 7.88 inches Hole Condition: Good

Test Type: Conventional Straddle (Initial)
 Tester: Royal Fisher
 Unit No: #54
 Reference Elevations: 2049.00 ft (KB)
 2044.00 ft (CF)
 KB to GR/CF: 5.00 ft

Serial #: 8368

Inside

Press@RunDepth: 289.87 psig @ 3341.00 ft (KB)

Start Date: 2014.03.12

End Date:

2014.03.12

Capacity: 8000.00 psig

Start Time: 00:52:05

End Time:

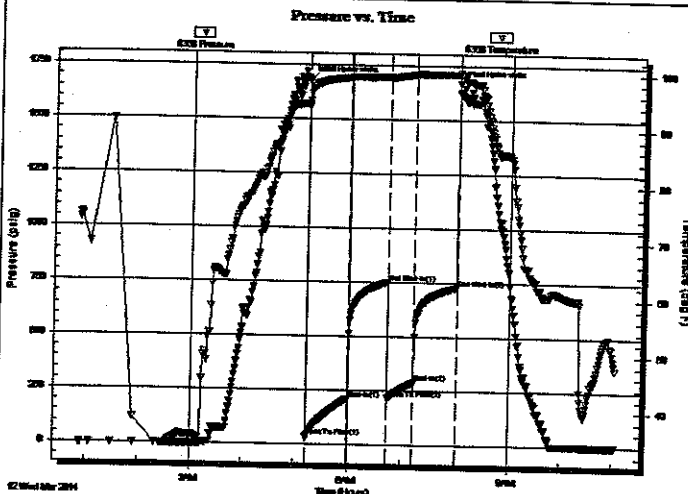
11:03:00

Last Calib.: 2014.03.12

Time On Btm: 2014.03.12 @ 05:12:45

Time Off Btm: 2014.03.12 @ 08:01:00

TEST COMMENT: 45 - IF - Surface blow built to bottom of bucket in 6 min.
 45 - ISI - No Return
 30 - FF - Surface blow built to bottom of bucket in 25 min.
 45 - FSI - No Return



PRESSURE SUMMARY

Time (Min.)	Pressure (psig)	Temp (deg F)	Annotation
0	1679.84	94.41	Initial Hydro-static
1	35.08	93.98	Open To Flow (1)
46	211.48	99.10	Shut-in(1)
91	751.91	99.24	End Shut-in(1)
91	216.65	99.01	Open To Flow (2)
121	289.87	99.76	Shut-in(2)
168	728.11	99.82	End Shut-in(2)
169	1668.60	100.16	Final Hydro-static

Recovery

Length (ft)	Description	Volume (bbl)
294.00	MW - 80W - 20M - little oil on tool	4.12
293.00	WM - 30W - 70M - faint oil spots	4.11

Gas Rates

Choke (inches)	Pressure (psig)	Gas Rate (Mcf/d)



TRILOBITE TESTING, INC.

DRILL STEM TEST REPORT

Castle Resources Inc.
 Box 87
 Schoenchen KS 67667
 ATTN: Jerry Green

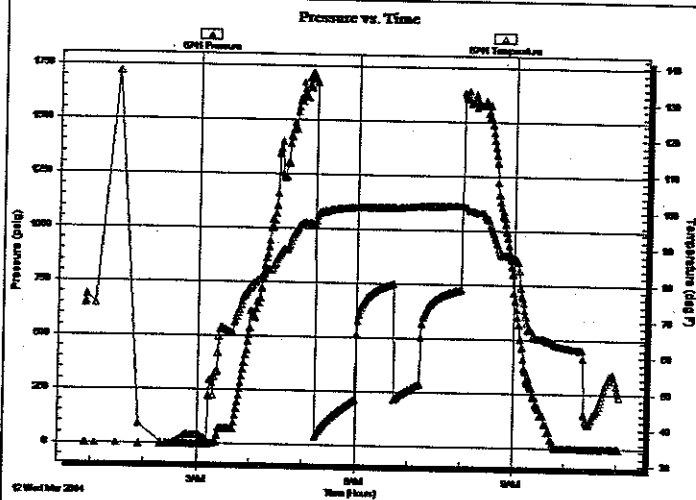
6-11S-15W Russell, KS
Hachmeister #1
 Job Ticket: 56911 **DST#: 2**
 Test Start: 2014.03.12 @ 00:52:00

GENERAL INFORMATION:

Formation: **LKC E-I**
 Deviated: No Whipstock: ft (KB)
 Time Tool Opened: 05:13:00
 Time Test Ended: 11:03:00
 Interval: **3340.00 ft (KB) To 3464.00 ft (KB) (TVD)**
 Total Depth: **3725.00 ft (KB) (TVD)**
 Hole Diameter: **7.88 inches** Hole Condition: Good
 Test Type: Conventional Straddle (Initial)
 Tester: Royal Fisher
 Unit No: #54
 Reference Elevations: 2049.00 ft (KB)
 2044.00 ft (CF)
 KB to GR/CF: 5.00 ft

Serial #: 6741 **Inside**
 Press@RunDepth: psig @ 3341.00 ft (KB) Capacity: 8000.00 psig
 Start Date: 2014.03.12 End Date: 2014.03.12 Last Callb.: 2014.03.12
 Start Time: 00:52:05 End Time: 11:03:00 Time On Btm:
 Time Off Btm:

TEST COMMENT: 45 - IF - Surface blow built to bottom of bucket in 6 min.
 45 - ISI - No Return
 30 - FF - Surface blow built to bottom of bucket in 25 min.
 45 - FSI - No Return



PRESSURE SUMMARY

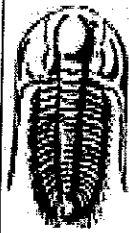
Time (Min.)	Pressure (psig)	Temp (deg F)	Annotation

Recovery

Length (ft)	Description	Volume (bbl)
294.00	MW - 80W - 20M - little oil on tool	4.12
293.00	WM - 30W - 70M - faint oil spots	4.11

Gas Rates

Choke (Inches)	Pressure (psig)	Gas Rate (Mcf/d)



TRILOBITE TESTING, INC.

DRILL STEM TEST REPORT

Castle Resources Inc.

6-11S-15W Russell,KS

Box 87
Schoenchen KS 67667

Hachmeister #1

Job Ticket: 56911

DST#: 2

ATTN: Jerry Green

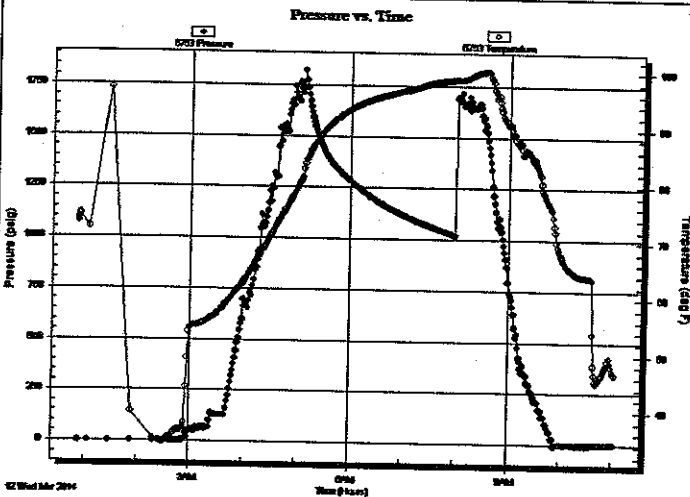
Test Start: 2014.03.12 @ 00:52:00

GENERAL INFORMATION:

Formation: **LKC E - I**
 Deviated: No Whipstock: ft (KB)
 Time Tool Opened: 05:13:00
 Time Test Ended: 11:03:00
 Interval: **3340.00 ft (KB) To 3464.00 ft (KB) (TVD)**
 Total Depth: 3725.00 ft (KB) (TVD)
 Hole Diameter: 7.88 inches Hole Condition: Good
 Test Type: Conventional Straddle (Initial)
 Tester: Royal Fisher
 Unit No: #54
 Reference Elevations: 2049.00 ft (KB)
 2044.00 ft (CF)
 KB to GR/CF: 5.00 ft

Serial #: 6753 Below (Straddle)
 Press@RunDepth: psig @ 3471.00 ft (KB)
 Start Date: 2014.03.12 End Date: 2014.03.12 Capacity: 8000.00 psig
 Start Time: 00:52:05 End Time: 11:03:00 Last Calib.: 2014.03.12
 Time On Btrn:
 Time Off Btrn:

TEST COMMENT:
 45 - IF - Surface blow built to bottom of bucket in 6 min.
 45 - ISI - No Return
 30 - FF - Surface blow built to bottom of bucket in 25 min.
 45 - FSI - No Return



PRESSURE SUMMARY

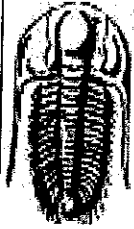
Time (Min.)	Pressure (psig)	Temp (deg F)	Annotation

Recovery

Length (ft)	Description	Volume (bbl)
294.00	MW - 80W - 20M - little oil on tool	4.12
293.00	WM - 30W - 70M - faint oil spots	4.11

Gas Rates

	Choke (inches)	Pressure (psig)	Gas Rate (Mcf/d)



**TRILOBITE
TESTING, INC.**

DRILL STEM TEST REPORT

TOOL DIAGRAM

Castle Resources Inc.

6-11S-15W Russell, KS

Box 87
Schoenchen KS 67667

Hachmeister #1

Job Ticket: 56911

DST#: 2

ATTN: Jerry Green

Test Start: 2014.03.12 @ 00:52:00

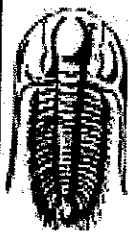
Tool Information

Drill Pipe:	Length: 3335.00 ft	Diameter: 3.80 inches	Volume: 46.78 bbl	Tool Weight: 2500.00 lb
Heavy Wt. Pipe:	Length: 0.00 ft	Diameter: 0.00 inches	Volume: 0.00 bbl	Weight set on Packer: 25000.00 lb
Drill Collar:	Length: 0.00 ft	Diameter: 2.25 inches	Volume: 0.00 bbl	Weight to Pull Loose: 60000.00 lb
			<u>Total Volume: 46.78 bbl</u>	Tool Chased 0.00 ft
Drill Pipe Above KB:	15.00 ft			String Weight: Initial 48000.00 lb
Depth to Top Packer:	3340.00 ft			Final 58000.00 lb
Depth to Bottom Packer:	3464.00 ft			
Interval between Packers:	124.00 ft			
Tool Length:	411.00 ft			
Number of Packers:	3	Diameter: 6.75 inches		

Tool Comments: Geo wanted me on location by 8:00pm on 3-11-14 during logs.

Tool Description

Tool Description	Length (ft)	Serial No.	Position	Depth (ft)	Accum. Lengths
Shut In Tool	5.00			3325.00	
Hydraulic tool	5.00			3330.00	
Packer	5.00			3335.00	20.00
Packer	5.00			3340.00	Bottom Of Top Packer
Stubb	1.00			3341.00	
Recorder	0.00	8368	Inside	3341.00	
Recorder	0.00	6741	Inside	3341.00	
Perforations	23.00			3364.00	
Change Over Sub	1.00			3365.00	
Drill Pipe	94.00			3459.00	
Change Over Sub	1.00			3460.00	
Blank Off Sub	1.00			3461.00	
Stubb	3.00			3464.00	124.00
Packer	5.00			3469.00	Tool Interval
Stubb	1.00			3470.00	
Change Over Sub	1.00			3471.00	
Recorder	0.00	6753	Below	3471.00	
Drill Pipe	252.00			3723.00	
Change Over Sub	1.00			3724.00	
Perforations	3.00			3727.00	
Bullnose	4.00			3731.00	267.00
					Bottom Packers & Anchor
Total Tool Length:	411.00				



TRILOBITE TESTING, INC

DRILL STEM TEST REPORT

FLUID SUMMARY

Castle Resources Inc.

6-11S-15W Russell,KS

Box 87
Schoenchen KS 67667

Hachmeister #1

Job Ticket: 56911

DST#: 2

ATTN: Jerry Green

Test Start: 2014.03.12 @ 00:52:00

Mud and Cushion Information

Mud Type: Gel Chem

Mud Weight: 9.00 lb/gal

Viscosity: 74.00 sec/qt

Water Loss: 16.77 in³

Resistivity: 0.00 ohm.m

Salinity: 14000.00 ppm

Filter Cake: 1.00 inches

Cushion Type:

Cushion Length: ft

Cushion Volume: bbl

Gas Cushion Type:

Gas Cushion Pressure: psig

Oil API: deg API

Water Salinity: 60000 ppm

Recovery Information

Recovery Table

Length ft	Description	Volume bbl
294.00	MW - 80W - 20M - little oil on tool	4.124
293.00	WM - 30W - 70M - faint oil spots	4.110

Total Length: 587.00 ft

Total Volume: 8.234 bbl

Num Fluid Samples: 0

Num Gas Bombs: 0

Serial #:

Laboratory Name:

Laboratory Location:

Recovery Comments:

Serial #: 8368

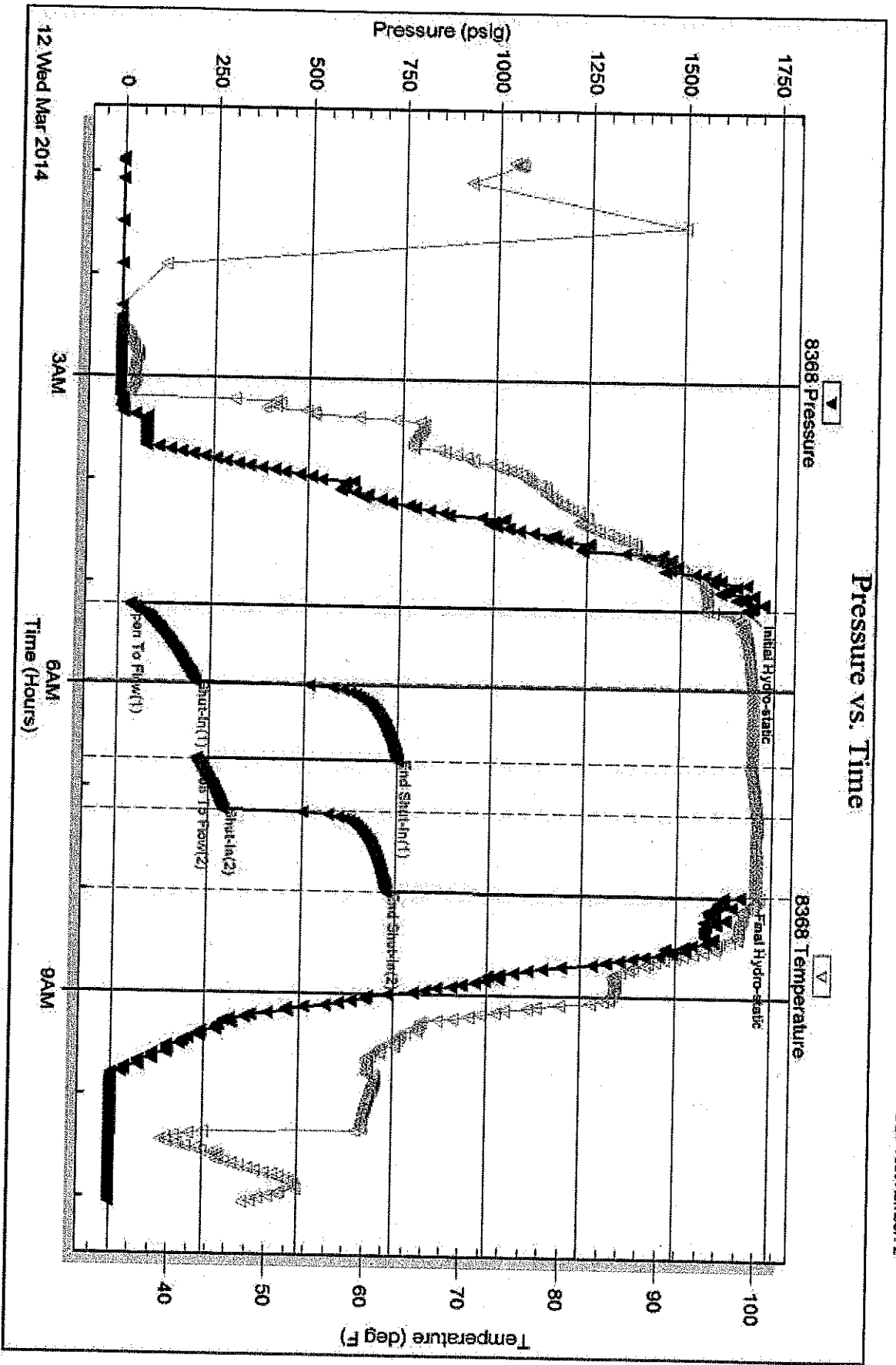
Inside

Castle Resources Inc.

Hochmeister #1

DST Test Number: 2

Pressure vs. Time



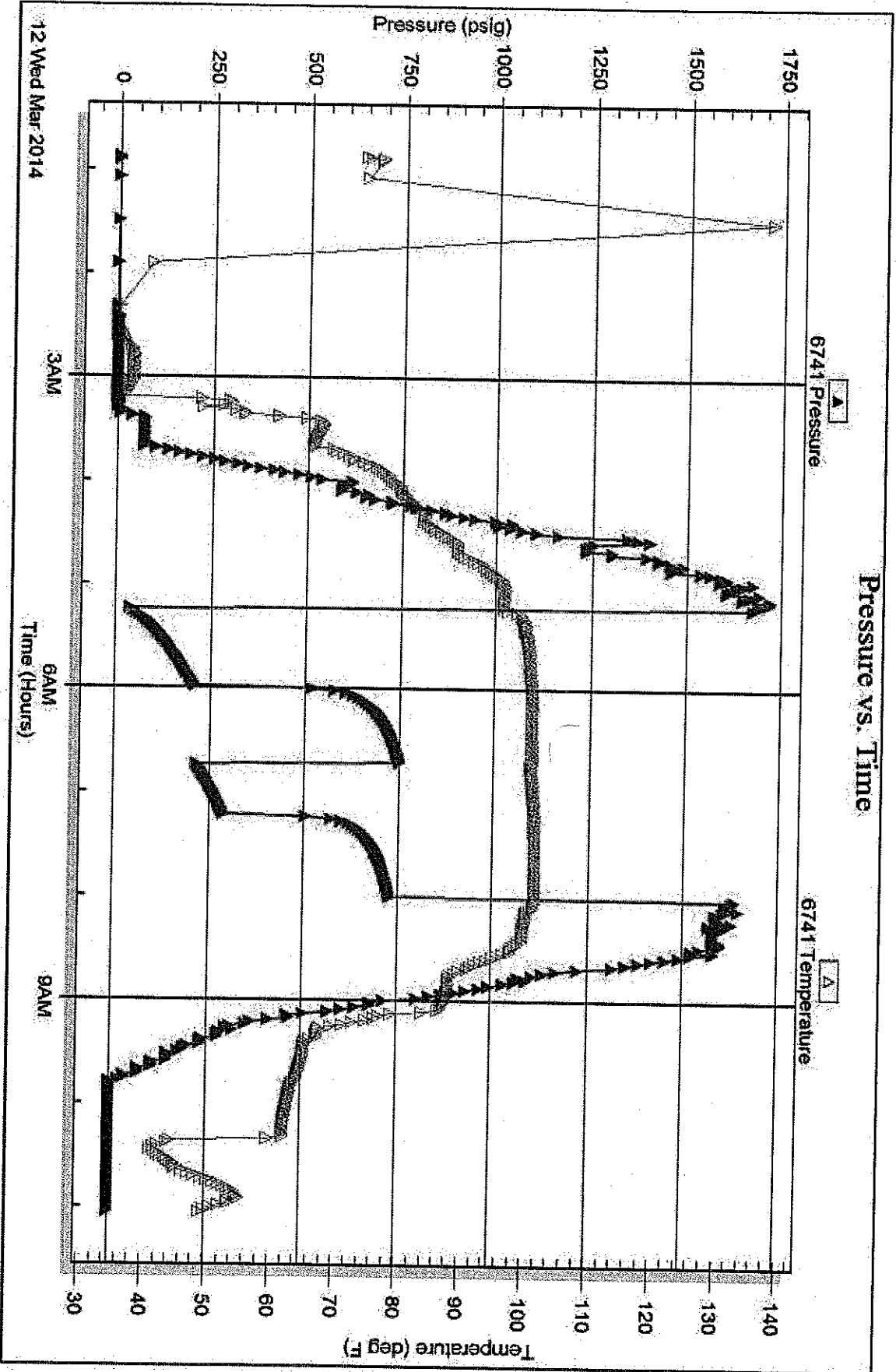
Serial #: 6741

Inside

Castle Resources Inc.

Hochmeister #1

DST Test Number: 2



Tribble Testing, Inc

Ref. No: 56911

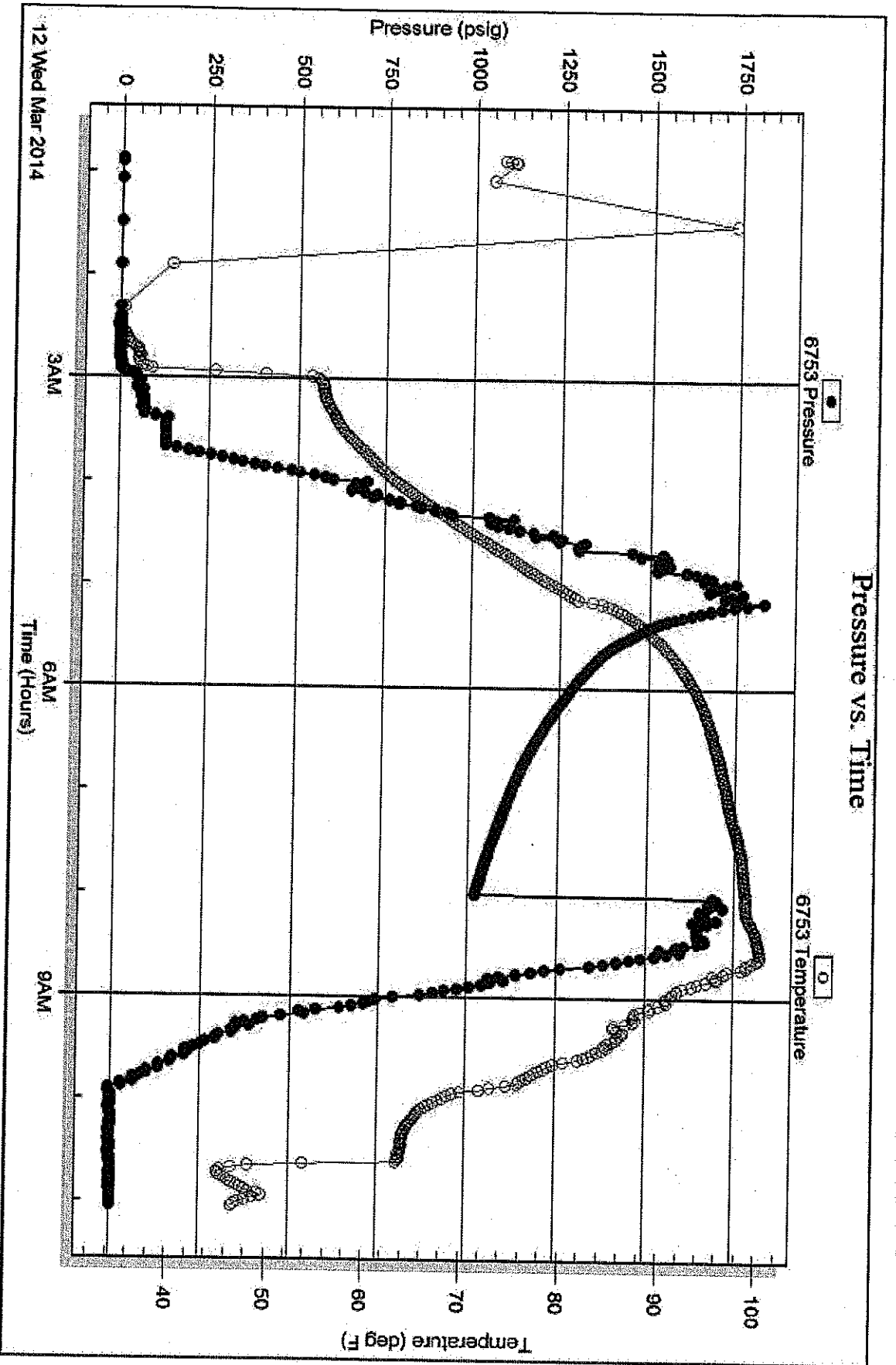
Printed: 2014.03.19 @ 17:35:15

Serial #: 6753

Below (Strabur) Resources Inc.

Hechmeister #1

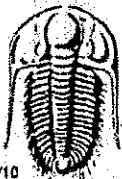
DST Test Number: 2



Tribolite Testing, Inc

Ref. No: 56911

Printed: 2014.03.19 @ 17:35:15



TRILOBITE TESTING INC.

1515 Commerce Parkway • Hays, Kansas 67601

Test Ticket

NO. 56910

Well Name & No. Hochmeister #1 Test No. 1 Date 3-10-14
 Company Castle Resources Inc. Elevation 2049 KB 2044 GL
 Address Box 87 Schenchen KS, 67667
 Co. Rep / Geo. Jerry Green Rig White Knight #1
 Location: Sec. 6 Twp. 11S Rge. 15W Co. Russell State KS

Interval Tested 3230-3325 Zone Tested Toronto - C
 Anchor Length 95' Drill Pipe Run 3233 Mud Wt. 8.9
 Top Packer Depth 3226 Drill Collars Run 0 Vis 56
 Bottom Packer Depth 3230 Wt. Pipe Run 0 WL 10.2
 Total Depth 3325 Chlorides 6,000 ppm System LCM 2 1/2 #

Blow Description IF-Surface blow built up to 1/4" slowly
ISI-No Return
FF-Weak Surface start after 4mins and built to 1/4"
FST-No Return

Rec	Feet of	%gas	%oil	%water	%mud
103	Mud			100	

Rec Total 103' BHT 96°F Gravity _____ API RW _____ @ _____ °F Chlorides _____ ppm

(A) Initial Hydrostatic 1613 Test 1150 T-On Location 2:05 pm
 (B) First Initial Flow 17 Jars _____ T-Started 3:10 pm
 (C) First Final Flow 40 Safety Joint _____ T-Open 4:36 pm
 (D) Initial Shut-In 401 Circ Sub N/C T-Pulled 7:36 pm
 (E) Second Initial Flow 43 Hourly Standby _____ T-Out 9:19 pm
 (F) Second Final Flow 62 Mileage 250 R/T 72rt 111.60 Comments _____
 (G) Final Shut-In 388 Sampler _____
 (H) Final Hydrostatic 1568 Straddle _____

Shale Packer 250 Ruined Shale Packer _____
 Extra Packer _____ Ruined Packer _____
 Extra Recorder _____ Extra Copies _____
 Day Standby _____ Sub Total 0
 Accessibility _____ Total 1511.60
 Sub Total 1511.60 MP/DST Disc't _____

Approved By _____ Our Representative [Signature]
 Trilobite Testing Inc. shall not be liable for damaged of any kind of the property or personnel of the one for whom a test is made, or for any loss suffered or sustained, directly or indirectly, through the use of its equipment, or its statements or opinion concerning the results of any test, tools lost or damaged in the hole shall be paid for at cost by the party for whom the test is made.



TRILOBITE TESTING INC.

1515 Commerce Parkway • Hays, Kansas 67601

Test Ticket

NO. 56911

Well Name & No. Hochmeister #1 Test No. 2 Date 3-11-14
 Company Castle Resources Inc. Elevation 2049 KB 2044 GL
 Address Box 87 Schoonchen KS 671667
 Co. Rep / Geo. Jerry Green Rig White Knight #1
 Location: Sec. 6 Twp. 11S Rge. 15W Co. Russell State KS

Interval Tested 3340-3464 Zone Tested E, F, G, H, T
 Anchor Length 124' Drill Pipe Run 3335' Mud Wt. 9.1
 Top Packer Depth 3336 Drill Collars Run 0 Vis 74
 Bottom Packer Depth 3340 Wt. Pipe Run 0 WL 116.8
 Total Depth 3725 Chlorides 14,000 ppm System LCM 2#
 Blow Description IF - Surface blow built to bottom of bucket in 6 min.
ISZ - No return
FF - Surface blow built to bottom of bucket in 25 min.
FST - No return

Rec	Feet of	%gas	%oil	%water	%mud
<u>293</u>	<u>WM - faint spots</u>		<u>30</u>	<u>70</u>	
<u>294</u>	<u>MW</u>		<u>80</u>	<u>20</u>	
	<u>some oil on top of tool</u>				

Rec Total 587 BHT 99°F Gravity _____ API RW 223 @ 60 °F Chlorides 14,000 ppm

(A) Initial Hydrostatic 116.79 Test 1150 T-On Location 7:45 pm
 (B) First Initial Flow 35 Jars T-Started 12:52 am
 (C) First Final Flow 211 Safety Joint T-Open 5:13 am
 (D) Initial Shut-In 751 Circ Sub NC T-Pulled 7:58 am
 (E) Second Initial Flow 216 Hourly Standby 6h 600 T-Out 11:05 am
 (F) Second Final Flow 289 Mileage 250 R/T 111.60 Comments Geo wanted me on location at 8:00 pm
 (G) Final Shut-In 728 Sampler Ruined Shale Packer
 (H) Final Hydrostatic 116.68 Straddle 600 Ruined Packer
 Shale Packer 250 Extra Copies
 Extra Packer Extra Recorder
 Day Standby Sub Total 0
 Accessibility Total 2711.60
 Sub Total 2711.60 MP/DST Disc't _____

Approved By _____ Our Representative [Signature]
 Trilobite Testing Inc. shall not be liable for damaged of any kind of the property or personnel of the one for whom a test is made, or for any loss suffered or sustained, directly or indirectly, through the use of its equipment, or its statements or opinion concerning the results of any test, tools lost or damaged in the hole shall be paid for at cost by the party for whom the test is made.