



TEMPORARY ABANDONMENT WELL APPLICATION

All blanks must be complete

OPERATOR: License# _____
Name: _____
Address 1: _____
Address 2: _____
City: _____ State: _____ Zip: _____ + _____
Contact Person: _____
Phone: (_____) _____
Contact Person Email: _____
Field Contact Person: _____
Field Contact Person Phone: (_____) _____

API No. 15- _____
Spot Description: _____
____ - ____ - ____ - ____ Sec. _____ Twp. _____ S. R. _____ E W
_____ feet from N / S Line of Section
_____ feet from E / W Line of Section
GPS Location: Lat: _____, Long: _____
(e.g. xx.xxxxx) (e.g. -xxx.xxxxx)
Datum: NAD27 NAD83 WGS84
County: _____ Elevation: _____ GL KB
Lease Name: _____ Well #: _____
Well Type: (check one) Oil Gas OG WSW Other: _____
 SWD Permit #: _____ ENHR Permit #: _____
 Gas Storage Permit #: _____
Spud Date: _____ Date Shut-In: _____

	Conductor	Surface	Production	Intermediate	Liner	Tubing
Size						
Setting Depth						
Amount of Cement						
Top of Cement						
Bottom of Cement						

Casing Fluid Level from Surface: _____ How Determined? _____ Date: _____
Casing Squeeze(s): _____ to _____ w / _____ sacks of cement, _____ to _____ w / _____ sacks of cement. Date: _____
(top) (bottom) (top) (bottom)
Do you have a valid Oil & Gas Lease? Yes No
Depth and Type: Junk in Hole at _____ (depth) Tools in Hole at _____ (depth) Casing Leaks: Yes No Depth of casing leak(s): _____
Type Completion: ALT. I ALT. II Depth of: DV Tool: _____ w / _____ sacks of cement Port Collar: _____ w / _____ sack of cement
(depth) (depth)
Packer Type: _____ Size: _____ Inch Set at: _____ Feet
Total Depth: _____ Plug Back Depth: _____ Plug Back Method: _____

Geological Data:

Formation Name	Formation Top	Formation Base	Completion Information
1. _____	At: _____	to _____ Feet	Perforation Interval _____ to _____ Feet or Open Hole Interval _____ to _____ Feet
2. _____	At: _____	to _____ Feet	Perforation Interval _____ to _____ Feet or Open Hole Interval _____ to _____ Feet

UNDER PENALTY OF PERJURY I HEREBY ATTEST THAT THE INFORMATION CONTAINED HEREIN IS TRUE AND CORRECT TO THE BEST OF MY KNOWLEDGE

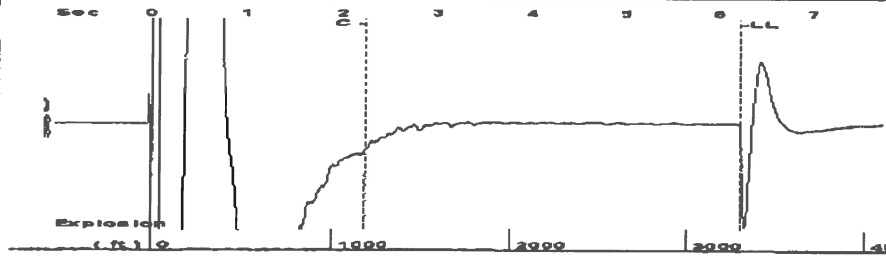
Submitted Electronically

Do NOT Write in This Space - KCC USE ONLY	Date Tested: _____	Results: _____	Date Plugged: _____	Date Repaired: _____	Date Put Back in Service: _____
	Review Completed by: _____ Comments: _____				
TA Approved: <input type="checkbox"/> Yes <input type="checkbox"/> Denied Date: _____					

Mail to the Appropriate KCC Conservation Office:

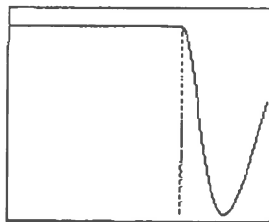
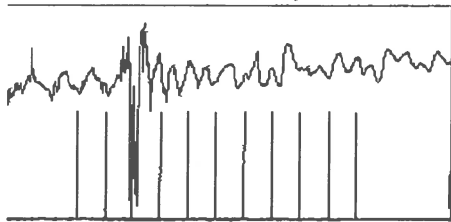
	KCC District Office #1 - 210 E. Frontview, Suite A, Dodge City, KS 67801	Phone 620.225.8888
	KCC District Office #2 / UPGS - 3450 N. Rock Road, Building 600, Suite 601, Wichita, KS 67226	Phone 316.630.4000
	KCC District Office #3 - 1500 SW Seventh Steet, Chanute, KS 66720	Phone 620.432.2300
	KCC District Office #4 - 2301 E. 13th Street, Hays, KS 67601-2651	Phone 785.625.0550

Group: Belpre Well: Young 1-19 (acquired on: 04/22/14 13:57:15)



Filter Type High Pass Automatic Collar Count Yes Time 6.232 sec
 Manual Acoustic Velo 1028.94 ft/s Manual JTS/sec 16.2602 Joints 104.276 Jts
 Depth 3299.28 ft

[1.0 to 2.0 (Sec)]



Analysis Method: Automatic

Group: Belpre Well: Young 1-19 (acquired on: 04/22/14 13:57:15)

Production
 Current Potential
 Oil - . - 0.0 BBL/D
 Water - . - 0.0 BBL/D
 Gas - . - 0.0 Mscf/D

IPR Method Vogel
 PBHP/SBHP 0.64
 Production Efficiency 54.4

Oil 40 deg API
 Water 1.05 Sp.Gr.H2O
 Gas 0.93 Sp.Gr.AIR

Acoustic Velocity 1058.82 ft/s

Liquid Level Depth
 3299.28 ft

Pump Intake Depth 4335.00 ft
 Formation Depth 4297.00 ft



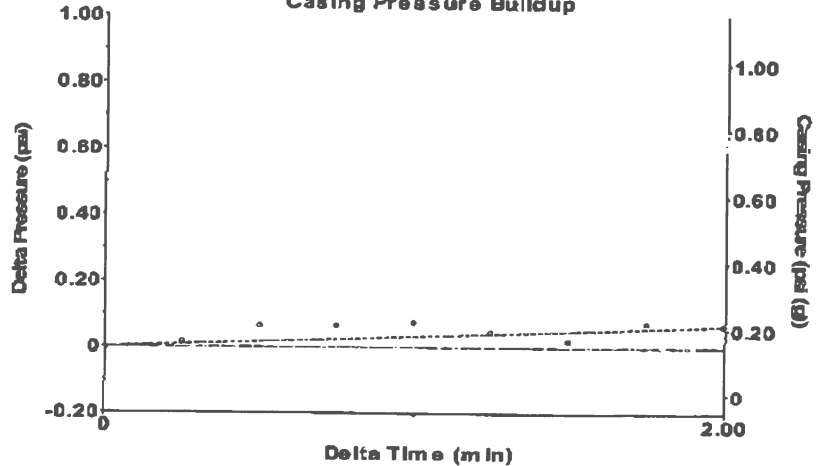
Producing
 Casing Pressure 0.1 psi (g)
 Casing Pressure Buildup 0.066 psi
 2.00 min
 Gas/Liquid Interface Pressure 1.8 psi (g)
 Pump Intake 319.2 psi (g)
 Producing BHP 306.6 psi (g)
 Static BHP 487.0 psi (g)

Formation Submergence
 Total Gaseous Liquid Column HT (TVD) 1036 ft
 Equivalent Gas Free Liquid HT (TVD) 936 ft

Acoustic Test

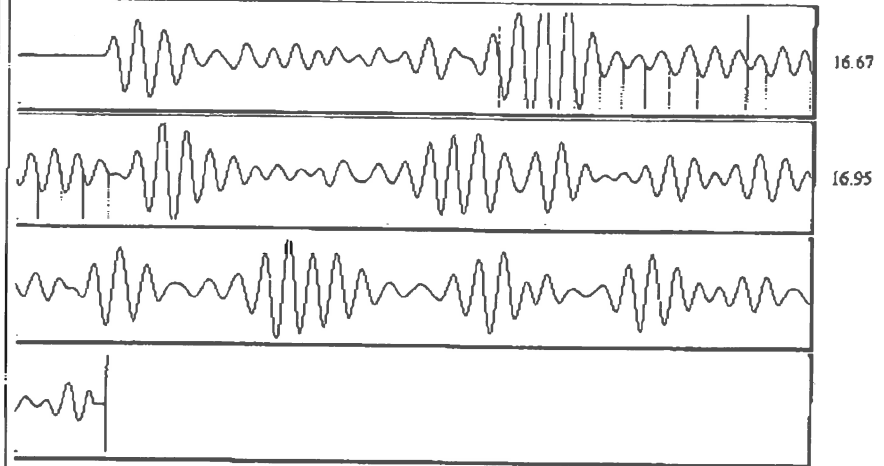
Group: Belpre Well: Young 1-19 (acquired on: 04/22/14 13:57:15)

Casing Pressure Buildup



Change in Pressure 0.07 psi PT13440
 Change in Time 2.00 min Range 0-7 psi

Group: Belpre Well: Young 1-19 (acquired on: 04/22/14 13:57:15)



Acoustic Velocity 1058.82 ft/s Joints counted 17
 Joints Per Second 16.7323 jts/sec Joints to liquid level 104.276
 Depth to liquid level 3299.28 ft Filter Width 14.2602 18.2602
 Automatic Collar Count Yes Time to 1st Collar 1.216 2.232

Conservation Division
District Office No. 1
210 E. Frontview, Suite A
Dodge City, KS 67801



Phone: 620-225-8888
Fax: 620-225-8885
<http://kcc.ks.gov/>

Shari Feist Albrecht, Chair
Jay Scott Emler, Commissioner
Pat Apple, Commissioner

Sam Brownback, Governor

May 01, 2014

Rebecca George
F. G. Holl Company L.L.C.
9431 E CENTRAL STE 100
WICHITA, KS 67206-2563

Re: Temporary Abandonment
API 15-185-20156-00-01
YOUNG OWWO 1
NW/4 Sec.19-24S-15W
Stafford County, Kansas

Dear Rebecca George:

"Your temporary abandonment (TA) application for the well listed above has been approved. In accordance with K.A.R. 82-3-111 the TA status of this well will expire 05/01/2015.

- * If you return this well to service or plug it, please notify the District Office.
- * If you sell this well you are required to file a Transfer of Operator form, T-1.
- * If the well will remain temporarily abandoned, you must submit a new TA application, CP-111, before 05/01/2015.

You may contact me at the number above if you have questions.

Very truly yours,

Steve Pfeifer"