



TEMPORARY ABANDONMENT WELL APPLICATION

OPERATOR: License# _____
 Name: _____
 Address 1: _____
 Address 2: _____
 City: _____ State: _____ Zip: _____ + _____
 Contact Person: _____
 Phone: (_____) _____
 Contact Person Email: _____
 Field Contact Person: _____
 Field Contact Person Phone: (_____) _____

API No. 15- _____
 Spot Description: _____
 _____ - _____ - _____ - _____ Sec. _____ Twp. _____ S. R. _____ E W
 _____ feet from N / S Line of Section
 _____ feet from E / W Line of Section
 GPS Location: Lat: _____, Long: _____
(e.g. xx.xxxxx) (e.g. -xxx.xxxxx)
 Datum: NAD27 NAD83 WGS84
 County: _____ Elevation: _____ GL KB
 Lease Name: _____ Well #: _____
 Well Type: (check one) Oil Gas OG WSW Other: _____
 SWD Permit #: _____ ENHR Permit #: _____
 Gas Storage Permit #: _____
 Spud Date: _____ Date Shut-In: _____

	Conductor	Surface	Production	Intermediate	Liner	Tubing
Size						
Setting Depth						
Amount of Cement						
Top of Cement						
Bottom of Cement						

Casing Fluid Level from Surface: _____ How Determined? _____ Date: _____

Casing Squeeze(s): _____ to _____ w / _____ sacks of cement, _____ to _____ w / _____ sacks of cement. Date: _____
(top) (bottom) (top) (bottom)

Do you have a valid Oil & Gas Lease? Yes No

Depth and Type: Junk in Hole at _____ Tools in Hole at _____ Casing Leaks: Yes No Depth of casing leak(s): _____
(depth) (depth)

Type Completion: ALT. I ALT. II Depth of: DV Tool: _____ w / _____ sacks of cement Port Collar: _____ w / _____ sack of cement
(depth) (depth)

Packer Type: _____ Size: _____ Inch Set at: _____ Feet

Total Depth: _____ Plug Back Depth: _____ Plug Back Method: _____

Geological Data:

Formation Name	Formation Top	Formation Base	Completion Information
1. _____	At: _____	to _____ Feet	Perforation Interval _____ to _____ Feet or Open Hole Interval _____ to _____ Feet
2. _____	At: _____	to _____ Feet	Perforation Interval _____ to _____ Feet or Open Hole Interval _____ to _____ Feet

~~UNDER PENALTY OF PERJURY I HEREBY ATTEST THAT THE INFORMATION CONTAINED HEREIN IS TRUE AND CORRECT TO THE BEST OF MY KNOWLEDGE~~

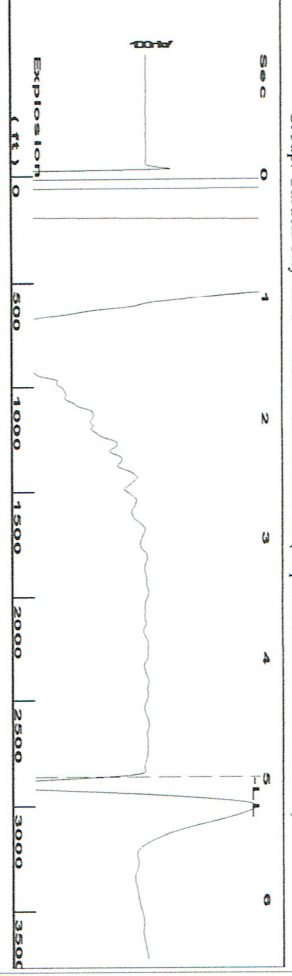
Submitted Electronically

Do NOT Write in This Space - KCC USE ONLY	Date Tested: _____	Results: _____	Date Plugged: _____	Date Repaired: _____	Date Put Back in Service: _____
	Review Completed by: _____ Comments: _____				
TA Approved: <input type="checkbox"/> Yes <input type="checkbox"/> Denied Date: _____					

Mail to the Appropriate KCC Conservation Office:

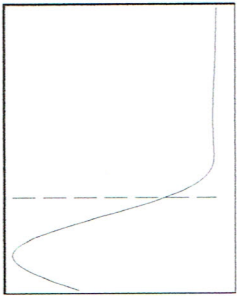
	KCC District Office #1 - 210 E. Frontview, Suite A, Dodge City, KS 67801	Phone 620.225.8888
	KCC District Office #2 / UPGS - 3450 N. Rock Road, Building 600, Suite 601, Wichita, KS 67226	Phone 316.630.4000
	KCC District Office #3 - 1500 SW Seventh Steet, Chanute, KS 66720	Phone 620.432.2300
	KCC District Office #4 - 2301 E. 13th Street, Hays, KS 67601-2651	Phone 785.625.0550

Group: Garden City TAD Well: YUNCKER 5-14 (acquired on: 04/24/14 15:28:27)



Liquid level calculated with user supplied Acoustic Velocity

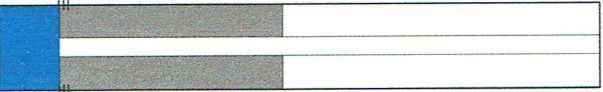
Acoustic Velocity 1150 ft/s



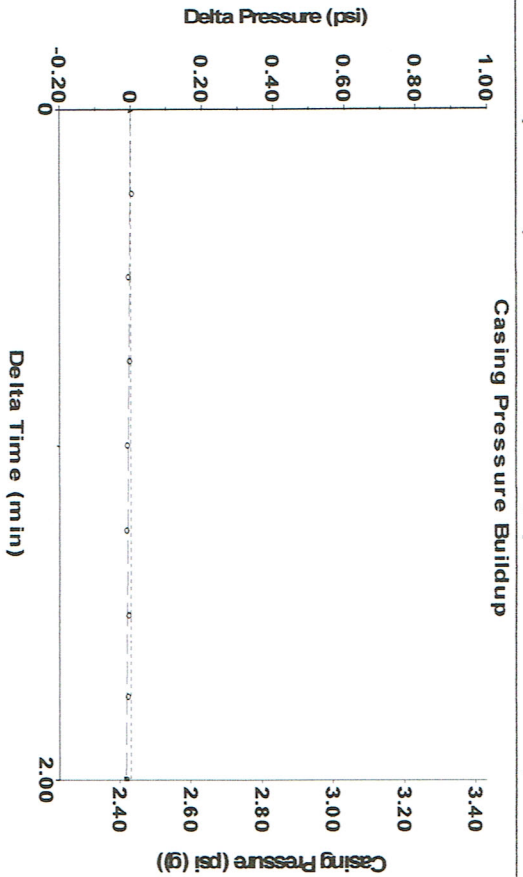
Analysis Method: Acoustic Velocity

Group: Garden City TAD Well: YUNCKER 5-14 (acquired on: 04/24/14 15:28:27)

Production Current	Potential	Casing Pressure	Static
Oil -*-	-*- BBL/D	2.4 psi (g)	Oil Column Height
Water -*-	-*- BBL/D	-0.013 psi	MID 0 ft
Gas -*-	-*- Misc/D	2.00 min	
IPR Method	Vogel	Gas/Liquid Interface Pressure	
PBHP/SBHP	-*-	3.9 psi (g)	
Production Efficiency	0.0		
Oil 40 deg API		Liquid Level Depth	Water Column Height
Water 1.05 Sp.Gr.H2O		2863.50 ft	MD 2442 ft
Gas 0.85 Sp.Gr.AIR		Pump Intake Depth	
		5358.00 ft	
		Formation Depth	
		5306.00 ft	
Acoustic Velocity	1150 ft/s		Static BHP
			1114.4 psi (g)



Group: Garden City TAD Well: YUNCKER 5-14 (acquired on: 04/24/14 15:28:27)



Change in Pressure -0.01 psi PT8746
 Change in Time 2.00 min Range 0 - ? psi

Group: Garden City TAD Well: YUNCKER 5-14 (acquired on: 04/24/14 15:28:27)

Entered Acoustic Velocity for Liquid Level depth determination



Shari Feist Albrecht, Chair
Thomas E. Wright, Commissioner
Jay Scott Emler, Commissioner

Corporation Commission

Sam Brownback, Governor

NOTICE OF VIOLATION

LYNNE MOON
MERIT ENERGY COMPANY, LLC
13727 NOEL RD STE 1200
DALLAS TX 75240

March 27, 2014
KCC Lic.-32446

RE: API Well No. 15-081-20233-00-01
YUNCKER 5-14
14-29S-34W, NWSE
HASKELL County, Kansas

Dear Operator:

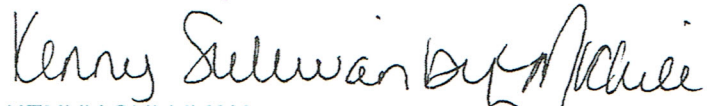
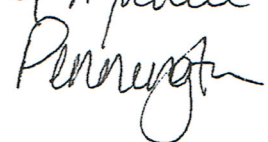
During a lease inspection conducted on March 06, 2014, on the above-referenced well, a KCC representative documented the following probable regulatory violation:

K.A.R. 82-3-111, Temporary Abandonment; penalty; plugging.

Within 90 days after operations cease on a well, the operator must either return the well to service, plug the well, or obtain approval for temporary abandonment status from the District Office.

If you do not correct this violation and contact me by APRIL 17, 2014, I will refer this matter to our legal department with a recommendation that the Commission take formal enforcement action including a monetary penalty for the violation and an order for you to plug the well.

Sincerely,


KENNY SULLIVAN
KCC District # 1


Conservation Division
District Office No. 1
210 E. Frontview, Suite A
Dodge City, KS 67801



Phone: 620-225-8888
Fax: 620-225-8885
<http://kcc.ks.gov/>

Shari Feist Albrecht, Chair
Jay Scott Emler, Commissioner
Pat Apple, Commissioner

Sam Brownback, Governor

May 01, 2014

Matt Ogden
Merit Energy Company, LLC
13727 NOEL RD STE 1200
DALLAS, TX 75240

Re: Temporary Abandonment
API 15-081-20233-00-01
YUNCKER 5-14
SE/4 Sec.14-29S-34W
Haskell County, Kansas

Dear Matt Ogden:

"Your temporary abandonment (TA) application for the well listed above has been approved. In accordance with K.A.R. 82-3-111 the TA status of this well will expire 05/01/2015.

- * If you return this well to service or plug it, please notify the District Office.
- * If you sell this well you are required to file a Transfer of Operator form, T-1.
- * If the well will remain temporarily abandoned, you must submit a new TA application, CP-111, before 05/01/2015.

You may contact me at the number above if you have questions.

Very truly yours,

Steve Pfeifer"