

Saman Sharifaie

Petroleum Geologist

GEOLOGIST'S REPORT

DRILLING TIME AND SAMPLE LOG

COMPANY **Martin Drilling Co., Inc.**
LEASE **Zweygardt #1P #1-3**

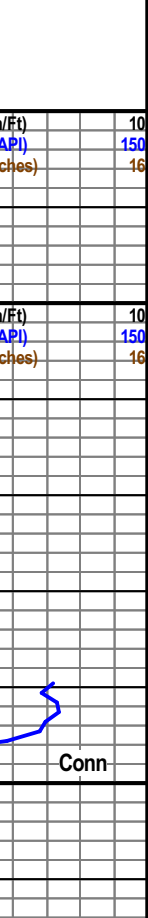
FIELD **Widcat**
LOCATION **330' FSL & 330' FFL**
SEC **3** TWP **3S** RGE **41W**
COUNTY **Cheyenne** STATE **Kansas**
CONTRACTOR **Martin Drilling #14**
SPUD **12/09/13** COMP **12/20/13**
RTD **5300'** LTD **5299'**
MUD UP **3000'** TYPE MUD **Chemical**

SAMPLES SAVED FROM **4240'** TO RTD
DRILLING TIME KEPT FROM **4240'** TO RTD
SAMPLES EXAMINED FROM **4240'** TO RTD
GEOLOGICAL SUPERVISION FROM **3940'**

REFERENCE WELL **Phyllis #1-2**
ELEVATIONS **KB 3599'**
DF _____
GL **3589'**
Measurements Are All From Kelly Bushing
CASING CONDUCTOR _____
SURFACE **8-5/8" at 305'**
PRODUCTION **5-1/2" at 528'**

ELECTRICAL SURVEYS _____
CND: DIL: MEL: SWIC: _____
Pioneer Hydrilite

Formation	Sample Tops	E-log Tops	Stand Pos.
Anhydrite		3447 (+152)	-10
Basalt Anhydrite	4348 (-640)	4246 (-647)	-4
Tussock	4358 (-750)	4365 (-760)	0
Oil Sand	4420 (-833)	4424 (-835)	2
L. Silt/Slg	4470 (-1071)	4464 (-1065)	-2
Stark	4859 (-1260)	4858 (-1259)	-8
Pawnee	4952 (-1353)	4950 (-1351)	-2
Cherokee		5194 (-1595)	DNR
Mississippian			



REMARKS Due to fair shows of oil in multiple pay zones and positive DST results, it is recommended and agreed upon by all parties that production casing be set to further evaluate this well.

Respectfully Submitted,
API #15-023-21373
Saman Sharifaie
Petroleum Geologist

*Tops have been adjusted to electric logs
**Anhydrite drill time was not recorded

