

George E. Peterson c/o.g.  
consulting geologist

3735 18th Street, Rd  
Topeka, Kansas 66614  
(785) 272-4585

GEOLOGIST'S LOG

COMPANY: L.D. DRILLING INC  
WELL NAME: HENRY TRUST #16  
LOCATION: 710' FNL 915' FWL (C N<sup>1</sup>/<sub>2</sub>, SE, NW, NW)  
SEC. 35 T. 6 S; R. 13. E  
COUNTY: JACKSON STATE: KANSAS  
ELEVATION: 1168.786<sup>e</sup> 1177 KB  
API #: 15-085-20049-00-09  
FIELD: SOLDIER  
CONTRACTOR: SUMMIT DRILLING LLC  
GEOLOGIST: George E. Peterson  
SPUD DATE: 1/17/14 COMP DATE: 1/28/14  
SAMPLES SAVED FROM: \_\_\_\_\_ TO: \_\_\_\_\_  
SAMPLES EXAMINED FROM: 1250 TO: TD  
RTD: 3470 LTD: 3433  
CORES: N/A

OPEN HOLE LOGS: CDL/CNL MEL/SOU DIL

SURFACE CASING SET: 349' PROD. CASING SET: \_\_\_\_\_  
GEOLOGICAL SUPERVISION FROM: Surf TO: TD  
COMMENTS: HUNTON opens new zone to produce  
Viola similar to Henry #4 excellent shows

FORMATION TOPS & STRUCTURAL POSITION

FORMATION	SAMPLE TOP	ELECTR. LOG TOP	DATUM	REF. WELLS			
				A	B	C	D
Heebner		1168	+112	+115	+113	+110	+112
Lansing	1282	1280	-101	-101	-97	-97	-100
B/KC	1624	1622	-443	-441	-440	-439	-442
Cherokee	1831	1828	-649	-648	-646	-643	-650
Miss	2504	2506	-1327	-1307	-1320	-1353	-1338
Kindershook	2576	2572	-1323	-1420	-1468	-1423	-1407
Hunton	2819	2820	-1641	-1639	-1644	-1639	-1644
Mag	3292	3290	-2177	-2123	-2108	-2113	-2128
Viola	3358	3361	-2182	-2195	-2174	-2181	-2200

REFERENCE WELL FOR STRUCTURE:

- A HENRY TRUST 1
- B HENRY TRUST 3
- C HENRY TRUST 4
- D HENRY TRUST 5

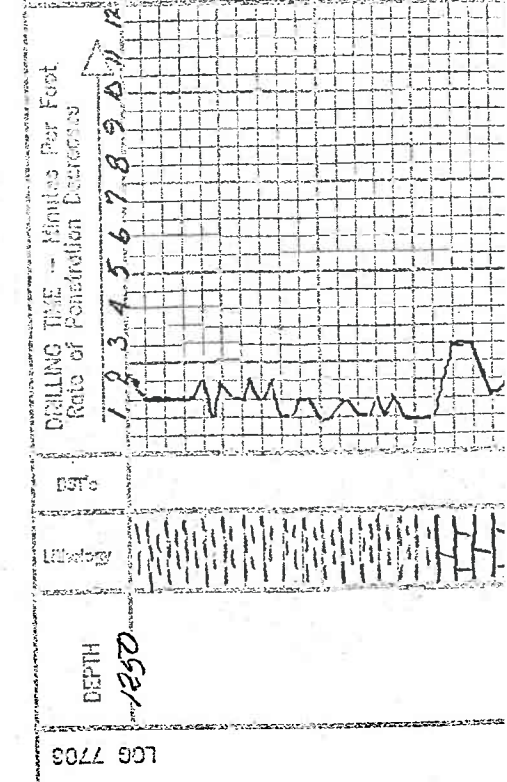
DRILL STEM TESTS

NO.	INT.	IFP	ISIP	SPF	PCIP	RECOVERY
1	2815-2835	30m	911	45	886	70' 100% oil 60' MCO 68% oil 320' HW 700m 46% oil 60' SW MCO 24% oil 30' Sotmco 8% oil

LEGEND

- Dolomite
- Chert
- Ool. Lime
- Limestone
- Carb sh
- Shale
- Sandstone
- Salt
- Anhydrite

SCALE " = 100'



REMARKS: RPM: 60  
WOB: 4K

SAMPLE DESCRIPTIONS:

- Shaly gray blk
- aa
- aa
- LS 18-20 ft + 1m

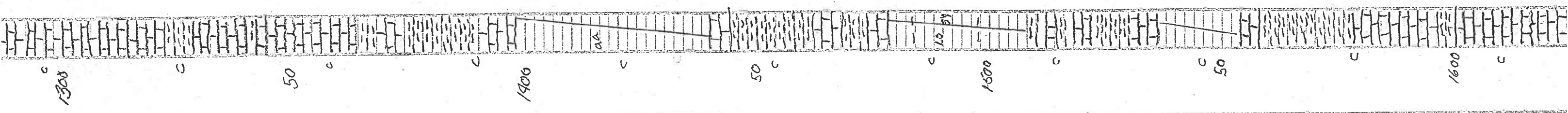
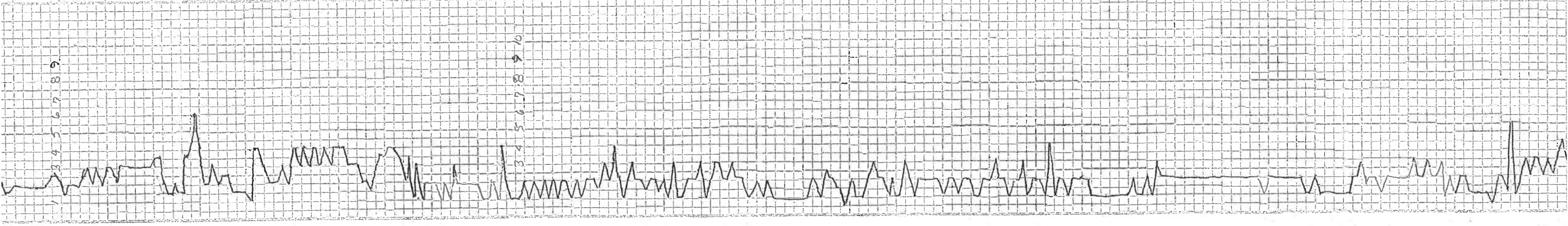
Log Top Logs  
1280 E101

RPM 55  
WOB 22K

RPM 60  
WOB 18K

SN 3/4"

Ls aa
Ls aa
Ls aa
shale blk
Ls aa
aa
aa
aa
Ls aa and sh dk gry blk
sh
Ls lt gry to soft
Ls
Ls
Ls
Ls
sh gry dk gry blk gry
aa
Ls 5/51
aa
aa
aa
aa
aa
sh dk gry
Ls lt to med tn - gry
Ls aa
Ls aa
sh blk med
sh aa
Ls lt to med tm - gry also clear
aa
Ls aa
aa
aa



1627 (-143)

Lo sht.
Sh dk grey cl ss - sandy sh
aa
aa
Ls aa
Sh
Sh
Ls mbrn
Ls & Sh
Ls & Sh
Ls & Sh
Sh an
Ls
Ls & Sh
Ls
Ls
Ls
Ls & Sh
Sh & Ls
Ls hard
Sh blk sandy
Sh gray sandy
scat coal seams
Ls Tn
Sh of coal
aa
aa
aa
Ls sand

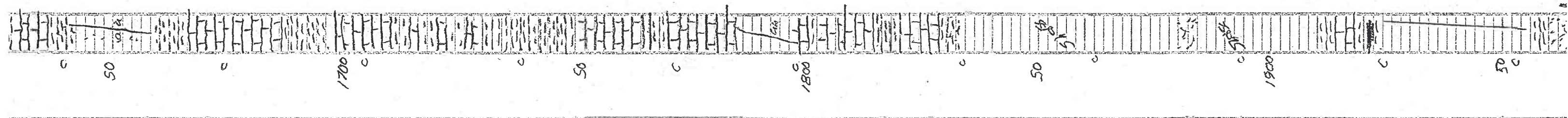
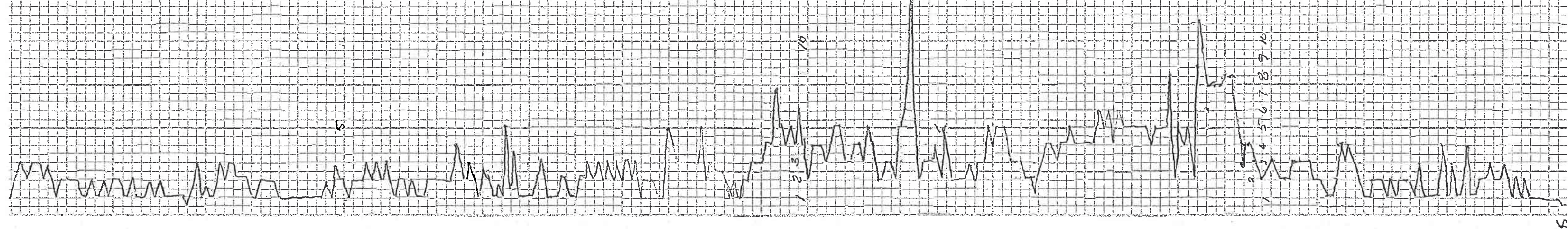
Rough

Rough

Top charcoal log top 1828 (-649)

Sh & Ls

Water line freeze





SS v f sand 0.2

SH

U1531 WT 2.6

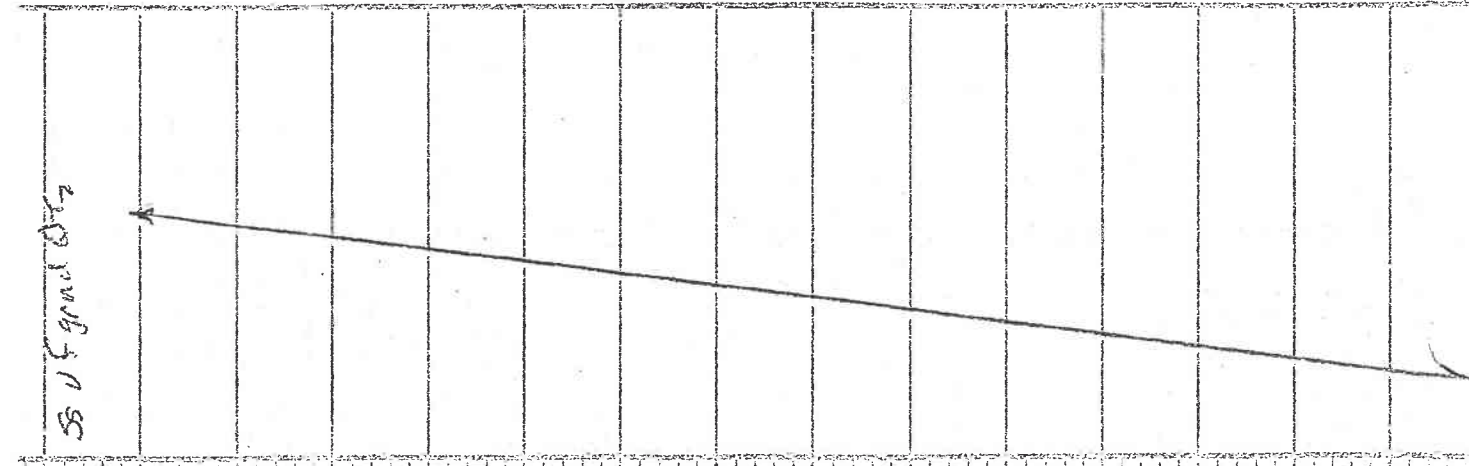
U1537  
WT 2.1  
Lcm 2

U1535  
WT 2.1  
Lcm 1

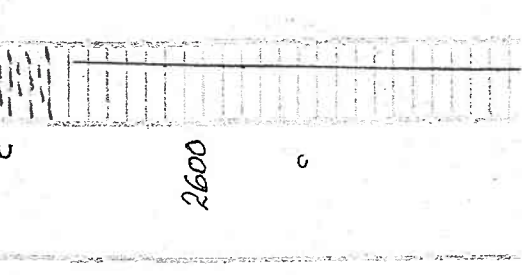
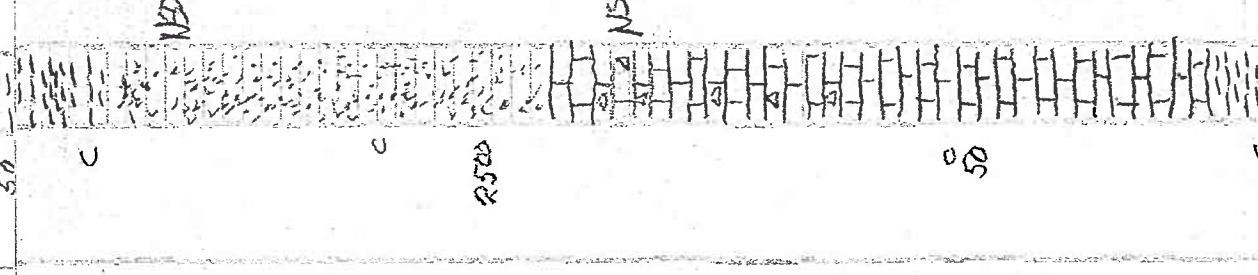
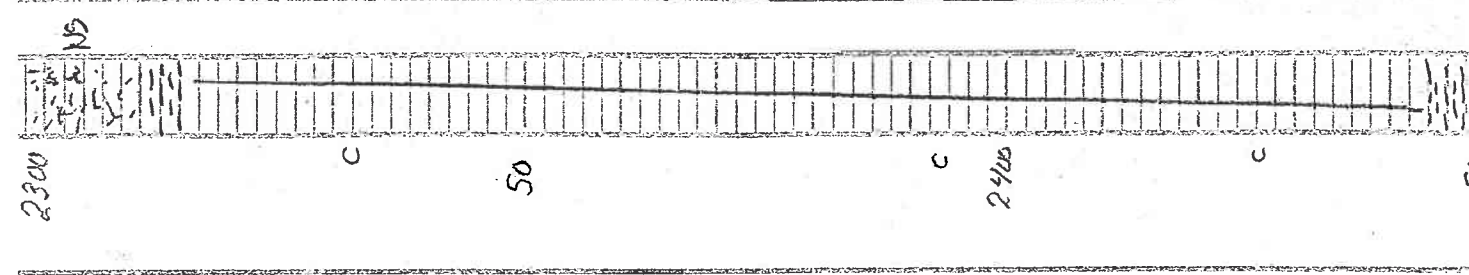
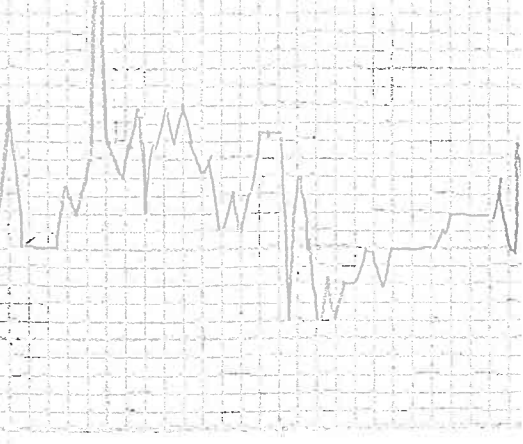
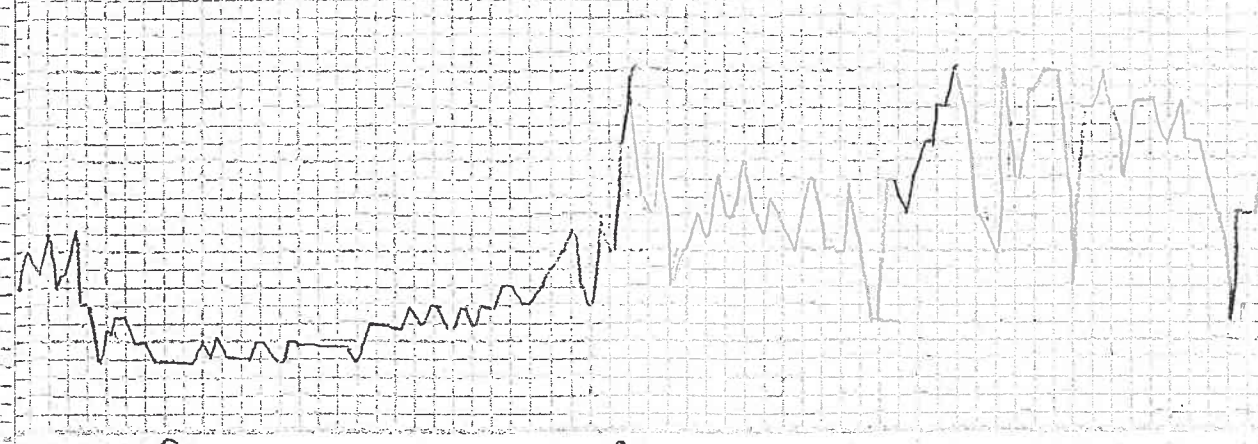
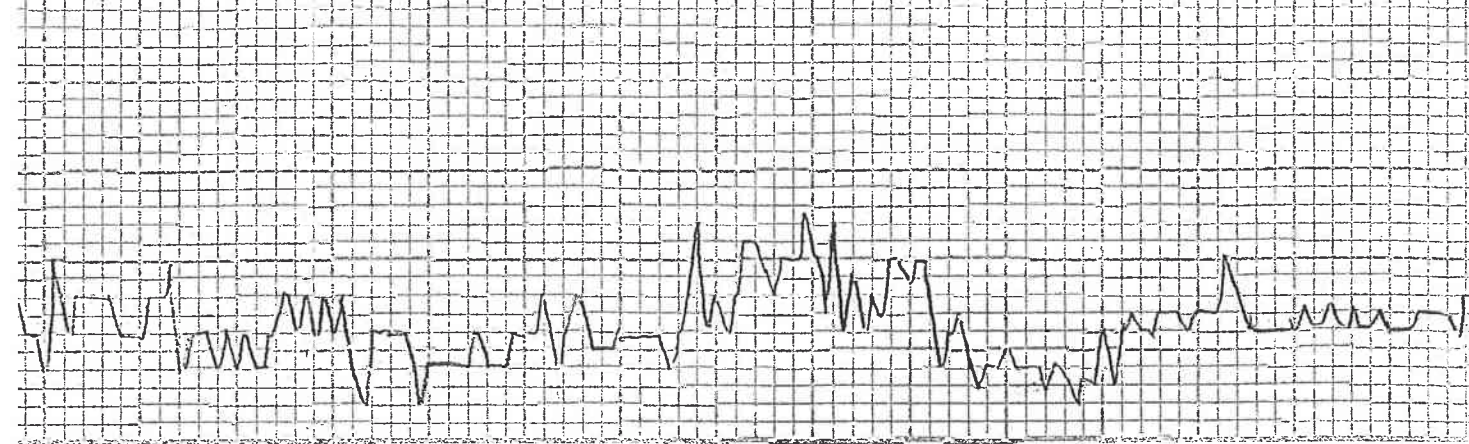
Miss (w log top  
R 508 (1327)  
Rough

Log Top 14h  
2572 (1393)

U1542 2.0  
Lcm 2



Sh gray sand  
 Ss mc sand pyrite  
 cl - wht qtz  
 aa  
 P-gas  
 aa  
 aa  
 aa  
 Limestone cl wt - thert  
 aa  
 aa  
 aa  
 aa  
 aa  
 aa  
 Sh gray sand



V1536 WT 9.1  
LCM 1 1/2

V1534  
LCM 4  
WT 9.2

London Log Top  
2820 (-1641)

CFS 30-15"  
DST #1

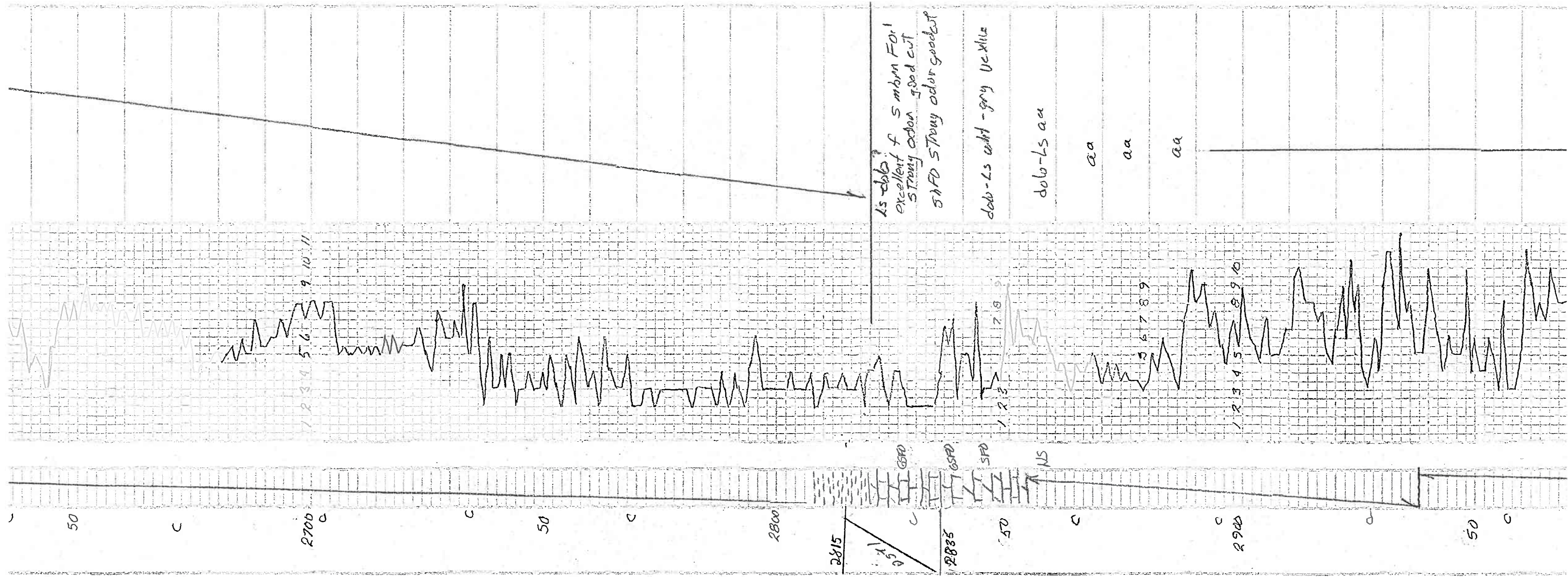
V1540 WT 9.2  
LCM 1 1/2

V1560  
WT 9.2  
LCM 4

ROUGH

V1555

WT 9.3



WT 9.3  
LCM 41.5

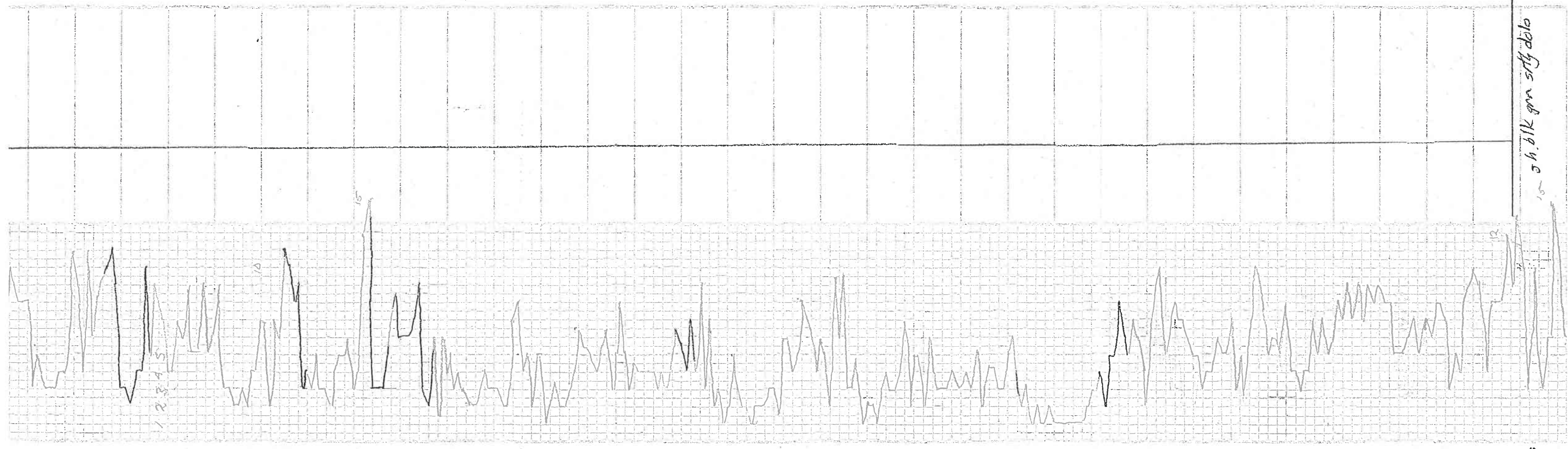
VIS 58 LCM 41.4  
WT 9.2

VIS 52 LCM 6  
WT 9.1

VIS 62 LCM 6.4  
WT 9.2

VIS 41  
WT 9.2  
LCM 4.4

Log Top Ma  
3290(-217)



5 h. blk gm sily dolo

3000 C  
3050 C  
3100 C  
3150 C  
3200 C  
3250 C  
3300 C

Ns

