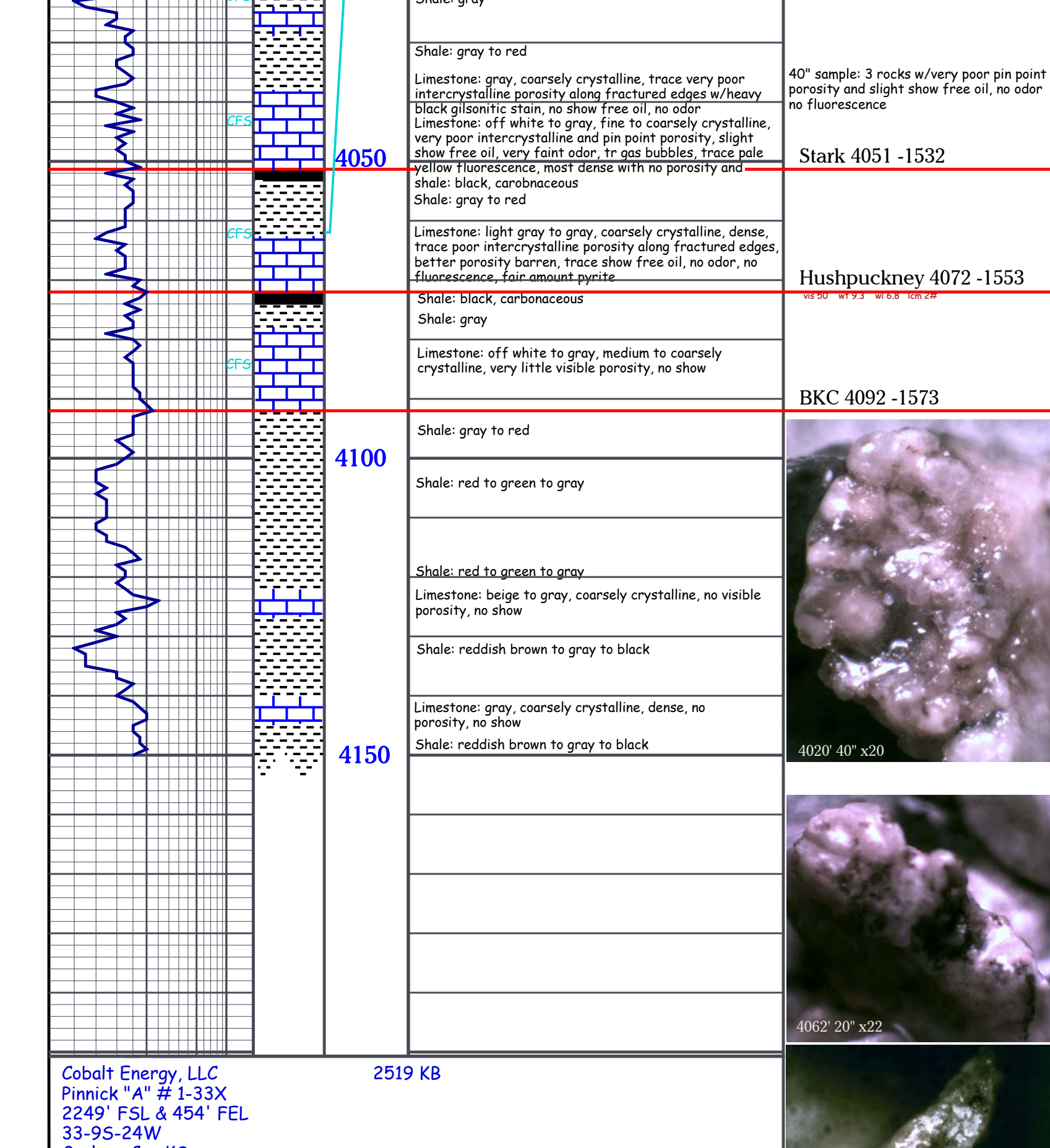
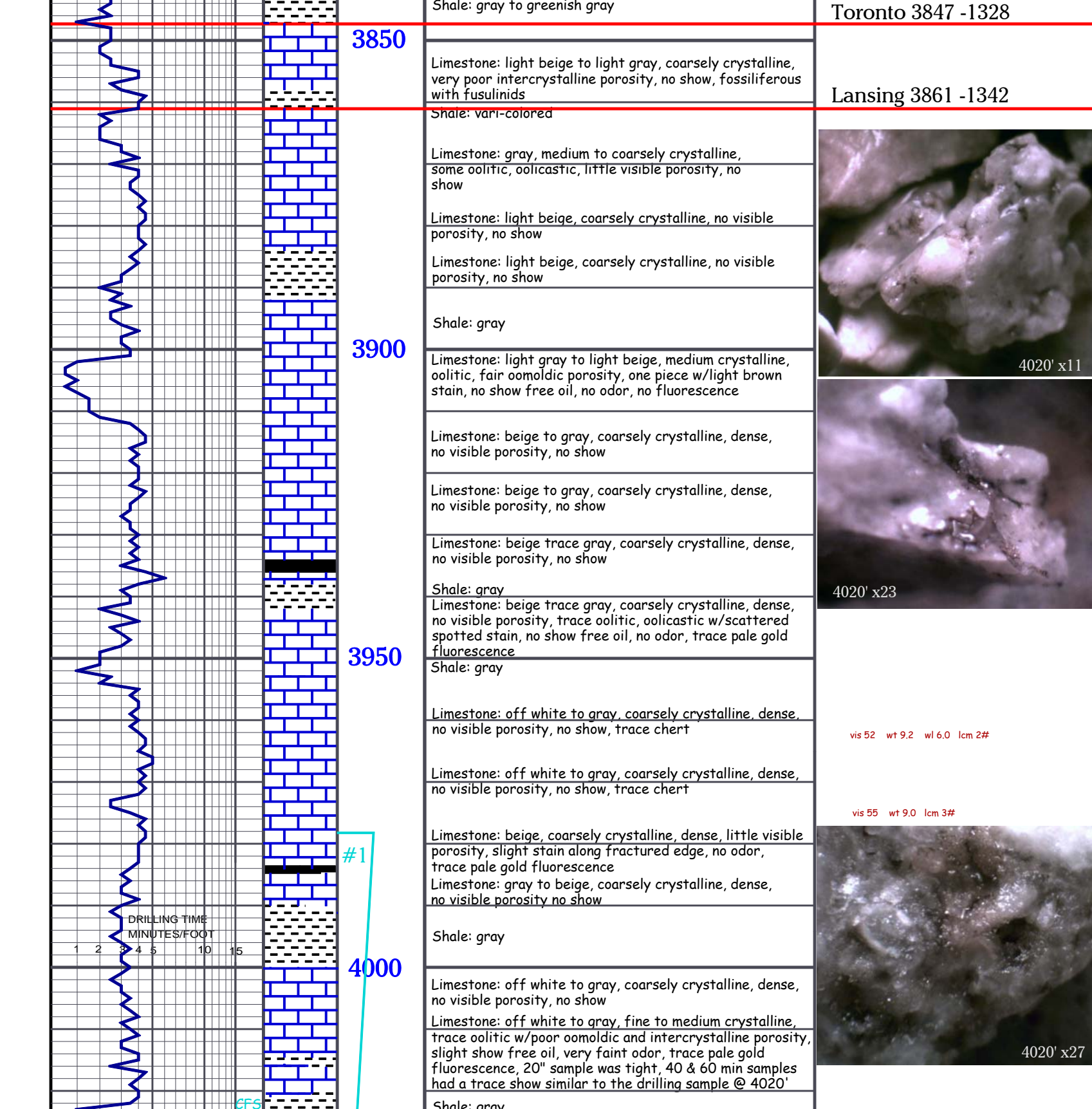
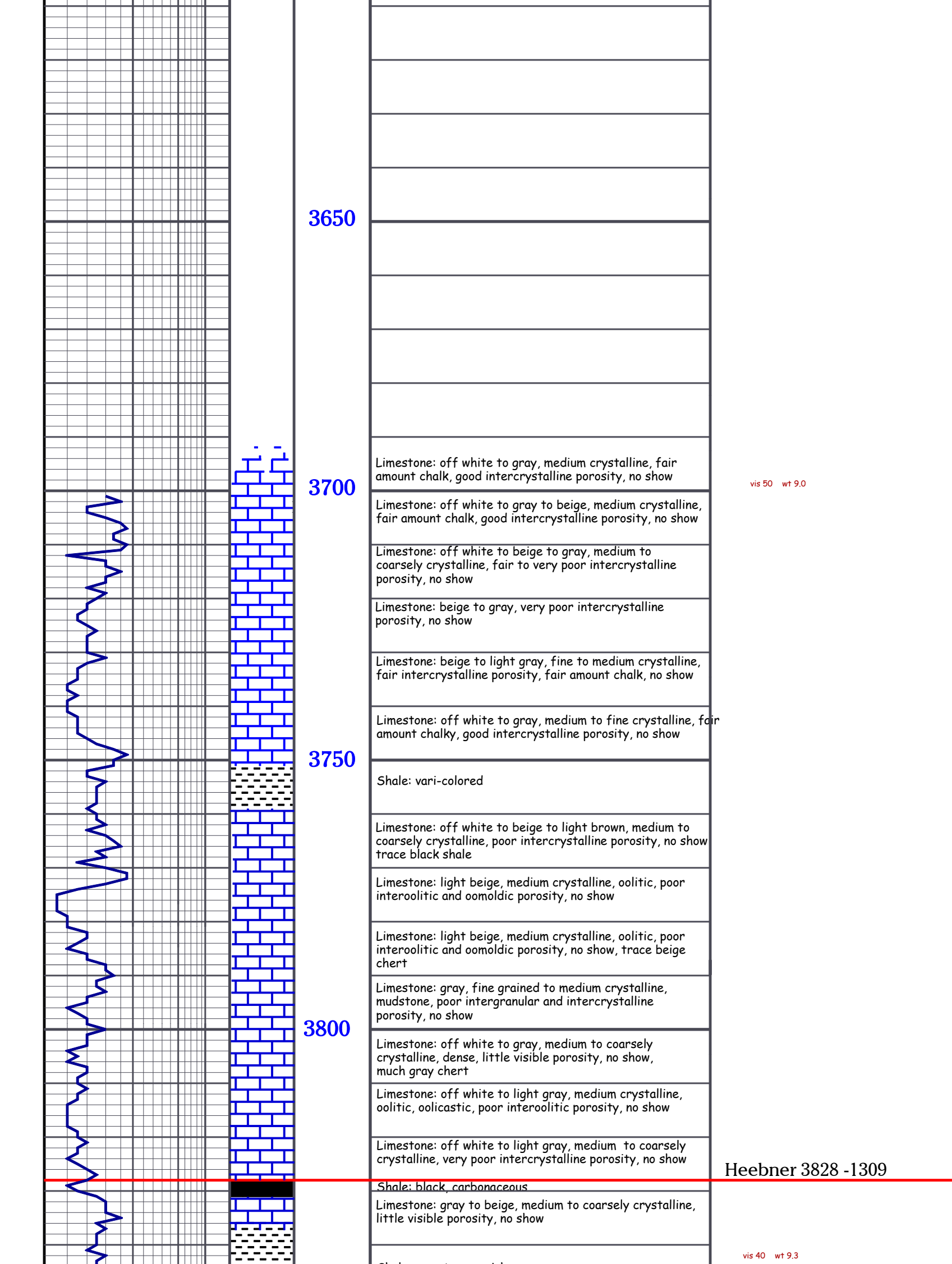
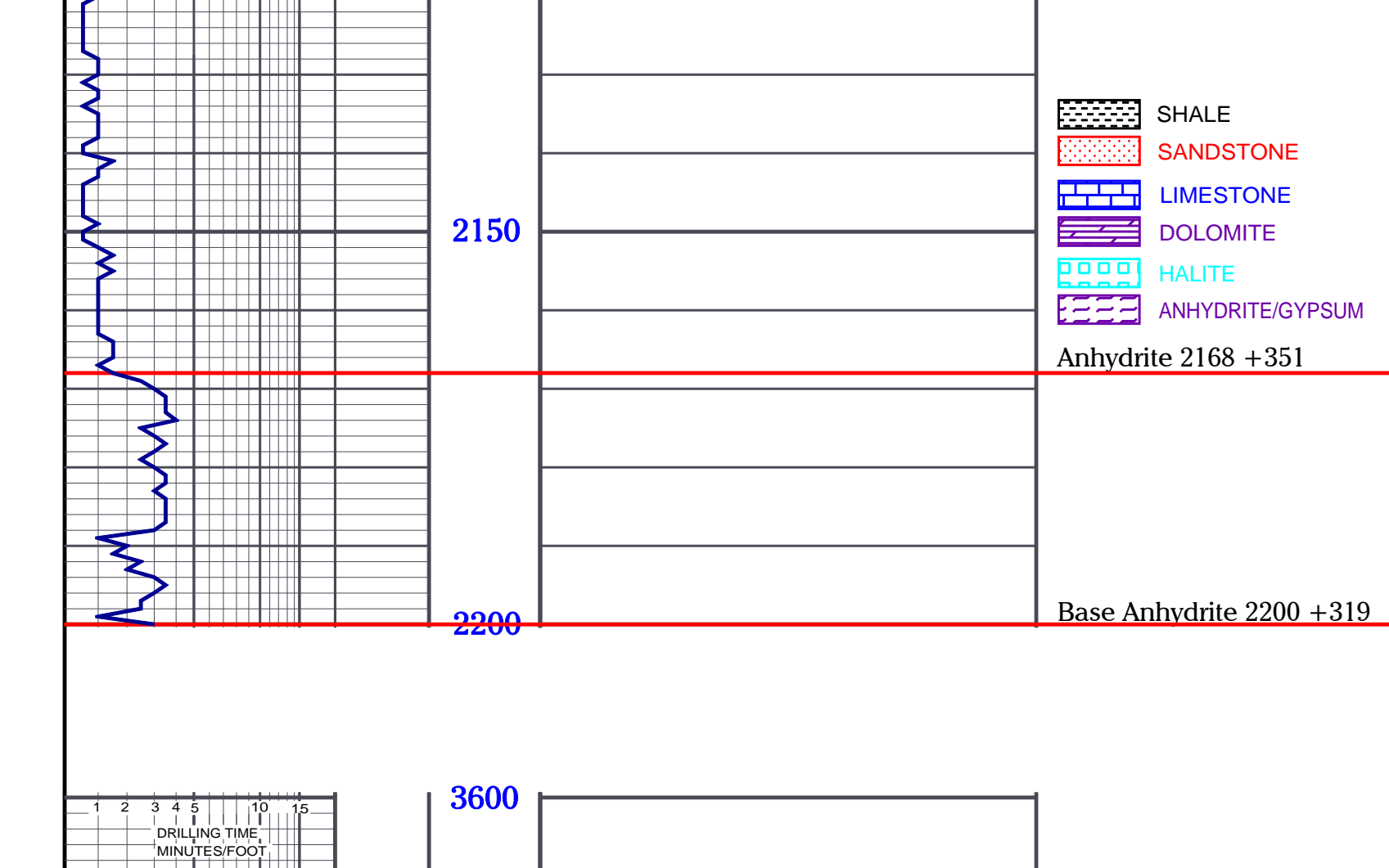


COMPANY	Cobalt Energy, LLC	ELEVATION	
LEASE	Pinnick "A" # 1-33X	K.B.	2519
FIELD	Wilkeal	D.F.	
LOCATION	2,249 FSL & 454 FEL	C.L.	2510
SEC.	33 TWP-S 9S RGE -24W	DEPTH MEASURED FROM	KB
COUNTY	Graham STATE Kansas	Log	Drilling
CONTRACTOR	Southwind Drilling Rig #8	Surface	8.98% @ 262'
SPUD	3-22-14 COMP	Production	NONE
	3-29-14	Electric Logs	
SAMPLES SAVED FROM	3700 TO RTD	DILUENT/DL	

FORMATION	SAMPLE	ELOG	DATUM	A. ELOG	B. ELOG	C. ELOG
Anhydrite	2148			+335	-358	-361
Base Anhydrite	2200			+300	-324	-334
Heebner	3828			-1303	-1295	-1301
Heebner	3827			-1303	-1316	-1324
Heebner	3861			-1332	-1349	-1348
Lansing	3855			-1346	-1472	-1468
Munick Creek	4051			-1528	-1527	-1527
Stark	4072			-1536	-1536	-1547
Hushpuckney	4092			-1556	-1556	-1568
BKC	4092			-1575	-1575	-1568
RTD	4190			-1629	-1604	-1571

A. 1380' FSL & 335' FEL, 32.95% 24W, Cobalt Energy, Crichtfield, #1-32
 B. 1340' FSL & 2100' FEL, 34.95% 24W, Cobalt Energy, Crichtfield, #1-32
 C. CHEMINEE 33-9S-24W, National Oil, #1 Kohari



2519 KB

Cobalt Energy, LLC
 Pinnick "A" # 1-33X
 2249' FSL & 454' FEL
 33-9S-24W
 Graham Co., KS

Comments:

GENERAL INFORMATION:

Formation: LKC "H,I,J"
 Deviated: No Whipstock: ft (KB)
 Time Tool Opened: 00:21:30
 Time Test Ended: 05:17:15

Test Type: Conventional Bottom Hole (Initial)
 Tester: Cody Bloedorn
 Unit No: 73

Interval: 3979.00 ft (KB) To 4062.00 ft (KB) (TVD)
 Total Depth: 4062.00 ft (KB) (TVD)
 Hole Diameter: 7.88 inches Hole Condition: Fair

Reference Elevations: 2519.00 ft (KB)
 2510.00 ft (CF)
 KB to GR/CF: 9.00 ft

Serial #: 8940 Outside
 Press@RunDepth: 63.96 psig @ 4046.00 ft (KB)
 Start Date: 2014.03.27
 Start Time: 18:58:05
 End Date: 2014.03.28
 End Time: 05:17:15
 Capacity: 8000.00 psig
 Last Calib.: 2014.03.28
 Time On Btm: 2014.03.28 @ 00:21:15
 Time Off Btm: 2014.03.28 @ 02:52:30

TEST COMMENT: 30 - IF- 1/2" blow
 60 - IS- No return
 30 - FF- No blow
 30 - FSI- No return

PRESSURE SUMMARY

Time (Min.)	Pressure (psig)	Temp (deg F)	Annotation
0	1993.68	108.20	Initial Hydro-static
1	47.48	107.19	Open To Flow (1)
29	54.93	107.97	Shut-In(1)
91	706.73	109.97	End Shut-In(1)
91	58.04	109.75	Open To Flow (2)
120	63.96	110.51	Shut-In(2)
151	694.44	111.48	End Shut-In(2)
152	1984.06	111.98	Final Hydro-static

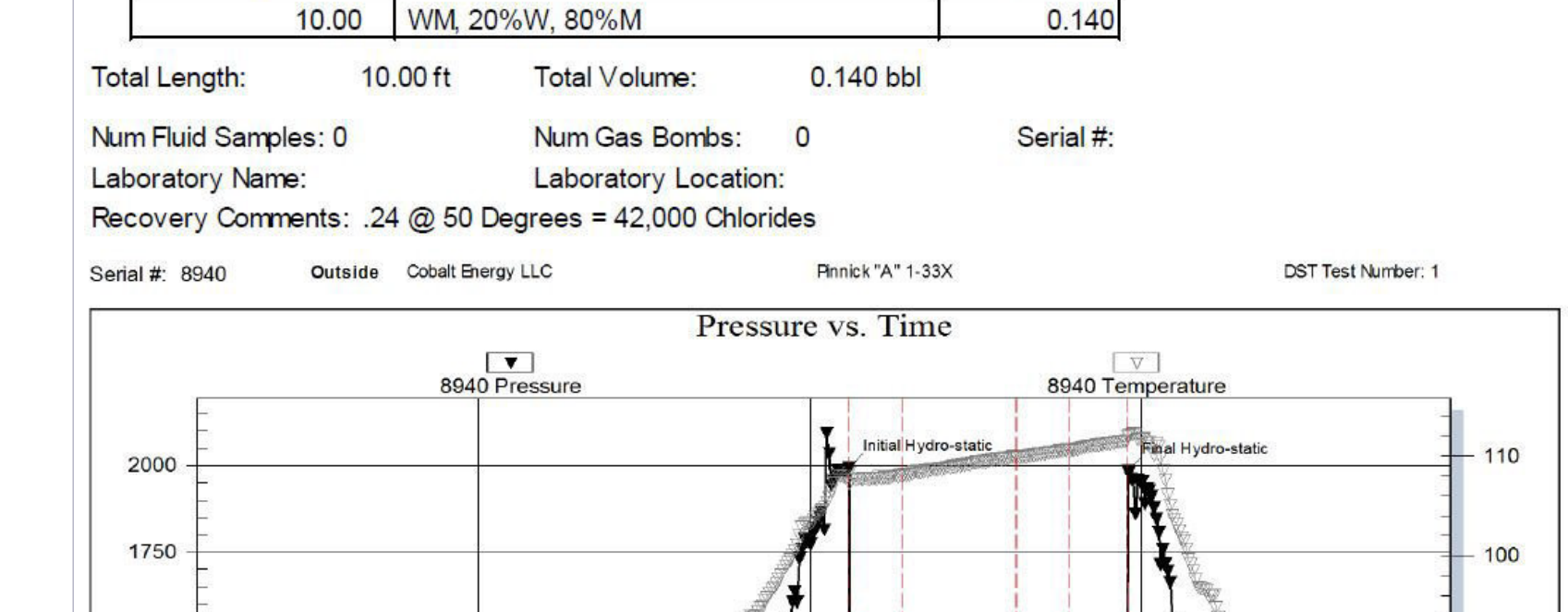
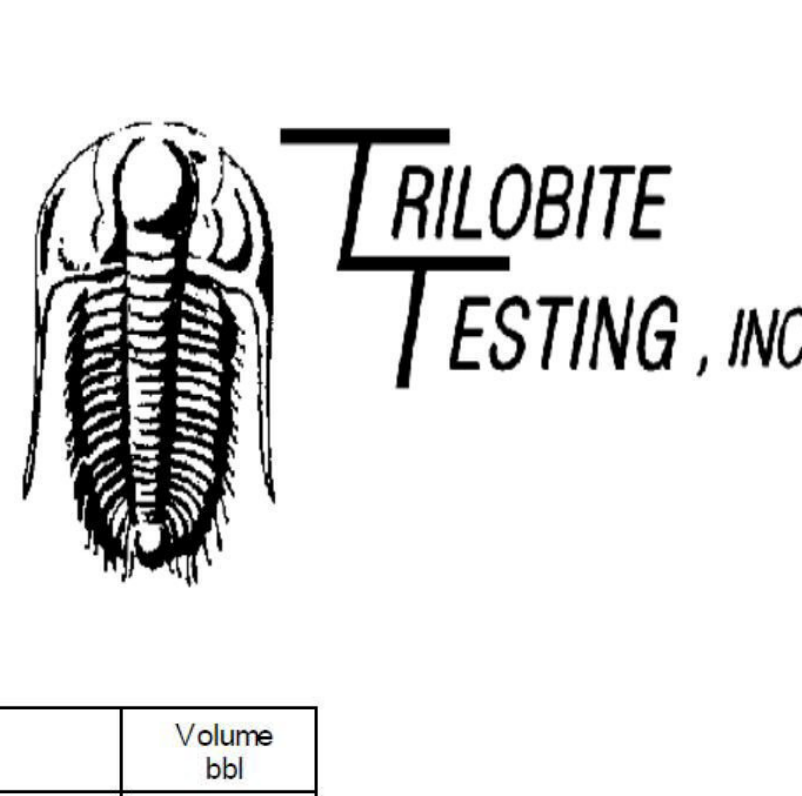
Recovery Table

Length ft	Description	Volume bbl
10.00	WM, 20%W, 80%M	0.140

Total Length: 10.00 ft Total Volume: 0.140 bbl

Num Fluid Samples: 0 Num Gas Bombs: 0 Serial #:
 Laboratory Name: Laboratory Location:
 Recovery Comments: .24 @ 50 Degrees = 42,000 Chlorides

Serial #: 8940 Outside Cobalt Energy LLC Pinnick "A" 1-33X DST Test Number: 1



03-22-14 Spud well at 10:15a.m. Ran 6 joints of new 8 5/8", 23# surface casing. Set @ 262'. Allied cemented with 180 sacks of cement with 3% CC and 2% gel. Plug down @ 5:00p.m. Cement did circulate. (Ticket #54214) Deviation survey 1/4" @ 262'. WOC.

03-23-14 7:00a.m., @ 2174'. Drilling ahead.

03-24-14 7:00a.m., @ 2174'. Drilling ahead. Driller's Anhydrite: 2164-2200'

03-25-14 7:00a.m., @ 2945'. Drilling ahead.

03-26-14 7:00a.m., @ 3425'. Drilling ahead.

03-27-14 7:00a.m., @ 3973'. Drilling ahead.

03-28-14 7:00A.M., @ 4062'. Tripping in hole with bit after DST #1. RTD 4150', LTD 4148'. Pioneer Energy Services logged well with a Dual Induction & Neutron-Density log. The logging was completed at 10:00p.m. on 03-28-14.

03-29-14 Plugged well with 220 sacks of 60/40 Poz, 4% gel, 1/2# flo-seal, 1st plug @ 2200' w/25sx, 2nd plug @ 1273' w/10sx, 3rd plug @ 300' w/4bsx, 4th plug @ 40' w/10sx, 30sx for rat hole & 15sx for mouse hole. Cemented by Allied (ticket #61331), job complete @ 8:30am on 03-29-14.