

Robert D. Hendrix

Petroleum Geologist

GEOLOGIST'S REPORT

DRILLING TIME AND SAMPLE LOG

COMPANY **Murfin Drilling Co. Inc.**

LEASE **Walter #6-1**

FIELD **N/A**

LOCATION **13207ml & 2270'el**

SIC **1** TWSP **1s** RQE **36w**

COUNTY **Rawlins** STATE **Kansas**

CONTRACTOR **Murfin Drilling Co. Inc. Rig #2**

SPUD **11/21/2013** COMP **12/13/2013**

RTD **4480'** LTD **4436'**

MUD UP **3250'** TYPE MUD **Chemical**

SAMPLES SAVED FROM **3480'** TO **11D**

DRILLING TIME KEPT FROM **3480'** TO **11D**

SAMPLES EXAMINED FROM **3480'** TO **11D**

GEOLOGICAL SUPERVISION FROM **3700'**

GEOLOGIST ON WELL **Robert D. Hendrix**

FORMATION TOPS

ANHYDRITE

NEVA

FORAKER

TOPEKA

OREAD

LANSING

STARK

BKC

ELEVATIONS

KB **3163'**

DF _____

GL **3152'**

Measurements Are All From **Kelly Bushing**

CASING

CONDUCTOR

SURFACE **8-5/8" at 255'**

PRODUCTION **5-1/2" @ 4430'**

ELECTRICAL SURVEYS

Powered by: **Energy Services**

Powered by: **Production Services**

Powered by: **Production Services**

Powered by: **Production Services**

Powered by: **Production Services**

Powered by: **Production Services**

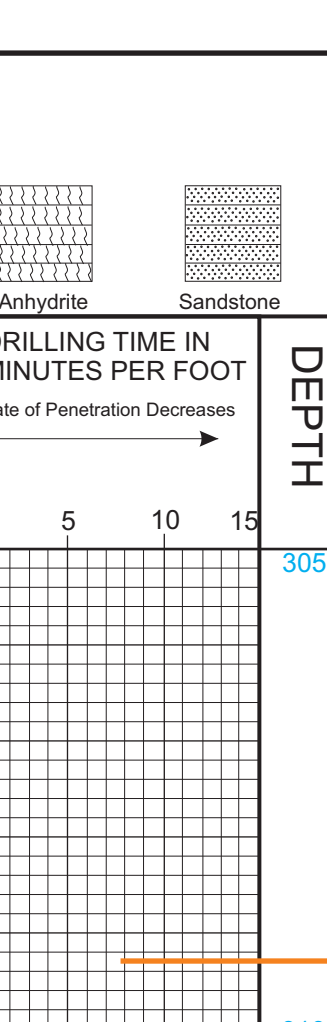
Powered by: **Production Services**

Powered by: **Production Services**

Powered by: **Production Services**

Powered by: **Production Services**

API# 15-153-20967



REMARKS: The well was drilled with a PDC bit to TD. I caught samples at every 20' interval which made descriptions an their correlation to drill time somewhat less precise than normally would be achieved. Due to lack of character on drill time I was unable to make calls on the Topeka through Stark. All shows were noted and should be further tested.

LEGEND

