



DRILL STEM TEST REPORT

Prepared For: **Carrie Exploration**

210 West 22nd Hays Kansas
67601

ATTN: Steve Reed

Cemetery C-2

28-19s-10w-Rice

Start Date: 2014.03.21 @ 12:21:00

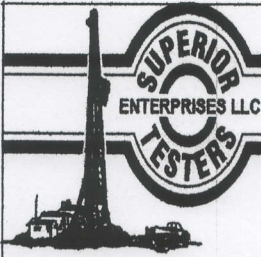
End Date: 2014.03.21 @ 19:00:30

Job Ticket #: 18304 DST #: 1

Superior Testers Enterprises LLC
PO Box 138 Great Bend KS 67530
1-800-792-6902

Printed: 2014.03.21 @ 08:23:43

Carrie Exploration
28-19s-10w-Rice
Cemetery C-2
DST # 1
Arbuckle
2014.03.21



DRILL STEM TEST REPORT

Carrie Exploration
 210 West 22nd Hays Kansas
 67601
 ATTN: Steve Reed

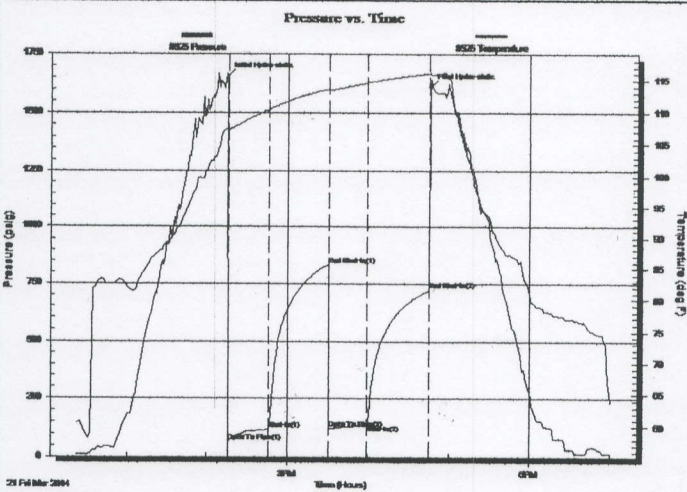
28-19s-10w-Rice
Cemetery C-2
 Job Ticket: 18304 **DST#: 1**
 Test Start: 2014.03.21 @ 12:21:00

GENERAL INFORMATION:

Formation: **Arbuckle**
 Deviated: No Whipstock: ft (KB)
 Time Tool Opened: 14:16:00
 Time Test Ended: 19:00:30
 Interval: **3235.00 ft (KB) To 3290.00 ft (KB) (TVD)**
 Total Depth: 3290.00 ft (KB) (TVD)
 Hole Diameter: 7.88 inches Hole Condition: Fair
 Test Type: Conventional Bottom Hole (Initial)
 Tester: Dustin Ellis
 Unit No: 3315-Great Bend-46
 Reference Elevations: 1775.00 ft (KB)
 1768.00 ft (CF)
 KB to GR/CF: 7.00 ft

Serial #: 8525 **Outside**
 Press@RunDepth: 723.78 psig @ 3285.64 ft (KB) Capacity: 5000.00 psig
 Start Date: 2014.03.21 End Date: 2014.03.21 Last Calib.: 2014.03.21
 Start Time: 12:21:00 End Time: 19:00:30 Time On Btm: 2014.03.21 @ 14:15:30
 Time Off Btm: 2014.03.21 @ 16:46:00

TEST COMMENT: 1st Open 30 minutes Good building blow built to the bottom of a 5 gallon bucket of water in 9 minutes.
 1st Shut in 45 minutes Yes blow back
 2nd Open 30 minutes Strong building blow blew off bottom bucket in 2 minutes.
 2nd Shut in 45 minutes No blow back



PRESSURE SUMMARY

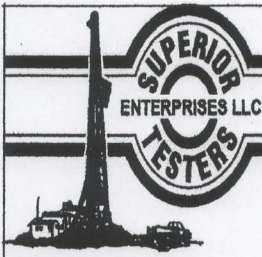
Time (Min.)	Pressure (psig)	Temp (deg F)	Annotation
0	1655.85	107.65	Initial Hydro-static
1	64.13	107.30	Open To Flow (1)
31	117.65	110.48	Shut-In(1)
76	834.58	113.62	End Shut-In(1)
76	124.94	113.40	Open To Flow (2)
104	139.62	114.56	Shut-In(2)
150	723.78	116.08	End Shut-In(2)
151	1606.37	116.21	Final Hydro-static

Recovery

Length (ft)	Description	Volume (bbl)
183.00	Gassy oil cut mud	1.27
0.00	Gas 50% Oil 40% Mud 10%	0.00
61.00	Clean gassy oil 100%	0.86
0.00	836 Gas in pipe.	0.00
0.00	Gravity of oil 44 corrected	0.00

Gas Rates

	Choke (inches)	Pressure (psig)	Gas Rate (Mcf/d)



DRILL STEM TEST REPORT

TOOL DIAGRAM

Carrie Exploration
 210 West 22nd Hays Kansas
 67601
 ATTN: Steve Reed

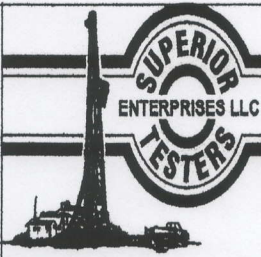
28-19s-10w-Rice
Cemetery C-2
 Job Ticket: 18304 **DST#: 1**
 Test Start: 2014.03.21 @ 12:21:00

Tool Information

Drill Pipe:	Length: 3085.00 ft	Diameter: 3.80 inches	Volume: 43.27 bbl	Tool Weight: 2000.00 lb
Heavy Wt. Pipe:	Length: 0.00 ft	Diameter: 0.00 inches	Volume: 0.00 bbl	Weight set on Packer: 20000.00 lb
Drill Collar:	Length: 142.66 ft	Diameter: 2.25 inches	Volume: 0.70 bbl	Weight to Pull Loose: 55000.00 lb
			<u>Total Volume: 43.97 bbl</u>	Tool Chased 1.00 ft
Drill Pipe Above KB:	20.66 ft			String Weight: Initial 51000.00 lb
Depth to Top Packer:	3235.00 ft			Final 51000.00 lb
Depth to Bottom Packer:	ft			
Interval between Packers:	55.64 ft			
Tool Length:	83.64 ft			
Number of Packers:	2	Diameter: 6.75 inches		
Tool Comments:				

Tool Description	Length (ft)	Serial No.	Position	Depth (ft)	Accum. Lengths
Shut In Tool	5.00			3212.00	
Hydraulic tool	5.00			3217.00	
Jars	6.00			3223.00	
Safety Joint	2.00			3225.00	
Top Packer	5.00			3230.00	
Packer	5.00			3235.00	28.00 Bottom Of Top Packer
Anchor	7.00			3242.00	
Change Over Sub	0.00			3242.00	
Drill Pipe	31.64			3273.64	
Change Over Sub	0.00			3273.64	
Anchor	12.00			3285.64	
Recorder	0.00	8931	Inside	3285.64	
Recorder	0.00	8525	Outside	3285.64	
Bull Plug	5.00			3290.64	55.64 Anchor Tool

Total Tool Length: 83.64



DRILL STEM TEST REPORT

FLUID SUMMARY

Carrie Exploration
 210 West 22nd Hays Kansas
 67601
 ATTN: Steve Reed

28-19s-10w-Rice
Cemetery C-2
 Job Ticket: 18304 **DST#: 1**
 Test Start: 2014.03.21 @ 12:21:00

Mud and Cushion Information

Mud Type: Gel Chem	Cushion Type:	Oil API:	deg API
Mud Weight: 9.00 lb/gal	Cushion Length: ft	Water Salinity:	ppm
Viscosity: 50.00 sec/qt	Cushion Volume: bbl		
Water Loss: in ³	Gas Cushion Type:		
Resistivity: ohm.m	Gas Cushion Pressure: psig		
Salinity: ppm			
Filter Cake: 1.00 inches			

Recovery Information

Recovery Table

Length ft	Description	Volume bbl
183.00	Gassy oil cut mud	1.267
0.00	Gas 50% Oil 40% Mud 10%	0.000
61.00	Clean gassy oil 100%	0.856
0.00	836 Gas in pipe.	0.000
0.00	Gravity of oil 44 corrected	0.000

Total Length: 244.00 ft Total Volume: 2.123 bbl
 Num Fluid Samples: 0 Num Gas Bombs: 0 Serial #:
 Laboratory Name: Laboratory Location:
 Recovery Comments:

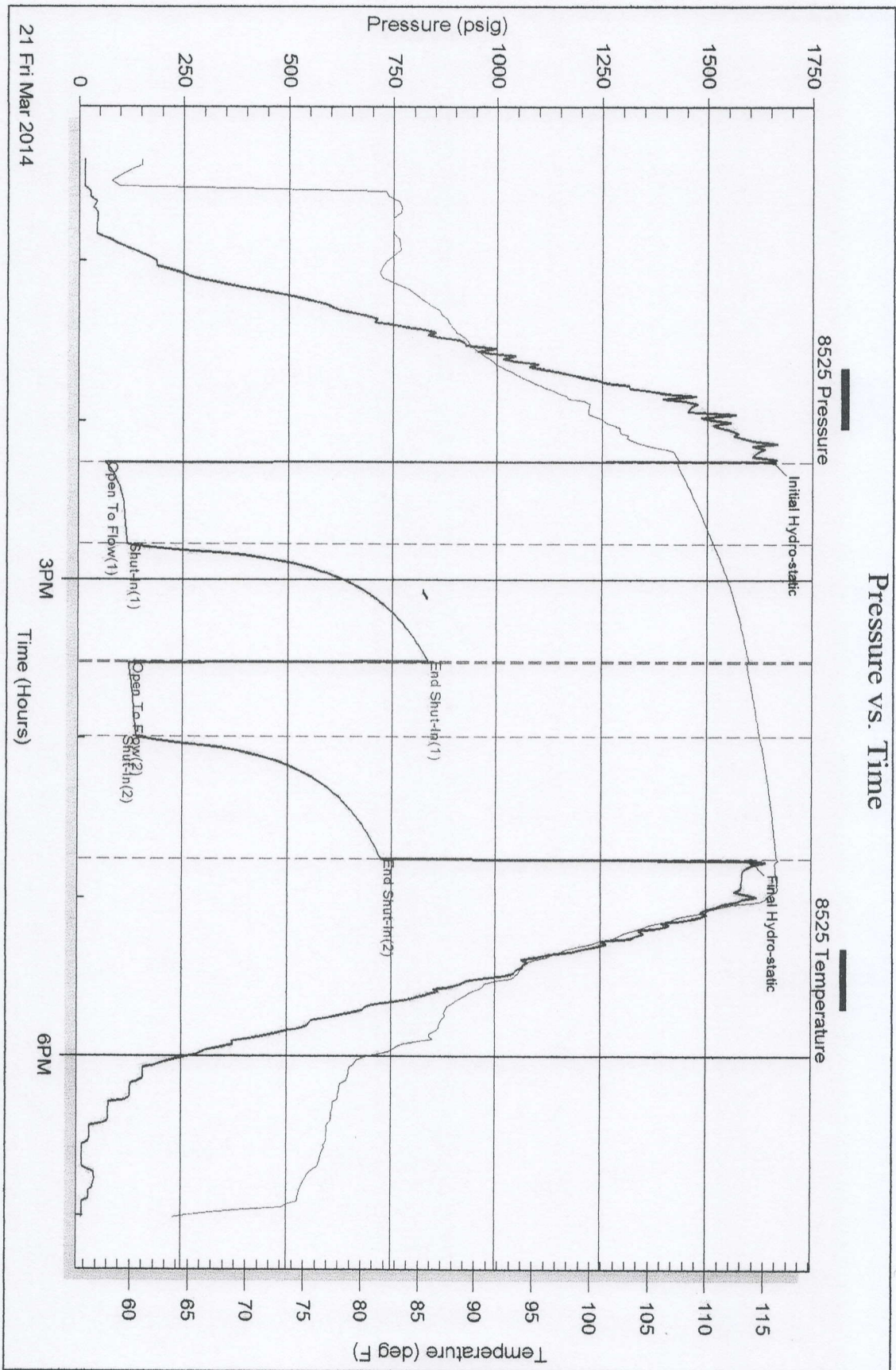
Serial #: 8525

Outside Carrie Exploration

Cemetery C-2

DST Test Number: 1

Pressure vs. Time



Superior Testers Enterprises LLC

Ref. No: 18304

Printed: 2014.03.21 @ 08:23:44

Serial #: 8931

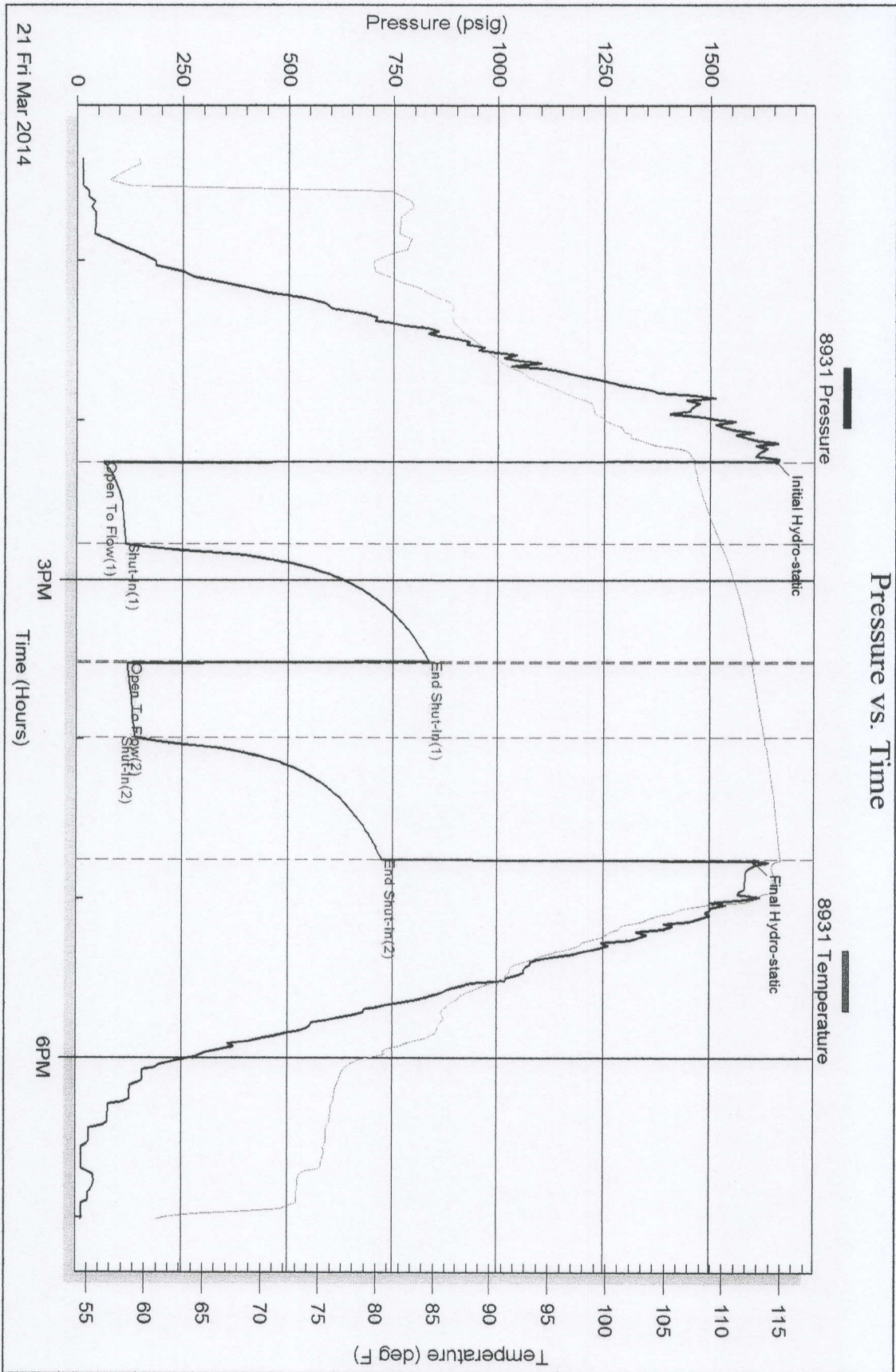
Inside

Carrie Exploration

Cementary C-2

DST Test Number: 1

Pressure vs. Time



Superior Testers Enterprises LLC

Ref. No: 18304

Printed: 2014.03.21 @ 08:23:43