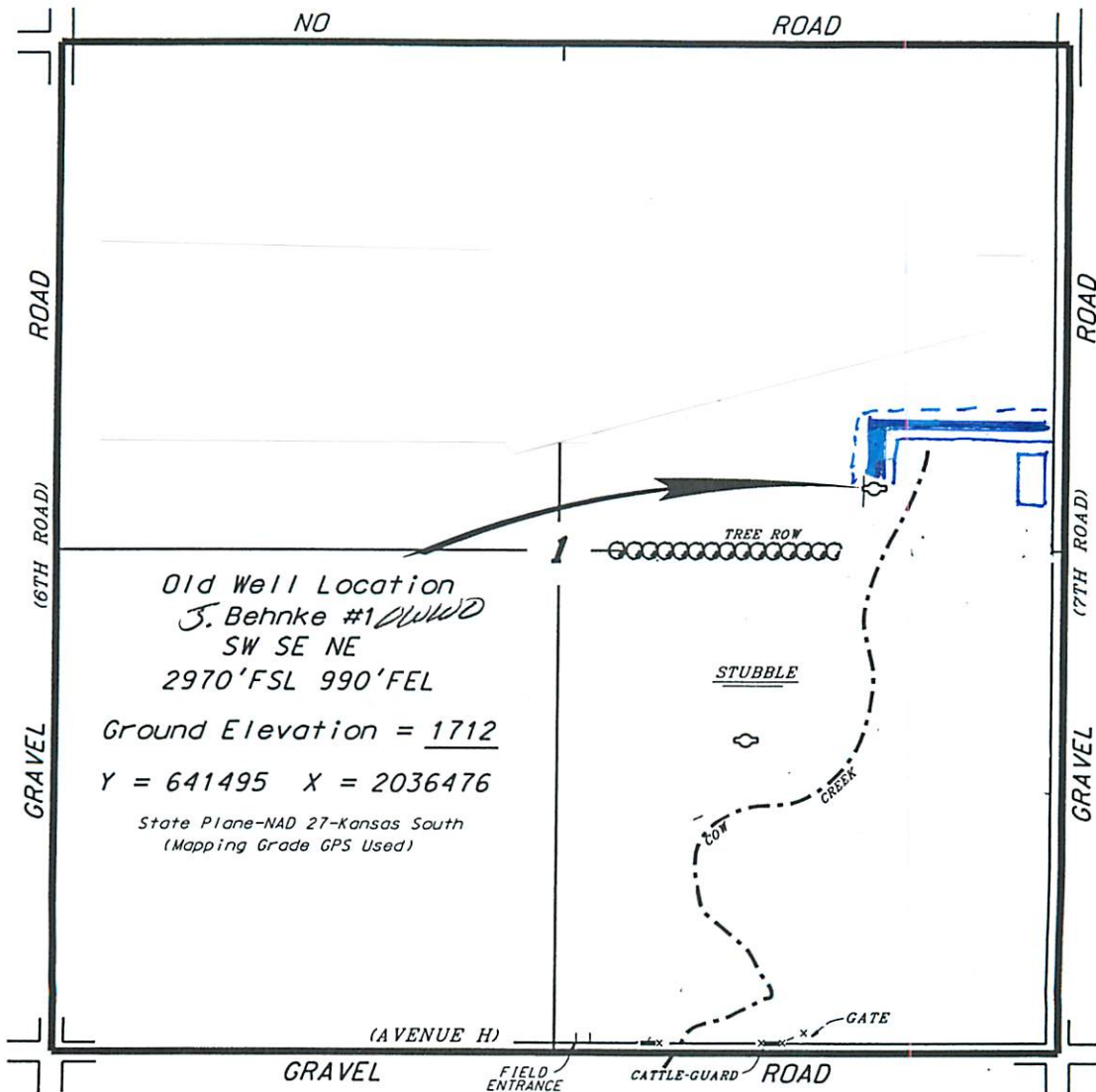


DARRAH OIL COMPANY, LLC
J. BEHNKE LEASE *OWWO*
NE. 1/4, SECTION 1, T19S, R10W
RICE COUNTY, KANSAS

*Ingress and egress to location as shown on this plot is per usage only and may not be legally opened for public use. Contact landowner, tenant and county road department for access.



Old Well Location
J. Behnke #1 *OWWO*
SW SE NE
2970'FSL 990'FEL
Ground Elevation = 1712
Y = 641495 X = 2036476

State Plane-NAD 27-Kansas South
(Mapping Grade GPS Used)

SCALE 1" = 1000'
C.K.S.M.