

THERMAL MULTIGATE  
DECAY LOG  
(TMD)

COMPANY FIELD RENT WELL JOHANSEN FIELD BELUS COUNTY ELLIS STATE KANSAS

COMPANY CITIES SERVICE OIL COMPANY WELL JOHANSEN "B" #1-A FIELD BELUS COUNTY ELLIS STATE KANSAS

Location: 330' W / 510' S OF N/4 CORNER Other Services: CAL

Sec. 34 Twp. 11 S Rge. 17 W

Permanent Datum GROUND LEVEL Elev. 2106' Elev.: K.B. 2114'  
 Log Measured From KELLY BUSHING 8' Ft. Above Perm. Datum D.F. 2111'  
 Drilling Measured From KELLY BUSHING

Date 5-11-84  
 Run No. ONE  
 Depth — Driller 3595'  
 Depth — Welex 3602'  
 Btm. Log Inter. 3602'  
 Top Log Inter. 2850'  
 Type Fluid in Hole AIR  
 Salinity ppm NaCl -  
 Density lb./gal. -  
 Level 3540'  
 Max. Rec. Temp. -  
 Opr. Rig Time 2 1/2 HRS.  
 Equip. / Location 19321 HAYS | 1  
 Recorded by R. SPEISER  
 Witnessed by MR DONALD E. SHELDON

PRELIMINARY  
 PRELIMINARY  
 PRELIMINARY

Borehole Record		Casing & Tubing Record	
Bit	From To	Size	Weight From To
<u>7 7/8"</u>	<u>245'</u>	<u>8 5/8"</u>	<u>0</u> <u>245'</u>
	<u>3595'</u>	<u>4 1/2"</u>	<u>245</u> <u>3595'</u>
	<u>DRILEY 9</u>		
	<u>AIR FILLED BORE HOLE</u>		

API NO.		EQUIPMENT DATA				SOFTWARE VERSION NO.			
		GAMMA RAY		TMD				TMD	
Run No.	ONE	Run No.	ONE						
Tool Model No.	395	Log Type	TMD						
Diameter	1 1/16"	Tool Model No.	395						
Detector Model No.	395	Diameter	1 1/16"						
Type	SCINT.	Detector Model No.	395						
Length	6"	Type - SS	SCINT.						
Distance to N. Source	-	Type - LS	SCINT.						
GENERAL		Source Model No.	A-320-A						
Hoist Truck No.	1932	Serial No.	106330						
Instrument Truck No.	1932	Spacing	-						
Tool Serial No.	106330	Type	0-T						
		Strength	1 x 10 <sup>8</sup> N/sec						

### LOGGING DATA

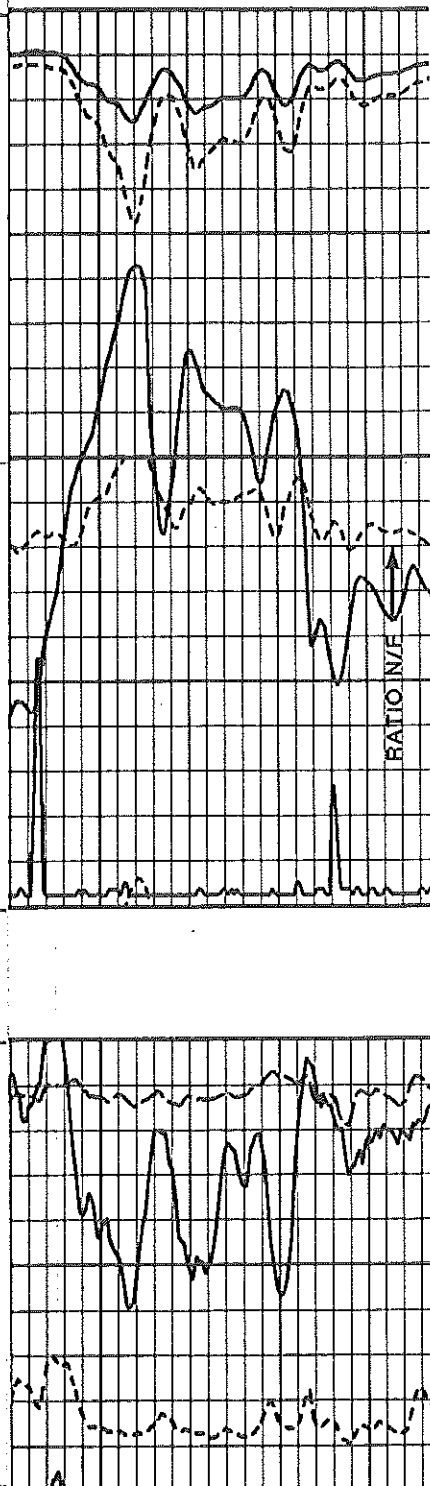
GENERAL		GAMMA RAY			TMD					
Run No.	Depth		Filter Type B or A	Sens. Settings	Zero Div. L or R	API G.R. Units Per Log Div.	Input Filter Type B or A	Output Filter (Σ <sub>PM</sub> only) Y or N	Borehole Option Fresh or Salt	R <sub>N/F</sub> Sensitivity
	From	To								
ONE	3602'	2850'	A	150	L	15	A	Y	SALT	1.0
Reference Literature:										

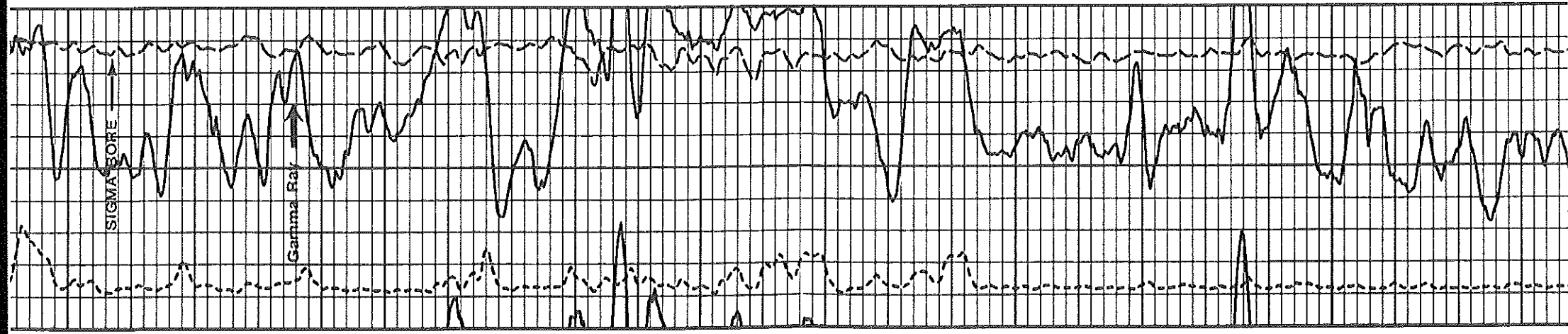
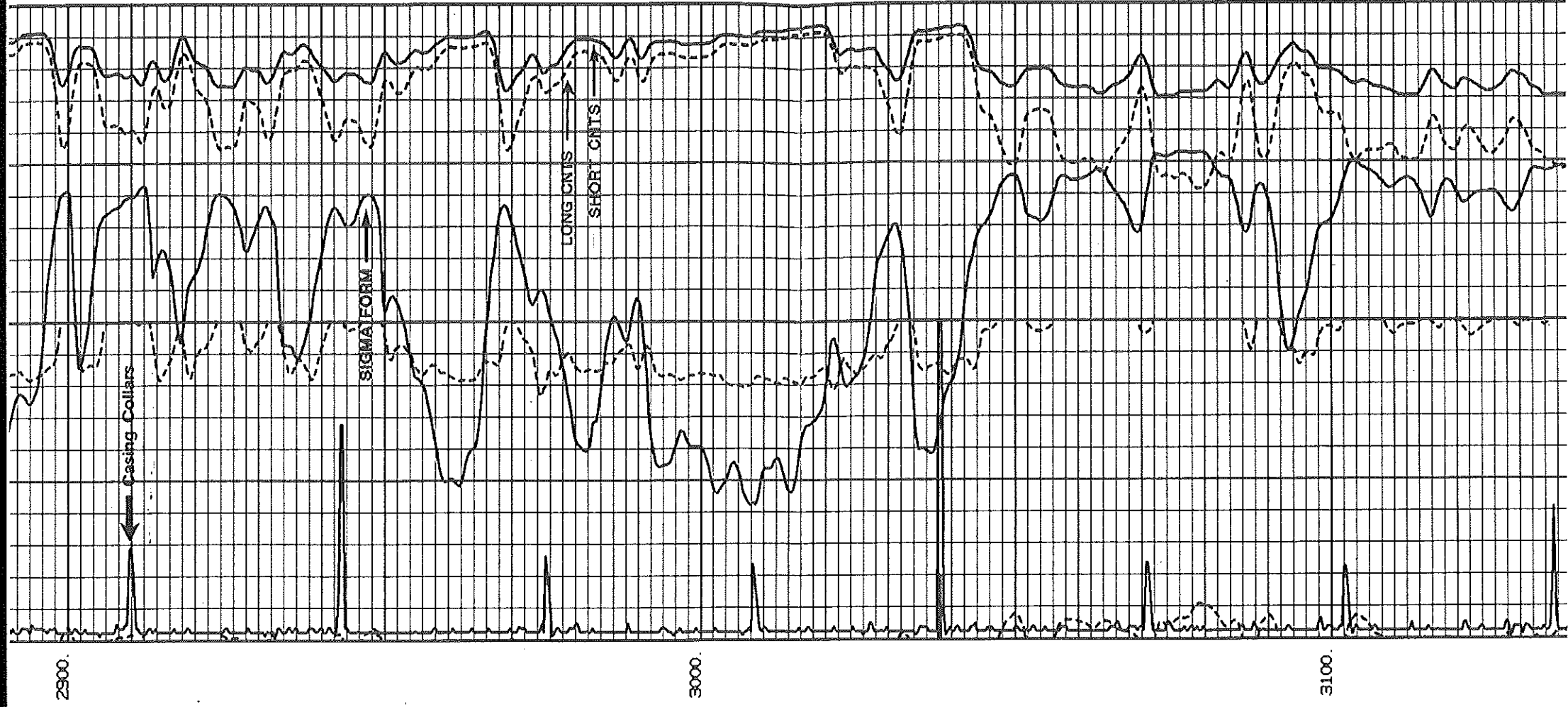
Service Ticket No. VL#169707 Remarks: Log took three runs with generator on while trying to adjust for weak collect locator. Thirty minutes was allowed for between runs 0 but background counts on quality log read high due to activation. Well drilled 09-26-63.

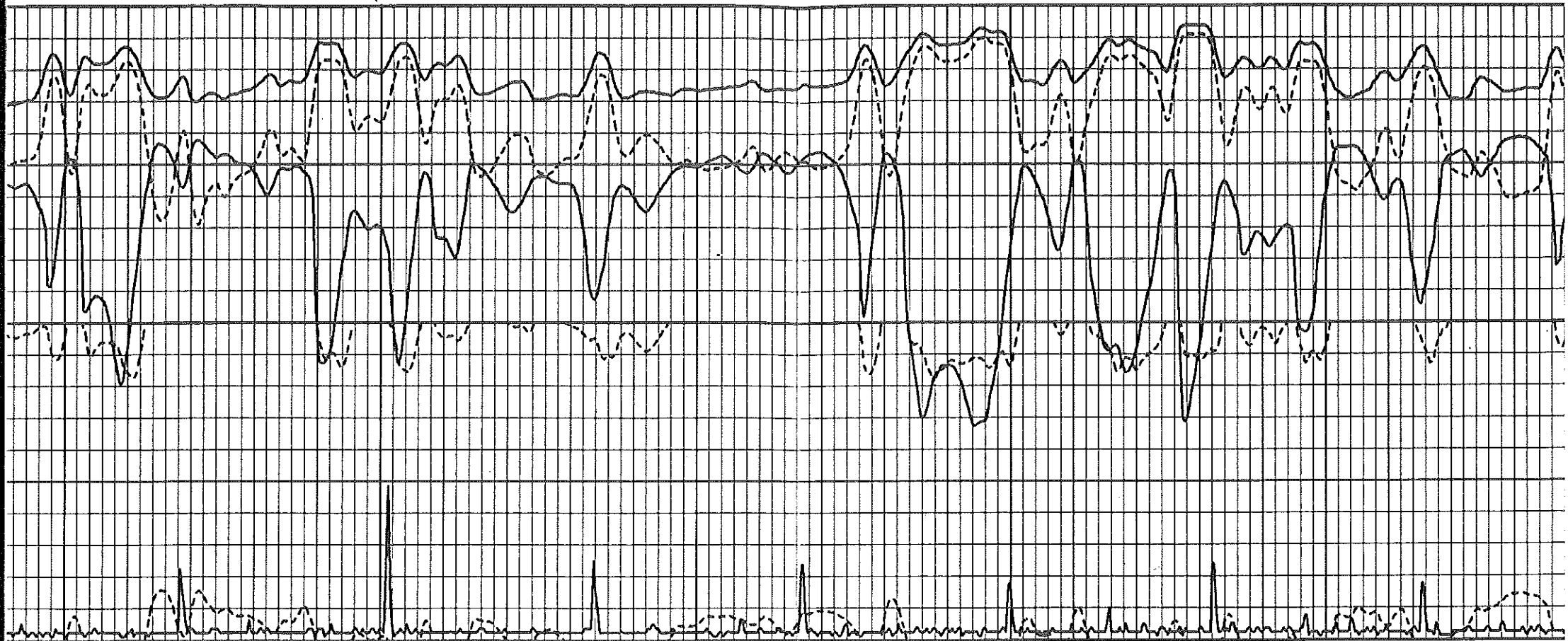
Welex does not guarantee the accuracy of any interpretation of log data, conversion of log data to physical rock parameters, or recommendations which may be given by Welex personnel or which may appear on the log or in any other form. Any use of such data, interpretations, conversions, or recommendations agrees that Welex is not responsible, except where due to gross negligence or willful misconduct, for any loss, damages, or expenses resulting from the use thereof.

### PRIMARY

1.05	Σ <sub>QUAL</sub>	0.55		Σ <sub>CORR</sub>	0
260	Σ <sub>BH-SS</sub>	60	CCL	1000	6000 (G3-6) SS
0	GAMMA	150	R <sub>N/F</sub>	3	12000 (G3-6) LS



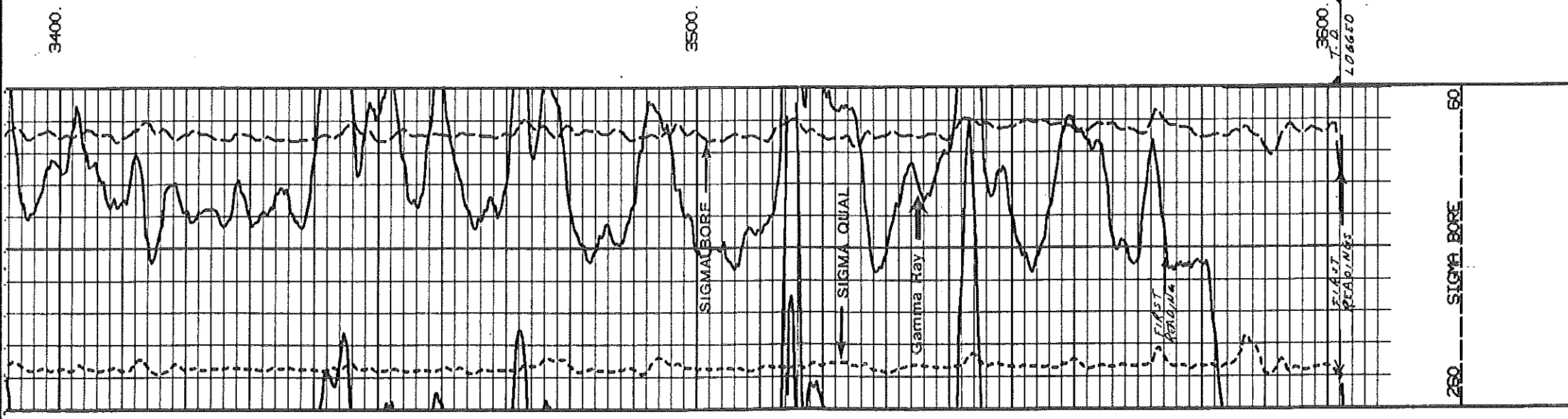
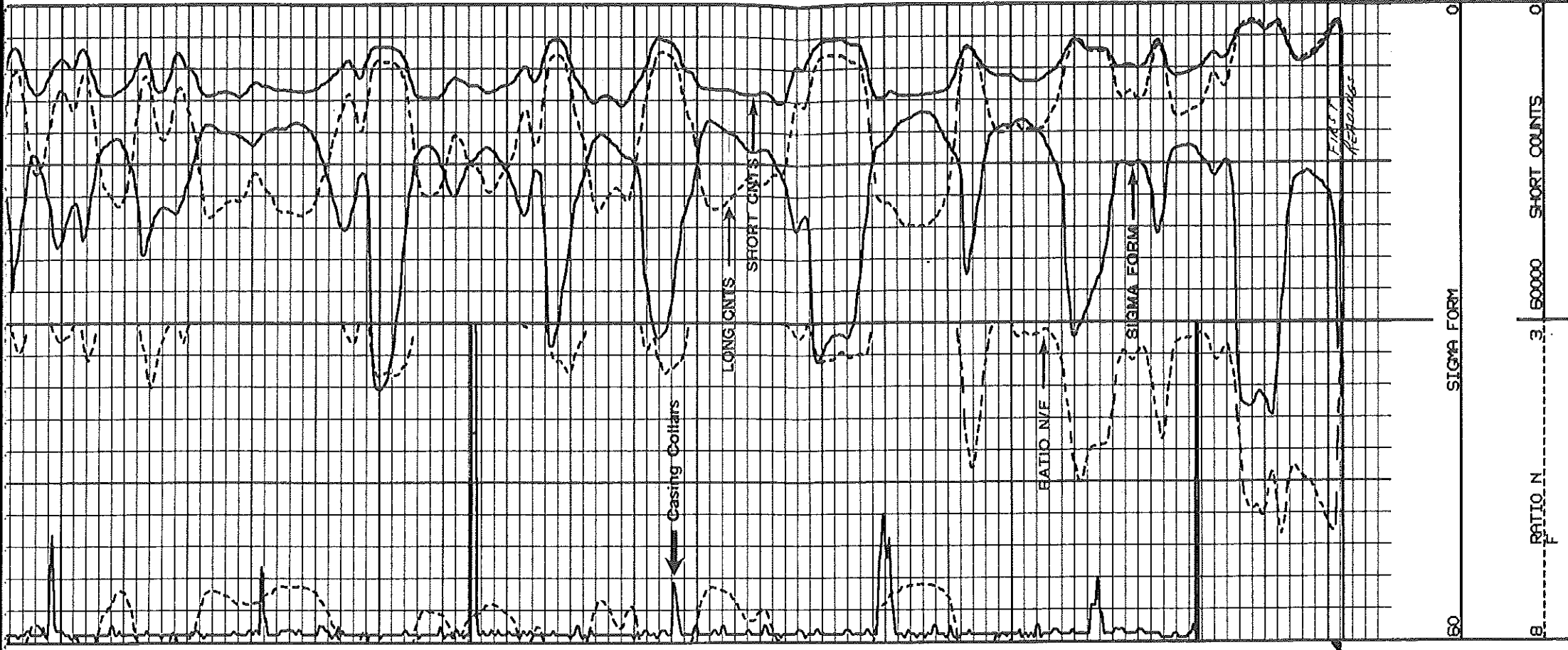




3200.

3300.



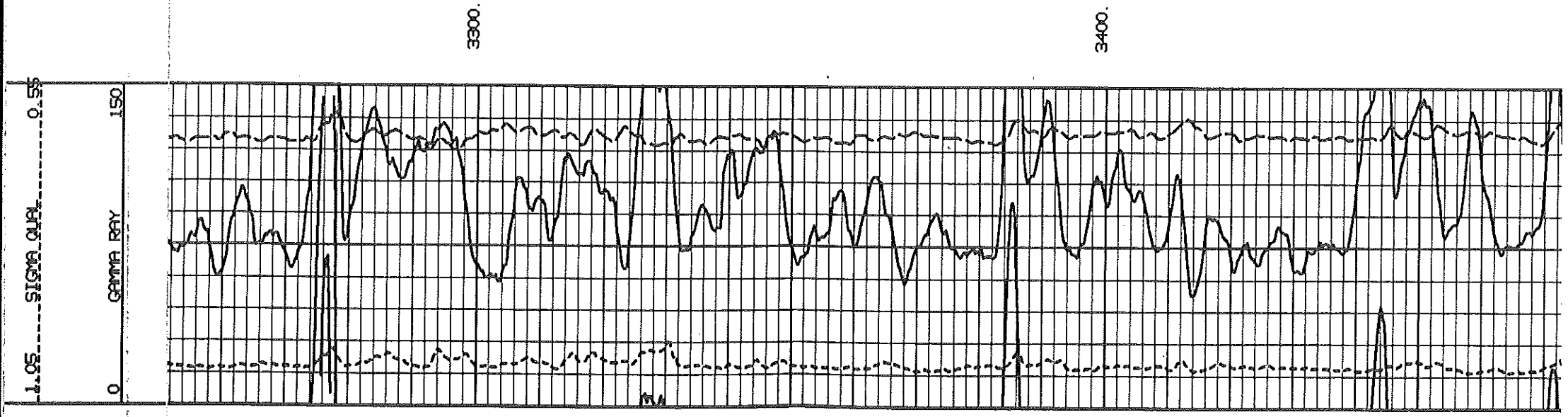


3400.

3500.

3600.

T. S. LOG



3300

3400