



DRILL STEM TEST REPORT

Prepared For: **Evertson Operating Company, Inc.**

4362 E. Hwy 30
P.O. Box 397
Kimball NE, 69145

ATTN: Steve Schindler

Gilsdorf #31-7

77s/12e/Pottawatomie

Start Date: 2013.12.07 @ 13:40:00

End Date: 2013.12.07 @ 21:45:30

Job Ticket #: 18609 DST #: 3

Superior Testers Enterprises LLC
PO Box 138 Great Bend KS 67530
1-800-792-6902

Printed: 2013.12.07 @ 22:02:12



DRILL STEM TEST REPORT

Evertson Operating Company, Inc.

7/7s/12e/Pottawatomie

4362 E. Hwy 30
 P.O. Box 397
 Kimball NE, 69145
 ATTN: Steve Schindler

Gilsdorf #31-7

Job Ticket: 18609

DST#: 3

Test Start: 2013.12.07 @ 13:40:00

GENERAL INFORMATION:

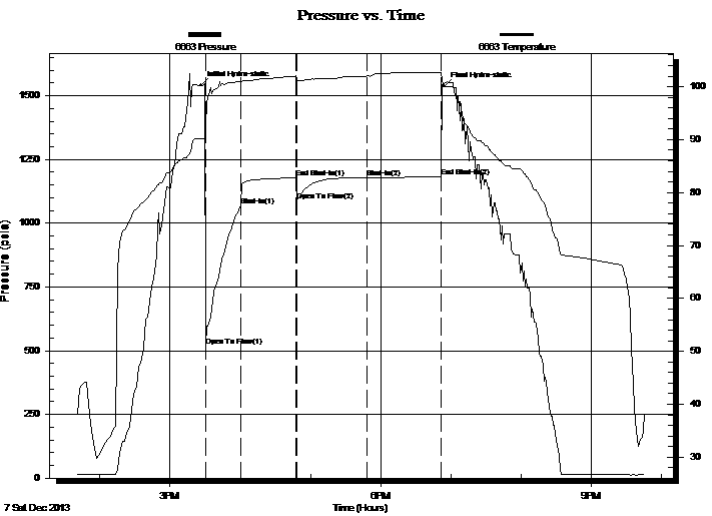
Formation: **Simpson Sand**
 Deviated: No Whipstock: ft (KB)
 Time Tool Opened: 15:30:30
 Time Test Ended: 21:45:30
 Interval: **3193.00 ft (KB) To 3211.00 ft (KB) (TVD)**
 Total Depth: 3211.00 ft (KB) (TVD)
 Hole Diameter: 7.88 inches Hole Condition: Poor
 Test Type: Conventional Bottom Hole (Initial)
 Tester: Shane Konzem
 Unit No: 3330/400/Great Bend
 Reference Elevations: 1323.00 ft (KB)
 1314.00 ft (CF)
 KB to GR/CF: 9.00 ft

Serial #: 6663

Inside

Press @ Run Depth: 1179.28 psia @ 3207.00 ft (KB) Capacity: 5000.00 psia
 Start Date: 2013.12.07 End Date: 2013.12.07 Last Calib.: 2013.12.07
 Start Time: 13:40:00 End Time: 21:45:30 Time On Btm: 2013.12.07 @ 15:26:30
 Time Off Btm: 2013.12.07 @ 18:54:00

TEST COMMENT: 1st Open/ 30 Minutes. Strong blow built to bottom of 5 gallon bucket in 40 seconds.
 1st Shut In/ 45 Minutes. No blow back.
 2nd Open/ 60 Minutes. Strong blow built to bottom of 5 gallon bucket in 40 seconds. BLow died in 30 minutes.
 2nd Shut In/ 60 Minutes. No blow back.



PRESSURE SUMMARY

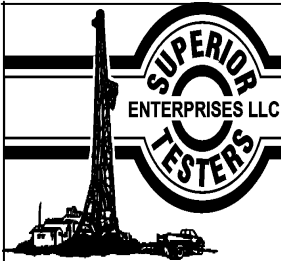
Time (Min.)	Pressure (psia)	Temp (deg F)	Annotation
0	1539.93	90.24	Initial Hydro-static
4	516.92	92.73	Open To Flow (1)
34	1069.24	100.96	Shut-In(1)
81	1177.62	102.01	End Shut-In(1)
82	1088.75	101.51	Open To Flow (2)
142	1179.28	102.01	Shut-In(2)
206	1180.48	102.68	End Shut-In(2)
208	1537.33	100.33	Final Hydro-static

Recovery

Length (ft)	Description	Volume (bbl)
189.00	25% mud, cut 75% w ater.	0.93
2142.00	100% w ater.	29.21
0.00	Chloride recov 7000 ppm	0.00
0.00	resist recov, .21 at 40 degrees.	0.00

Gas Rates

	Choke (inches)	Pressure (psia)	Gas Rate (Mcf/d)



DRILL STEM TEST REPORT

Evertson Operating Company, Inc.

7/7s/12e/Pottawatomie

4362 E. Hwy 30
 P.O. Box 397
 Kimball NE, 69145
 ATTN: Steve Schindler

Gilsdorf #31-7

Job Ticket: 18609

DST#: 3

Test Start: 2013.12.07 @ 13:40:00

GENERAL INFORMATION:

Formation: **Simpson Sand**

Deviated: No Whipstock: ft (KB)

Time Tool Opened: 15:30:30

Time Test Ended: 21:45:30

Test Type: Conventional Bottom Hole (Initial)

Tester: Shane Konzem

Unit No: 3330/400/Great Bend

Interval: 3193.00 ft (KB) To 3211.00 ft (KB) (TVD)

Reference Elevations: 1323.00 ft (KB)

Total Depth: 3211.00 ft (KB) (TVD)

1314.00 ft (CF)

Hole Diameter: 7.88 inches Hole Condition: Poor

KB to GR/CF: 9.00 ft

Serial #: 6651 Outside

Press @ Run Depth: 1182.11 psia @ 3208.00 ft (KB)

Capacity: 5000.00 psia

Start Date: 2013.12.07

End Date: 2013.12.07

Last Calib.: 2013.12.07

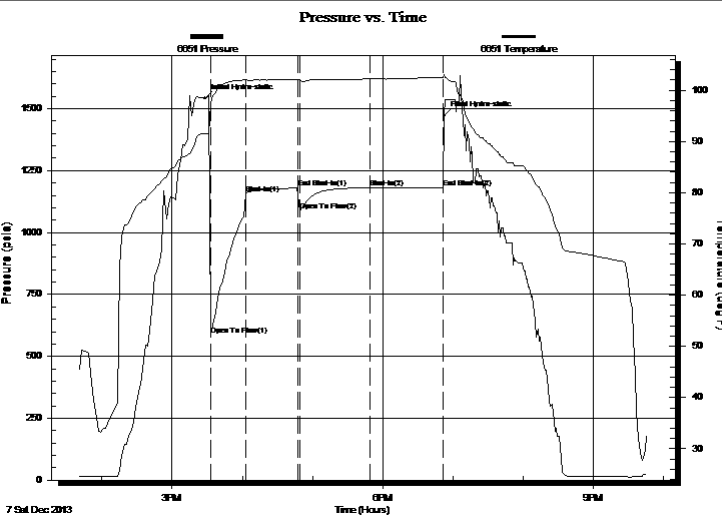
Start Time: 13:40:00

End Time: 21:46:00

Time On Btm: 2013.12.07 @ 15:28:00

Time Off Btm: 2013.12.07 @ 18:52:30

TEST COMMENT: 1st Open/ 30 Minutes. Strong blow built to bottom of 5 gallon bucket in 40 seconds.
 1st Shut In/ 45 Minutes. No blow back.
 2nd Open/ 60 Minutes. Strong blow built to bottom of 5 gallon bucket in 40 seconds. BLow died in 30 minutes.
 2nd Shut In/ 60 Minutes. No blow back.



PRESSURE SUMMARY

Time (Min.)	Pressure (psia)	Temp (deg F)	Annotation
0	1541.73	91.59	Initial Hydro-static
5	587.80	97.34	Open To Flow (1)
35	1156.23	102.01	Shut-In(1)
79	1179.10	102.07	End Shut-In(1)
81	1087.47	102.03	Open To Flow (2)
141	1180.85	102.23	Shut-In(2)
204	1182.11	102.53	End Shut-In(2)
205	1471.89	103.11	Final Hydro-static

Recovery

Length (ft)	Description	Volume (bbl)
189.00	25% mud, cut 75% w ater.	0.93
2142.00	100% w ater.	29.21
0.00	Chloride recov 7000 ppm	0.00
0.00	resist recov, .21 at 40 degrees.	0.00

Gas Rates

	Choke (inches)	Pressure (psia)	Gas Rate (Mcf/d)



DRILL STEM TEST REPORT

TOOL DIAGRAM

Evertson Operating Company, Inc.

7/7s/12e/Pottawatomie

4362 E. Hwy 30
 P.O. Box 397
 Kimball NE, 69145
 ATTN: Steve Schindler

Gilsdorf #31-7

Job Ticket: 18609

DST#: 3

Test Start: 2013.12.07 @ 13:40:00

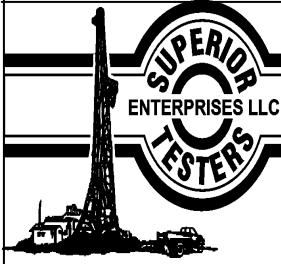
Tool Information

Drill Pipe:	Length: 2910.00 ft	Diameter: 3.80 inches	Volume: 40.82 bbl	Tool Weight: 2000.00 lb
Heavy Wt. Pipe:	Length: 0.00 ft	Diameter: 0.00 inches	Volume: 0.00 bbl	Weight set on Packer: 25000.00 lb
Drill Collar:	Length: 280.33 ft	Diameter: 2.25 inches	Volume: 1.38 bbl	Weight to Pull Loose: 66000.00 lb
			<u>Total Volume: 42.20 bbl</u>	Tool Chased 8.00 ft
Drill Pipe Above KB:	26.33 ft			String Weight: Initial 54000.00 lb
Depth to Top Packer:	3193.00 ft			Final 58000.00 lb
Depth to Bottom Packer:	ft			
Interval between Packers:	18.00 ft			
Tool Length:	47.00 ft			
Number of Packers:	2	Diameter: 6.75 inches		

Tool Comments:

Tool Description	Length (ft)	Serial No.	Position	Depth (ft)	Accum. Lengths
Change Over Sub	1.00			3165.00	
Shut-In Tool	5.00			3170.00	
Hydroic Tool	5.00			3175.00	
Jars	6.00			3181.00	
Safety Joint	2.00			3183.00	
Packer	5.00			3188.00	29.00 Bottom Of Top Packer
Packer	5.00			3193.00	
Perforations	13.00			3206.00	
Recorder	1.00	6663	Inside	3207.00	
Recorder	1.00	6651	Outside	3208.00	
Bullnose	3.00			3211.00	18.00 Bottom Packers & Anchor

Total Tool Length: 47.00



DRILL STEM TEST REPORT

FLUID SUMMARY

Evertson Operating Company, Inc.

7/7s/12e/Pottawatomie

4362 E. Hwy y 30
P.O. Box 397
Kimball NE, 69145
ATTN: Steve Schindler

Gilsdorf #31-7

Job Ticket: 18609

DST#: 3

Test Start: 2013.12.07 @ 13:40:00

Mud and Cushion Information

Mud Type: Gel Chem
Mud Weight: 9.00 lb/gal
Viscosity: 55.00 sec/qt
Water Loss: 6.60 in³
Resistivity: ohm.m
Salinity: 300.00 ppm
Filter Cake: 2.00 inches

Cushion Type:
Cushion Length: ft
Cushion Volume: bbl
Gas Cushion Type:
Gas Cushion Pressure: psia

Oil API: deg API
Water Salinity: ppm

Recovery Information

Recovery Table

Length ft	Description	Volume bbl
189.00	25% mud, cut 75% w ater.	0.929
2142.00	100% w ater.	29.215
0.00	Chloride recov 7000 ppm	0.000
0.00	resist recov, .21 at 40 degrees.	0.000

Total Length: 2331.00 ft Total Volume: 30.144 bbl

Num Fluid Samples: 0

Num Gas Bombs: 0

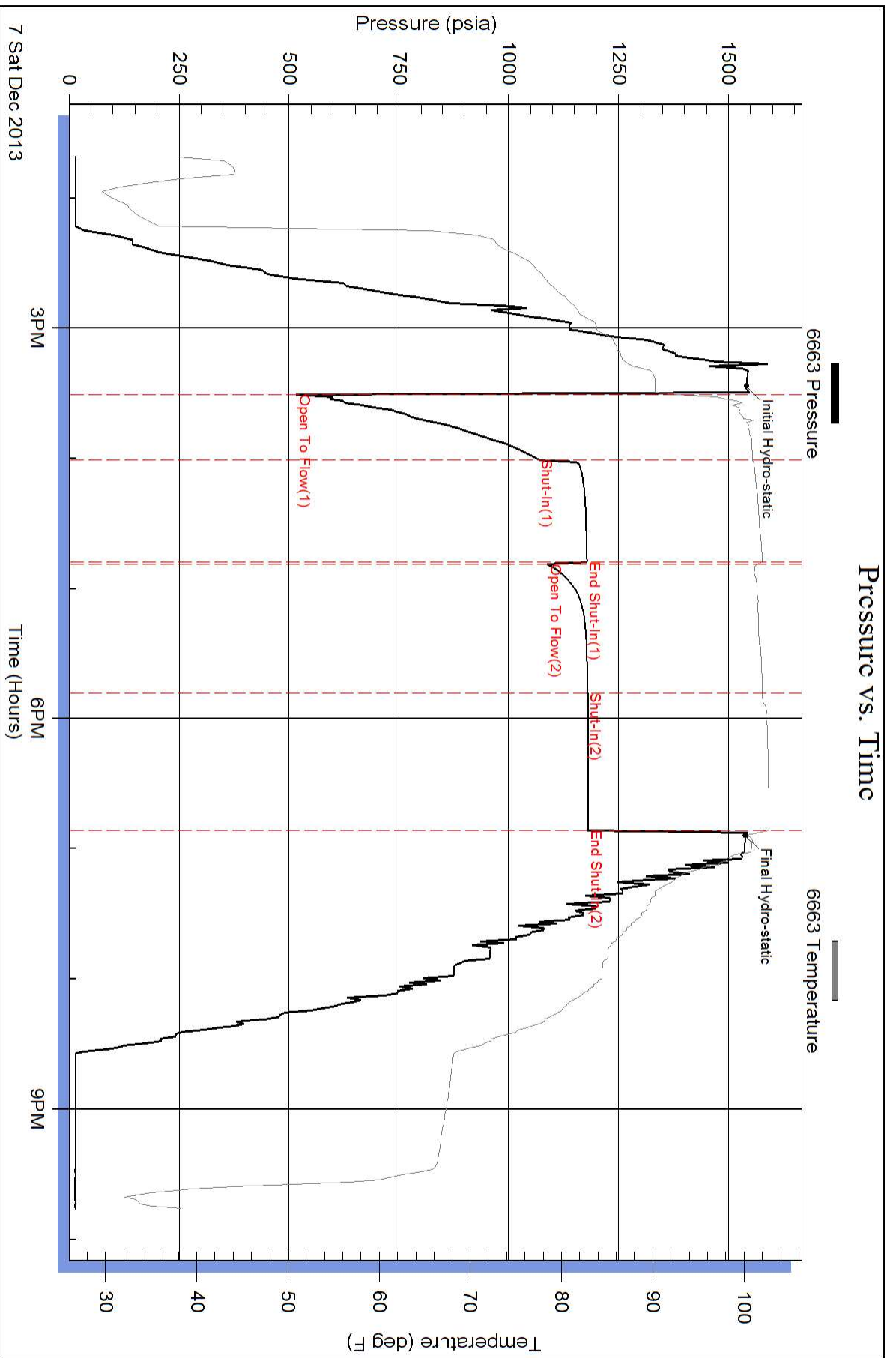
Serial #:

Laboratory Name:

Laboratory Location:

Recovery Comments: We dropped the bar and used the circulating sub per tool pusher.

Pressure vs. Time



Pressure vs. Time

