



DRILL STEM TEST REPORT

Prepared For: **MTM Petroleum Inc.**

PO.Box 391
Kingman KS .67068

ATTN: Jerry A.Smith

Garrison #4

20-29s-7w Kingman,KS

Start Date: 2013.11.26 @ 22:18:19

End Date: 2013.11.27 @ 06:34:19

Job Ticket #: 51784 DST #: 1

Trilobite Testing, Inc

PO Box 362 Hays, KS 67601

ph: 785-625-4778 fax: 785-625-5620

Printed: 2013.11.29 @ 11:25:19



TRILOBITE TESTING, INC

DRILL STEM TEST REPORT

MTM Petroleum Inc.

20-29s-7w Kingman,KS

PO.Box 391
Kingman KS .67068

Garrison #4

Job Ticket: 51784

DST#: 1

ATTN: Jerry A.Smith

Test Start: 2013.11.26 @ 22:18:19

GENERAL INFORMATION:

Formation: **Simpson Sd.**

Deviated: No Whipstock: ft (KB)

Time Tool Opened: 00:30:34

Time Test Ended: 06:34:19

Test Type: Conventional Bottom Hole (Initial)

Tester: Gary Pevoteaux

Unit No: 56

Interval: 4490.00 ft (KB) To 4515.00 ft (KB) (TVD)

Reference Elevations: 1553.00 ft (KB)

Total Depth: 4515.00 ft (KB) (TVD)

1543.00 ft (CF)

Hole Diameter: 7.88 inches Hole Condition: Fair

KB to GR/CF: 10.00 ft

Serial #: 8352 Inside

Press@RunDepth: 1055.09 psig @ 4491.00 ft (KB)

Capacity: 8000.00 psig

Start Date: 2013.11.26

End Date:

2013.11.27

Last Calib.:

2013.11.27

Start Time: 22:18:24

End Time:

06:34:18

Time On Btm:

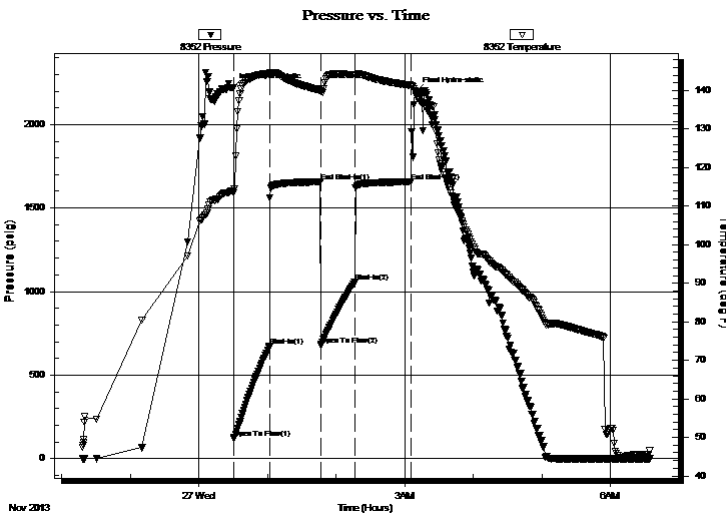
2013.11.27 @ 00:29:34

Time Off Btm:

2013.11.27 @ 03:10:04

TEST COMMENT: IF:Strong blow . B.O.B. in 1 min.
IS:Weak blow . 1 - 3 1/2".
FF:Strong blow . B.O.B. in 1 1/2 mins.
FS:Weak blow . 1 - 2 1/2".

PRESSURE SUMMARY



Time (Min.)	Pressure (psig)	Temp (deg F)	Annotation
0	2219.60	114.05	Initial Hydro-static
1	121.29	113.54	Open To Flow (1)
32	671.05	144.33	Shut-In(1)
77	1657.15	140.04	End Shut-In(1)
78	680.18	139.72	Open To Flow (2)
107	1055.09	144.07	Shut-In(2)
156	1657.17	141.34	End Shut-In(2)
161	2195.04	138.75	Final Hydro-static

Recovery

Length (ft)	Description	Volume (bbl)
1900.00	GCW 4&g 96%w	25.56
250.00	GCMW/ w o specs 7%g 18%m 75%w	3.51
120.00	GOCWM 7%g 1%o 27%w 65%m	1.68
0.00	750 ft.of GIP	0.00

Gas Rates

	Choke (inches)	Pressure (psig)	Gas Rate (Mcf/d)



TRILOBITE TESTING, INC

DRILL STEM TEST REPORT

MTM Petroleum Inc.

20-29s-7w Kingman,KS

PO.Box 391
Kingman KS .67068

Garrison #4

ATTN: Jerry A. Smith

Job Ticket: 51784 DST#: 1
Test Start: 2013.11.26 @ 22:18:19

GENERAL INFORMATION:

Formation: Simpson Sd.

Deviated: No Whipstock: ft (KB)

Time Tool Opened: 00:30:34

Time Test Ended: 06:34:19

Test Type: Conventional Bottom Hole (Initial)

Tester: Gary Pevoteaux

Unit No: 56

Interval: 4490.00 ft (KB) To 4515.00 ft (KB) (TVD)

Total Depth: 4515.00 ft (KB) (TVD)

Hole Diameter: 7.88 inches Hole Condition: Fair

Reference Elevations: 1553.00 ft (KB)

1543.00 ft (CF)

KB to GR/CF: 10.00 ft

Serial #: 8370 Outside

Press@RunDepth: psig @ 4491.00 ft (KB)

Start Date: 2013.11.26

End Date:

Start Time: 22:14:06

End Time:

Capacity: 8000.00 psig

Last Calib.:

Time On Btm:

Time Off Btm:

TEST COMMENT: IF:Strong blow . B.O.B. in 1 min.
IS:Weak blow . 1 - 3 1/2".
FF:Strong blow . B.O.B. in 1 1/2 mins.
FS:Weak blow . 1 - 2 1/2:.

PRESSURE SUMMARY

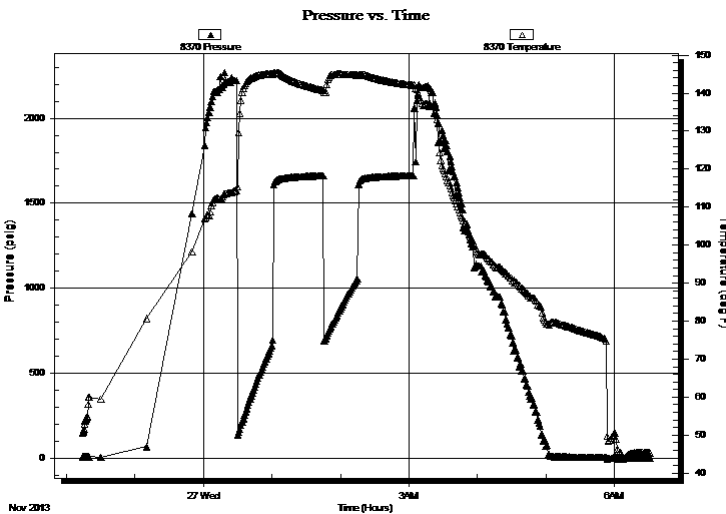


Table with 4 columns: Time (Min.), Pressure (psig), Temp (deg F), Annotation. The table is currently empty.

Recovery

Table with 3 columns: Length (ft), Description, Volume (bbl). Contains 5 rows of recovery data.

Gas Rates

Table with 4 columns: Choke (inches), Pressure (psig), Gas Rate (Mcf/d). The table is currently empty.



**TRILOBITE
TESTING, INC**

DRILL STEM TEST REPORT

TOOL DIAGRAM

MTM Petroleum Inc.

20-29s-7w Kingman,KS

PO.Box 391
Kingman KS .67068

Garrison #4

Job Ticket: 51784

DST#: 1

ATTN: Jerry A.Smith

Test Start: 2013.11.26 @ 22:18:19

Tool Information

Drill Pipe:	Length: 4365.00 ft	Diameter: 3.80 inches	Volume: 61.23 bbl	Tool Weight: 2400.00 lb
Heavy Wt. Pipe:	Length: 0.00 ft	Diameter: 0.00 inches	Volume: 0.00 bbl	Weight set on Packer: 24000.00 lb
Drill Collar:	Length: 120.00 ft	Diameter: 2.25 inches	Volume: 0.59 bbl	Weight to Pull Loose: 93000.00 lb
			<u>Total Volume: 61.82 bbl</u>	Tool Chased 0.00 ft
Drill Pipe Above KB:	18.00 ft			String Weight: Initial 67000.00 lb
Depth to Top Packer:	4490.00 ft			Final 76000.00 lb
Depth to Bottom Packer:	ft			
Interval between Packers:	25.00 ft			
Tool Length:	48.00 ft			
Number of Packers:	2	Diameter: 6.75 inches		

Tool Comments:

Tool Description

Tool Description	Length (ft)	Serial No.	Position	Depth (ft)	Accum. Lengths
C.O. Sub	1.00			4468.00	
Shut in tool	5.00			4473.00	
HMV	5.00			4478.00	
Safety Joint	3.00			4481.00	
Packer	4.00			4485.00	23.00 Bottom Of Top Packer
Packer	5.00			4490.00	
Stubb	1.00			4491.00	
Recorder	0.00	8352	Inside	4491.00	
Recorder	0.00	8370	Outside	4491.00	
Perforations	19.00			4510.00	
Bullnose	5.00			4515.00	25.00 Bottom Packers & Anchor

Total Tool Length: 48.00



**TRILOBITE
TESTING, INC**

DRILL STEM TEST REPORT

FLUID SUMMARY

MTM Petroleum Inc.

20-29s-7w Kingman,KS

PO.Box 391
Kingman KS .67068

Garrison #4

Job Ticket: 51784

DST#: 1

ATTN: Jerry A.Smith

Test Start: 2013.11.26 @ 22:18:19

Mud and Cushion Information

Mud Type: Gel Chem

Cushion Type:

Oil API:

deg API

Mud Weight: 9.00 lb/gal

Cushion Length:

ft

Water Salinity:

81000 ppm

Viscosity: 62.00 sec/qt

Cushion Volume:

bbbl

Water Loss: in³

Gas Cushion Type:

Resistivity: 0.00 ohm.m

Gas Cushion Pressure:

psig

Salinity: 2000.00 ppm

Filter Cake: 0.20 inches

Recovery Information

Recovery Table

Length ft	Description	Volume bbl
1900.00	GCW 4&g 96%w	25.559
250.00	GCMW/ w o specs 7%g 18%m 75%w	3.507
120.00	GOCWM 7%g 1%o 27%w 65%m	1.683
0.00	750 ft.of GIP	0.000

Total Length: 2270.00 ft Total Volume: 30.749 bbl

Num Fluid Samples: 0

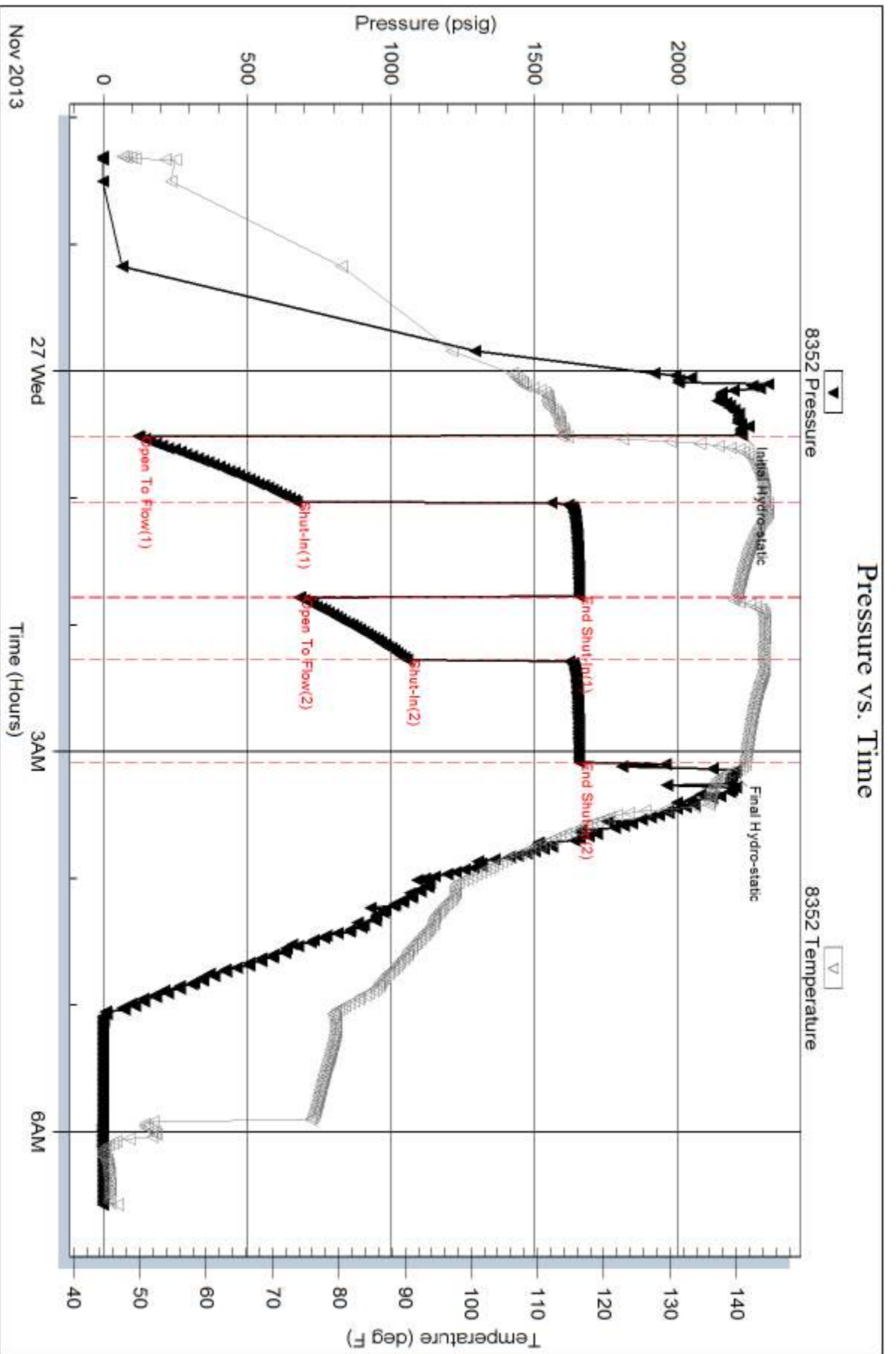
Num Gas Bombs: 0

Serial #: none

Laboratory Name:

Laboratory Location:

Recovery Comments: Rw .16ohms@47deg

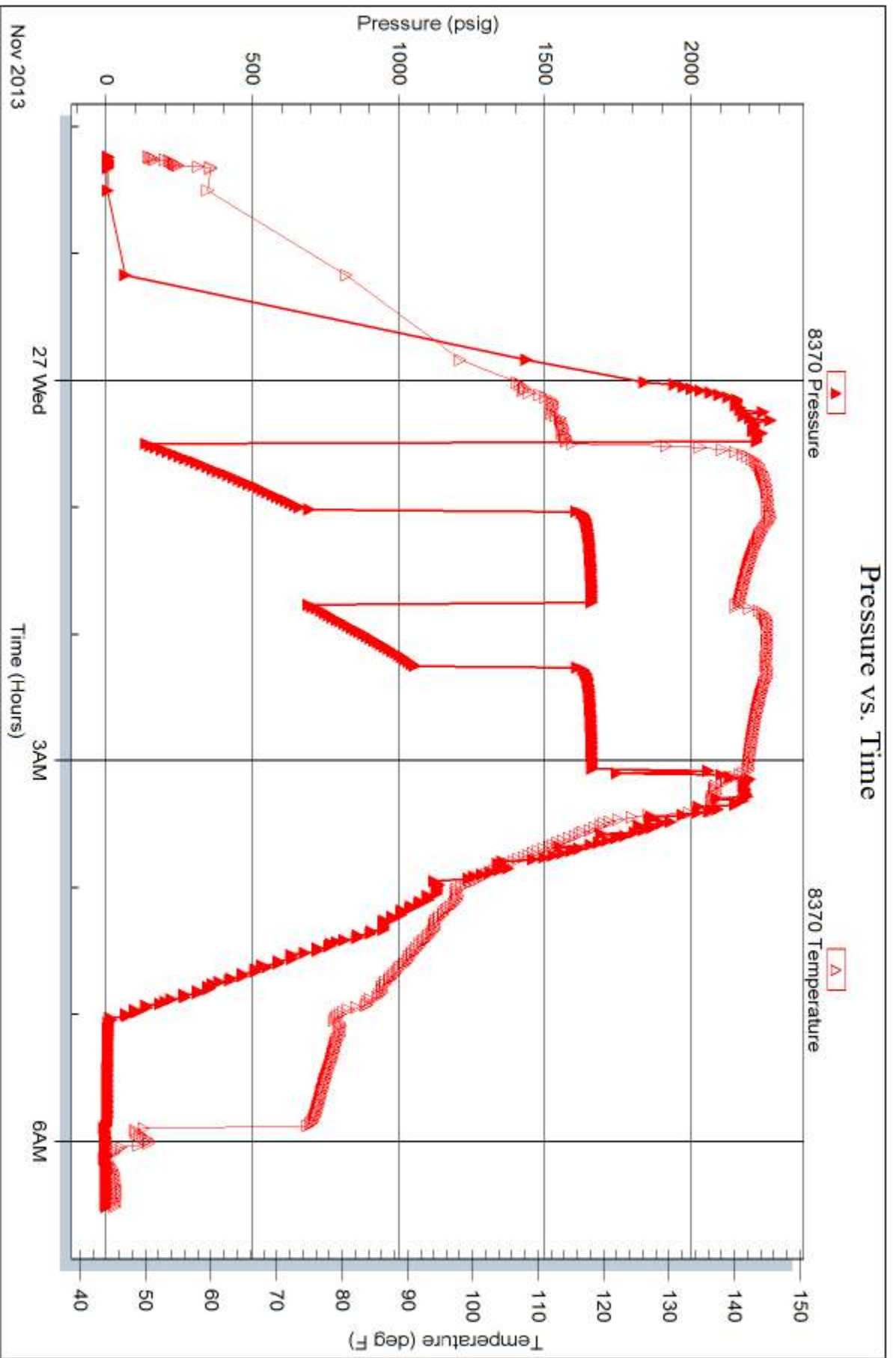


Serial #: 8370

Outside MTM Petroleum Inc.

Garrison #4

DST Test Number: 1





TRILOBITE TESTING INC.

1515 Commerce Parkway • Hays, Kansas 67601

Test Ticket

NO. 51784

Well Name & No. GARRISON #4 Test No. 1 Date 11-26-13
 Company MTM PETROLEUM INC. Elevation 1553 KB 1543 GL
 Address 2370 SOUTH STATE ROAD 14, P.O. Box KINGMAN KS. 67068
 Co. Rep / Geo. JERRY A. SMITH Rig HARDT DRUG. #1
 Location: Sec. 20 Twp. 29S Rge. 7W Co. KINGMAN State KS.

Interval Tested 4490 - 4515' Zone Tested SIMPSON SD.
 Anchor Length 25' Drill Pipe Run 4365' Mud Wt. 9.2
 Top Packer Depth 4485' Drill Collars Run 120' Vis 62
 Bottom Packer Depth 4490' Wt. Pipe Run 0 WL 8.0cc
 Total Depth 4515' Chlorides 2,000 ppm System LCM 2#
 Blow Description IF: Strong blow. B.O.B. in 1 min. ISI: Weak blow. 1-3 1/2".
FF: Strong blow. B.O.B. in 1 1/2 mins. FSI: Weak blow. 1-2 1/2".

Rec	Feet of	%gas	%oil	%water	%mud
750	Gas in pipe				
120	GOCNM	7	1	27	65
250	GCMW / w o specs	7		75	18
1900	GCW	4		96	

Rec Total 2220 Fluid BHT 1410 Gravity N/A API RW 16 @ 47 ° F Chlorides 81,000 ppm
 (A) Initial Hydrostatic 2220 Test 1250 T-On Location 2044
 (B) First Initial Flow 121 Jars _____ T-Started 2218
 (C) First Final Flow 671 Safety Joint 75 T-Open 0030
 (D) Initial Shut-In 1657 Circ Sub _____ T-Pulled 0303
 (E) Second Initial Flow 680 Hourly Standby _____ T-Out 0634
 (F) Second Final Flow 1055 Mileage 1000 155 Comments _____
 (G) Final Shut-In 1657 Sampler _____
 (H) Final Hydrostatic 2195 Straddle _____
 Ruined Shale Packer _____
 Ruined Packer _____
 Extra Copies _____
 Initial Open 30 Shale Packer _____
 Initial Shut-In 45 Extra Packer _____
 Final Flow 30 Extra Recorder _____ Sub Total 0
 Final Shut-In 45 Day Standby _____ Total 1480
 Accessibility _____ MP/DST Disc't _____
 Sub Total 1480

Approved By [Signature] Our Representative [Signature]
 Trilobite Testing Inc. shall not be liable for damaged of any kind of the property or personnel of the one for whom a test is made, or for any loss suffered or sustained, directly or indirectly, through the use of its equipment, or its statements or opinion concerning the results of any test, tools lost or damaged in the hole shall be paid for at cost by the party for whom the test is made.