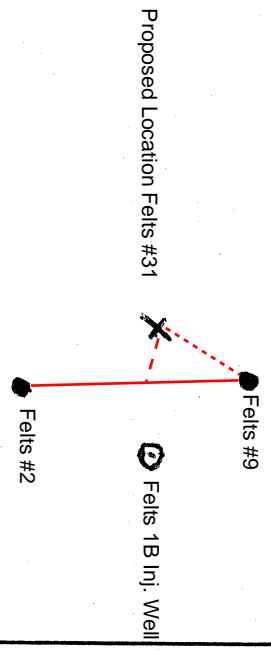


NORTH ↑

# FELTS LEASE: Lot 6 and N 3/4 of lot 7 lying East of River, Less

RR Right of Way; NW/4 SE/4 Lying W of HWY  
169 of Section 30-34S-17E Being 90 Acres MOL



\*Felts #31 Will Utilize Existing Lease Road: No New Roads

- ..... Proposed Electric Line
- - - - Proposed Flow Line
- Existing Flow Line
- Old Railroad Track

