



**TRILOBITE
TESTING, INC.**

DRILL STEM TEST REPORT

Strata Exploration, Inc.
PO Box 401
Fairfield IL, 62837 - 0401
ATTN: Tom Pronold

21-29s-32w Haskell Co. KS

Leonard # 2-21

Job Ticket: 54615

DST#: 2

Test Start: 2014.02.21 @ 09:00:00

GENERAL INFORMATION:

Formation: **St. Louis 'A'**

Deviated: No Whipstock: ft (KB)

Time Tool Opened: 11:25:30

Time Test Ended: 17:29:30

Test Type: Conventional Bottom Hole (Reset)

Tester: Jace McKinney

Unit No: 75

Interval: 5476.00 ft (KB) To 5530.00 ft (KB) (TVD)

Total Depth: 5530.00 ft (KB) (TVD)

Hole Diameter: 7.88 inches Hole Condition: Poor

Reference Elevations: 2919.00 ft (KB)

2908.00 ft (CF)

KB to GR/CF: 11.00 ft

Serial #: 8675 Inside

Press @ Run Depth: 95.76 psig @ 5477.00 ft (KB)

Start Date: 2014.02.21

End Date: 2014.02.21

Start Time: 09:00:15

End Time: 17:29:30

Capacity: 8000.00 psig

Last Calib.: 2014.02.21

Time On Btm: 2014.02.21 @ 11:24:15

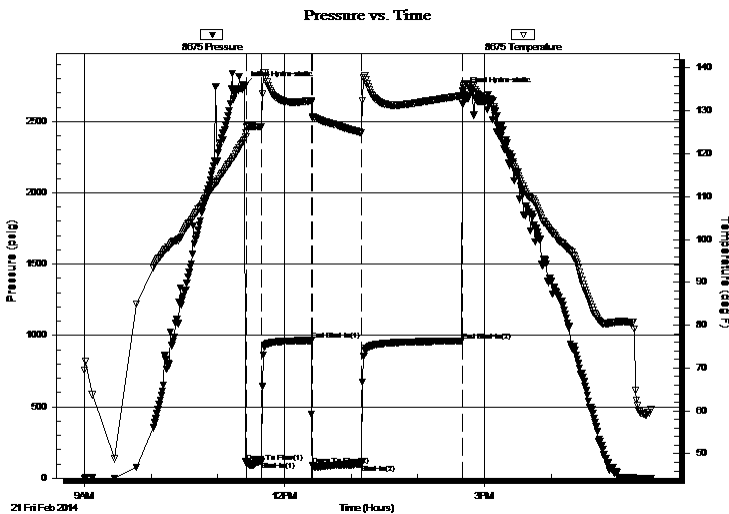
Time Off Btm: 2014.02.21 @ 14:40:45

TEST COMMENT: B.O.B. in 1 min.

Bled off for 10 min. B.O.B. as soon as I closed 2" valve

B.O.B. as soon as i opened, Gas To Service 5 min into

Beld off for 10 min. B.O.B as soon as I closed 2" valve



PRESSURE SUMMARY

Time (Min.)	Pressure (psig)	Temp (deg F)	Annotation
0	2747.93	123.19	Initial Hydro-static
2	108.55	124.88	Open To Flow (1)
15	114.64	126.27	Shut-In(1)
60	964.63	132.37	End Shut-In(1)
61	90.13	128.29	Open To Flow (2)
105	95.76	124.89	Shut-In(2)
196	960.38	133.51	End Shut-In(2)
197	2709.54	135.27	Final Hydro-static

Recovery

Length (ft)	Description	Volume (bbl)
125.00	100% Mud	0.61
0.00	5289 Feet Gas In Pipe	0.00

Gas Rates

	Choke (inches)	Pressure (psig)	Gas Rate (Mcf/d)
First Gas Rate	0.50	20.00	232.05
Last Gas Rate	0.50	30.00	299.51
Max. Gas Rate	0.50	30.00	299.51

* Recovery from multiple tests



**TRILOBITE
TESTING, INC.**

DRILL STEM TEST REPORT

FLUID SUMMARY

Strata Exploration, Inc.

21-29s-32w Haskell Co. KS

PO Box 401
Fairfield IL, 62837 - 0401

Leonard # 2-21

Job Ticket: 54615

DST#: 2

ATTN: Tom Pronold

Test Start: 2014.02.21 @ 09:00:00

Mud and Cushion Information

Mud Type: Gel Chem

Cushion Type:

Oil API:

deg API

Mud Weight: 9.00 lb/gal

Cushion Length:

ft

Water Salinity:

ppm

Viscosity: 51.00 sec/qt

Cushion Volume:

bbbl

Water Loss: 7.99 in³

Gas Cushion Type:

Resistivity: ohm.m

Gas Cushion Pressure:

psig

Salinity: 1700.00 ppm

Filter Cake: 1.00 inches

Recovery Information

Recovery Table

Length ft	Description	Volume bbl
125.00	100% Mud	0.615
0.00	5289 Feet Gas In Pipe	0.000

Total Length: 125.00 ft Total Volume: 0.615 bbl

Num Fluid Samples: 0

Num Gas Bombs: 0

Serial #:

Laboratory Name:

Laboratory Location:

Recovery Comments:

