

# GEOLOGIST'S REPORT

## WellSight Systems

Scale 1:240 (5"=100') Imperial  
Measured Depth Log

Well Name: JANZEN #3-36  
API: 15-171-21026-0000  
Location: 915 FSL & 1880 FWL OF SECTION 36 T16S R34W  
License Number: KCC #7311  
Spud Date: 2/17/2014  
Surface Coordinates: 915 FSL & 1880 FWL OF SECTION  
Region: SCOTT COUNTY  
Drilling Completed: 2/28/2014

Bottom Hole VERTICAL TEST  
Coordinates:  
Ground Elevation (ft): 3102  
Logged Interval (ft): 3700 To: TD  
Formation: MISSISSIPPIAN  
Type of Drilling Fluid: GEL  
K.B. Elevation (ft): 3114  
Total Depth (ft): 3880

Printed by STRIP.LOG from WellSight Systems 1-800-447-1534 www.WellSight.com

### OPERATOR

Company: SHAKESPEARE OIL COMPANY, INC.  
Address: 202 WEST MAIN STREET  
SALEM, IL  
62881

### GEOLOGIST


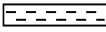

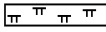
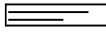
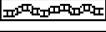




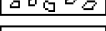


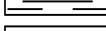




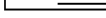
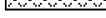
Name: MARK W. HERNDON  
Company: TRC  
Address: P.O. BOX 5958  
NORMAN, OK  
73070

### Cores

### DSTs

### Comments

### ROCK TYPES

	Anhy		Clyst		Gyp		Mrlst		Shgy
	Bent		Coal		Igne		Salt		Sltst
	Brec		Congl		Lmst		Shale		Ss
	Cht		Dol		Meta		Shcol		Till

### ACCESSORIES

#### MINERAL

- Anhy
- Arggrn
- Arg
- Bent
- Bit
- Breclrag
- Calc
- Carb
- Chtdk
- Chtlt
- Dol
- Feldspar
- Ferrpel
- Ferr
- Glau

- Gyp
- Hvymin
- Kaol
- Marl
- Minxl
- Nodule
- Phos
- Pyr
- Salt
- Sandy
- Silt
- Sil
- Sulphur
- Tuff

#### FOSSIL

- Algae
- Amph
- Belm
- Bioclst
- Brach
- Bryozoa
- Cephal
- Coral
- Crin
- Echin
- Fish
- Foram
- Fossil
- Gastro
- Oolite

- Ostra
- Pelec
- Pellet
- Pisolite
- Plant
- Strom

#### STRINGER

- Anhy
- Arg
- Bent
- Coal
- Dol
- Gyp
- Ls
- Mrst

- Sltstrg
- Ssstrg

#### TEXTURE

- Boundst
- Chalky
- Cryxln
- Earthy
- Finexln
- Grainst
- Lithogr
- Microxln
- Mudst
- Packst
- Wackest

### OTHER SYMBOLS

#### POROSITY

- Earthy
- Fenest
- Fracture
- Inter
- Moldic
- Organic
- Pinpoint

- Vuggy

#### SORTING

- Well
- Moderate
- Poor

#### ROUNDING

- Rounded
- Subrnd
- Subang
- Angular

- Spotted
- Ques
- Dead

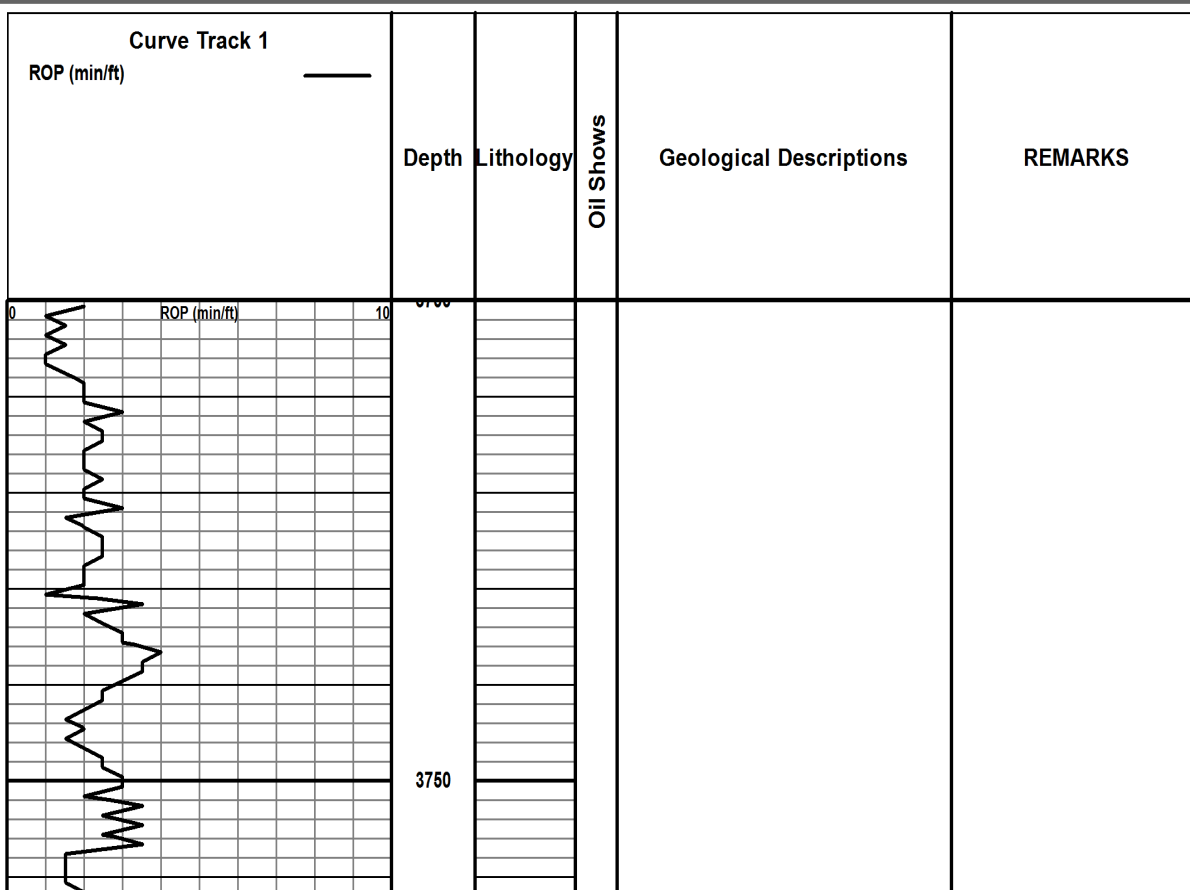
#### INTERVAL

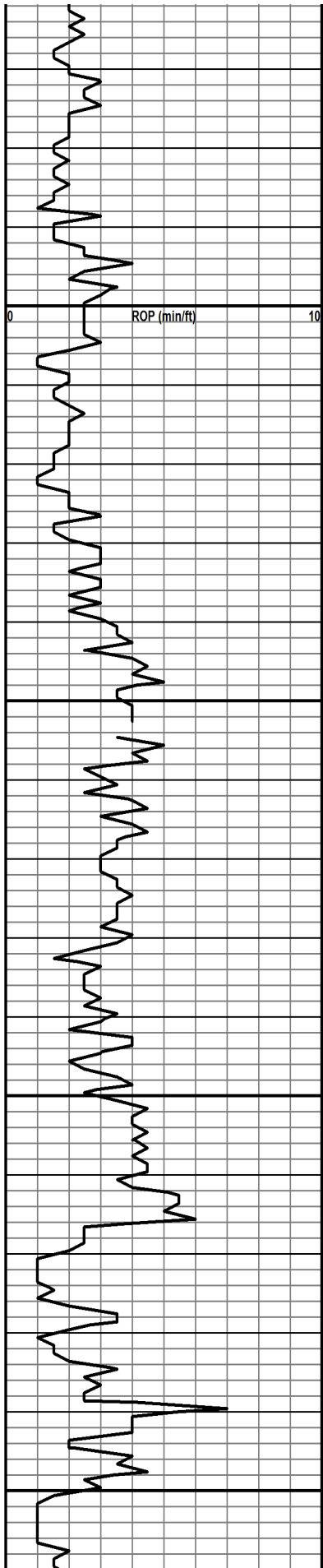
- Core
- Dst

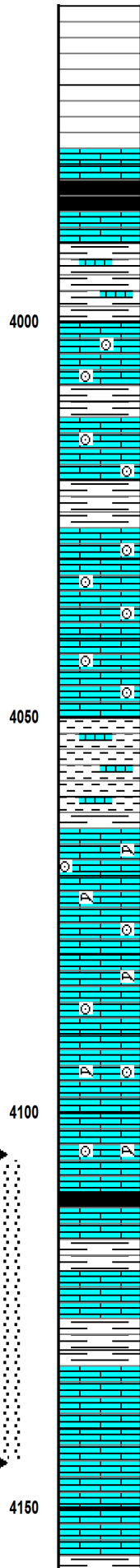
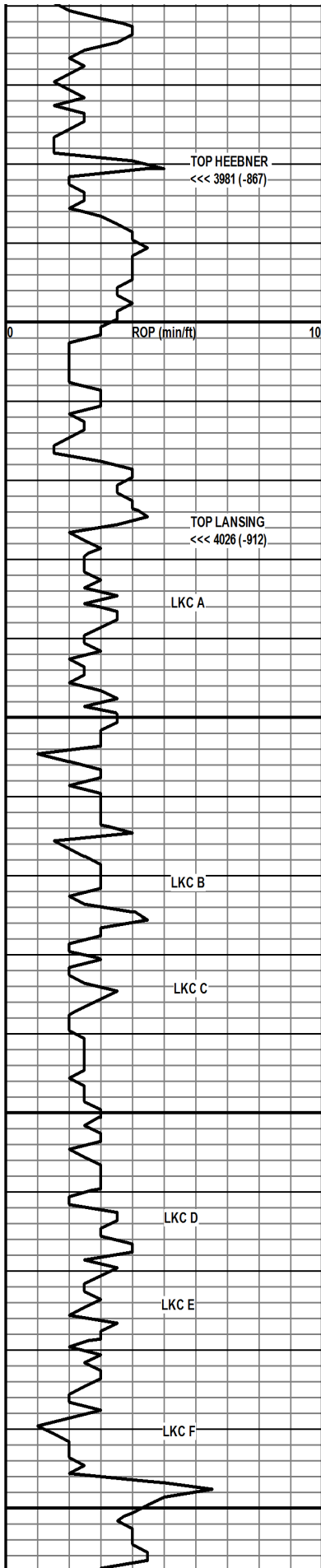
#### EVENT

- Rft
- Sidewall

- OIL SHOW
- Even







SHALE: BLACK

SHALE: GRAY TO DARK GRAY

LS: CRMY TO LT GRAY, CRS XTLN, DNS, WCMNTD, FOS, NVP. VRY SPTY DK BRN D O STN. NO FLOUR.

SH: GRAY, BLKY

LS: CRMY TO LT GRAY, WCMNTD CRSE FOS. NVP, V SPTY D O STN. NO FLOUR.

SH: GRAY, BLKY

LS: CHLKY WH TO LT GRAY, WCMNTD, CRS FOS, OCC CRINOIDS, NVP, SPTY DRK BRN DEAD OIL STN (DOS)

SHALE: GRAY TO DARK GRAY, WITH WH CHLKY TITE LS.

LS: CRMY TO TAN, CRSE XTLN IN WL CMNTD MTRX, FOS, OCC OIDS. FR PP VGY POR, SPTY DRK BRN DEAD OIL STN. NO FLOUR.

LS: CRMY TO LT TAN, CRS XTLN, WL CMNTD, FOS FRAGS, PR PP POR, SPTY DRK BRN DOS, NO FLOUR.

LS: CRMY, DNSE, FN XTLN, WELL CMNTD, SPTY DRK BRN D O STN

LS: CRMY TO LT TAN, FN XTLN, OCC PP VGY POR, PR PP D O STN.

SH: DRK GRAY

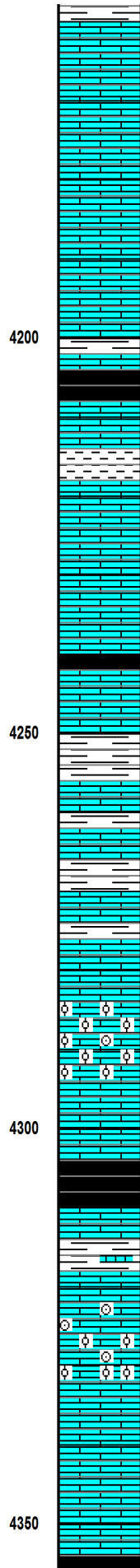
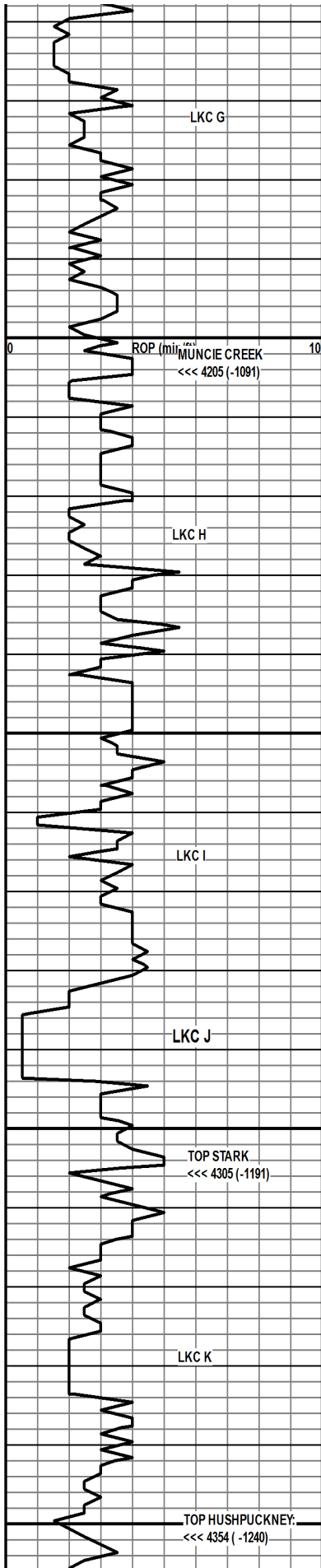
LS: CRM TO LT GRAY, VFN XTLN, DENSE, FR PP POR. FEW VUGS WGD SHO LT BRN LOS, BRT YLW FLOUR, GD INST STRMMG CUT. FSFO. SEE DST #1

LS: CRMY TO LT GRAY, VFN XTLN, DNSE, NVP, NS

**NOTE: THROUGHOUT THE LKC SECTION THERE IS REGULAR SPTY DRK BRN DEAD OIL STAIN W NO FLOURESCENCE**

**DST #1: 4105 TO 4145  
LKC D, E, F  
30-30-30-30  
30" BUILT TO 1/2" NO RETURN BLOW  
30 MIN WK SURF BLOW  
REC 25' MUD, NS  
HP: 1986-1983  
IF: 16-20 FF: 21-25  
SIP: 1001 -963**

**NOTE: STRAP 3.6 FT LONG TO BOARD**



LS: CRMY TO LT GRY, CHLKY, DNS, NVP, NS

LS: CRMY TO LT GRY, CHLKY, DNS, NVP, NS

LS: CRMY TO LT GRY, CHLKY, DNS, NVP

SHALE: BLACK

LS: LT TAN, FN XTLN, FOS, PR INXL PP POR, SS DRK BRN DEAD OIL. NO ODOR, NO FLOR.

LS: CRMY TO GRY, FN XTLN, CHKY, FOS-SLI OOL, P TO FR V FN INT XTLN POR. VRY SPTY DK BRN DEAD OIL STN. NO FLOUR.

LS: CRMY TO GRY, MICR XTLN, DNSE, NVP, NS

LS: CRMY TO GRY, FN XTLN, DNSE, SL FOS, NVP, SPTY STN DRK TO BLK DEAD OIL STN. NO FLOUR, NO ODOR

SH: GRY, RNDED

LS: WH TO LT TAN, ARG, NVP, NS

LS: CRMY TO LT GRY, FN XTLN, SM WELL CMNTD OOID-FOS FRAG PKSTN, SM EXC OOLICASTIC POR. V SPTY DK BRN O STN. NO FLOR.

LS: CRM TO LT TAN, FN XTLN, OCC FOS.

SH: BLK

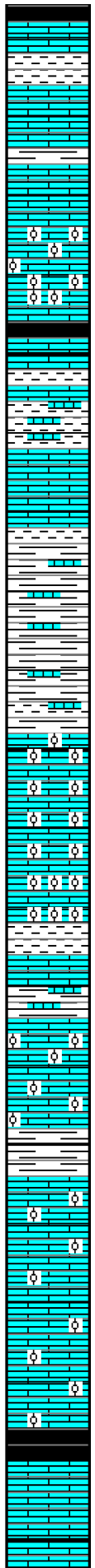
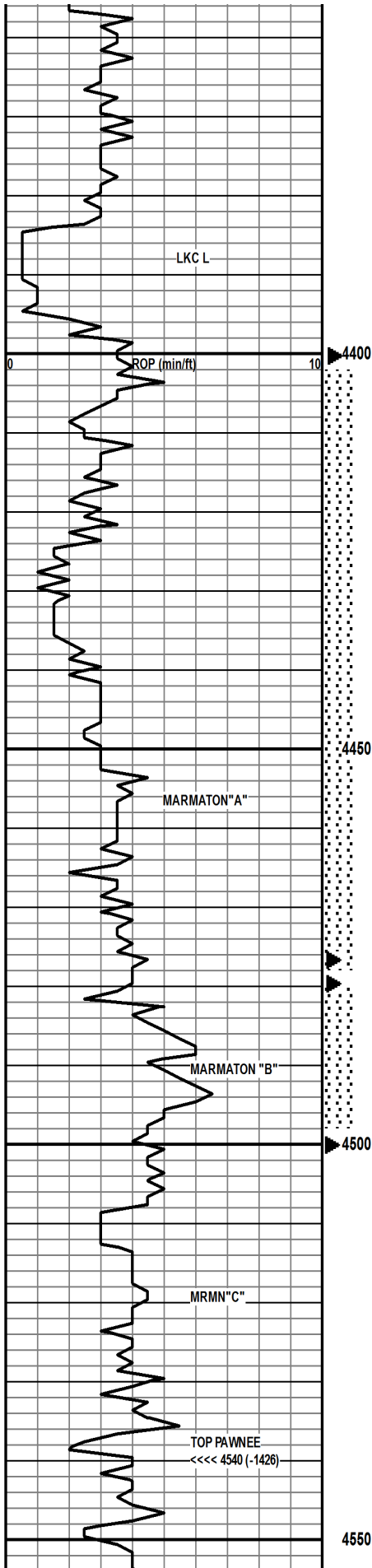
LS: WH TO DRK GRY, DNS, SM EXC OOLICASTIC POR, MOST OOL & FOS FRAG WL CMNTD PACKSTONE. SPTY DK BRN D O S.

LS: CRMY TO LT GRY, CHLKY, DNS, NVP NS

LS: CRMY TO LT GRY, CHLKY, DNS, NVP, NS

NOTE: VERY POOR SAMPLES

VIS 54  
MW: 9.1



SH: BLK

LS: LT TAN TO GRY, FN XTLN, OCC FOS IN TITE MTRX, NVP, NS

LS: WH, CRSE OOLICASTIC VGY POR, NS

SH: LT TO DRK GRY WDNS LT GRY DNS LS STREAKS.

LS: CRMY TO LT TAN, CHLKY, DNS, NVP, NS

SH: DRK GRY

SH: DRK GRY

LS: LT GRY TO LT TAN, MSTLY WL CMNTD OOL & FOS FRAG PACKSTONE. OCC BRYZN, FEW PCS MED XTLN, VUGGY, OOL/FOS FRAGS W GD SAT LT BRN LOS, BRT YLW FLOUR, FLASH CUT. MSTLY WL CMNTD & TITE. FEW PCS OOLICASTIC W NO SHO

LS: LT GRY, MSTLY WL CMNTD FN GRN OOL & FOS FRG PKSTN. FEW PCS WFR PP VGY POR BLDG LIVE OIL. BRT YLW FLOUR, FL SH CUT. VUGS ARE VRY SML AND PERM IS QUESTIONABLE. FEW PCS OOLICASTIC W NO SHO

LS: LT GRY, WL CMNTD FN GRN OOID & FOS FRG PACKSTONE. FEW PCS WFR PP VGY POR VIS BLDG LIVE OIL. GD EVN LOS, BRT YLW FLOUR, FL SH CUT.

LS: CRMY TO DK GRY, DNSE, VRY WL CMNTD OOID GRAINSTONE. NVP, NS

LS: CRMY TO DK GRY, CHLKY IP, WL CMNTD OOLIDS & FOS FRAGS. NVP, NO FLOUR, NO ODOR, NS

SH: BLACK, BLKY

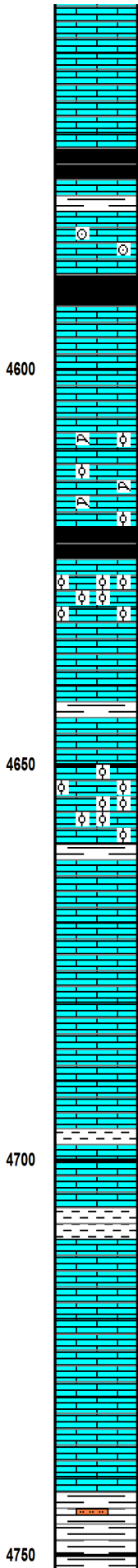
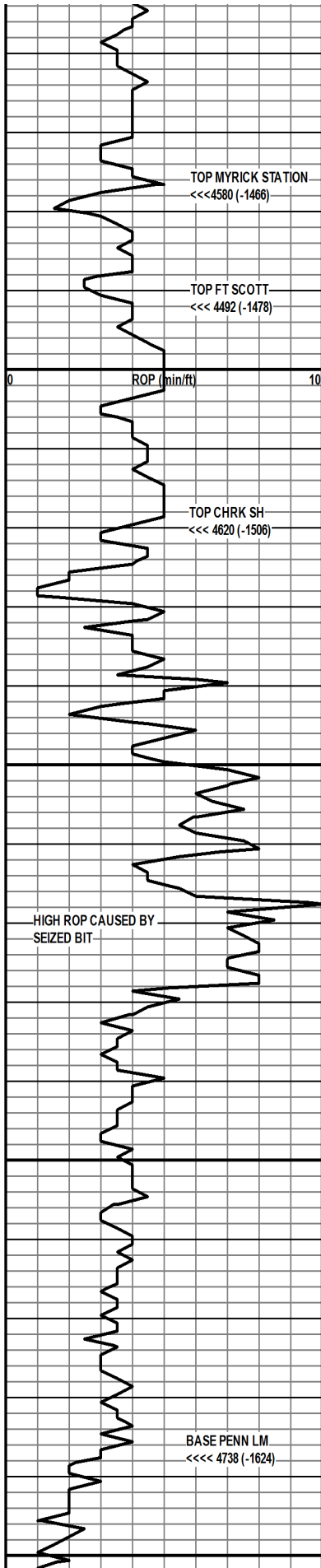
LS: CRMY TO GRY, FN XTLN, DNSE, NVP, NS

VIS: 57  
MW: 9.3

VIS: 63  
MW: 9.3

DST#2: MARMATON "A"  
4400-4480  
15-30-45-90  
IF: BOB IN 6 MIN. RETURN: 2.75"  
FF: BOB IN 4 MIN. RETURN: BOB IN 18 MIN  
RECOVERY: 1070' GIP, 475' GO, 125' GOCM  
HP: 2214-2199  
IF: 41-106 FF: 112-201  
SIP: 528-423

DST #3: MARMATON "B"  
4477-4500  
30-30-30-60  
IF: 3" BLOW, NO RETURN  
FF: 3.75" BLOW, NO RETURN  
RECOVERY: 2 FT OIL, 13 FT OCM  
HP: 2226-2184  
IF: 26-31 FF: 30-33  
SIP: 1279-1287



LS: CRMY TO GRY, FN XTLN, DENSE, NO FOS, NVP, NS

LS: CRMY TO GRY, FN XTLN, DENSE, NO FOS, NVP, NS.

SH: BLACK

LS: WH TO LT TAN, MICR XTLN, DNS, OCC FOS, WL CMNTD, NVP, ONE PIECE W VRY FN XTLN POR BLDG LV OIL  
SH: BLACK

LS: LT TAN, MICR XTLN, DNSE, NO FOS, NO FLOUR, NS

LS: CRMY TO LT GRY, FN TO MED GRN, WL CMNTD, OOID & FOS FRAGS, NVP, NS

SH: BLACK

LS: CRMY TO LT GRY, V FN GRN OOLITE. SM VRY FN OOL POR. NS ONE PIECE W VRY FN OOL POR BLDG LV OIL

LS: CRMY TO LT GRY, DNS, NVP, INCR IN DRK GRY SH. NS.

LS: WH TO LT GRY, DNS, OCC WL CMNTD OOID GRNSTN, NVP, NS

LS: CRMY TO LT GRY, V FN XTLN, OCC FOS, NVP, NS

LS: CRMY TO LT GRY, FN XTLN, OCC FOS, W CMNTD, NVP, NS

LS: CRMY TO LT GRY, FN XTLN, DNSE, WL CMNTD, NVP, NS

LS: CRMY TO LT GRY, V FN XTLN, DNSE, NVP, NS

LS: CRMY TO LT GRY, V FN XTLN, DNSE, NVP, NS

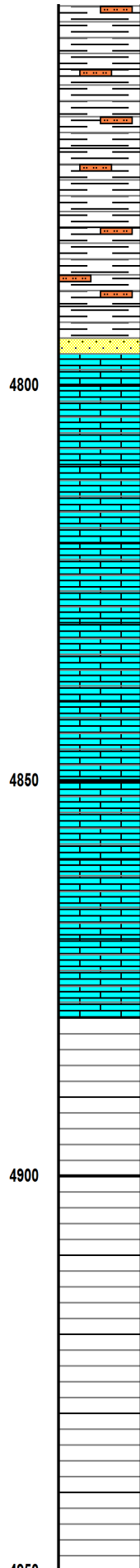
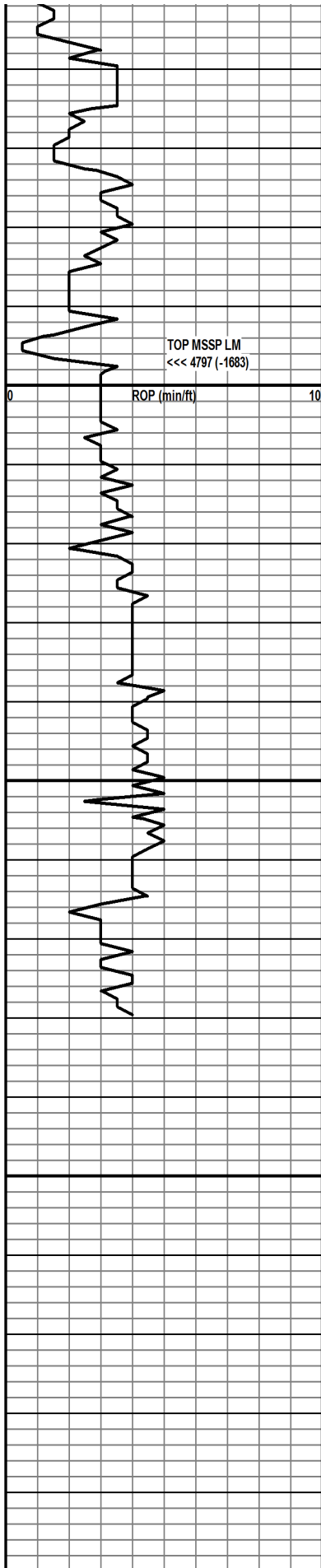
SH: VARI COLORED, OCC GRY PRLY SRTD SILTSTONE, NVP, NS

**NOTE: PCS BLEEDING LIVE OIL APPEAR TO HAVE LOW PERM.**

**NOTE: HIGH ROP RATES DUE TO BIT GOING OUT**

**NOTE: GEOLOGRAPH STICKING**

**BIT TRIP 4678**



SH: VARI COLORED, OCC GRY SILTSTONE, NVP, NS

SH: VARI COLORED, OCC GRY SLTSTN, NVP, NS

MORROW SANDSTONE: SS: WH, V FN GRN, WELL SR TD, RND, WL CMNTD W CALCITE CMNT. NVP, NS

LS: LT TAN, FN XTLN, DNSE, NVP, NS

LS: LT TAN, MED XTLN, DNSE, NVP, NS

LS: LT TAN, V FN XTLN, NVP, NS

LS: LT TAN, V FN XTLN, NVP, NS

LS: LT TAN, V FN XTLN, NVP, NS

LS: LT TAN, V FN XTLN, NVP, NS

RTD: 4880  
LTD: 4774



