



**TRILOBITE  
TESTING, INC**

# DRILL STEM TEST REPORT

Shakespeare Oil Co., Inc.

**36-16s-34w Scott Co.**

202 W Main St  
Salem, IL 62881

**Janzen #3-36**

Job Ticket: 56353

**DST#: 2**

ATTN: Mark Herndon

Test Start: 2014.02.25 @ 02:36:00

## GENERAL INFORMATION:

Formation: **Marmaton " A "**

Deviated: No Whipstock: ft (KB)

Time Tool Opened: 06:07:30

Time Test Ended: 12:27:15

Test Type: Conventional Bottom Hole (Reset)

Tester: Samuel Esparza

Unit No: 71

**Interval: 4400.00 ft (KB) To 4480.00 ft (KB) (TVD)**

Reference Elevations: 3114.00 ft (KB)

Total Depth: 4480.00 ft (KB) (TVD)

3102.00 ft (CF)

Hole Diameter: 7.88 inches Hole Condition: Good

KB to GR/CF: 12.00 ft

**Serial #: 8845**

**Inside**

Press@RunDepth: 201.39 psig @ 4401.00 ft (KB)

Capacity: 8000.00 psig

Start Date: 2014.02.25

End Date:

2014.02.25

Last Calib.:

2014.02.25

Start Time:

02:36:05

End Time:

12:27:15

Time On Btm:

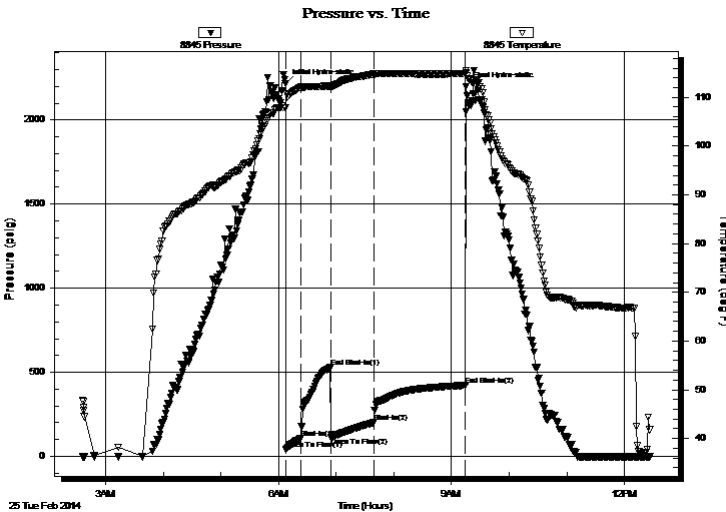
2014.02.25 @ 06:07:00

Time Off Btm:

2014.02.25 @ 09:15:30

**TEST COMMENT:** IF: BOB @ 6 min.  
IS: Bled off for 6 min. 2 3/4" Return.  
FF: BOB @ 4 1/2 min.  
FS: Bled off for 6 min. BOB Return @ 18 min.

## PRESSURE SUMMARY



Time (Min.)	Pressure (psig)	Temp (deg F)	Annotation
0	2214.90	107.95	Initial Hydro-static
1	41.05	107.99	Open To Flow (1)
16	106.63	112.12	Shut-In(1)
47	528.82	112.32	End Shut-In(1)
48	112.61	112.18	Open To Flow (2)
93	201.39	114.75	Shut-In(2)
188	422.90	114.86	End Shut-In(2)
189	2199.18	115.10	Final Hydro-static

## Recovery

Length (ft)	Description	Volume (bbl)
125.00	GOCM 20g 30o 50m	1.75
470.00	GO 30g 70o	6.59
0.00	1070' GIP	0.00

\* Recovery from multiple tests

## Gas Rates

	Choke (inches)	Pressure (psig)	Gas Rate (Mcf/d)



**TRILOBITE  
TESTING, INC**

# DRILL STEM TEST REPORT

**FLUID SUMMARY**

Shakespeare Oil Co., Inc.

**36-16s-34w Scott Co.**

202 W Main St  
Salem, IL 62881

**Janzen #3-36**

Job Ticket: 56353

**DST#: 2**

ATTN: Mark Herndon

Test Start: 2014.02.25 @ 02:36:00

## Mud and Cushion Information

Mud Type: Gel Chem

Cushion Type:

Oil API:

37 deg API

Mud Weight: 10.00 lb/gal

Cushion Length:

ft

Water Salinity:

ppm

Viscosity: 74.00 sec/qt

Cushion Volume:

bbbl

Water Loss: 10.39 in<sup>3</sup>

Gas Cushion Type:

Resistivity: 0.00 ohm.m

Gas Cushion Pressure:

psig

Salinity: 6000.00 ppm

Filter Cake: 2.00 inches

## Recovery Information

Recovery Table

Length ft	Description	Volume bbl
125.00	GOCM 20g 30o 50m	1.753
470.00	GO 30g 70o	6.593
0.00	1070' GIP	0.000

Total Length: 595.00 ft      Total Volume: 8.346 bbl

Num Fluid Samples: 0

Num Gas Bombs: 0

Serial #:

Laboratory Name:

Laboratory Location:

Recovery Comments: Oil API: 34 @ 30 degrees= 37 deg API

Serial #: 8845

Inside

Shakespeare Oil Co., Inc.

Janzen #3-36

DST Test Number: 2

