



**TRILOBITE  
TESTING, INC.**

# DRILL STEM TEST REPORT

Shakespeare Oil Co., Inc.

**25-16s-34w Scott Co.**

202 W Main St  
Salem, IL 62881

**Ortega #1-25**

Job Ticket: 56724

**DST#: 1**

ATTN: Tim Priest

Test Start: 2014.02.19 @ 14:29:00

## GENERAL INFORMATION:

Formation: " J "

Deviated: No Whipstock: ft (KB)

Time Tool Opened: 16:36:30

Time Test Ended: 21:12:00

Test Type: Conventional Bottom Hole (Initial)

Tester: Sam Esparza

Unit No: 71

**Interval: 4253.00 ft (KB) To 4288.00 ft (KB) (TVD)**

Reference Elevations: 3105.00 ft (KB)

Total Depth: 4288.00 ft (KB) (TVD)

3095.00 ft (CF)

Hole Diameter: 7.88 inches Hole Condition: Good

KB to GR/CF: 10.00 ft

**Serial #: 8845**

**Inside**

Press @ Run Depth: 288.97 psig @ 4254.00 ft (KB)

Capacity: 8000.00 psig

Start Date: 2014.02.19

End Date:

2014.02.19

Last Calib.:

2014.02.19

Start Time:

14:29:05

End Time:

21:11:59

Time On Btm:

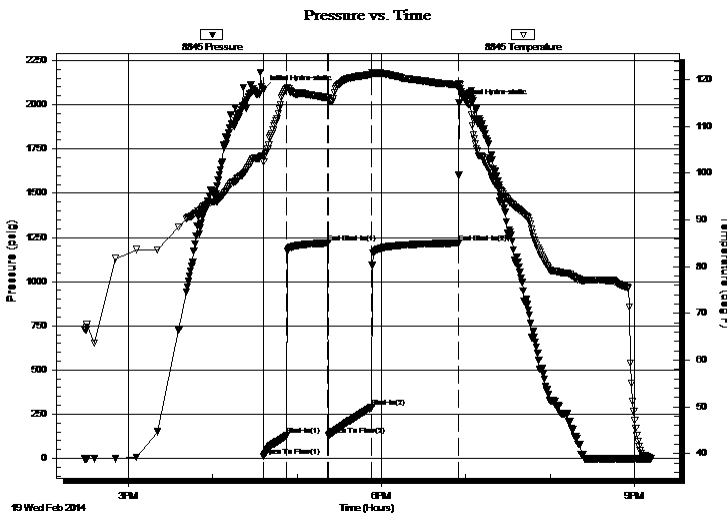
2014.02.19 @ 16:36:15

Time Off Btm:

2014.02.19 @ 18:55:15

**TEST COMMENT:** IF: BOB @ 12 min.  
IS: No Return.  
FF: BOB @ 11 min.  
FS: No Return.

## PRESSURE SUMMARY



Time (Min.)	Pressure (psig)	Temp (deg F)	Annotation
0	2083.96	103.76	Initial Hydro-static
1	13.44	102.49	Open To Flow (1)
17	128.17	117.98	Shut-In(1)
46	1217.80	116.16	End Shut-In(1)
46	129.52	115.70	Open To Flow (2)
77	288.97	121.12	Shut-In(2)
139	1216.58	118.85	End Shut-In(2)
139	2009.09	119.09	Final Hydro-static

## Recovery

Length (ft)	Description	Volume (bbl)
565.00	MCW 5m 95w	6.84
130.00	WCM ( Oil Spots ) 30w 70m	1.82

## Gas Rates

	Choke (inches)	Pressure (psig)	Gas Rate (Mcf/d)





**TRILOBITE  
TESTING, INC.**

# DRILL STEM TEST REPORT

**FLUID SUMMARY**

Shakespeare Oil Co., Inc.

**25-16s-34w Scott Co.**

202 W Main St  
Salem, IL 62881

**Ortega #1-25**

Job Ticket: 56724

**DST#: 1**

ATTN: Tim Priest

Test Start: 2014.02.19 @ 14:29:00

## Mud and Cushion Information

Mud Type: Gel Chem

Cushion Type:

Oil API:

deg API

Mud Weight: 9.00 lb/gal

Cushion Length:

ft

Water Salinity:

55000 ppm

Viscosity: 55.00 sec/qt

Cushion Volume:

bbbl

Water Loss: 7.20 in<sup>3</sup>

Gas Cushion Type:

Resistivity: 0.00 ohm.m

Gas Cushion Pressure:

psig

Salinity: 5700.00 ppm

Filter Cake: 1.00 inches

## Recovery Information

Recovery Table

Length ft	Description	Volume bbbl
565.00	MCW 5m 95w	6.841
130.00	WCM ( Oil Spots ) 30w 70m	1.824

Total Length: 695.00 ft      Total Volume: 8.665 bbl

Num Fluid Samples: 0

Num Gas Bombs: 0

Serial #:

Laboratory Name:

Laboratory Location:

Recovery Comments: Water Salinity: .210 @ 43 degrees= 55,000 ppm

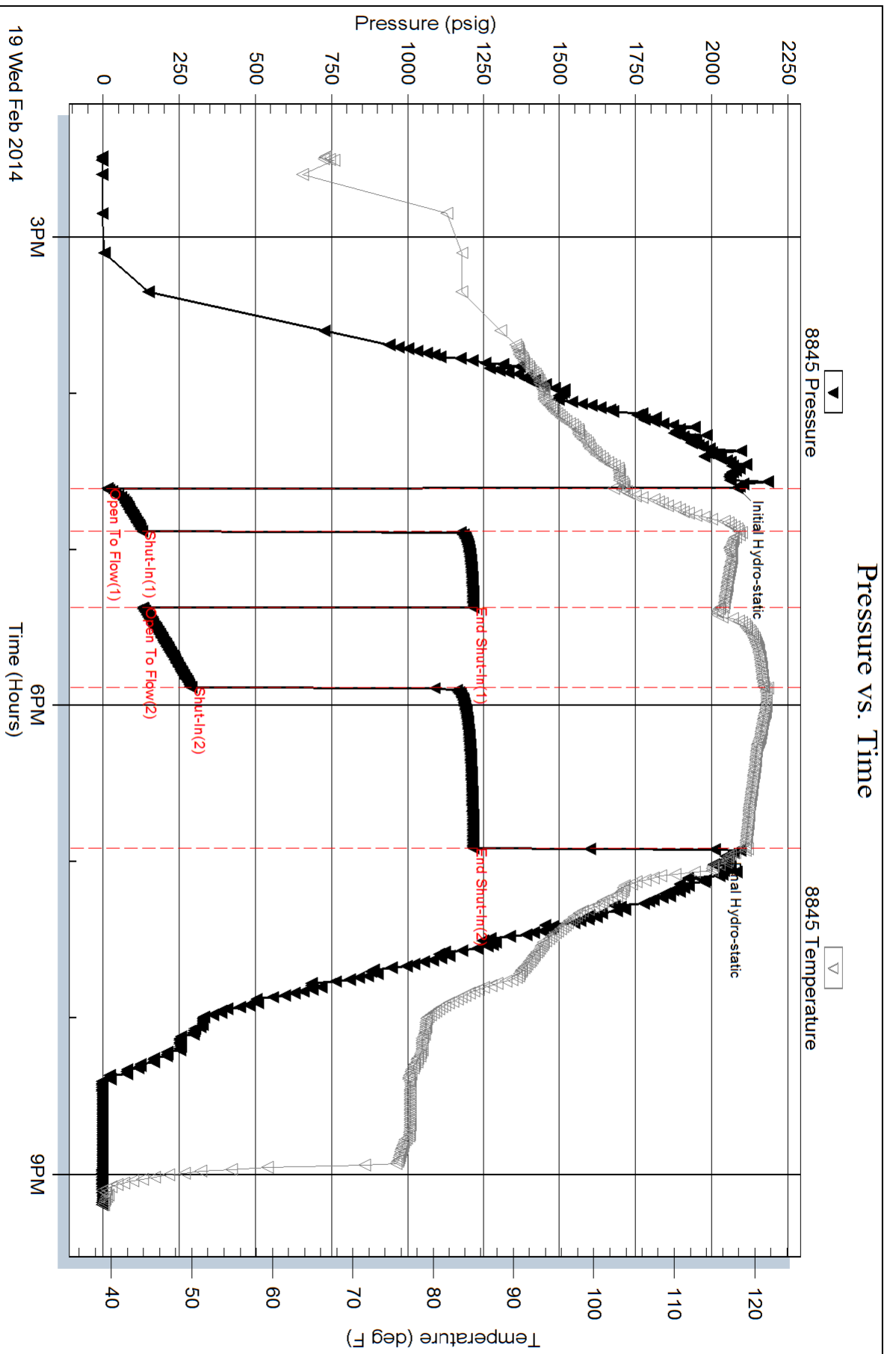
Serial #: 8845

Inside

Shakespeare Oil Co., Inc.

Ortega #1-25

DST Test Number: 1



Serial #: 6772

Outside Shakespeare Oil Co., Inc.

Ortega #1-25

DST Test Number: 1

