

**TIM PRIEST**  
**Petroleum Geologist**  
 (316)-213-6115

**GEOLOGIST'S REPORT**  
 DRILLING TIME AND SAMPLE LOG

COMPANY: **SHAKESTAKE OIL CO.** ELEVATIONS: **KG 3104'**

LEASE: **Orange #25**

FIELD: **Wildcat** DE: **\_\_\_\_\_**

LOCATION: **2000' FUL. 2287' FEL**

SEC: **25 TMS# 16S ROE 34W** GL: **3094'**

COUNTY: **Scott STATE Kansas** Measurements Are All From **KB**

CONTRACTOR: **HD #2** From **KB**

SPUD: **2-11-14 COMP**

RTD: **\_\_\_\_\_** LTD: **\_\_\_\_\_** CASING CONDUCTION: **N/A**

MUD UP: **3600'** TYPE MUD: **Chemical** SURFACE: **8-5/8" @ 263'**

SAMPLES SAVED FROM: **3800'** to **RTD** PRODUCTION: **4 1/2" @ '**

DRILLING TIME KEPT FROM: **3800'** to **RTD**

SAMPLES EXAMINED FROM: **3800'** to **RTD** ELECTRICAL SURVEYS: **CND/DSP/PE**

GEOLOGICAL SUPERVISION FROM: **3950'** to **RTD**

GEOLOGIST ON WELL: **Tim Priest** Micro Sonic By: **Weatherford**

FORMATION TOPS: \_\_\_\_\_ SAMPLE \_\_\_\_\_

ANHYDRITE \_\_\_\_\_

SANDSTONE \_\_\_\_\_

LIMESTONE \_\_\_\_\_

SHALE \_\_\_\_\_

CHERT \_\_\_\_\_

DOLomite \_\_\_\_\_

Heebner Shale \_\_\_\_\_

Stark \_\_\_\_\_

Cherokee Shale \_\_\_\_\_

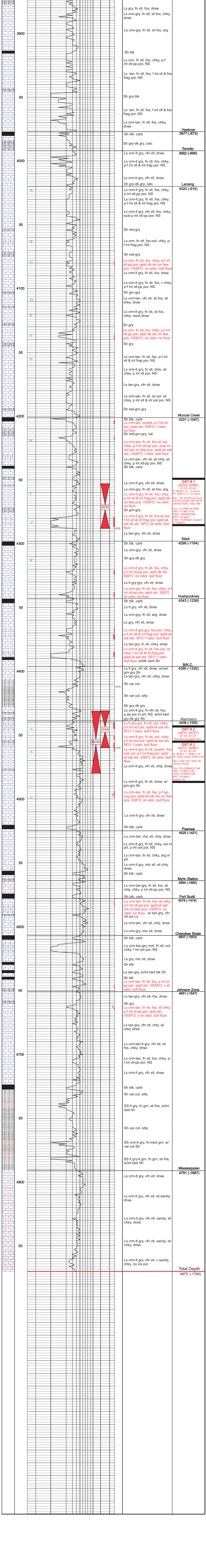
Mississippian \_\_\_\_\_

Fort Scott \_\_\_\_\_

REMARKS

API #15-171-21017-00-00

Respectfully Submitted, Tim Priest Petroleum Geologist



4870' Total Depth (-1766)