

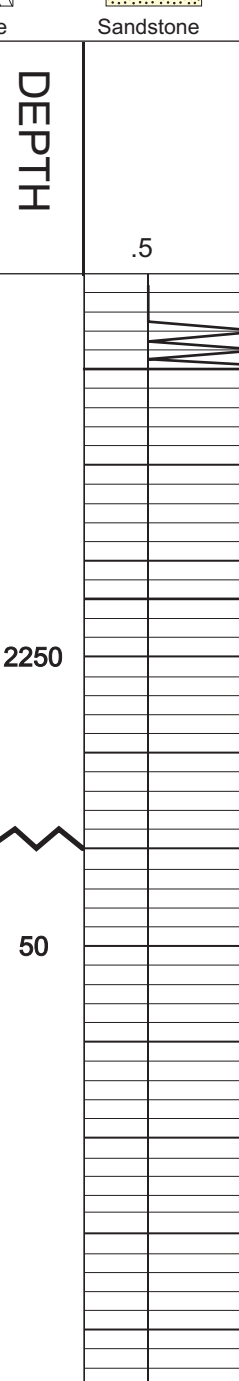
GEOLOGIST'S REPORT
DRILLING TIME AND SAMPLE LOG

COMPANY **SHAKESPERE OIL CO.**
 LEASE **York 2-2**
 FIELD **Widener**
 LOCATION **6907 NW, 1790' FWL**
 SEC **2** TWP **16S** RGE **31W**
 COUNTY **Scott** STATE **Kansas**

ELEVATIONS
 KB 2780'
 DF _____
 GL 2770'
 Measurements Are All From **KB**

CONTRACTOR HD Rig #2
 SPUD **3-11-14** COMP _____
 RTD _____ LTD _____
 MUD UP **3600'** TYPE MUD **Chemical**
 SURFACE **8-5/8" @ 254'**
 CONDUCTION **N/A**

SAMPLES SAVED FROM **3650'** to RTD
 DRILLING TIME KEPT FROM **3650'** to RTD
 SAMPLES EXAMINED FROM **3650'** to RTD
 GEOLOGICAL SUPERVISION FROM **3680'** to RTD
 GEOLOGIST ON WELL **Tim Priest**
 FORMATION TOPS **ELECTRIC LOG** SAMPLE
 ANALYTES _____
 Heebner Shale _____
 Lansing _____
 Stark Shale _____
 B/KC _____
 Fort Scott _____
 Mississippian _____



REMARKS
 Respectfully Submitted,
 Tim Priest
 Petroleum Geologist
 API #15-171-21037-00-00

