



NOTES

Company: American Warrior, Inc.
 Lease: Shadow 6-17
 Field: Shadow
 Location: NW-SE-NE-NW (799' FNL & 2279' FWL)
 Sec: 17 Twsp: 28S Rge: 30W
 County: Gray State: Kansas
 GL: 2805' KB: 2818'
 API #: 15-069-20470-00-00
 Contractor: Duke Drilling Inc. (Rig #9)
 Spud: 03/10/2014 Comp: 03/19/2014
 RTD: 5300' LTD: '
 Mud Up: 3800' Type Mud: Chemical
 Samples Saved From: 3900' to RTD
 Drilling Time Kept From: 3900' to RTD
 Samples Examined From: 3900' to RTD
 Geological Supervision from: 3900' to RTD
 Geologist on Well: Wyatt Urban
 Surface Casing: 8 5/8@1743'
 Electronic Surveys: Logged by Pioneer Energy Services: DIL/ MEL/BHCS

American Warrior Well Comparison

Formation	DRILLING WELL American Warrior- Shadow 6-17 NW-SE-NE-NW 17-28s-30W 2818 KB				COMPARISON WELL American Warrior- Shadow 2-17 SW-NE-SE-NW 17-28s-30W 2810 KB				COMPARISON WELL American Warrior-Shadow 3-17 NE-SW-NE-NW 17-28s-30W 2821 KB			
	Sample	Sub-Sea	Log	Sub-Sea	Log	Sub-Sea	Sample	Log	Log	Sub-Sea	Sample	Log
Heebner	4131	-1313		2818	4125	-1315	2			4133	-1312	-1
Lansing	4227	-1409		2818	4220	-1410	1			4228	-1407	-2
Stark	4595	-1777		2818						4599	-1778	1
Marmaton	4737	-1919		2818	4729	-1919	0	4737		4738	-1917	-2
Pawnee	4820	-2002		2818						4828	-2007	5
Cherokee	4869	-2051		2818	4861	-2051	0	4869		4874	-2053	2
Atoka	5009	-2191		2818	5028	-2218	27	5036		5018	-2197	6
Morrow	5079	-2261		2818	5070	-2260	-1	5078		5079	-2258	-3
Morrow Sd. upr	5086	-2268		2818	5087	-2277	9	5095				
Morrow Sd. Lwr	5114	-2296		2818	5107	-2297	1	5115				
Miss	5118	-2300		2818	5117	-2307	7	5125				
RTD	5300	-2482		2818	5249	-2439	-43	5257				
LTD		2818		2818	5249	-2439	5257	5257				



TRILOBITE TESTING, INC

DRILL STEM TEST REPORT

American Warrior Inc.
 P.o Box 399
 Garden City KS 67846

17-28s-30w Gray Co. KS.

Shadow # 6-17

Job Ticket: 56322

DST#: 1

GENERAL INFORMATION:

Formation: **Morrow Sand**

Deviated: No Whipstock: ft (KB)

Time Tool Opened: 19:18:40

Time Test Ended: 02:26:25

Test Type: Conventional Bottom Hole (Initial)

Tester: Will MacLean

Unit No: 72

Interval: **5051.00 ft (KB) To 5125.00 ft (KB) (TVD)**

Total Depth: 5125.00 ft (KB) (TVD)

Hole Diameter: 7.88 inches-Hole Condition: Good

Reference Elevations: 2818.00 ft (KB)

2805.00 ft (CF)

KB to GR/CF: 13.00 ft

Serial #: 8674

Inside

Press@RunDepth: 532.83 psig @ 5052.00 ft (KB)

Start Date: 2014.03.17

Start Time: 16:48:00

End Date: 2014.03.18

End Time: 02:26:25

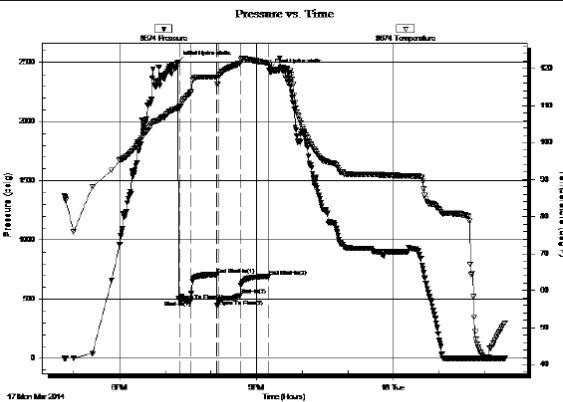
Capacity: 8000.00 psig

Last Calib.: 2014.03.18

Time On Btm: 2014.03.17 @ 19:17:10

Time Off Btm: 2014.03.17 @ 21:16:39

TEST COMMENT: IF- Strong Surface Blow Built to BOB in 22sec Gas to Surface in 8min
 IS- BOB
 FF- Strong Surface Blow Built to BOB in 6sec
 FS- BOB



PRESSURE SUMMARY

Time (Min.)	Pressure (psig)	Temp (deg F)	Annotation
0	2502.67	109.20	Initial Hydro-static
2	492.00	109.50	Open To Flow (1)
17	486.79	113.63	Shut-In(1)
51	708.15	117.74	End Shut-In(1)
54	492.60	118.09	Open To Flow (2)
82	532.83	121.44	Shut-In(2)
119	694.91	121.52	End Shut-In(2)
120	2439.69	121.00	Final Hydro-static

Recovery

Length (ft)	Description	Volume (bbl)
124.00	GMCO 4%g 24%m 72%oil	0.61
440.00	20min Sample GMCO 4%g 23%m 73%o5.63	
440.00	15min Sample GMCO 20%g 28%m 52%e6.17	
440.00	10min Sample GMCO 5%g 18%m 77%e6.17	
443.00	5min Sample MGCO 11%g 15%g 74%e6.21	
31.00	OGCM 7%oil 12%g 81%m	0.43

Gas Rates

	Choke (inches)	Pressure (psig)	Gas Rate (Mcf/d)
First Gas Rate	1.00	30.00	1276.45
Last Gas Rate	1.00	14.00	816.47
Max. Gas Rate	1.00	30.00	1276.45

ROCK TYPES

ACCESSORIES

MINERAL
 ▲ Chert, dark
 • Sandy
 •• Silty
 △ Chert White

FOSSIL
 F Fossils < 20%
 ○ Oolite
 ⊗ Pellets
 ⊕ Oomoldic
 ⊕ Fussiliid

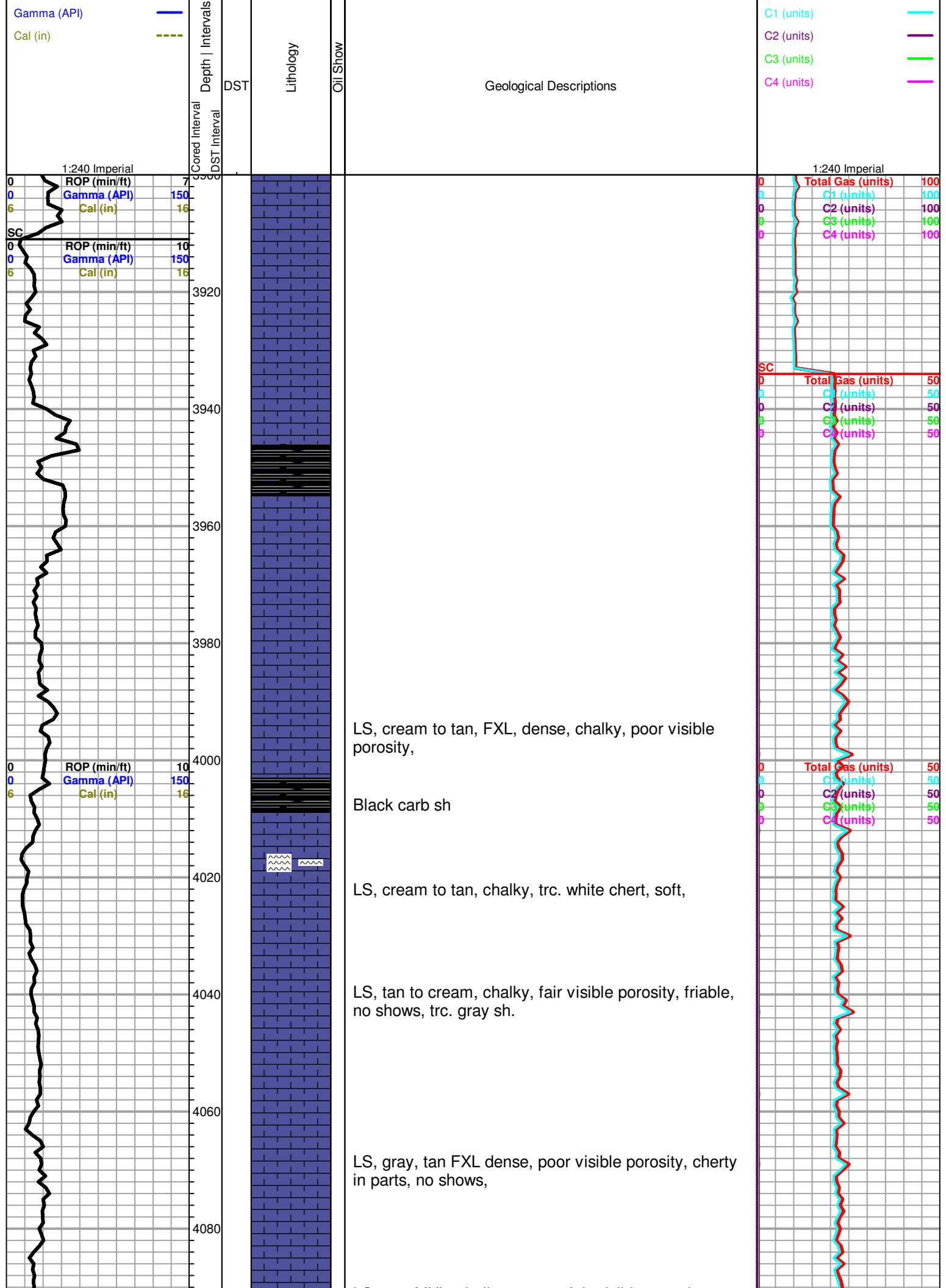
STRINGER
 ~~~ Chert  
 ● Sandstone  
 ▬ Shale  
 — green shale  
 — carb shale

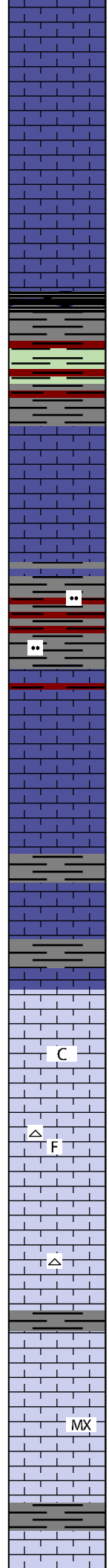
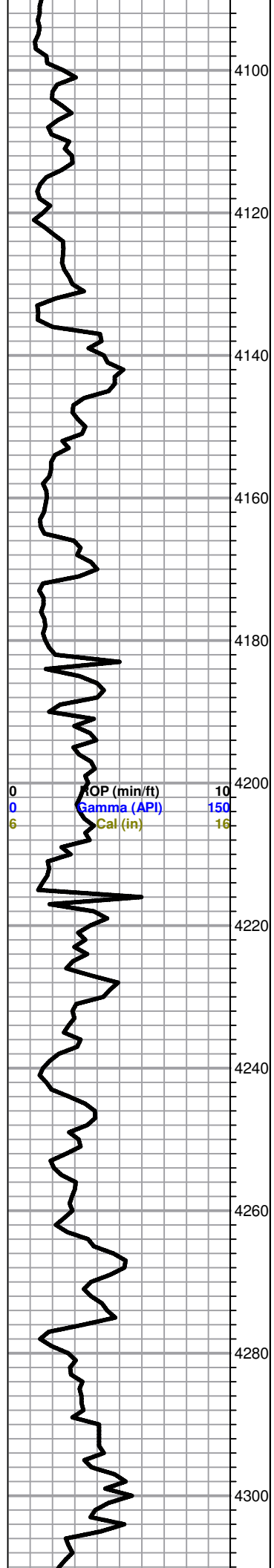
**TEXTURE**  
 C Chalky  
 CX Cryptocrystalline  
 FX Finexln  
 MX Microxln

**OTHER SYMBOLS**

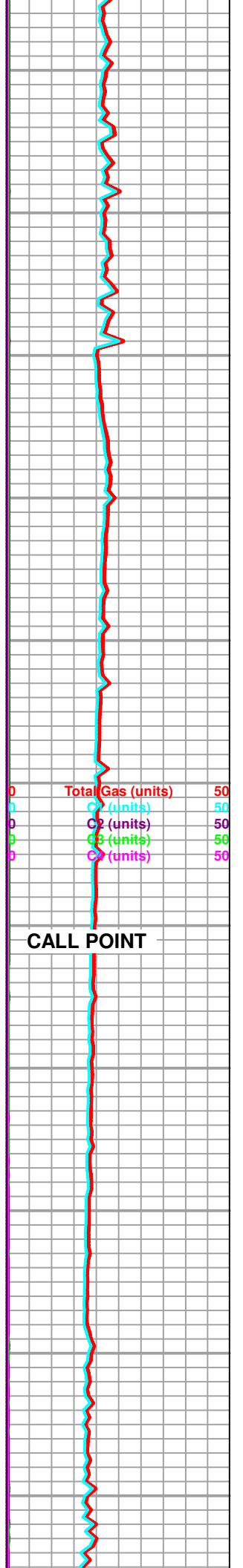
**Oil Show**  
 ● Good Show  
 ● Fair Show  
 ● Poor Show  
 ○ Spotted or Trace  
 ○ Questionable Stn  
 D Dead Oil Stn  
 ■ Fluorescence  
 \* Gas

**DST**  
 ■ DST Int  
 ■ DST alt  
 ■ Core  
 || tail pipe

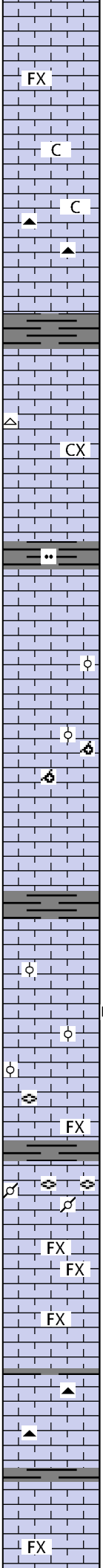




LS, tan, MXL, chalky, poor to fair visible porosity, friable, trc. black stn, NSFO,  
  
 LS, brn, FXL, cherty, poor visible porosity, dense, no shows  
  
 LS, tan, chalky, trc. black stain, NSFO, no odor  
  
 LS, gray, dense, FXL, cherty, poor visible porosity, trc. gray sh.  
  
**HEEBNER 4131 (-1313)**  
 Black carb Sh.  
  
 Sh. gray, maroon, soft silty in parts  
  
**Toronto 4145 (-1327)**  
 LS, cream to tan, FXL, few foss,dense, poor visible porosity, cherty in parts no shows,  
 LS, tan, granular, MXL, chalky, few foss, trc. LT. brown stain, Sh. gray, black, maroon, greenish  
  
 LS, white chalky, few foss,  
  
 LS, tan brown FXL, dense, cherty, few foss, poor scattered porosity, no shows, trc. soft red shale  
  
 Sh. maroon, greenish, gray,  
  
 LS, cream to tan, ool, poorly developed, chalky, no shows  
  
 LS, tan to brown, FXL, chert, few foss, poor visible porosity  
  
**LANSING 4227 (-1409)**  
 LS, tan to cream, FXL, chalky in parts, few foss, no shows  
  
 LS, cream to tan, FXL, cherty, foss, dense, poor visible porosity, no shows  
  
 LS, tan FXL, dense poor visible porosity, dense, foss, no shows  
  
 LS, gray, MXL, dense, cherty, poor visible porosity, foss, no shows  
  
 Sh. gray, silty, trc, LS, cream to tan, FXL, dense, poor visible porosity, no shows



4320  
4340  
4360  
4380  
4400  
4420  
4440  
4460  
4480  
4500  
4520



LS, cream to tan, FXL, cherty in parts, poor scattered porosity, dense, few foss, no shows

LS, tan to cream, gray, chalky, weathered, poor scattered porosity, no shows, trc. dark gray chert

LS, tan, MXL, dense, cherty no shows

LS, gray to tan, mottled, weathered, foss, chalky, no shows

LS, tan , cream, FXL, dense, few chalky, poor visible porosity, no shows

LS, tan, FXL, ool, few well developed, fair scattered porosity, no shows

LS, tan oom , good vuggy porosity, no shows

LS, tan to brown, FXL, cherty poor visible porosity, few foss, no shows, trc. gray shale

LS, cream to tan, ool, fair oomoldic porosity, foss, Lt. trc. flor. odor??? NSFO, no stain

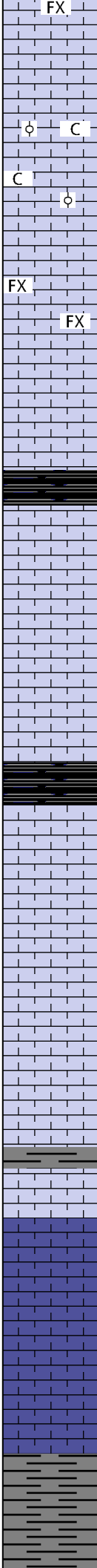
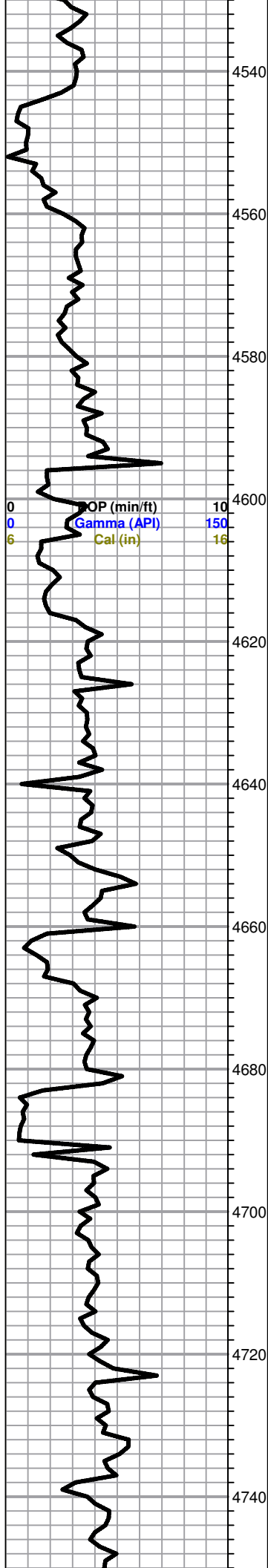
LS, tan, FXL, ool, foss, dns, no visible porosity,

LS, cream to tan, FXL, dense, cherty, poor visible porosity, trc. dark brown chert

LS, tan to cream, FXL, dense, cherty, no visible

ROP (min/ft) 10  
Gamma (API) 150  
Cal (in) 16

Total Gas (units) 50  
C1 (units) 50  
C2 (units) 50  
C3 (units) 50  
C4 (units) 50



porosity, trc. gray sh.

LS, cream to tan, chalky, poor visible porosity, no shows, few foss,

LS, tan to brown, FXL, dense, few foss, poor scattered porosity, no shows

**Stark Shale 4595 (-1777)**

Black carb shale

LS, tan to brown, FXL, dense, poor to fair scattered porosity, no shows,

LS, brown to gray, FXL, cherty, no visible porosity, dense,

Black carb shale

LS, tan chalky, poor visible porosity, trc. tan to brown  
LS, well developed ool, chalky in parts, no shows

LS, tan to white, chalky, sandy in parts, fair scattered porosity, foss, no shows,

LS, cream to tan, chalky in parts, ool, poorly developed, poor visible porosity, no shows

LS, tan to gray, FXL, cherty, dense, no visible porosity, no shows

**Marmaton 4737 (-1919)**

Sh. soft gray, black carb trc. LS, white to cream FXL dense, poor visible proosity, no shows.

