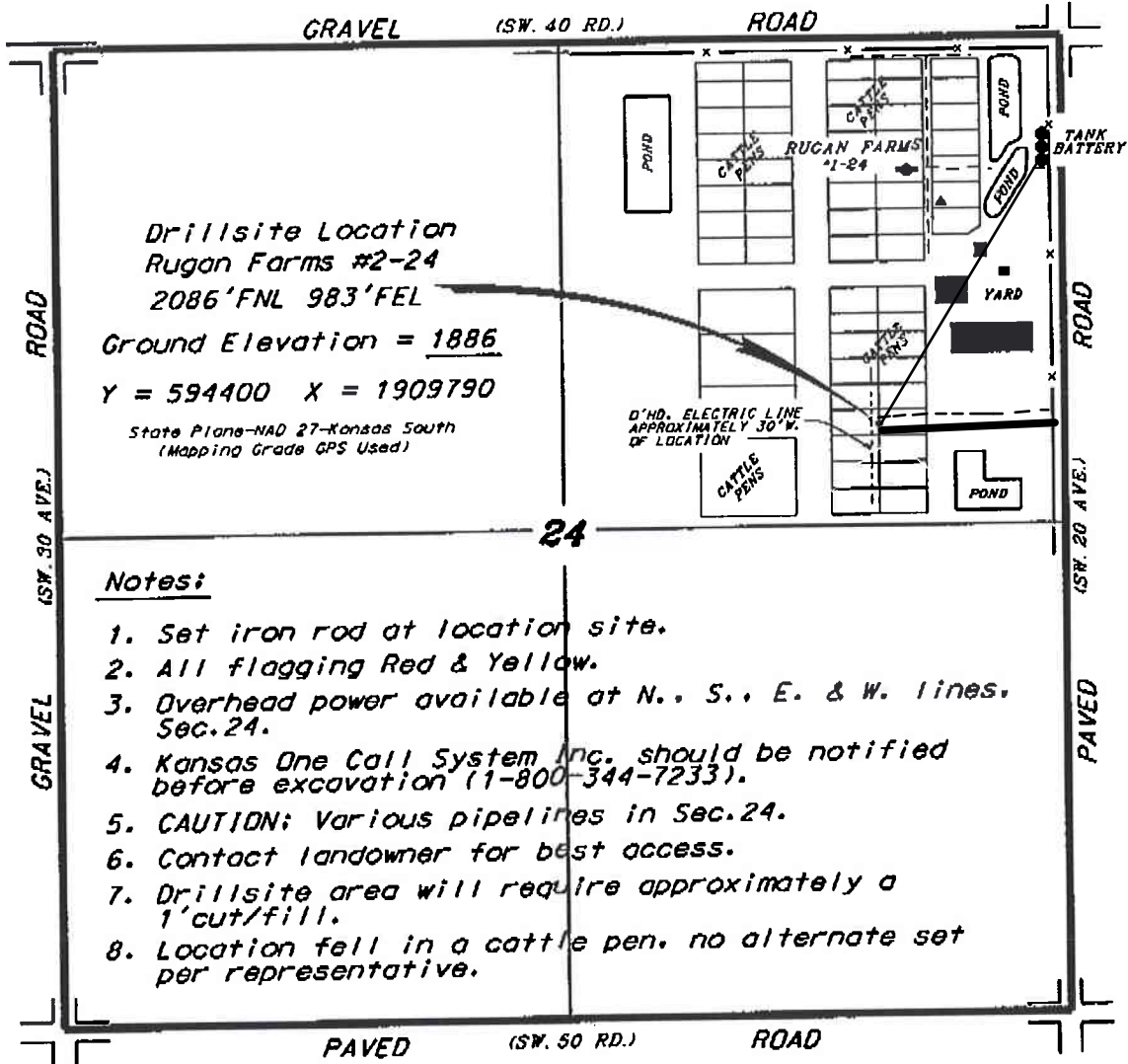


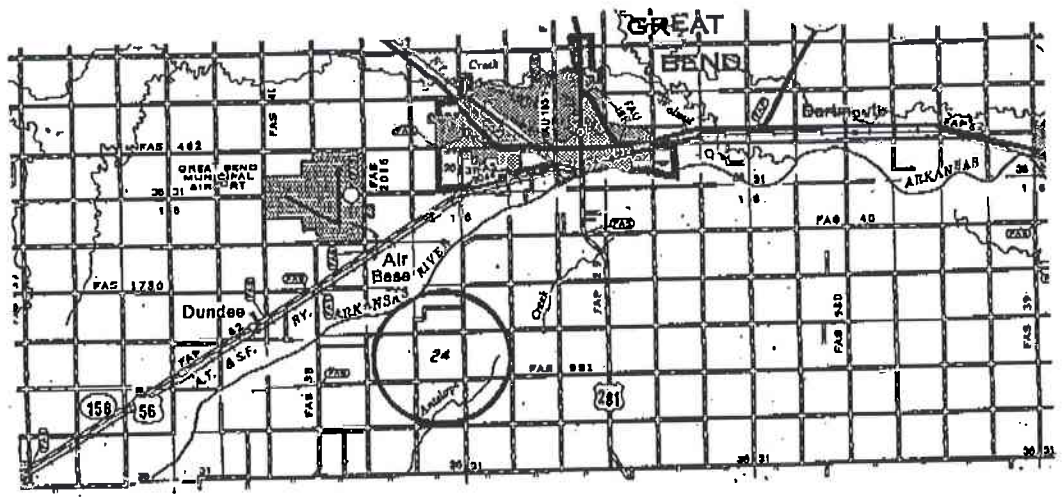
L.D. DRILLING, INC.
RUGAN FARMS LEASE
NE. 1/4, SECTION 24, T20S, R14W
BARTON COUNTY, KANSAS

Directions:

From the Intersection of Highway 281 and Highway 56-156-96 in Great Bend, Kansas go 4.0 miles South on Highway 281, then go 3.0 miles West to the NE corner of Section 24, then go 0.18 miles West, then go 0.39 miles South to location.



* Ingress and egress to location as shown on this plot is per usage only and may not be legally opened for public use. Contact landowner, tenant and county road department for access.



* Controlling data is based upon the best maps and photographs available to us and upon a regular section of land containing 640 acres.
 * Approximate section lines were determined using the normal standards of care of oilfield surveyors practicing in the state of Kansas. The section corners, which establish the precise section lines, were not necessarily located. The operator, securing this service and accepting this plot and all other parties relying thereon agree to hold Central Kansas Oilfield Services, Inc., its officers and employees harmless from all losses, costs and expenses and shall entities released from any liability from incidental or consequential damage.
 * Elevations derived from National Geodetic Vertical Datum.

Date **March 28, 2014**