



Fall & Associates

Stake and Elevation Service

719 W. 5th Street

P.O. Box 404

Concordia, KS. 66901

1-800-536-2821

Date 4-1-14

Invoice Number 0331141

GREAT PLAINS ENERGY, Inc.

Operator

10

Number

Sauvage

Farm Name

Decatur-KS

County-State

35

S

4s

T

30w

R

1400'FNL 1290'FEL

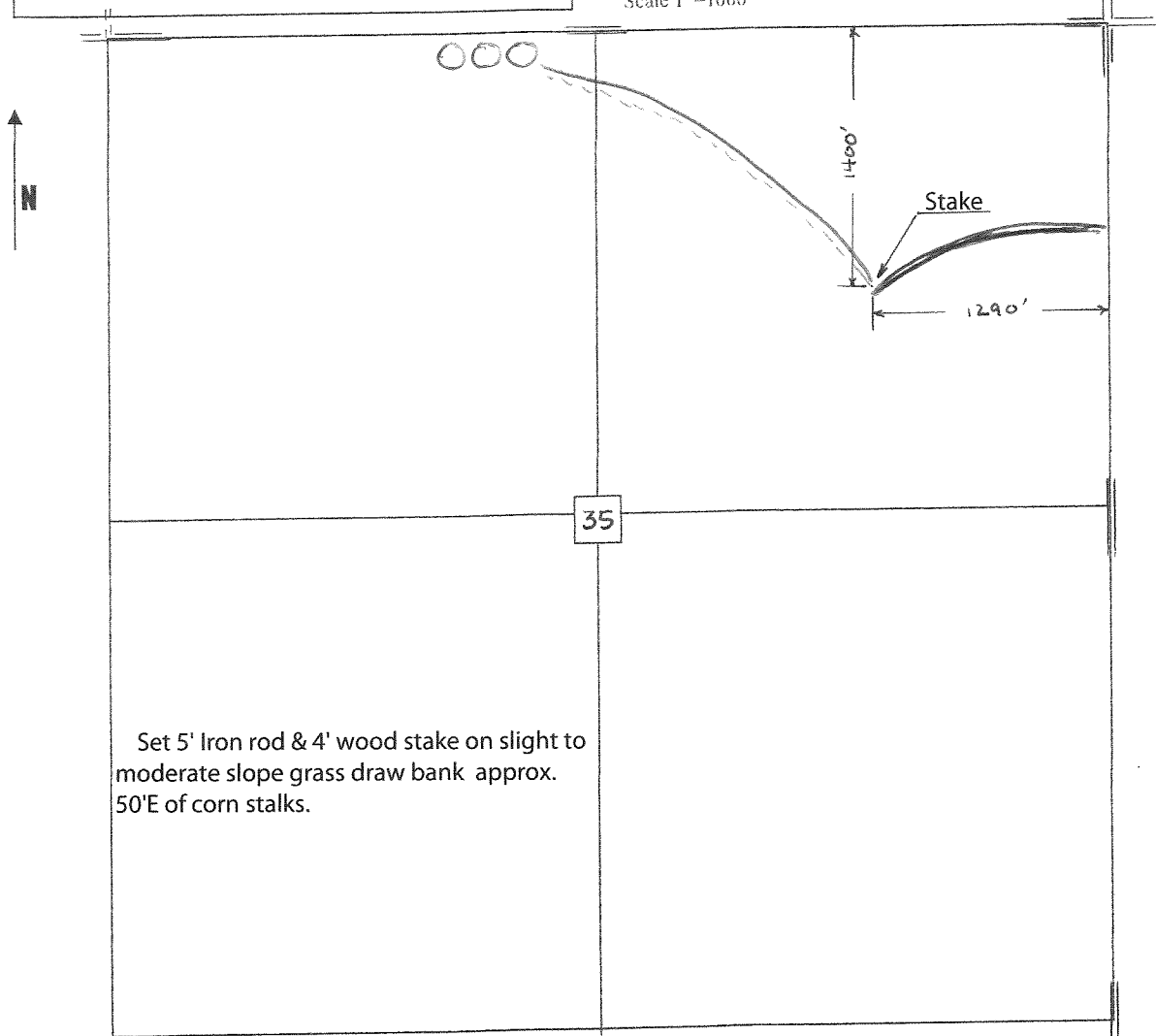
Location

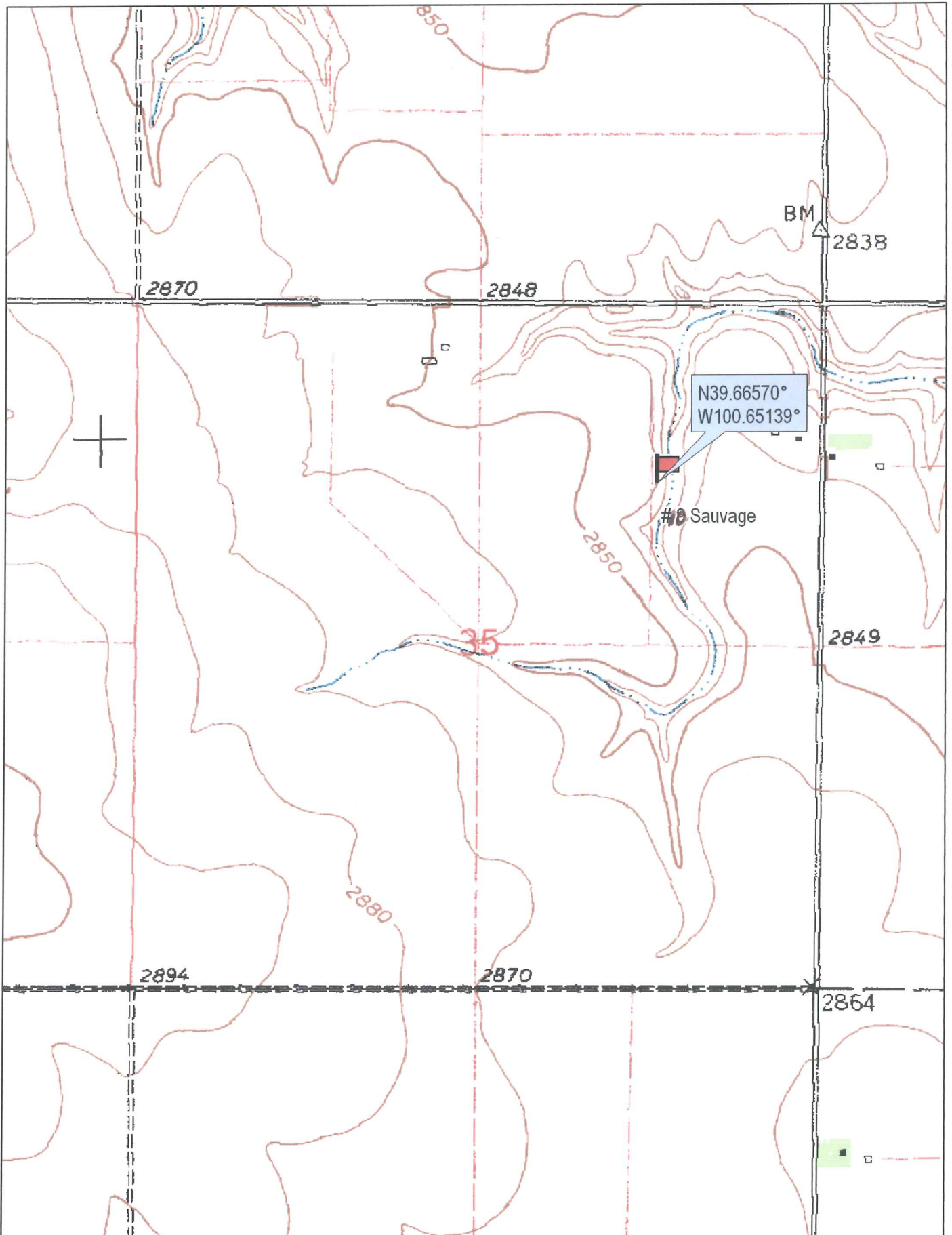
Elevation 2845 Gr.

Ordered By: Dan

Great Plains Energy, Inc.
6121 S. 58th Street
Suite B
Lincoln, NE 68516

Scale 1"=1000'





© 2002 DeLorme. 3-D TopoQuads ©. Data copyright of content owner.
www.delorme.com

Scale 1 : 12,000
1" = 1000 ft

