



Office
 (620) 592-4250 243 Main St., P.O. Box 215 - Chiles, KS 67225 Home
 Petroleum Geologist (620) 587-3444

GEOLOGIST'S REPORT

DRILLING TIME AND SAMPLE LOG

COMPANY K&N Petroleum Inc.

LEASE Snell Trust #1

FIELD Chase-Silica

LOCATION Ne-Ne-Sw-Nw (1415' ENL)
(1011' ENL)

SEC 9 TWP 20S R0E 10W

COUNTY Rice STATE Kansas

CONTRACTOR Southwind Drilling (rig #2)

SPUD 10/28/2013 COMP 11/4/2013

RTD 3415 LTO -NO log-

LOG UP 2600' TYPE LOG Chemical displaced

SAMPLES SAVED FROM 2800

DRILLING TIME KEPT FROM 2800

SAMPLES EVALUATED FROM 2800

GEOLOGICAL SUPERVISION FROM 2950

GEOLOGIST ON WELL Jim Musgrove

ELEVATIONS

KB 1816

OF 1807

GL 1807

Meas. reports Ave A / From -KB-

CASINGS 8 5/8" @ 384'

PROBE OR -None-

ELECTRICAL SURVEYS -None-

RTD

PIPE STRAP
 indicates 9 ft.
 Down hole
 Corrtm all
 sample TOP
 Contacted downhole
 9 ft.

FORMATION TOPS	LOG	SAMPLES
Heehner	No log	2939
Toronto		2959
Douglas		2970
Brown lime		3060
Wansing		3087
Base Kansas City		3354
Conglomerate		3372
Conglomerate Sand		3384
Arbuckle		3403
RTD	No log	3415 (Corrected)
		3424

REMARKS

The Snell Trust #1 was plugged & Abandoned at the RTD 3415.

Respectfully Submitted
 James E. Musgrove
 Petroleum Geologist

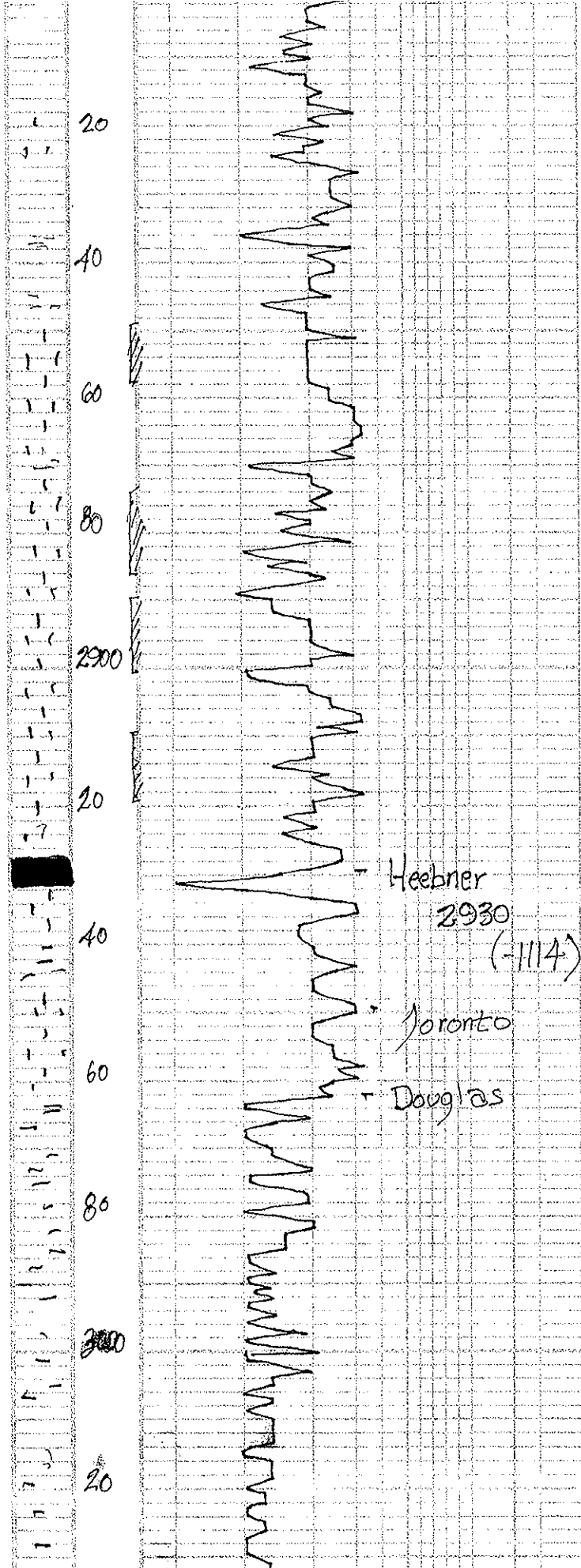
LEGEND

Anhydrite	Salt	Sandstone	Shale	Coal or	Limestone	Coal lime	Coal	Dolomite

DRILLING TIME
 Logarithmic Scale)

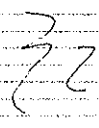
SAMPLE DESCRIPTIONS

REMARKS



blk carb. sh.

ls, wh/gry, foss, cherty in part; poor d.



ls, crm, wh, fxt, gran, few sub com, cherty, ??? dk brown str, NSG, no oden.

are gr. gry d.

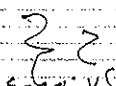
Poor samples



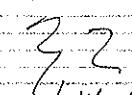
blk carb sh

Poor samples

ls, wh/crm, fxt, cherty poor v. s. g.

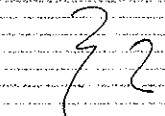


fr. sand, v. s. g, mica, shaley/sily, poorly dev.



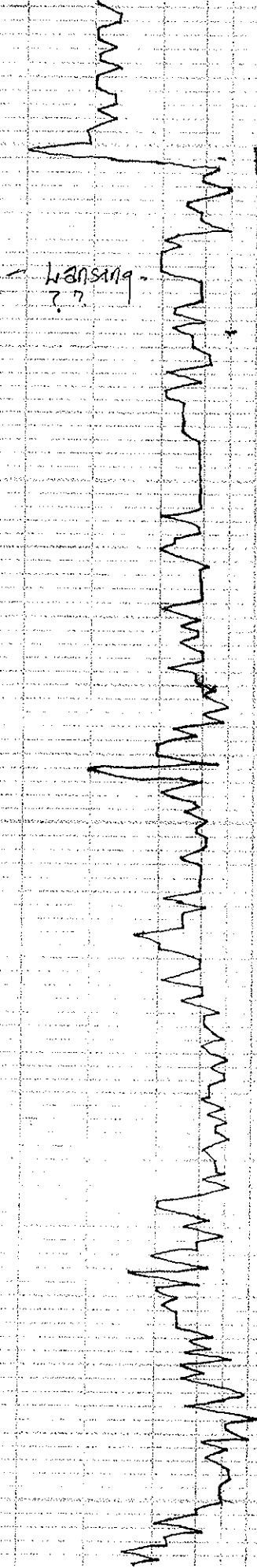
gry/dk gry = green silty soft sh

1816 KB-



ditto aa.

40
60
80
100
120
140
160
180
200
220
240
260
280
300
320
340
360
380
400
420
440
460
480
500
520
540
560
580
600
620
640
660
680
700
720
740
760
780
800
820
840
860
880
900
920
940
960
980
1000



Brown lime
3051
(-1235)

Wansing
3078 (-1262)

~ gray/dk gray soft silty sh.

3

ls, tan/brown, fr. to few
dry (dense) n/s

~ gray/dk gray + Jr.
blk carb. sh.

ls, tan, fr. to few ool,
dense n/s

3

ls, tan, gray, fossil, dense
poor n/s

3

ls, gray/tan, ool, cherty
+ wh; cherty n/s

3

ls, wh/gray, fr. to suc, cherty
in part, poor s, light
brown str; n/s for ?? nodos.

3

ls, gray; ool; cherty - dry
(dense)

~ ls, gray, wh, fr. to;
dense

~ ls, tan/dense

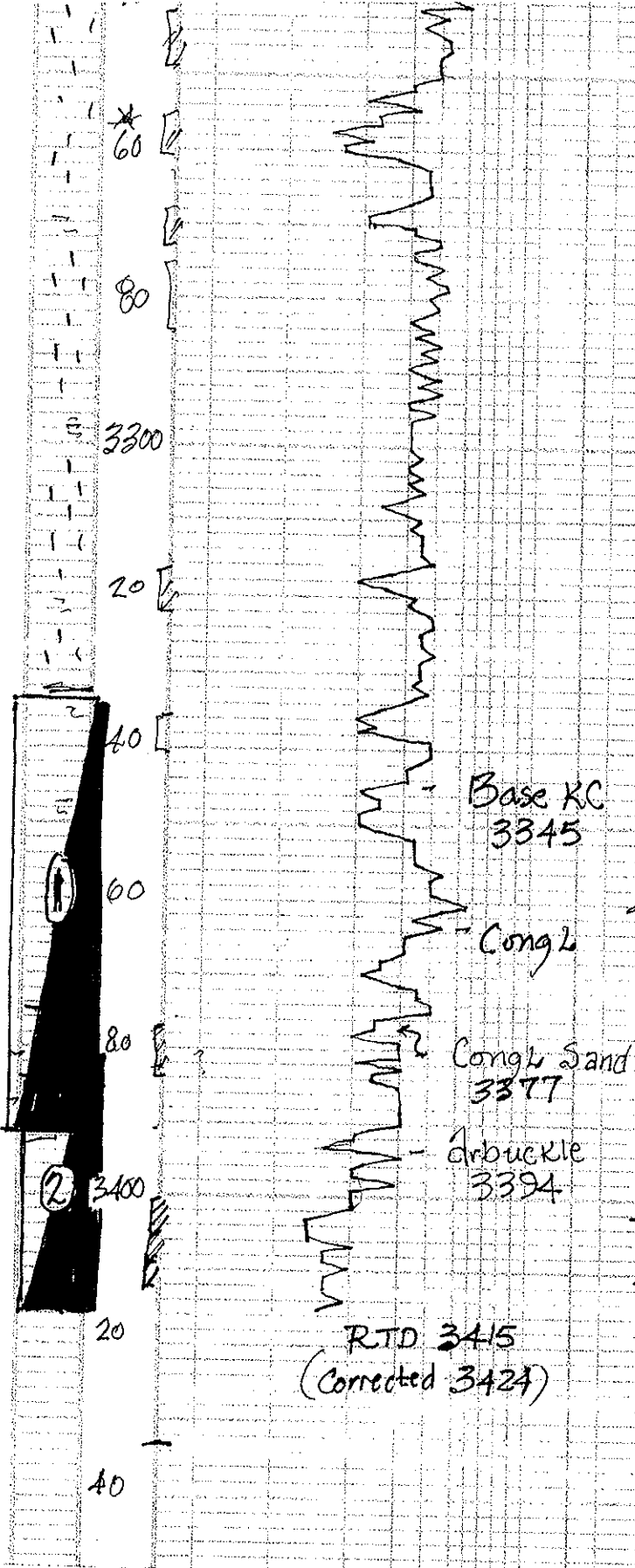
Jr. blk carb sh.

ls, wh/gray, finely ool,
few sub com cherty n/s

3

ls, gray, tan, fr. to;
dense

~ ls, tan, dense



ls, gray, tan, f-x ls
dense

ls, tan, gray, f-med
x-l) foss. s.n part dense
+ Jr. wh. foss. ls
V.C. sh brown str, Jr. fo
??? odor

ls, tan, gray, f-x
foss, chunky ten part
Jr. gray A

Poor Samples

ls, gray, tan, Jr. fcs
(samples still Poor)

V.C. silty sh

sand, yellow, qtz, sub rounded
calc. Poorly dev. m/s

St. tan, vfg. qtz, sub rounded
fossiliferous part, brown str/sats
sfo, odor samples broken
blde green sh.

obl/crm) wh f-med x-l)
chuky luster, sctto
blke str, nsfo, ft. odor.
aa, Jr. str, sfo, ??? odor

Corrected
3342-3400

Dst #1 3333-3391
20-20-30-30
Blow; surface
2nd opening; no blow
Rec; 5' mud
pressures, Isip 42 Pa
Ss; 48 "
JIP 25-26 "
JIP 29-29 "
HSH
1756
-1743 Pa

* Strap *
9" down hole
(9.31' long)
all tops
will be corrected
down hole 9'

Dst # 2 3384-3415
(Corrected 3393-3424) 30-30-45-45
Blow string
Rec) 270' muddy water
pressures / Isip 1178 Pa
Ss; 1178 "
JIP 25-65 "
JIP 69-135 "
HSH 1732-1697