



TRILOBITE TESTING, INC.

DRILL STEM TEST REPORT

K & N Petroleum Inc
 1105 Walnut
 Great Bend KS 67530
 ATTN: Wyatt Urban

7 19s 10w Rice
K & K Unit # 1
 Job Ticket: 56010 **DST#: 1**
 Test Start: 2014.02.23 @ 03:42:00

GENERAL INFORMATION:

Formation: **LKC "A - C"**
 Deviated: No Whipstock: 1781.00 ft (KB)
 Time Tool Opened: 05:35:45
 Time Test Ended: 09:48:00
 Interval: **3023.00 ft (KB) To 3065.00 ft (KB) (TVD)**
 Total Depth: 3065.00 ft (KB) (TVD)
 Hole Diameter: 7.88 inches Hole Condition: Fair

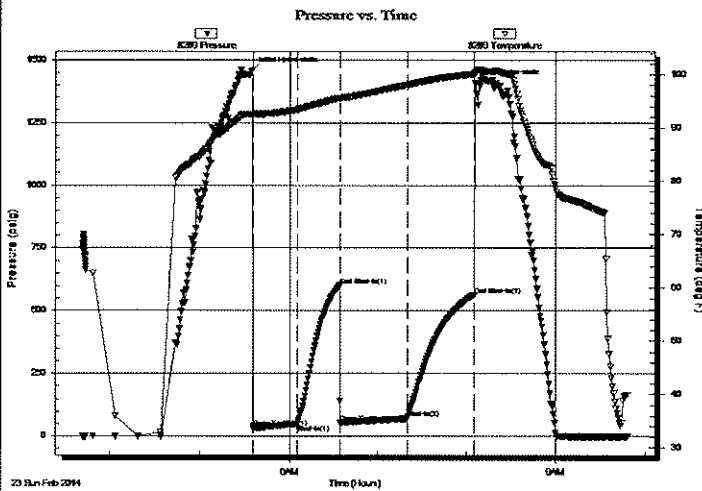
Test Type: Conventional Bottom Hole (Initial)
 Tester: Jim Svaty
 Unit No: 76
 Reference Elevations: 1781.00 ft (KB)
 1773.00 ft (CF)
 KB to GR/CF: 8.00 ft

Serial #: 8289

Outside

Press@RunDepth: 71.78 psig @ 3030.00 ft (KB) Capacity: 8000.00 psig
 Start Date: 2014.02.23 End Date: 2014.02.23 Last Calib.: 2014.02.23
 Start Time: 03:42:02 End Time: 09:48:00 Time On Btm: 2014.02.23 @ 05:35:15
 Time Off Btm: 2014.02.23 @ 08:05:45

TEST COMMENT: 30-IFP- Surface Blow Building to 6 1/2in. in 20min. Died Back in 23min.
 30-ISIP- No Blow
 45-FFP- BOB in 17min.
 45-FSIP- Surface Blow



PRESSURE SUMMARY

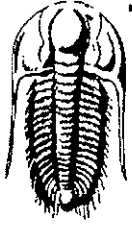
Time (Min.)	Pressure (psig)	Temp (deg F)	Annotation
0	1457.66	92.51	Initial Hydro-static
1	36.70	92.33	Open To Flow (1)
30	48.27	93.44	Shut-In(1)
59	601.81	95.62	End Shut-In(1)
60	53.33	95.49	Open To Flow (2)
105	71.78	98.10	Shut-In(2)
150	562.97	100.12	End Shut-In(2)
151	1406.34	100.43	Final Hydro-static

Recovery

Length (ft)	Description	Volume (bbl)
120.00	OSM 100%	1.68
0.00	250 GIP	0.00

Gas Rates

Choke (inches)	Pressure (psig)	Gas Rate (Mcf/d)



**TRILOBITE
TESTING, INC.**

DRILL STEM TEST REPORT

K & N Petroleum Inc
1105 Walnut
Great Bend KS 67530
ATTN: Wyatt Urban

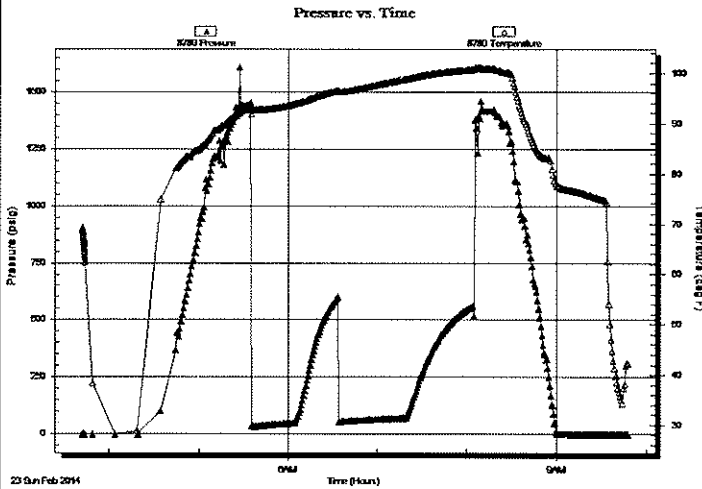
7 19s 10w Rice
K & K Unit # 1
Job Ticket: 56010 **DST#: 1**
Test Start: 2014.02.23 @ 03:42:00

GENERAL INFORMATION:

Formation: **LKC " A - C "**
Deviated: No Whipstock: 1781.00 ft (KB) Test Type: Conventional Bottom Hole (Initial)
Time Tool Opened: 05:35:45 Tester: Jim Svaty
Time Test Ended: 09:48:00 Unit No: 76
Interval: **3023.00 ft (KB) To 3065.00 ft (KB) (TVD)** Reference Elevations: 1781.00 ft (KB)
Total Depth: 3065.00 ft (KB) (TVD) 1773.00 ft (CF)
Hole Diameter: 7.88 inchesHole Condition: Fair KB to GR/CF: 8.00 ft

Serial #: 8789 Inside
Press@RunDepth: psig @ 3030.00 ft (KB) Capacity: 8000.00 psig
Start Date: 2014.02.23 End Date: 2014.02.23 Last Calib.: 2014.02.23
Start Time: 03:42:02 End Time: 09:47:45 Time On Btm:
Time Off Btm:

TEST COMMENT: 30-IFP- Surface Blow Building to 6 1/2in. in 20min. Died Back in 23min.
30-ISIP- No Blow
45-FFP- BOB in 17min.
45-FSIP- Surface Blow



PRESSURE SUMMARY			
Time (Min.)	Pressure (psig)	Temp (deg F)	Annotation

Recovery		
Length (ft)	Description	Volume (bbl)
120.00	OSM 100%	1.68
0.00	250 GIP	0.00

Gas Rates			
	Choke (inches)	Pressure (psig)	Gas Rate (Mcf/d)

Serial #: 8289

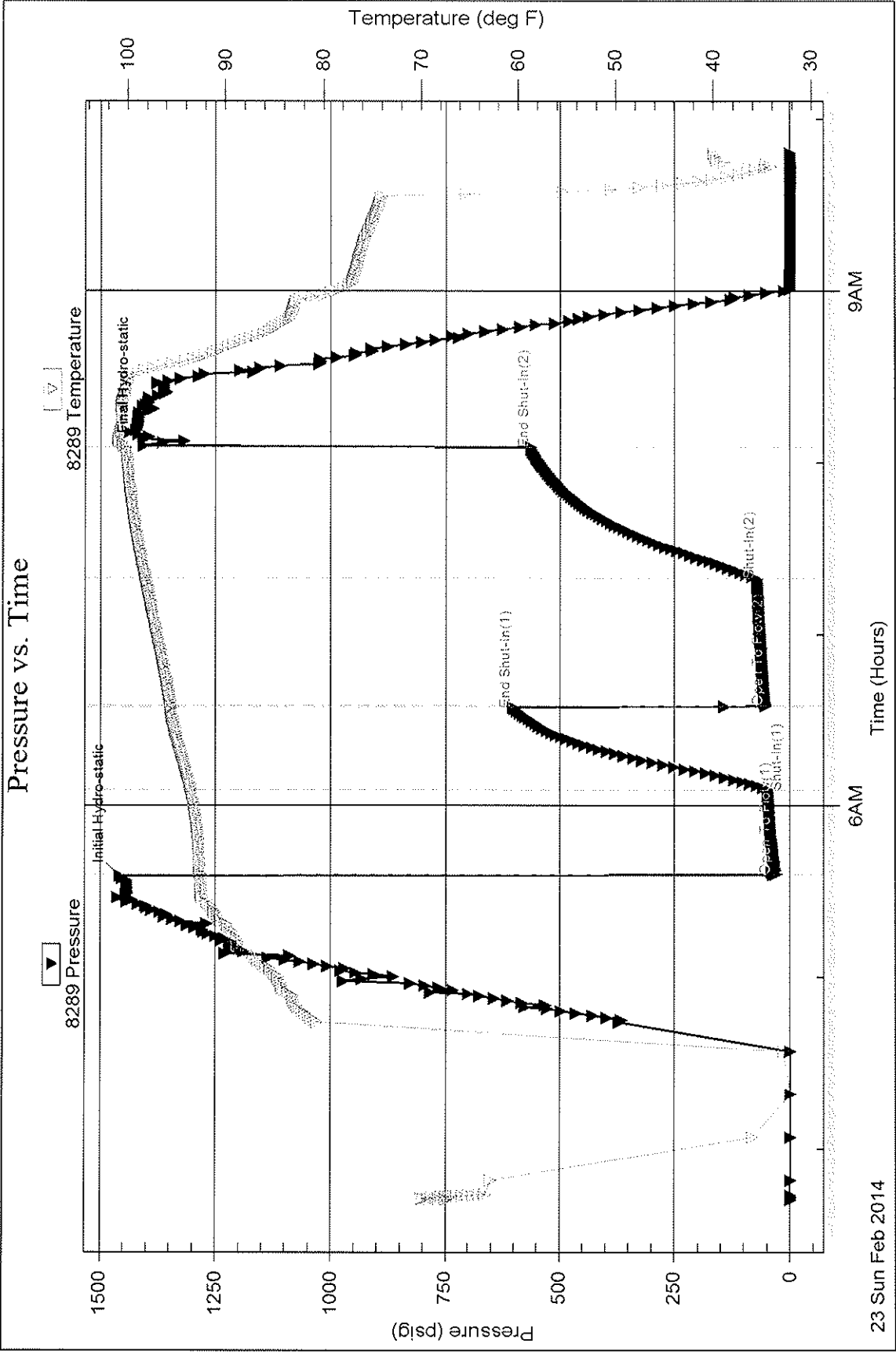
Outside

K & N Petroleum Inc

K & K Unit # 1

DST Test Number: 1

Pressure vs. Time



Tribotite Testing, Inc

Ref. No: 56010

Printed: 2014.02.23 @ 10:34:16

Serial #: 8789

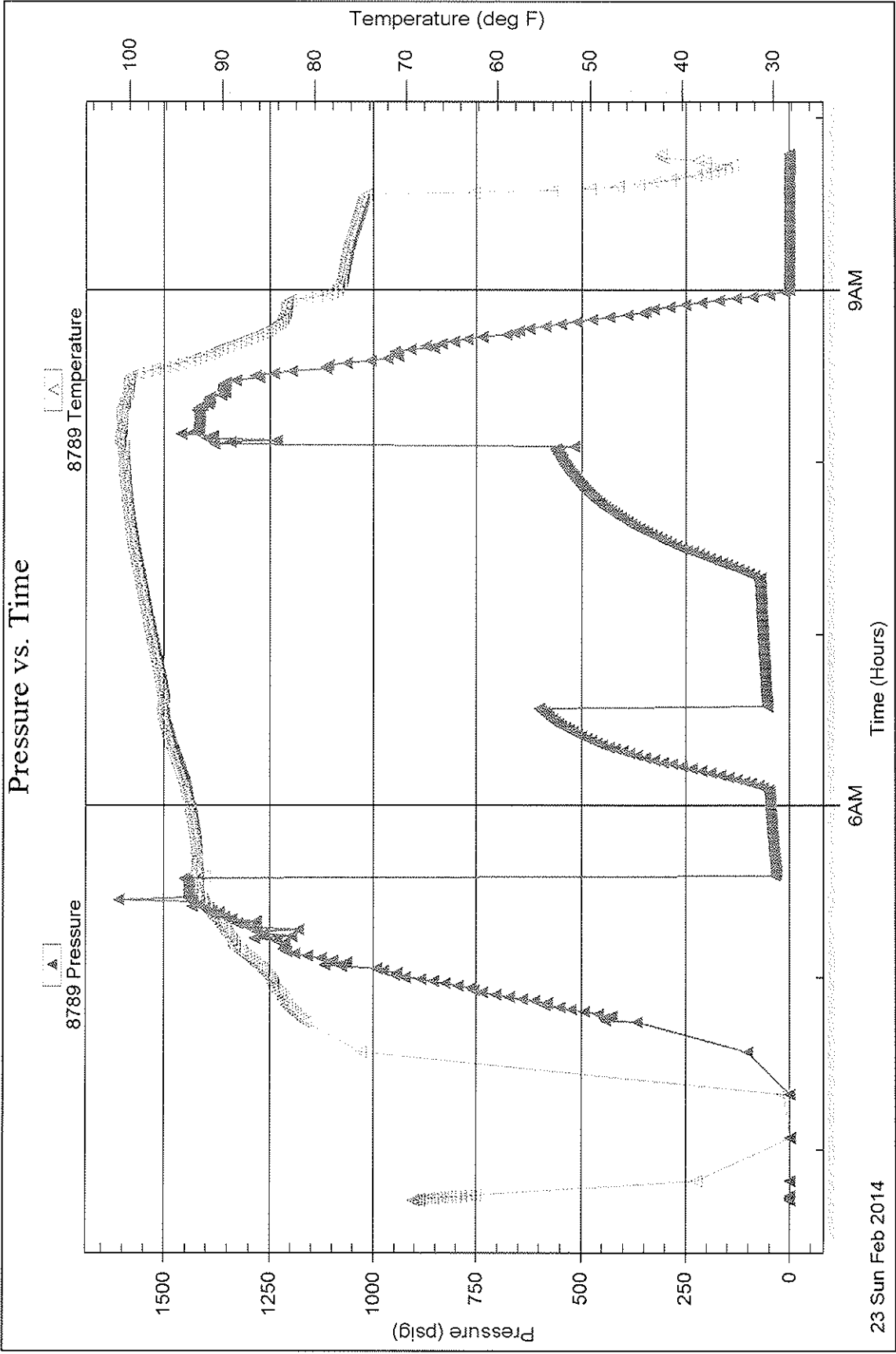
Inside

K & N Petroleum Inc

K & K Unit # 1

DST Test Number: 1

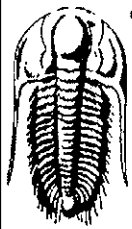
Pressure vs. Time



23 Sun Feb 2014

9AM

6AM



TRILOBITE TESTING, INC.

DRILL STEM TEST REPORT

K & N Petroleum Inc
 1105 Walnut
 Great Bend KS 67530
 ATTN: Wyatt Urban

7 19s 10w Rice
K & K Unit # 1
 Job Ticket: 56011 **DST#: 2**
 Test Start: 2014.02.24 @ 16:00:00

GENERAL INFORMATION:

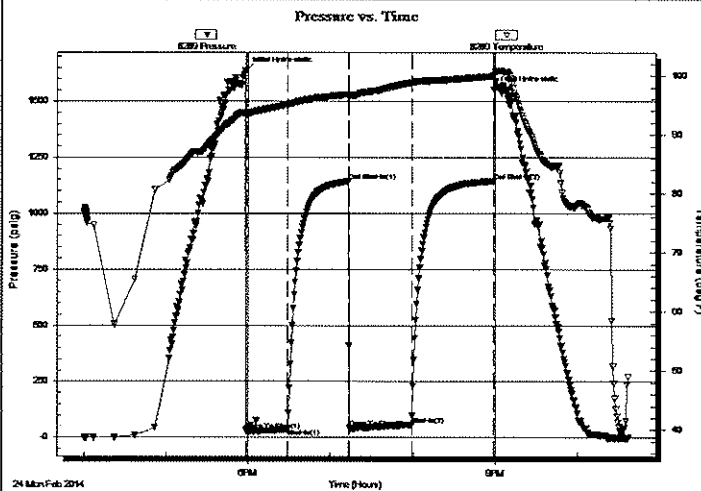
Formation: **Arbuckle**
 Deviated: No Whipstock: 1781.00 ft (KB)
 Time Tool Opened: 17:58:30
 Time Test Ended: 22:38:00
 Interval: **3288.00 ft (KB) To 3391.00 ft (KB) (TVD)**
 Total Depth: 3391.00 ft (KB) (TVD)
 Hole Diameter: 7.88 inches Hole Condition: Fair
 Test Type: Conventional Bottom Hole (Reset)
 Tester: Jim Svaty
 Unit No: 76
 Reference Elevations: 1781.00 ft (KB)
 1773.00 ft (CF)
 KB to GR/CF: 8.00 ft

Serial #: 8289

Outside

Press@RunDepth: 57.86 psig @ 3297.00 ft (KB)
 Start Date: 2014.02.24 End Date: 2014.02.24
 Start Time: 16:00:02 End Time: 22:38:00
 Capacity: 8000.00 psig
 Last Calib.: 2014.02.24
 Time On Btm: 2014.02.24 @ 17:58:15
 Time Off Btm: 2014.02.24 @ 20:58:45

TEST COMMENT: 30-IFP- Surface Blow Building to 4 1/4in.
 45-ISIP- No Blow
 45-FFP- Surface Blow Building to 3in.
 60-DSIP- No Blow



PRESSURE SUMMARY

Time (Min.)	Pressure (psig)	Temp (deg F)	Annotation
0	1636.57	93.74	Initial Hydro-static
1	30.42	93.26	Open To Flow (1)
31	37.23	95.05	Shut-In(1)
75	1141.57	96.83	End Shut-In(1)
76	41.96	96.58	Open To Flow (2)
120	57.86	98.80	Shut-In(2)
180	1143.56	99.93	End Shut-In(2)
181	1551.57	100.06	Final Hydro-static

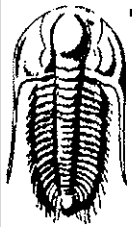
Recovery

Length (ft)	Description	Volume (bbl)
75.00	Mud 100%	1.05

* Recovery from multiple tests

Gas Rates

Choke (inches)	Pressure (psig)	Gas Rate (Mcf/d)



**TRILOBITE
TESTING, INC.**

DRILL STEM TEST REPORT

FLUID SUMMARY

K & N Petroleum Inc
1105 Walnut
Great Bend KS 67530
ATTN: Wyatt Urban

7 19s 10w Rice
K & K Unit # 1
Job Ticket: 56011 **DST#: 2**
Test Start: 2014.02.24 @ 16:00:00

Mud and Cushion Information

Mud Type: Gel Chem	Cushion Type:	Oil API:	deg API
Mud Weight: 9.00 lb/gal	Cushion Length:	Water Salinity:	ppm
Viscosity: 44.00 sec/qt	ft		
Water Loss: 8.38 in ³	Cushion Volume:		
Resistivity: ohm.m	Gas Cushion Type:		
Salinity: 7000.00 ppm	Gas Cushion Pressure:		
Filter Cake: inches	psig		

Recovery Information

Recovery Table

Length ft	Description	Volume bbl
75.00	Mud 100%	1.052

Total Length: 75.00 ft Total Volume: 1.052 bbl
 Num Fluid Samples: 0 Num Gas Bombs: 0 Serial #:
 Laboratory Name: Laboratory Location:
 Recovery Comments:

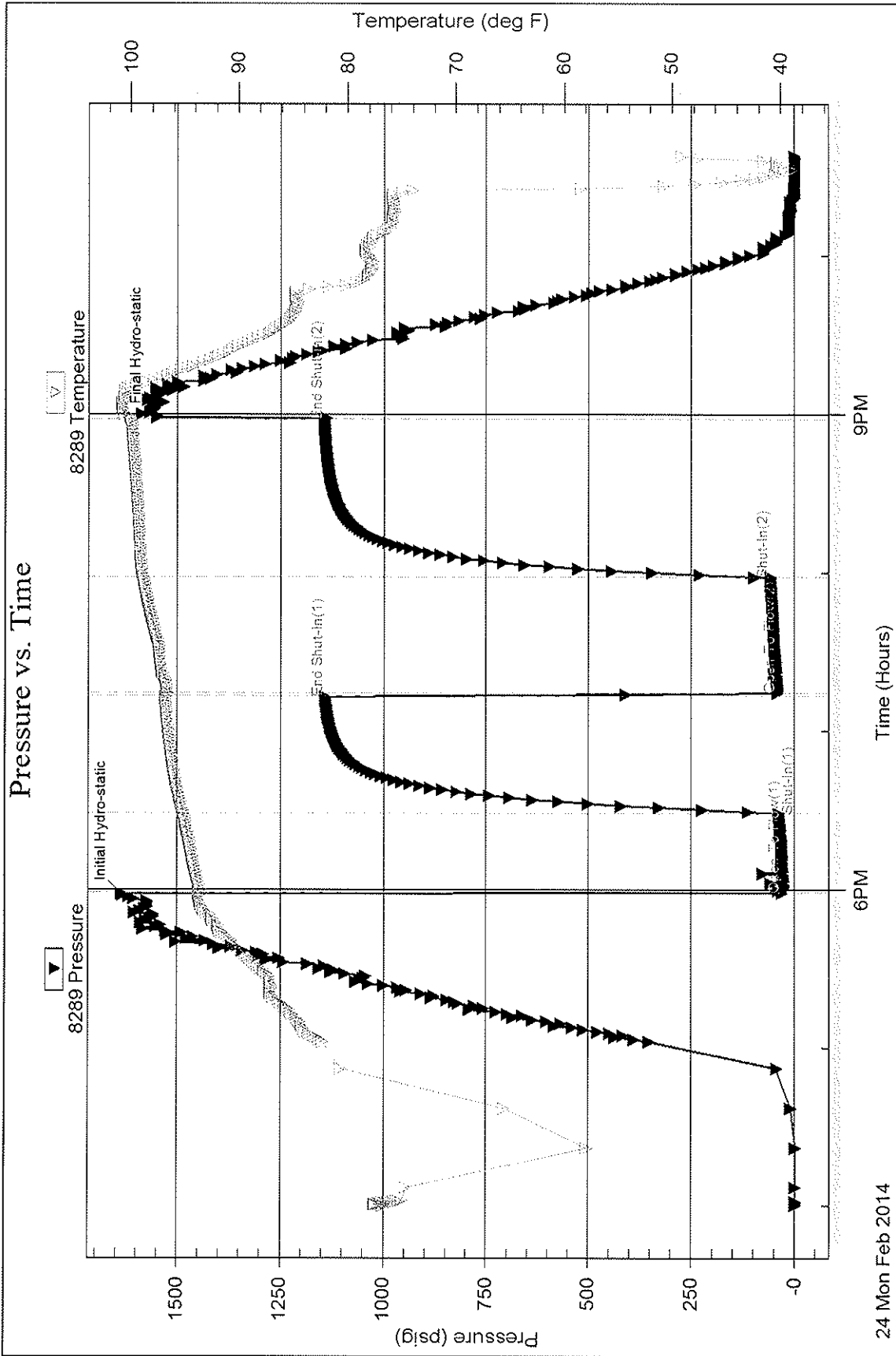
Serial #: 8289

Outside

K & N Petroleum Inc

K & K Unit # 1

DST Test Number: 2



24 Mon Feb 2014

6PM

Time (Hours)

9PM

Trilobite Testing, Inc

Ref. No: 56011

Printed: 2014.02.24 @ 23:13:01