



DRILL STEM TEST REPORT

Prepared For: **Bach Oil Production**

P.O. Box 723
Alma, NE 68920

ATTN: Bob Peterson ,Jason

Donna Fae Well #1

17-2s-19w Phillips,KS

Start Date: 2014.01.15 @ 00:40:01

End Date: 2014.01.15 @ 07:13:40

Job Ticket #: 55472 DST #: 1

Trilobite Testing, Inc
PO Box 362 Hays, KS 67601
ph: 785-625-4778 fax: 785-625-5620

Printed: 2014.01.17 @ 15:05:46



**TRILOBITE
TESTING, INC**

DRILL STEM TEST REPORT

Bach Oil Production

17-2s-19w Phillips,KS

P.O. Box 723
Alma, NE 68920

Donna Fae Well #1

ATTN: Bob Peterson, Jason

Job Ticket: 55472

DST#: 1

Test Start: 2014.01.15 @ 00:40:01

GENERAL INFORMATION:

Formation: **LKC A-D**

Deviated: No Whipstock: ft (KB)

Time Tool Opened: 02:44:51

Time Test Ended: 07:13:40

Test Type: Conventional Bottom Hole (Initial)

Tester: Tim Phillips

Unit No: 70

Interval: 3430.00 ft (KB) To 3500.00 ft (KB) (TVD)

Reference Elevations: 2202.00 ft (KB)

Total Depth: 3500.00 ft (KB) (TVD)

2197.00 ft (CF)

Hole Diameter: 7.85 inches Hole Condition: Good

KB to GR/CF: 5.00 ft

Serial #: 8369 Outside

Press@RunDepth: 88.42 psig @ 3431.00 ft (KB)

Capacity: 8000.00 psig

Start Date: 2014.01.15 End Date: 2014.01.15

Last Calib.: 2014.01.15

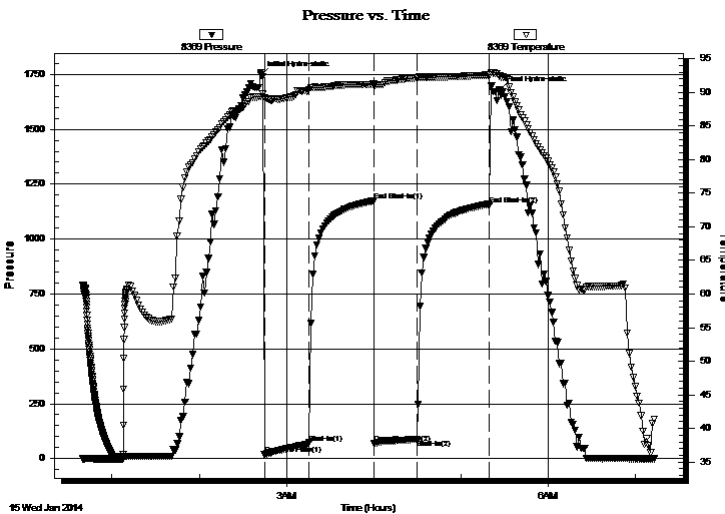
Start Time: 00:40:02 End Time: 07:13:41

Time On Btm: 2014.01.15 @ 02:42:21

Time Off Btm: 2014.01.15 @ 05:26:21

TEST COMMENT: IFP-30-Medium blow built to 4 1/2"
ISI-45-Dead no blow back
FF-30-Medium blow built to 3 1/2"
FSI-45-Dead no blow back

PRESSURE SUMMARY



Time (Min.)	Pressure (psig)	Temp (deg F)	Annotation
0	1746.40	89.41	Initial Hydro-static
3	18.34	89.24	Open To Flow (1)
33	68.71	90.46	Shut-In(1)
78	1174.31	91.22	End Shut-In(1)
78	71.21	90.92	Open To Flow (2)
108	88.42	92.18	Shut-In(2)
158	1156.85	92.58	End Shut-In(2)
164	1675.57	92.46	Final Hydro-static

Recovery

Length (ft)	Description	Volume (bbl)
170.00	100% Mud	1.23

Gas Rates

	Choke (inches)	Pressure (psig)	Gas Rate (Mcf/d)



TRILOBITE TESTING, INC.

DRILL STEM TEST REPORT

Bach Oil Production

17-2s-19w Phillips,KS

P.O. Box 723
Alma, NE 68920

Donna Fae Well #1

ATTN: Bob Peterson, Jason

Job Ticket: 55472

DST#: 1

Test Start: 2014.01.15 @ 00:40:01

GENERAL INFORMATION:

Formation: **LKC A-D**

Deviated: No Whipstock: ft (KB)

Time Tool Opened: 02:44:51

Time Test Ended: 07:13:40

Interval: 3430.00 ft (KB) To 3500.00 ft (KB) (TVD)

Total Depth: 3500.00 ft (KB) (TVD)

Hole Diameter: 7.85 inches Hole Condition: Good

Test Type: Conventional Bottom Hole (Initial)

Tester: Tim Phillips

Unit No: 70

Reference Elevations: 2202.00 ft (KB)

2197.00 ft (CF)

KB to GR/CF: 5.00 ft

Serial #: 8700 Inside

Press@RunDepth: psig @ 3431.00 ft (KB)

Start Date: 2014.01.15

End Date:

2014.01.15

Start Time: 00:45:01

End Time:

08:13:39

Capacity: 8000.00 psig

Last Calib.:

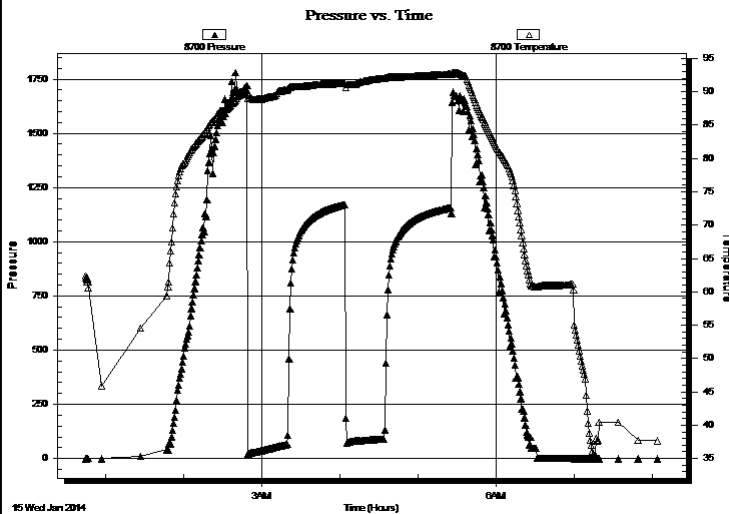
2014.01.15

Time On Btm:

Time Off Btm:

TEST COMMENT: IFP-30-Medium blow built to 4 1/2"
ISI-45-Dead no blow back
FF-30-Medium blow built to 3 1/2"
FSI-45-Dead no blow back

PRESSURE SUMMARY



Time (Min.)	Pressure (psig)	Temp (deg F)	Annotation

Recovery

Length (ft)	Description	Volume (bbl)
170.00	100% Mud	1.23

Gas Rates

Choke (inches)	Pressure (psig)	Gas Rate (Mcf/d)



**TRILOBITE
TESTING, INC**

DRILL STEM TEST REPORT

TOOL DIAGRAM

Bach Oil Production

17-2s-19w Phillips,KS

P.O. Box 723
Alma, NE 68920

Donna Fae Well #1

Job Ticket: 55472

DST#: 1

ATTN: Bob Peterson ,Jason

Test Start: 2014.01.15 @ 00:40:01

Tool Information

Drill Pipe:	Length: 3288.00 ft	Diameter: 3.80 inches	Volume: 46.12 bbl	Tool Weight:	2500.00 lb
Heavy Wt. Pipe:	Length: ft	Diameter: 2.75 inches	Volume: - bbl	Weight set on Packer:	26000.00 lb
Drill Collar:	Length: 127.00 ft	Diameter: 2.25 inches	Volume: 0.62 bbl	Weight to Pull Loose:	lb
			<u>Total Volume:</u>	Tool Chased	0.00 ft
			- bbl	String Weight: Initial	46000.00 lb
Drill Pipe Above KB:	13.00 ft			Final	lb
Depth to Top Packer:	3430.00 ft				
Depth to Bottom Packer:	ft				
Interval between Packers:	70.00 ft				
Tool Length:	98.00 ft				
Number of Packers:	2	Diameter:	6.75 inches		
Tool Comments:					

Tool Description

Tool Description	Length (ft)	Serial No.	Position	Depth (ft)	Accum. Lengths
Change Over Sub	1.00			3403.00	
Shut In Tool	5.00			3408.00	
Hydraulic tool	5.00			3413.00	
Jars	5.00			3418.00	
Safety Joint	2.00			3420.00	
Packer	5.00			3425.00	28.00 Bottom Of Top Packer
Packer	5.00			3430.00	
Stubb	1.00			3431.00	
Recorder	0.00	8700	Inside	3431.00	
Recorder	0.00	8369	Outside	3431.00	
Perforations	33.00			3464.00	
Change Over Sub	1.00			3465.00	
Drill Pipe	31.00			3496.00	
Change Over Sub	1.00			3497.00	
Bullnose	3.00			3500.00	70.00 Bottom Packers & Anchor

Total Tool Length: 98.00



**TRILOBITE
TESTING, INC**

DRILL STEM TEST REPORT

FLUID SUMMARY

Bach Oil Production

17-2s-19w Phillips,KS

P.O. Box 723
Alma, NE 68920

Donna Fae Well #1

Job Ticket: 55472

DST#: 1

ATTN: Bob Peterson ,Jason

Test Start: 2014.01.15 @ 00:40:01

Mud and Cushion Information

Mud Type: Gel Chem

Cushion Type:

Oil API:

deg API

Mud Weight: 9.00 lb/gal

Cushion Length:

ft

Water Salinity:

ppm

Viscosity: 57.00 sec/qt

Cushion Volume:

bbbl

Water Loss: 4.77 in³

Gas Cushion Type:

Resistivity: ohm.m

Gas Cushion Pressure:

psig

Salinity: 3000.00 ppm

Filter Cake: 1.00 inches

Recovery Information

Recovery Table

Length ft	Description	Volume bbl
170.00	100% Mud	1.228

Total Length: 170.00 ft Total Volume: 1.228 bbl

Num Fluid Samples: 0

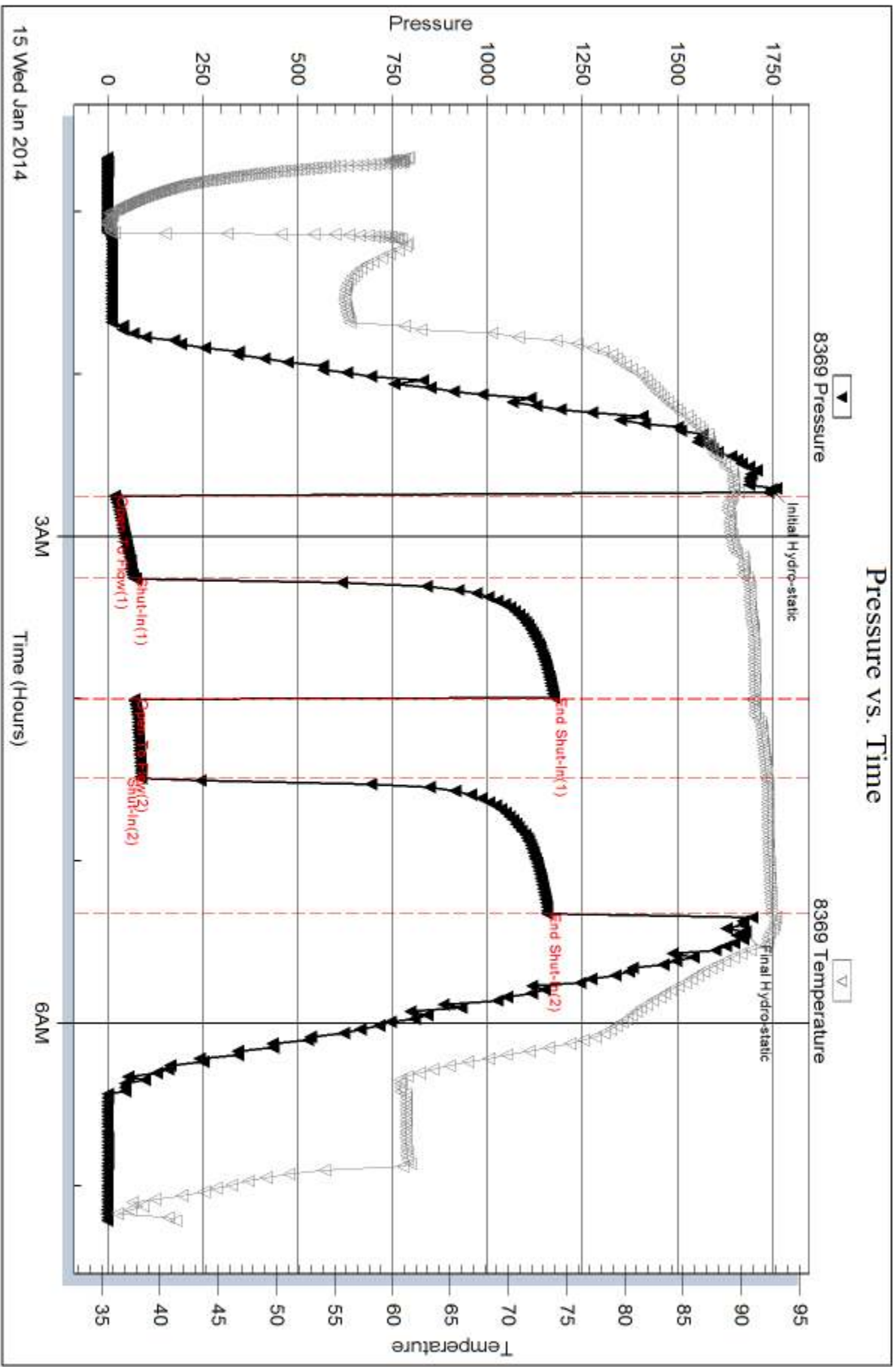
Num Gas Bombs: 0

Serial #:

Laboratory Name:

Laboratory Location:

Recovery Comments:



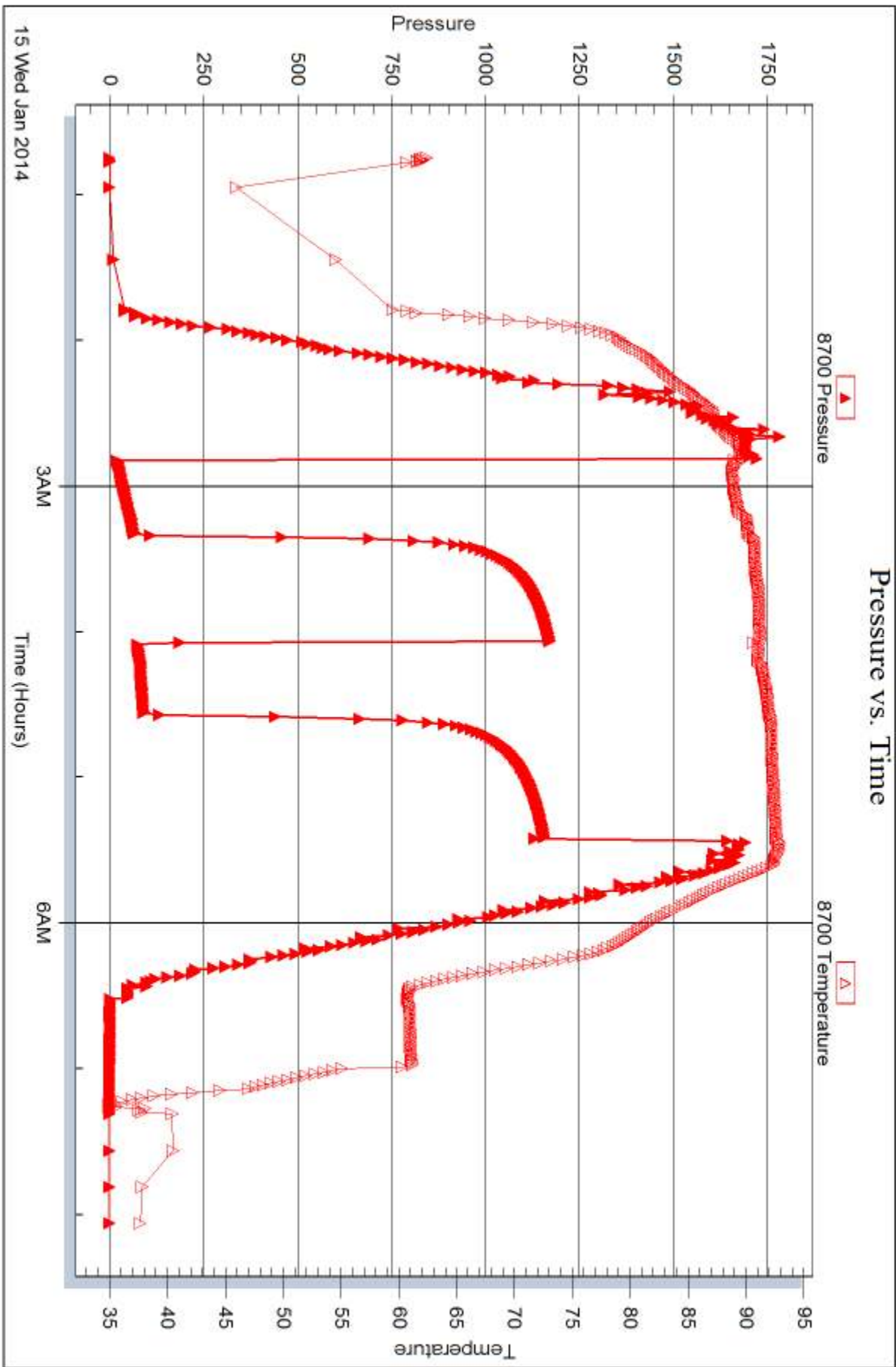
Serial #: 8700

Inside

Bach Oil Production

Donna Fae Well #1

DST Test Number: 1





DRILL STEM TEST REPORT

Prepared For: **Bach Oil Production**

P.O. Box 723
Alma, NE 68920

ATTN: Bob Peterson ,Jason

Donna Fae Well #1

17-2s-19w Phillips,KS

Start Date: 2014.01.15 @ 12:47:33

End Date: 2014.01.15 @ 23:33:33

Job Ticket #: 55473 DST #: 2

Trilobite Testing, Inc
PO Box 362 Hays, KS 67601
ph: 785-625-4778 fax: 785-625-5620

Printed: 2014.01.17 @ 15:04:49



**TRILOBITE
TESTING, INC**

DRILL STEM TEST REPORT

Bach Oil Production

17-2s-19w Phillips,KS

P.O. Box 723
Alma, NE 68920

Donna Fae Well #1

ATTN: Bob Peterson ,Jason

Job Ticket: 55473

DST#: 2

Test Start: 2014.01.15 @ 12:47:33

GENERAL INFORMATION:

Formation: **LKC F**
 Deviated: No Whipstock: ft (KB)
 Time Tool Opened: 18:43:13
 Time Test Ended: 23:33:33
 Interval: **3497.00 ft (KB) To 3525.00 ft (KB) (TVD)**
 Total Depth: 3525.00 ft (KB) (TVD)
 Hole Diameter: 7.85 inches Hole Condition: Good
 Test Type: Conventional Bottom Hole (Reset)
 Tester: Tim Phillips
 Unit No: 70
 Reference Elevations: 2202.00 ft (KB)
 2197.00 ft (CF)
 KB to GR/CF: 5.00 ft

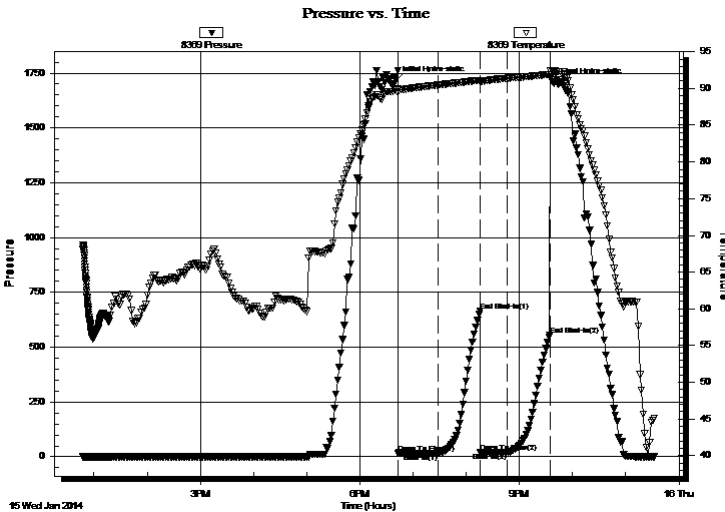
Serial #: 8369

Inside

Press@RunDepth: 19.97 psig @ 3498.00 ft (KB) Capacity: 8000.00 psig
 Start Date: 2014.01.15 End Date: 2014.01.15 Last Calib.: 2014.01.16
 Start Time: 12:47:34 End Time: 23:33:33 Time On Btm: 2014.01.15 @ 18:40:42
 Time Off Btm: 2014.01.15 @ 21:39:13

TEST COMMENT: IFP-45-Weak blow built to 3/8"
 ISI-45-Dead no blow back
 FF-30-Dead no blow
 FSI-45-Dead no blow back

PRESSURE SUMMARY



Time (Min.)	Pressure (psig)	Temp (deg F)	Annotation
0	1714.57	89.83	Initial Hydro-static
3	17.05	89.41	Open To Flow (1)
48	17.21	90.48	Shut-In(1)
95	663.42	91.12	End Shut-In(1)
96	20.14	90.86	Open To Flow (2)
126	19.97	91.38	Shut-In(2)
174	555.97	91.91	End Shut-In(2)
179	1704.89	92.36	Final Hydro-static

Recovery

Length (ft)	Description	Volume (bbl)
5.00	VSOCM 2%Oil, 98%Mud	0.02
1.00	Free Oil 100% Oil	0.00

* Recovery from multiple tests

Gas Rates

	Choke (inches)	Pressure (psig)	Gas Rate (Mcf/d)



TRILOBITE TESTING, INC

DRILL STEM TEST REPORT

Bach Oil Production

17-2s-19w Phillips,KS

P.O. Box 723
Alma, NE 68920

Donna Fae Well #1

Job Ticket: 55473 **DST#: 2**

ATTN: Bob Peterson, Jason

Test Start: 2014.01.15 @ 12:47:33

GENERAL INFORMATION:

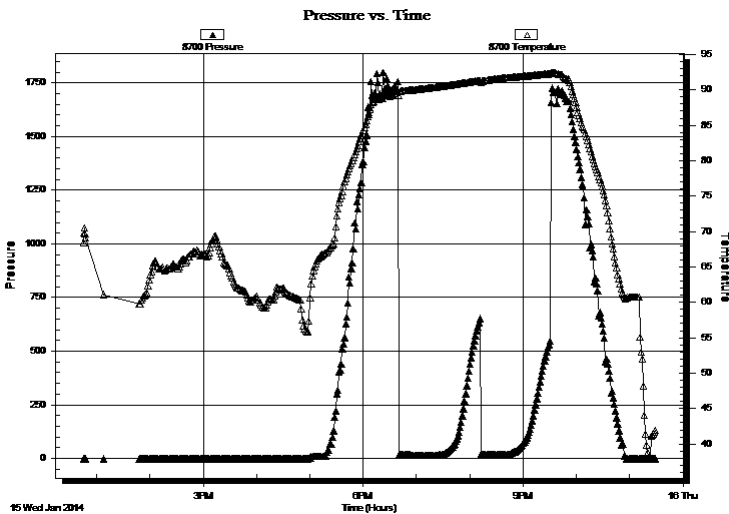
Formation: **LKC F**
 Deviated: No Whipstock: ft (KB) Test Type: Conventional Bottom Hole (Reset)
 Time Tool Opened: 18:43:13 Tester: Tim Phillips
 Time Test Ended: 23:33:33 Unit No: 70
Interval: 3497.00 ft (KB) To 3525.00 ft (KB) (TVD) Reference Elevations: 2202.00 ft (KB)
 Total Depth: 3525.00 ft (KB) (TVD) 2197.00 ft (CF)
 Hole Diameter: 7.85 inches Hole Condition: Good KB to GR/CF: 5.00 ft

Serial #: 8700

Outside

Press@RunDepth: psig @ 3498.00 ft (KB) Capacity: 8000.00 psig
 Start Date: 2014.01.15 End Date: 2014.01.15 Last Calib.: 2014.01.16
 Start Time: 12:45:39 End Time: 23:29:49 Time On Btm:
 Time Off Btm:

TEST COMMENT: IFP-45-Weak blow built to 3/8"
 ISI-45-Dead no blow back
 FF-30-Dead no blow
 FSI-45-Dead no blow back



PRESSURE SUMMARY

Time (Min.)	Pressure (psig)	Temp (deg F)	Annotation

Recovery

Length (ft)	Description	Volume (bbl)
5.00	VSOCM 2%Oil, 98%Mud	0.02
1.00	Free Oil 100% Oil	0.00

* Recovery from multiple tests

Gas Rates

	Choke (inches)	Pressure (psig)	Gas Rate (Mcf/d)



**TRILOBITE
TESTING, INC**

DRILL STEM TEST REPORT

TOOL DIAGRAM

Bach Oil Production

17-2s-19w Phillips,KS

P.O. Box 723
Alma, NE 68920

Donna Fae Well #1

Job Ticket: 55473

DST#: 2

ATTN: Bob Peterson ,Jason

Test Start: 2014.01.15 @ 12:47:33

Tool Information

Drill Pipe:	Length: 3369.00 ft	Diameter: 3.80 inches	Volume: 47.26 bbl	Tool Weight:	2500.00 lb
Heavy Wt. Pipe:	Length: 0.00 ft	Diameter: 2.75 inches	Volume: 0.00 bbl	Weight set on Packer:	26000.00 lb
Drill Collar:	Length: 127.00 ft	Diameter: 2.25 inches	Volume: 0.62 bbl	Weight to Pull Loose:	lb
			<u>Total Volume: 47.88 bbl</u>	Tool Chased	0.00 ft
Drill Pipe Above KB:	27.00 ft			String Weight: Initial	46000.00 lb
Depth to Top Packer:	3497.00 ft			Final	lb
Depth to Bottom Packer:	ft				
Interval between Packers:	28.00 ft				
Tool Length:	56.00 ft				
Number of Packers:	2	Diameter: 6.75 inches			

Tool Comments:

Tool Description

Tool Description	Length (ft)	Serial No.	Position	Depth (ft)	Accum. Lengths
Change Over Sub	1.00			3470.00	
Shut In Tool	5.00			3475.00	
Hydraulic tool	5.00			3480.00	
Jars	5.00			3485.00	
Safety Joint	2.00			3487.00	
Packer	5.00			3492.00	28.00 Bottom Of Top Packer
Packer	5.00			3497.00	
Stubb	1.00			3498.00	
Recorder	0.00	8369	Inside	3498.00	
Recorder	0.00	8700	Outside	3498.00	
Perforations	24.00			3522.00	
Bullnose	3.00			3525.00	28.00 Bottom Packers & Anchor

Total Tool Length: 56.00



**TRILOBITE
TESTING, INC**

DRILL STEM TEST REPORT

FLUID SUMMARY

Bach Oil Production

17-2s-19w Phillips,KS

P.O. Box 723
Alma, NE 68920

Donna Fae Well #1

Job Ticket: 55473

DST#: 2

ATTN: Bob Peterson ,Jason

Test Start: 2014.01.15 @ 12:47:33

Mud and Cushion Information

Mud Type: Gel Chem

Cushion Type:

Oil API:

deg API

Mud Weight: 9.00 lb/gal

Cushion Length:

ft

Water Salinity:

ppm

Viscosity: 57.00 sec/qt

Cushion Volume:

bbbl

Water Loss: 4.77 in³

Gas Cushion Type:

Resistivity: ohm.m

Gas Cushion Pressure:

psig

Salinity: 3000.00 ppm

Filter Cake: 1.00 inches

Recovery Information

Recovery Table

Length ft	Description	Volume bbl
5.00	VSOCM 2% Oil, 98% Mud	0.025
1.00	Free Oil 100% Oil	0.005

Total Length: 6.00 ft Total Volume: 0.030 bbl

Num Fluid Samples: 0

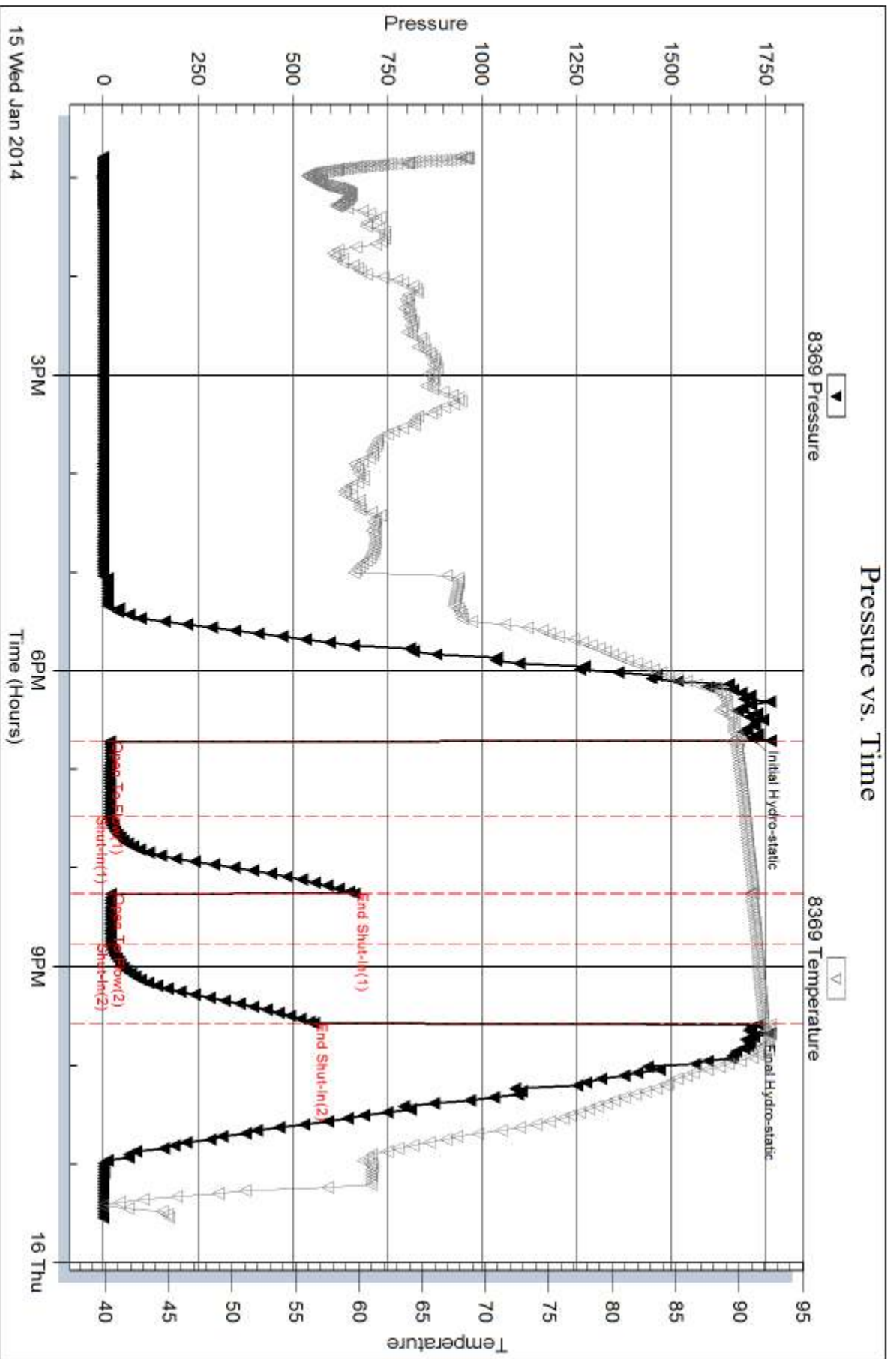
Num Gas Bombs: 0

Serial #:

Laboratory Name:

Laboratory Location:

Recovery Comments:

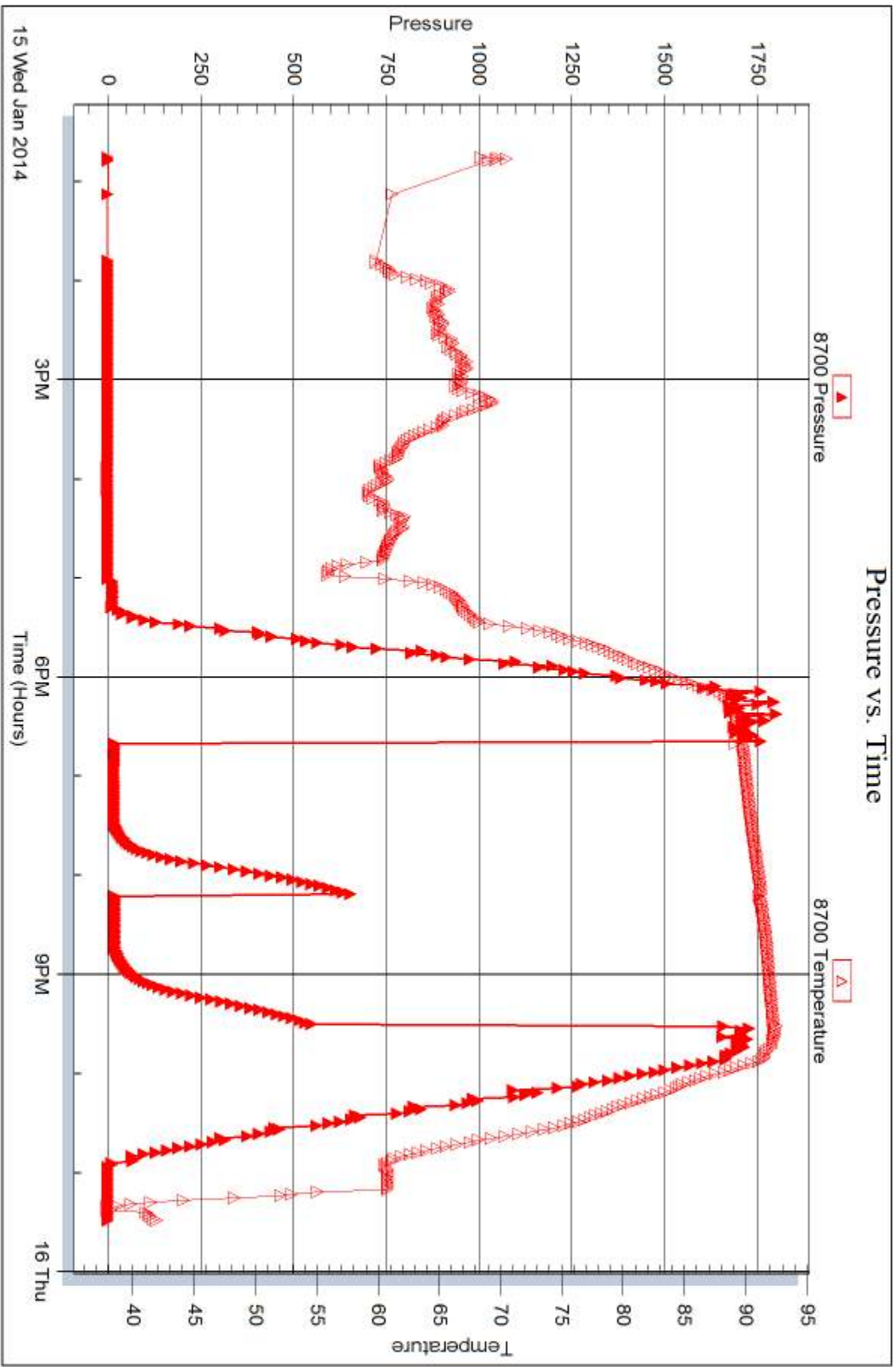


Serial #: 8700

Outside Bach Oil Production

Donna Fae Well #1

DST Test Number: 2



Triobite Testing, Inc

Ref. No: 55473

Printed: 2014.01.17 @ 15:04:51



DRILL STEM TEST REPORT

Prepared For: **Bach Oil Production**

P.O. Box 723
Alma, NE 68920

ATTN: Bob Peterson ,Jason

Donna Fae Well #1

17-2s-19w Phillips,KS

Start Date: 2014.01.16 @ 17:40:32

End Date: 2014.01.17 @ 00:17:11

Job Ticket #: 55474 DST #: 3

Trilobite Testing, Inc
PO Box 362 Hays, KS 67601
ph: 785-625-4778 fax: 785-625-5620

Printed: 2014.01.17 @ 15:04:17



**TRILOBITE
TESTING, INC**

DRILL STEM TEST REPORT

Bach Oil Production

17-2s-19w Phillips,KS

P.O. Box 723
Alma, NE 68920

Donna Fae Well #1

ATTN: Bob Peterson ,Jason

Job Ticket: 55474

DST#: 3

Test Start: 2014.01.16 @ 17:40:32

GENERAL INFORMATION:

Formation: **LKC "G"**

Deviated: No Whipstock: ft (KB)

Time Tool Opened: 19:27:27

Time Test Ended: 00:17:11

Test Type: Conventional Bottom Hole (Reset)

Tester: Ray Schwager

Unit No: 70

Interval: 3516.00 ft (KB) To 3652.00 ft (KB) (TVD)

Reference Elevations: 2202.00 ft (KB)

Total Depth: 3652.00 ft (KB) (TVD)

2197.00 ft (CF)

Hole Diameter: 7.85 inches Hole Condition: Poor

KB to GR/CF: 5.00 ft

Serial #: 8369

Inside

Press@RunDepth: 107.13 psig @ 3524.00 ft (KB)

Capacity: 8000.00 psig

Start Date: 2014.01.16

End Date:

2014.01.17

Last Calib.:

2014.01.17

Start Time: 17:40:32

End Time:

00:17:11

Time On Btm:

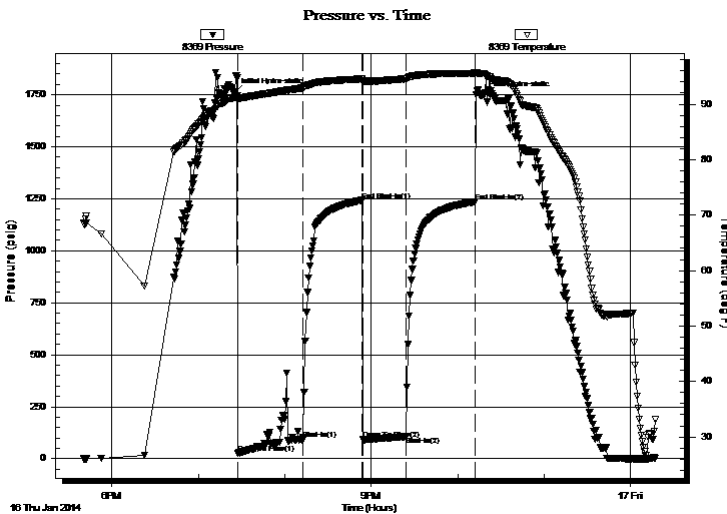
2014.01.16 @ 19:25:12

Time Off Btm:

2014.01.16 @ 22:16:56

TEST COMMENT: 45-IFP-w k to a fr bl 1" to 4 1/2" bl
45-ISIP-no bl
30-FFP-w k bl thru-out 1/4" to 1/2" bl
45-FSIP-no bl

PRESSURE SUMMARY



Time (Min.)	Pressure (psig)	Temp (deg F)	Annotation
0	1758.83	91.19	Initial Hydro-static
3	26.02	90.78	Open To Flow (1)
48	91.80	92.94	Shut-In(1)
89	1242.25	94.54	End Shut-In(1)
89	91.90	94.20	Open To Flow (2)
119	107.13	94.58	Shut-In(2)
167	1235.83	95.59	End Shut-In(2)
172	1747.78	95.49	Final Hydro-static

Recovery

Length (ft)	Description	Volume (bbl)
185.00	WM 40%W60%M w/show of oil	1.44

Gas Rates

Choke (inches)	Pressure (psig)	Gas Rate (Mcf/d)

* Recovery from multiple tests



DRILL STEM TEST REPORT

Bach Oil Production

17-2s-19w Phillips,KS

P.O. Box 723
Alma, NE 68920

Donna Fae Well #1

Job Ticket: 55474 DST#: 3

ATTN: Bob Peterson, Jason

Test Start: 2014.01.16 @ 17:40:32

GENERAL INFORMATION:

Formation: **LKC "G"**

Deviated: No Whipstock: ft (KB)

Time Tool Opened: 19:27:27

Time Test Ended: 00:17:11

Test Type: Conventional Bottom Hole (Reset)

Tester: Ray Schwager

Unit No: 70

Interval: 3516.00 ft (KB) To 3652.00 ft (KB) (TVD)

Reference Elevations: 2202.00 ft (KB)

Total Depth: 3652.00 ft (KB) (TVD)

2197.00 ft (CF)

Hole Diameter: 7.85 inches Hole Condition: Poor

KB to GR/CF: 5.00 ft

Serial #: 8700 Outside

Press@RunDepth: psig @ 3524.00 ft (KB)

Capacity: 8000.00 psig

Start Date: 2014.01.16

End Date: 2014.01.17

Last Calib.: 2014.01.17

Start Time: 17:40:48

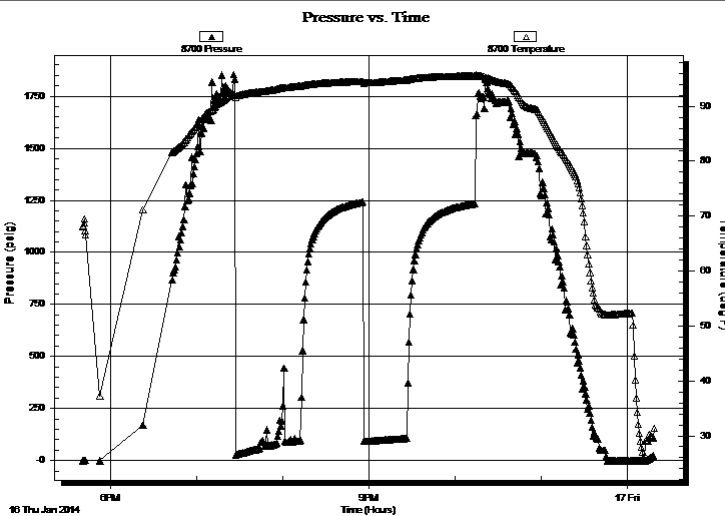
End Time: 00:19:12

Time On Btm:

Time Off Btm:

TEST COMMENT: 45-IFP-w k to a fr bl 1" to 4 1/2" bl
45-ISIP-no bl
30-FFP-w k bl thru-out 1/4" to 1/2" bl
45-FSIP-no bl

PRESSURE SUMMARY



Time (Min.)	Pressure (psig)	Temp (deg F)	Annotation

Recovery

Length (ft)	Description	Volume (bbl)
185.00	WM 40%W60%M w/show of oil	1.44

Gas Rates

Choke (inches)	Pressure (psig)	Gas Rate (Mcf/d)

* Recovery from multiple tests



**TRILOBITE
TESTING, INC**

DRILL STEM TEST REPORT

TOOL DIAGRAM

Bach Oil Production

17-2s-19w Phillips,KS

P.O. Box 723
Alma, NE 68920

Donna Fae Well #1

Job Ticket: 55474

DST#: 3

ATTN: Bob Peterson ,Jason

Test Start: 2014.01.16 @ 17:40:32

Tool Information

Drill Pipe:	Length: 3383.00 ft	Diameter: 3.80 inches	Volume: 47.45 bbl	Tool Weight:	2200.00 lb
Heavy Wt. Pipe:	Length: 0.00 ft	Diameter: 0.00 inches	Volume: 0.00 bbl	Weight set on Packer:	25000.00 lb
Drill Collar:	Length: 127.00 ft	Diameter: 2.25 inches	Volume: 0.62 bbl	Weight to Pull Loose:	60000.00 lb
			<u>Total Volume: 48.07 bbl</u>	Tool Chased	0.00 ft
Drill Pipe Above KB:	22.00 ft			String Weight: Initial	46000.00 lb
Depth to Top Packer:	3516.00 ft			Final	47000.00 lb
Depth to Bottom Packer:	ft				
Interval between Packers:	136.00 ft				
Tool Length:	164.00 ft				
Number of Packers:	2	Diameter: 6.75 inches			

Tool Comments:

Tool Description

Tool Description	Length (ft)	Serial No.	Position	Depth (ft)	Accum. Lengths
Change Over Sub	1.00			3489.00	
Shut In Tool	5.00			3494.00	
Hydraulic tool	5.00			3499.00	
Jars	5.00			3504.00	
Safety Joint	2.00			3506.00	
Packer	5.00			3511.00	28.00 Bottom Of Top Packer
Packer	5.00			3516.00	
Stubb	1.00			3517.00	
Perforations	7.00			3524.00	
Recorder	0.00	8369	Inside	3524.00	
Recorder	0.00	8700	Outside	3524.00	
Blank Spacing	125.00			3649.00	
Blank Spacing	3.00			3652.00	136.00 Bottom Packers & Anchor

Total Tool Length: 164.00



**TRILOBITE
TESTING, INC**

DRILL STEM TEST REPORT

FLUID SUMMARY

Bach Oil Production

17-2s-19w Phillips,KS

P.O. Box 723
Alma, NE 68920

Donna Fae Well #1

Job Ticket: 55474

DST#: 3

ATTN: Bob Peterson ,Jason

Test Start: 2014.01.16 @ 17:40:32

Mud and Cushion Information

Mud Type: Gel Chem

Cushion Type:

Oil API:

deg API

Mud Weight: 9.00 lb/gal

Cushion Length:

ft

Water Salinity:

102000 ppm

Viscosity: 59.00 sec/qt

Cushion Volume:

bbbl

Water Loss: 4.78 in³

Gas Cushion Type:

Resistivity: ohm.m

Gas Cushion Pressure:

psig

Salinity: 500.00 ppm

Filter Cake: 1.00 inches

Recovery Information

Recovery Table

Length ft	Description	Volume bbl
185.00	WM 40%W60%M w /show of oil	1.438

Total Length: 185.00 ft Total Volume: 1.438 bbl

Num Fluid Samples: 0

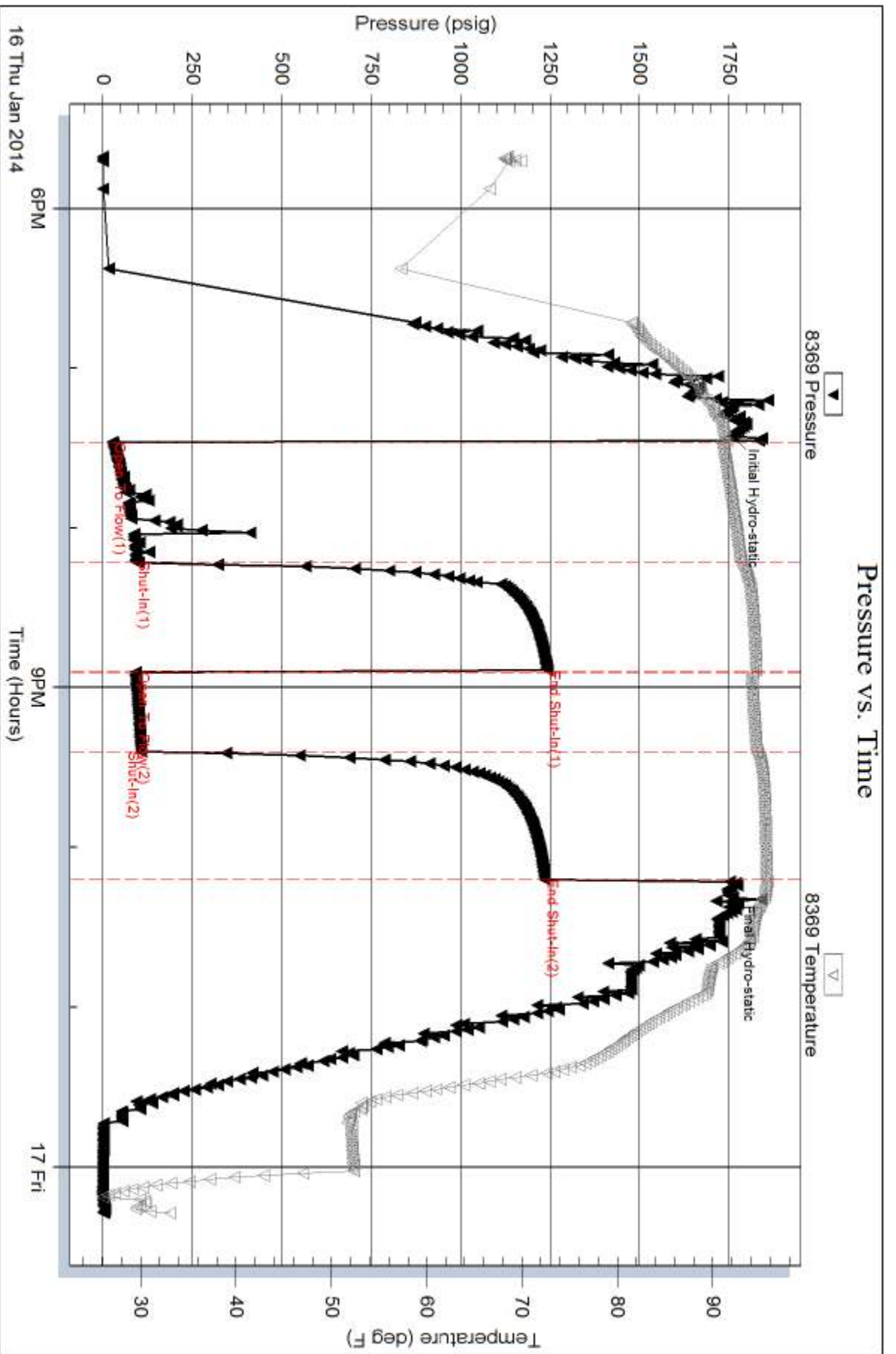
Num Gas Bombs: 0

Serial #:

Laboratory Name:

Laboratory Location:

Recovery Comments: RW .08 @ 65F



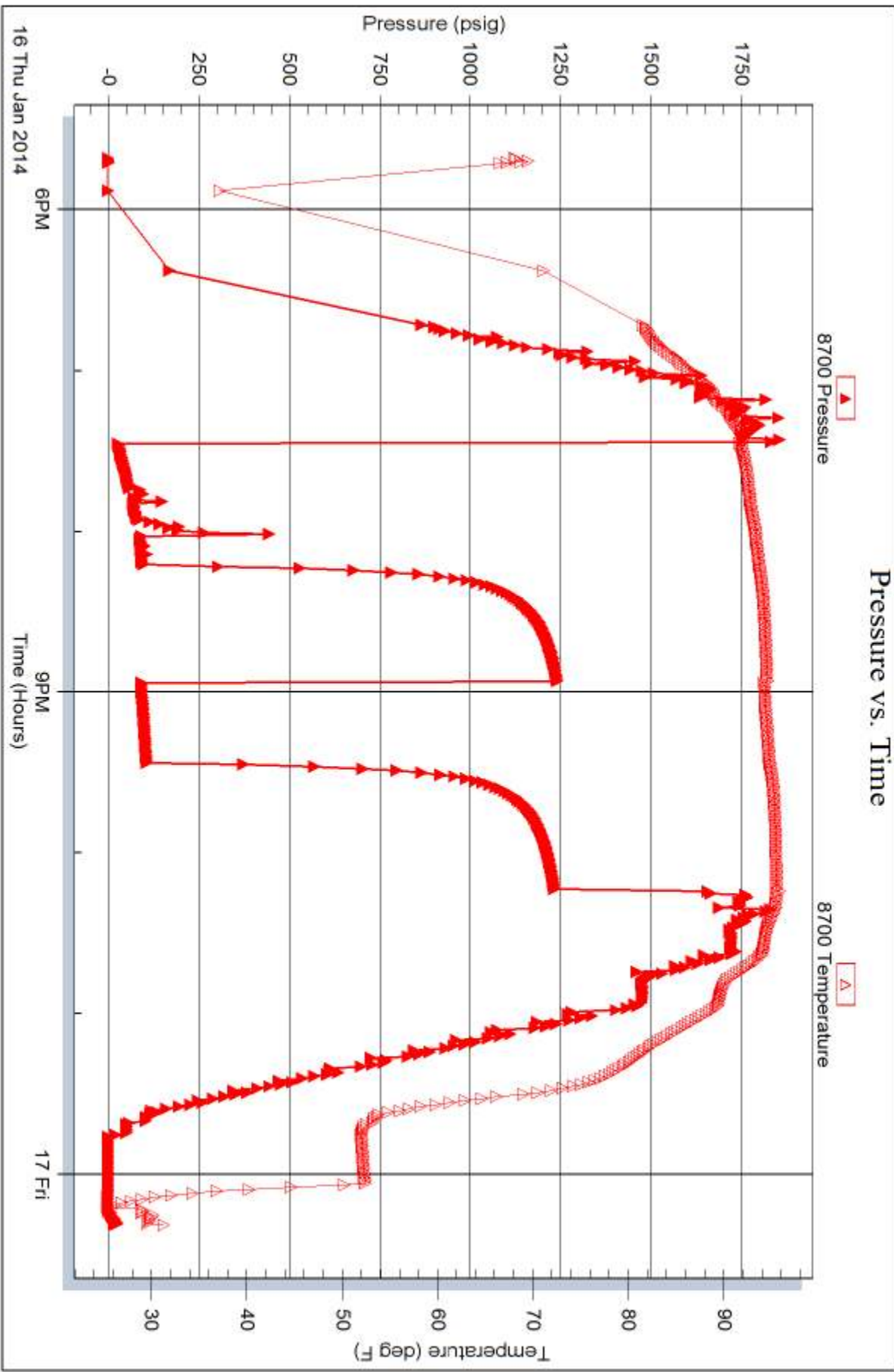
Serial #: 8700

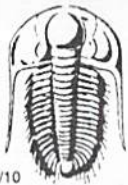
Outside

Bach Oil Production

Donna Fae Well #1

DST Test Number: 3





TRILOBITE TESTING INC.

1515 Commerce Parkway • Hays, Kansas 67601

Test Ticket

NO. 55472

Well Name & No. DONNA FAE Well #1 Test No. 1 Date 01/15/2014
 Company Bach Oil Production Elevation 2202 KB 2197 GL
 Address P.O. Box 723 ALMA, NE. 68920
 Co. Rep / Geo. Bob Peterson Rig Murfin #24
 Location: Sec. 17 Twp. 25 Rge. 19W Co. Phillips State KS

Interval Tested 3430 - 3500 Zone Tested LKC A,C, & D
 Anchor Length 70' Drill Pipe Run 3288 Mud Wt. 8.7
 Top Packer Depth 3426 Drill Collars Run 127 Vis 57
 Bottom Packer Depth 3430 Wt. Pipe Run 0 WL 4.8
 Total Depth 3500 Chlorides _____ ppm System LCM N/A

Blow Description IFP - Medium Blow built to 4.5m
ISI - Dead no blow back
FF - Medium blow built to 3.5m
FSI - Dead no blow back

Rec	Feet of	%gas	%oil	%water	%mud
<u>170</u>	<u>Mud</u>			<u>100</u>	
_____	_____				
_____	_____				
_____	_____				
_____	_____				

Rec Total 170 BHT 92.4 Gravity _____ API RW _____ @ _____ °F Chlorides _____ ppm

(A) Initial Hydrostatic 1746 Test 1150 T-On Location 2348
 (B) First Initial Flow 18 Jars 250 T-Started 0045
 (C) First Final Flow 68 Safety Joint 75 T-Open 0250
 (D) Initial Shut-In 1174 Circ Sub _____ T-Pulled 0520
 (E) Second Initial Flow 71 Hourly Standby _____ T-Out _____
 (F) Second Final Flow 88 Mileage 166 R/T 120rt 186 Comments _____
 (G) Final Shut-In 1156 Sampler _____
 (H) Final Hydrostatic 1675 Straddle _____ Ruined Shale Packer _____
 Shale Packer _____ Ruined Packer _____
 Extra Packer _____ Extra Copies _____
 Extra Recorder _____ Sub Total 0
 Day Standby _____ Total 1661
 Accessibility _____ MP/DST Disc't _____
 Sub Total 1661

Approved By _____ Our Representative in Phillips

Trilobite Testing Inc. shall not be liable for damaged of any kind of the property or personnel of the one for whom a test is made, or for any loss suffered or sustained, directly or indirectly, through the use of its equipment, or its statements or opinion concerning the results of any test, tools lost or damaged in the hole shall be paid for at cost by the party for whom the test is made.



TRILOBITE TESTING INC.

1515 Commerce Parkway • Hays, Kansas 67601

Test Ticket

NO. **55473**

Well Name & No. DONNA Fae Well #1 Test No. 2 Date 01/15/2014
 Company Bach Oil Production Elevation 2202 KB 2197 GL
 Address P.O. Box 723 Alma, NE 68920
 Co. Rep / Geo. Bob Peterson Rig Murfin #24
 Location: Sec. 17 Twp. 25 Rge. 19W Co. Phillips State K5

Interval Tested 3497 - 3525 Zone Tested LKC F ZONE
 Anchor Length 28' Drill Pipe Run 3369 Mud Wt. 8.7
 Top Packer Depth 3495 Drill Collars Run 127 Vis 57
 Bottom Packer Depth 3497 Wt. Pipe Run 0 WL 4.8
 Total Depth 3525 Chlorides 300 ppm System LCM N/A

Blow Description IFP-45- Weak blow built to 3/8 IN
ISI-45- Dead no blow back
FF-30- No blow
FSL-45- Dead no blow back

Rec	Feet of	%gas	%oil	%water	%mud
<u>5</u>	<u>VSOCM</u>	<u>2</u>		<u>98</u>	
<u>1</u>	<u>Free Oil</u>	<u>100</u>			

Rec Total 6 BHT 92.3 Gravity _____ API RW _____ @ _____ °F Chlorides _____ ppm

(A) Initial Hydrostatic 1783 Test 1150 T-On Location 1210
 (B) First Initial Flow 16 Jars 250 T-Started 1247
 (C) First Final Flow 20 Safety Joint 75 T-Open 1845
 (D) Initial Shut-In 665 Circ Sub _____ T-Pulled 2130
 (E) Second Initial Flow 18 Hourly Standby _____ T-Out 2333
 (F) Second Final Flow 20 Mileage 166 R/T 186
 (G) Final Shut-In 554 Sampler _____
 (H) Final Hydrostatic 1793 Straddle _____

Initial Open 45 Shale Packer _____ Ruined Shale Packer _____
 Initial Shut-In 45 Shale Packer _____ Ruined Packer _____
 Final Flow 30 Extra Packer _____ Extra Copies _____
 Final Shut-In 45 Extra Recorder _____ Sub Total 0
 Day Standby _____ Total 1661
 Accessibility _____ MP/DST Disc't _____
 Sub Total 1661

Approved By _____ Our Representative Jim Phillips

Trilobite Testing Inc. shall not be liable for damaged of any kind of the property or personnel of the one for whom a test is made, or for any loss suffered or sustained, directly or indirectly, through the use of its equipment, or its statements or opinion concerning the results of any test, tools lost or damaged in the hole shall be paid for at cost by the party for whom the test is made.



TRILOBITE TESTING INC.

1515 Commerce Parkway • Hays, Kansas 67601

Test Ticket

NO. 55474

Well Name & No. Donna FAE #1 Test No. 3 Date 1-16-14
 Company Bach Oil Production Elevation 2202 KB 2197 GL
 Address PO Box 723 ALMA, NE. 68920-0723
 Co. Rep / Geo. Bob Petersen Rig Murfinrig 24
 Location: Sec. 17 Twp. 2^s Rge. 19^w Co. Phillips State Ks

Interval Tested 3516-3652 Zone Tested LKC "G"
 Anchor Length 136 Drill Pipe Run 3383 Mud Wt. 9.4
 Top Packer Depth 3511 Drill Collars Run 127 Vis 59
 Bottom Packer Depth 3516 Wt. Pipe Run - WL 4.8
 Total Depth 3652 Chlorides 500 ppm System LCM -

Blow Description TFP - WEAK TO A FAIR BLOW 1" TO 4 1/2" BLOW
TSIP - NO BLOW
FFP - WEAK BLOW THRU - OUT 1/4" TO 1/2" BLOW
FSIP - NO BLOW

Rec	Feet of	%gas	%oil	%water	%mud
<u>185</u>	<u>WM</u>			<u>40</u>	<u>60</u>
	<u>w/show of oil</u>				

Rec Total 185 BHT 95 Gravity - API RW .08 @ 65 °F Chlorides 102000 ppm

(A) Initial Hydrostatic 1758 Test 1150 T-On Location 1600
 (B) First Initial Flow 26 Jars 250 T-Started 1740
 (C) First Final Flow 91 Safety Joint 75 T-Open 1925
 (D) Initial Shut-In 1242 Circ Sub T-Pulled 2210
 (E) Second Initial Flow 91 Hourly Standby T-Out 0017
 (F) Second Final Flow 107 Mileage 166RT 186 Comments _____
 (G) Final Shut-In 1235 Sampler _____
 (H) Final Hydrostatic 1747 Straddle _____
 Shale Packer _____
 Ruined Shale Packer _____
 Ruined Packer _____
 Extra Packer _____
 Extra Copies _____

Initial Open 45 Extra Recorder _____ Sub Total 0
 Initial Shut-In 45 Day Standby _____ Total 1661
 Final Flow 30 Accessibility _____ MP/DST Disc't _____
 Final Shut-In 45 Sub Total 1661

Approved By _____ Our Representative Ray Schwager Thank you

Trilobite Testing Inc. shall not be liable for damaged of any kind of the property or personnel of the one for whom a test is made, or for any loss suffered or sustained, directly or indirectly, through the use of its equipment, or its statements or opinion concerning the results of any test, tools lost or damaged in the hole shall be paid for at cost by the party for whom the test is made.