

# GEOLOGIST'S REPORT

## DRILLING TIME AND SAMPLE LOG

### BACH OIL PRODUCTION

WELL: DELIMONT #3

LOC.: 500' FNL & 1100' FEL  
SEC. 8-2-19W  
PHILLIPS COUNTY, KANSAS  
API: 15-147-20730-00-00

### ELEVATION

KB: 2264  
GL: 2259  
LOG MEASURED  
FROM: KB

### SURFACE CASING

8 5/8" Casing set @ 222'  
w/175 SX

### PRODUCTION CASING

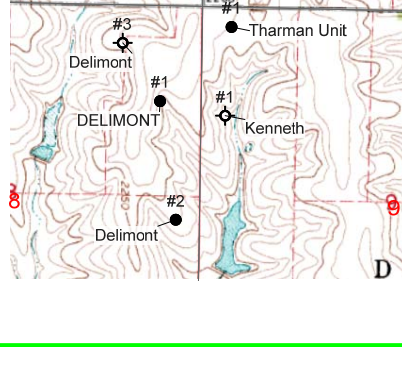
**D&A**

WELL LOG SURVEYS

NONE

### SAMPLE LOG TOPS

FORMATION	DEPTH	DATUM	POSITION
Stone Corral	1878	+386	-11
Base Stone Corral	1899	+365	-14
Topeka	3243	-979	-15
Heebner	3451	-1187	-15
Toronto	3478	-1214	-13
Lansing	3495	-1231	-14
Muncie	3608	-1344	-18
Stark	3673	-1409	-19



### REFERENCE WELL:

Bach  
Delimont #1  
W/2 E/2 E/2 NE  
8-2S-19W

### REMARKS AND RECOMMENDATIONS

This well was plugged and abandoned.

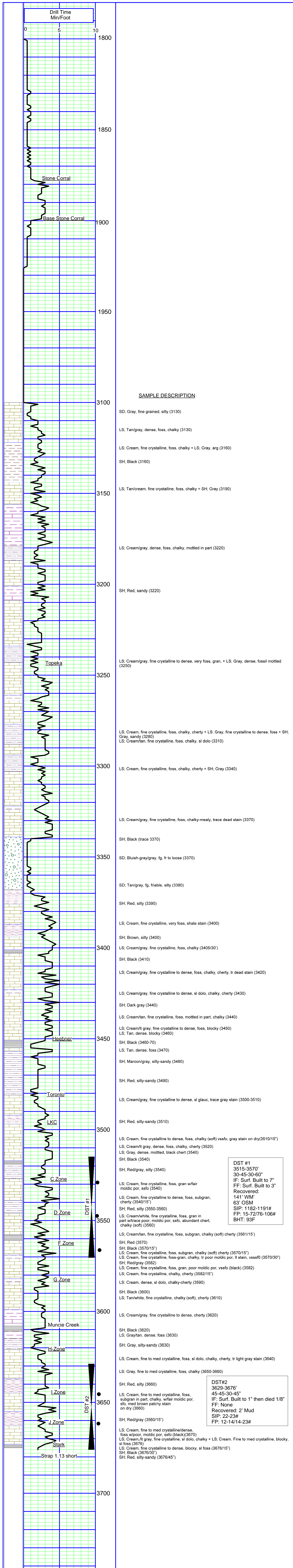
Respectfully submitted,

*Robert J. Petersen*  
Robert J. Petersen

### DAILY REPORT

@ 7:00 A.M.

1-3-14 MIRU  
1-4-14 415'  
1-5-14 2090'  
1-6-14 2865'  
1-7-14 3405'  
1-8-14 3570'



DST #1  
3515-3570'  
30-45-30-60"  
IF: Surf. Built to 7"  
FF: Surf. Built to 3"  
Recovered:  
141' WM'  
63' OSM  
SIP: 1182-1191#  
FP: 15-72/76-106#  
BHT: 93F

DST #2  
3629-3676'  
45-45-30-45"  
IF: Surf. Built to 1" then died 1/8"  
FF: None  
Recovered: 2' Mud  
SIP: 22-23#  
FP: 12-14/14-23#