



**TRILOBITE TESTING, INC.**

# DRILL STEM TEST REPORT

Russell Oil Inc  
 p.o. box 8050  
 Edmond, Ok  
 73083  
 ATTN: Kitt Noah

**32-15s-34w Scott, Ks**  
**EdwardsTrust B #2-32**  
 Job Ticket: 56283 **DST#: 4**  
 Test Start: 2014.02.19 @ 21:50:53

## GENERAL INFORMATION:

Formation: **Johnson**  
 Deviated: No Whipstock: 0.00 ft (KB)  
 Time Tool Opened: 23:59:53  
 Time Test Ended: 09:50:23  
 Interval: **4564.00 ft (KB) To 4590.00 ft (KB) (TVD)**  
 Total Depth: 4590.00 ft (KB) (TVD)  
 Hole Diameter: 7.88 inches Hole Condition: Fair  
 Test Type: Conventional Bottom Hole (Reset)  
 Tester: Shane McBride  
 Unit No: 55  
 Reference Elevations: 3056.00 ft (KB)  
 3045.00 ft (CF)  
 KB to GR/CF: 11.00 ft

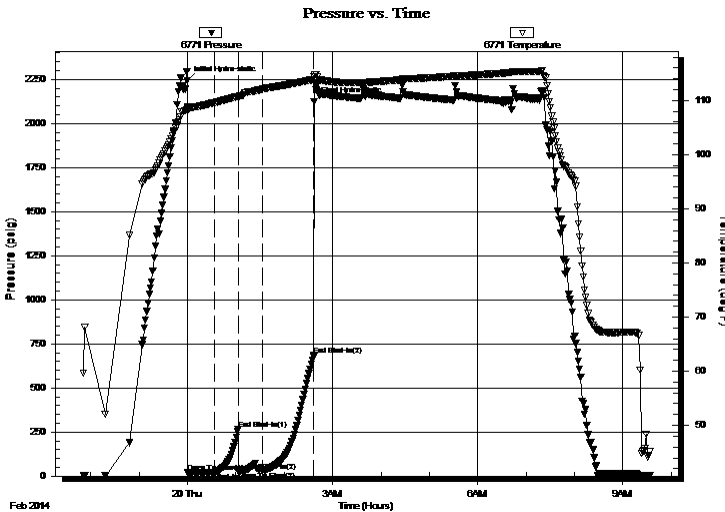
## Serial #: 6771

Inside

Press @ Run Depth: 27.58 psig @ 4565.00 ft (KB) Capacity: 8000.00 psig  
 Start Date: 2014.02.19 End Date: 2014.02.20 Last Calib.: 2014.02.20  
 Start Time: 21:50:53 End Time: 09:34:23 Time On Btm: 2014.02.19 @ 23:59:38  
 Time Off Btm: 2014.02.20 @ 02:36:53

TEST COMMENT: Weak blow died in 3 min  
 No return  
 No blow, Flush tool, Good surge, No blow  
 No return

## PRESSURE SUMMARY



Time (Min.)	Pressure (psig)	Temp (deg F)	Annotation
0	2244.01	108.83	Initial Hydro-static
1	19.32	108.04	Open To Flow (1)
34	21.61	109.59	Shut-In(1)
63	267.47	110.79	End Shut-In(1)
63	27.03	110.70	Open To Flow (2)
94	27.58	112.06	Shut-In(2)
157	686.43	113.87	End Shut-In(2)
158	2125.00	114.41	Final Hydro-static

## Recovery

Length (ft)	Description	Volume (bbl)
2.00	Heavy mud w/oil spots	0.01

\* Recovery from multiple tests

## Gas Rates

Choke (inches)	Pressure (psig)	Gas Rate (Mcf/d)



**TRILOBITE  
TESTING, INC.**

**DRILL STEM TEST REPORT**

**FLUID SUMMARY**

Russell Oil Inc

**32-15s-34w Scott, Ks**

p.o. box 8050  
Edmond, Ok  
73083

**EdwardsTrust B #2-32**

Job Ticket: 56283

**DST#: 4**

ATTN: Kitt Noah

Test Start: 2014.02.19 @ 21:50:53

**Mud and Cushion Information**

Mud Type: Gel Chem

Cushion Type:

Oil API:

0 deg API

Mud Weight: 9.00 lb/gal

Cushion Length:

ft

Water Salinity:

0 ppm

Viscosity: 55.00 sec/qt

Cushion Volume:

bbbl

Water Loss: 8.79 in<sup>3</sup>

Gas Cushion Type:

Resistivity: 0.00 ohm.m

Gas Cushion Pressure:

psig

Salinity: 6400.00 ppm

Filter Cake: 1.00 inches

**Recovery Information**

Recovery Table

Length ft	Description	Volume bbl
2.00	Heavy mud w /oil spots	0.010

Total Length: 2.00 ft      Total Volume: 0.010 bbl

Num Fluid Samples: 0

Num Gas Bombs: 0

Serial #:

Laboratory Name:

Laboratory Location:

Recovery Comments:

### Pressure vs. Time

