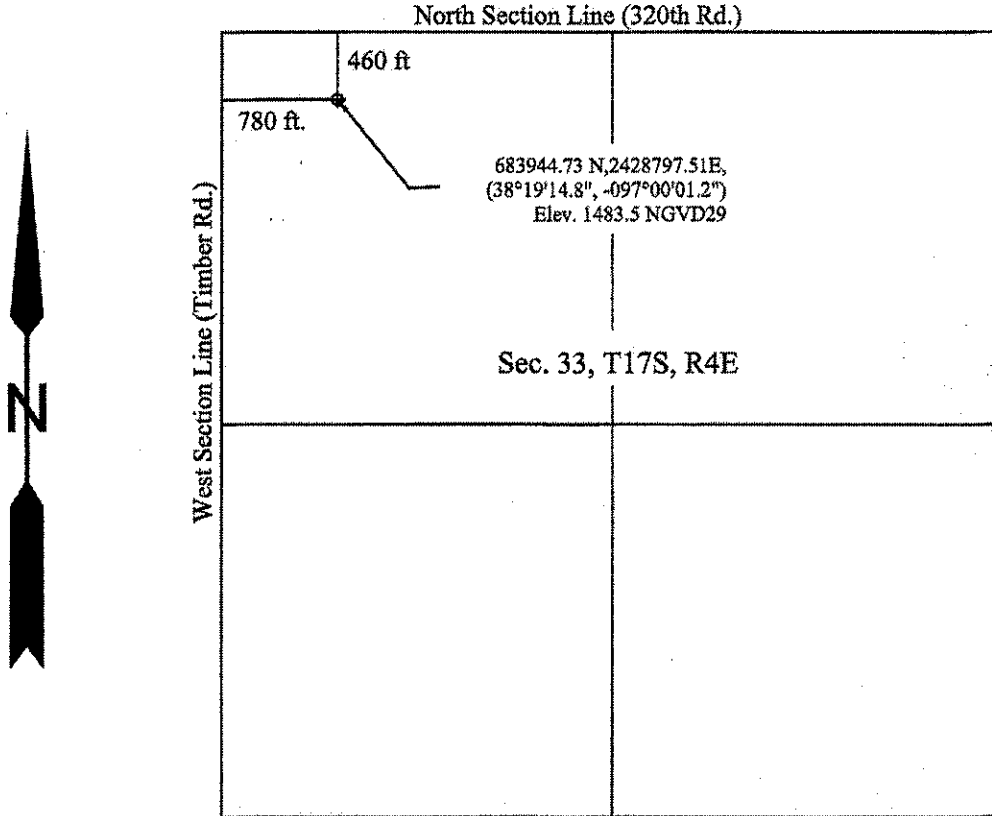
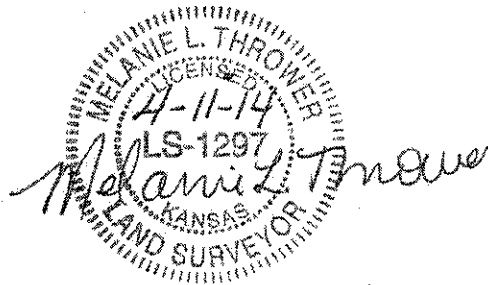


Marion County, Kansas



Horizontal and Vertical Monument: LOST SPRINGS USGS Z51 PID JF0400; 696,788.1601 N, 2439559.2490 E SPC NAD27, Elevation 1473.29 NGVD 29

On April 11, 2014, Melanie Thrower, licensed land surveyor in the State of Kansas, staked the location shown using topcon GR3 GPS.



Client: Arbuckle Energy Inc.  
Suite 305, 300 W. Douglas  
Wichita, KS 67202

McPherson Engineering &  
Land Surveying Services  
845 1800 Ave.  
Abilene, KS 67410  
(785)479-2354