

ADVANTAGE ELEVATIONS

OIL FIELD SURVEYORS

BOX 8604 - PRATT, KS 67124
(620) 672-6491

47142

INVOICE NO.

VAL ENERGY INC

OPERATOR

2-25

NO.

STANDIFORD

FARM

Cowley

COUNTY

25

S

32s

T

5e

R

3630' FSL & 2310' FEL of Sec.

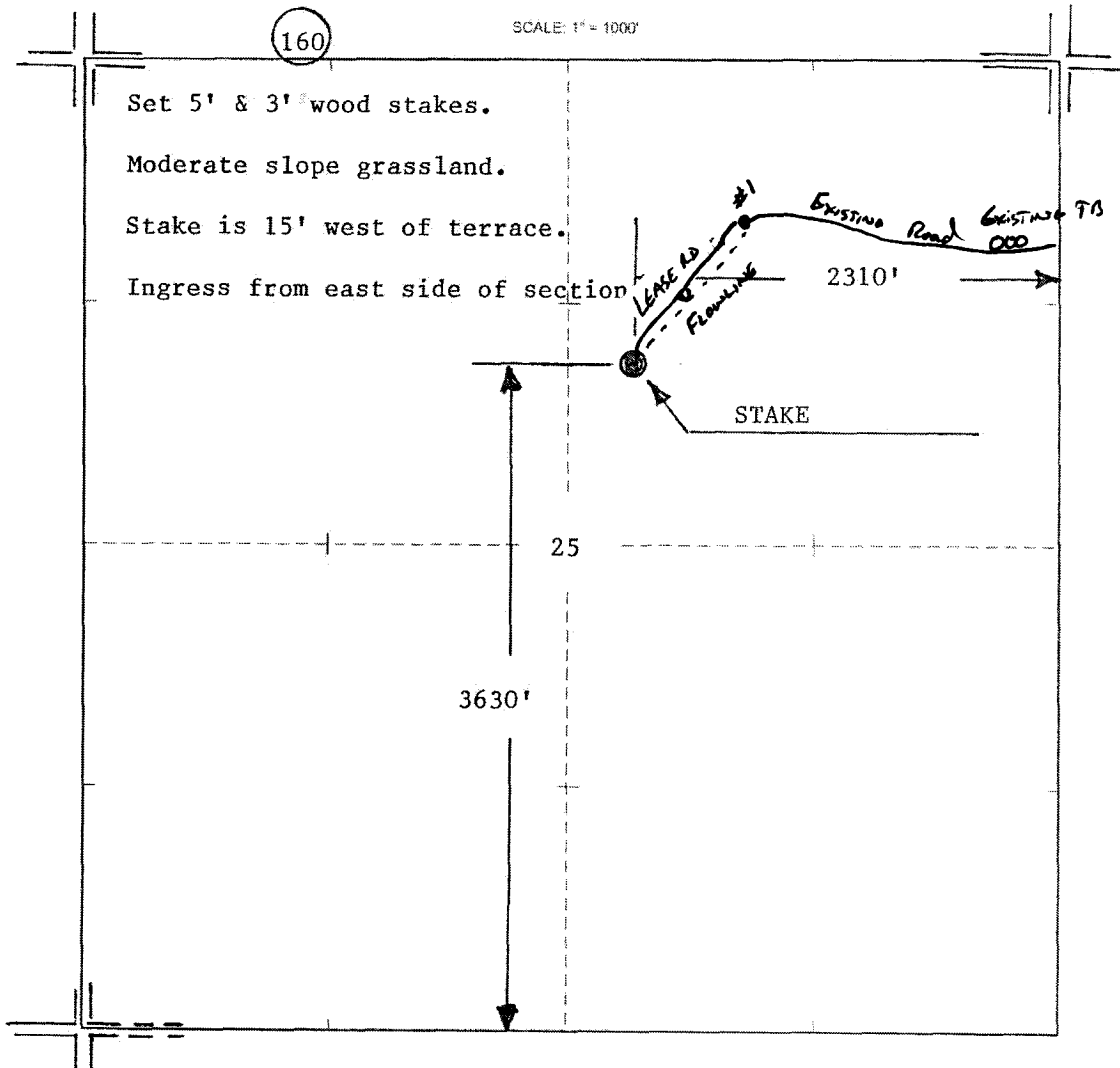
LOCATION

ELEVATION: 1242' GR

VAL ENERGY INC
200 W. Douglas, Ste 520
Wichita, KS 67202-3005



AUTHORIZED BY: Todd Allam



DATE STAKED: 4/7/14