

**TOTO ENERGY, LLC
LESTER LEASE
SW. 1/4, SECTION 36, T32S, R5E
COWLEY COUNTY, KANSAS**

GRAVEL ROAD NO (172ND) ROAD

Notes:

1. Set iron rod at location site.
2. All flagging Red & Yellow.
3. Overhead power available at the NW. corner of Sec. 36 and to the farmstead in the NE. 1/4 of Sec. 36.
4. Kansas One Call System Inc. should be notified before excavation (1-800-344-7233).
5. CAUTION; Various pipelines in Sec. 36.
6. Contact landowner for best access.
7. Set (2) alternate locations per instructions.

* Drillsite Location
Lester #3
330'FSL 330'FWL

36 — Ground Elevation = 1220

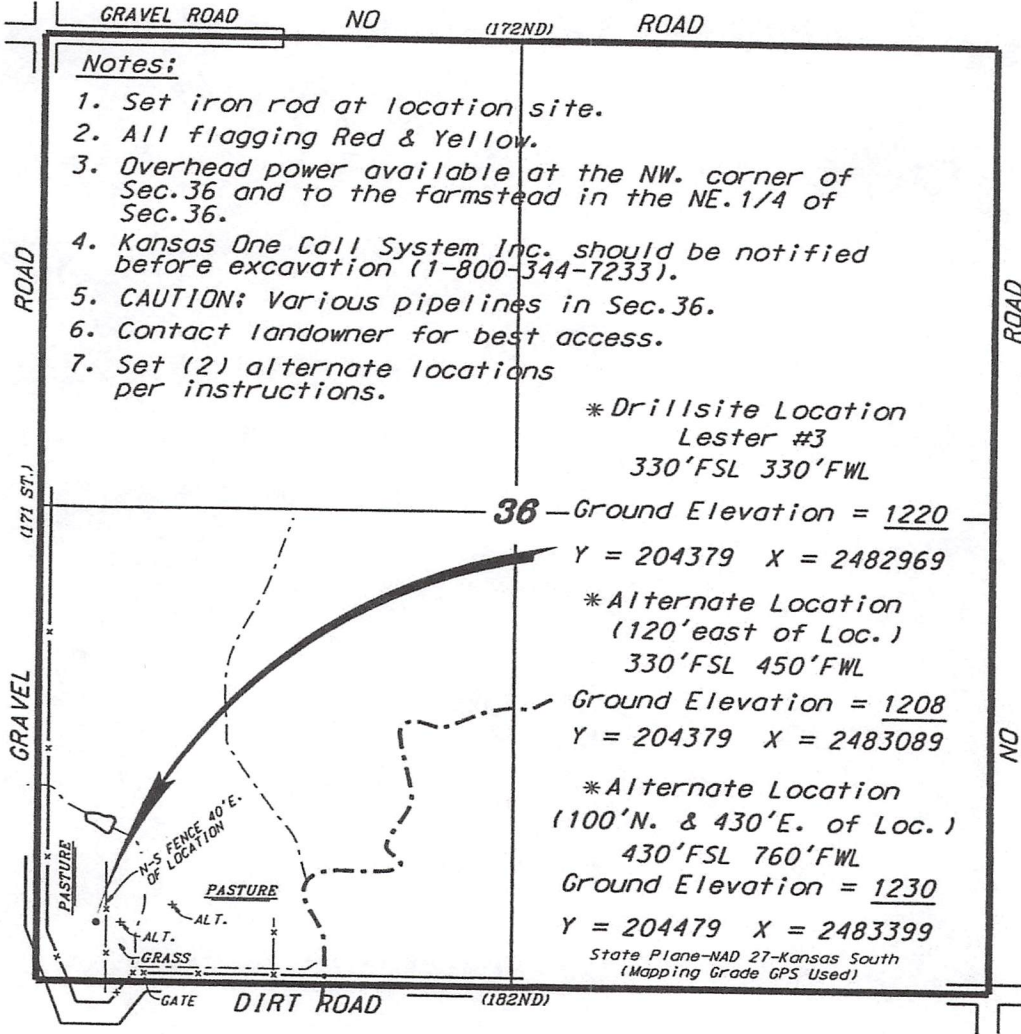
Y = 204379 X = 2482969

* Alternate Location
(120' east of Loc.)
330'FSL 450'FWL

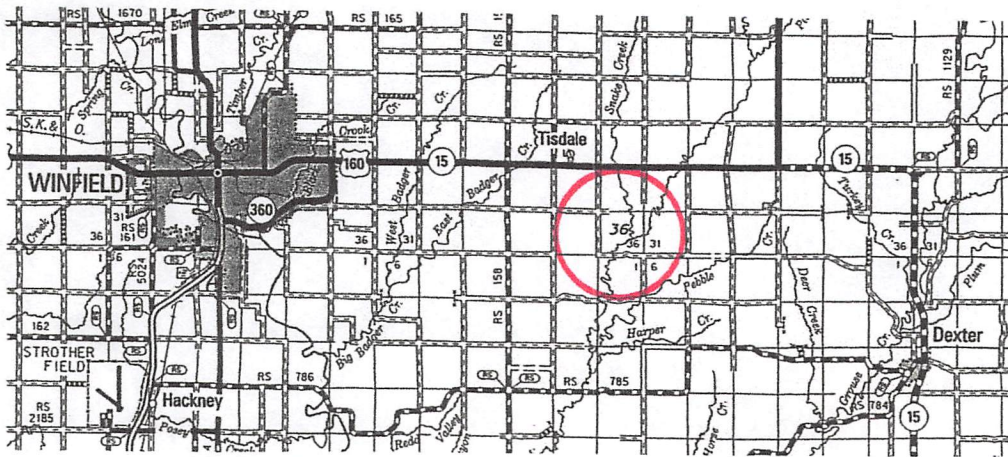
Ground Elevation = 1208
Y = 204379 X = 2483089

* Alternate Location
(100' N. & 430' E. of Loc.)
430'FSL 760'FWL
Ground Elevation = 1230
Y = 204479 X = 2483399

State Plane-NAD 27-Kansas South
(Mapping Grade GPS Used)



* Ingress and egress to location as shown on this plat is per usage only and may not be legally opened for public use. Contact landowner, tenant and county road department for access.



* Controlling data is based upon the best maps and photographs available to us and upon a regular section of land containing 640 acres.
 * Approximate section lines were determined using the normal standards of care of oilfield surveyors practicing in the state of Kansas. The section corners, which establish the precise section lines, were not necessarily located, and the exact location of the drillsite location in the section is not guaranteed. Therefore, the operator securing this service and accepting this plat and all other parties relying thereon agree to hold Central Kansas Oilfield Services, Inc., its officers and employees harmless from all losses, costs and expenses and said entities released from any liability from incidental or consequential damages.
 * Elevations derived from National Geodetic Vertical Datum.

Date April 10, 2014