



**TRILOBITE TESTING, INC**

# DRILL STEM TEST REPORT

Berexco LLC.

**23 1s 36w Rawlins Ks.**

2020 N. Bramblewood  
Wichita Ks.  
67206  
ATTN: Pete Vollmer

**Michael #1-23**

Job Ticket: 56786

**DST#: 1**

Test Start: 2014.02.14 @ 00:20:00

## GENERAL INFORMATION:

Formation: **Oread**

Deviated: No Whipstock: ft (KB)

Time Tool Opened: 02:46:30

Time Test Ended: 09:06:30

Test Type: Conventional Bottom Hole (Initial)

Tester: Chuck Kreuzer Jr.

Unit No: 61

**Interval: 4072.00 ft (KB) To 4120.00 ft (KB) (TVD)**

Reference Elevations: 3284.00 ft (KB)

Total Depth: 4120.00 ft (KB) (TVD)

3271.00 ft (CF)

Hole Diameter: 7.88 inches Hole Condition: Good

KB to GR/CF: 13.00 ft

**Serial #: 8673**

**Inside**

Press@RunDepth: 145.30 psig @ 4073.00 ft (KB)

Capacity: 8000.00 psig

Start Date: 2014.02.14

End Date:

2014.02.14

Last Calib.:

2014.02.14

Start Time: 00:20:01

End Time:

09:06:30

Time On Btm:

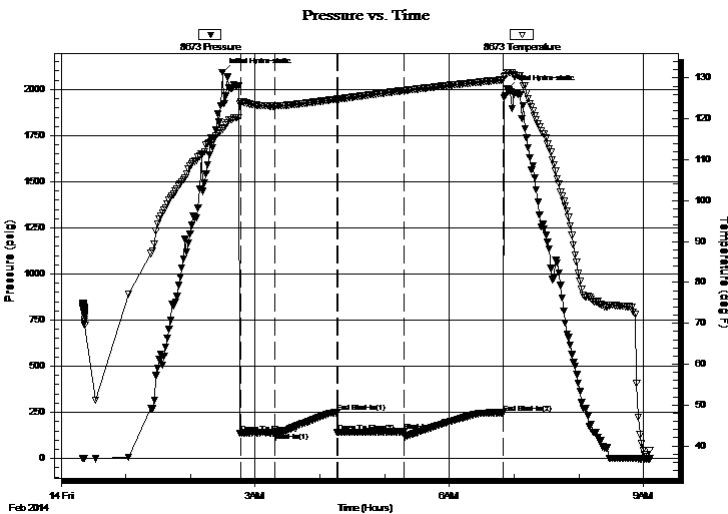
2014.02.14 @ 02:29:30

Time Off Btm:

2014.02.14 @ 06:53:30

**TEST COMMENT:** IF: Weak surface blow died in 15 mins.  
IS: No blow back over 60 mins.  
FF: No blow over 60 mins.  
FS: No blow back over 90 mins.

## PRESSURE SUMMARY



Time (Min.)	Pressure (psig)	Temp (deg F)	Annotation
0	2092.68	117.49	Initial Hydro-static
17	138.04	124.07	Open To Flow (1)
49	140.86	123.15	Shut-In(1)
106	248.53	124.82	End Shut-In(1)
107	141.86	124.81	Open To Flow (2)
168	145.30	126.89	Shut-In(2)
260	248.03	129.56	End Shut-In(2)
264	2001.44	131.19	Final Hydro-static

## Recovery

Length (ft)	Description	Volume (bbl)
200.00	mud-100%m	0.98

## Gas Rates

	Choke (inches)	Pressure (psig)	Gas Rate (Mcf/d)



**TRILOBITE  
TESTING, INC**

# DRILL STEM TEST REPORT

## FLUID SUMMARY

Berexco LLC.

**23 1s 36w Rawlins Ks.**

2020 N. Bramblewood  
Wichita Ks.  
67206  
ATTN: Pete Vollmer

**Michael #1-23**

Job Ticket: 56786

**DST#: 1**

Test Start: 2014.02.14 @ 00:20:00

### Mud and Cushion Information

Mud Type: Gel Chem

Mud Weight: 9.00 lb/gal

Viscosity: 55.00 sec/qt

Water Loss: 6.00 in<sup>3</sup>

Resistivity: ohm.m

Salinity: 400.00 ppm

Filter Cake: 2.00 inches

Cushion Type:

Cushion Length: ft

Cushion Volume: bbl

Gas Cushion Type:

Gas Cushion Pressure: psig

Oil API:

Water Salinity: deg API

ppm

### Recovery Information

Recovery Table

Length ft	Description	Volume bbl
200.00	mud-100%m	0.984

Total Length: 200.00 ft      Total Volume: 0.984 bbl

Num Fluid Samples: 0

Num Gas Bombs: 0

Serial #:

Laboratory Name:

Laboratory Location:

Recovery Comments: Had 12ft. of fill Put weight on tool. Tool slid, tool opened on slide. Bled off blow. Tool set about 8 ft higher than i had figured.

