



**TRILOBITE
TESTING, INC**

DRILL STEM TEST REPORT

Berexco LLC.

23 1s 36w Rawlins Ks.

2020 N. Bramblewood
Wichita Ks.
67206
ATTN: Pete Vollmer

Michael #1-23

Job Ticket: 56791

DST#: 6

Test Start: 2014.02.18 @ 15:00:00

GENERAL INFORMATION:

Formation: **LKC-D,E**

Deviated: No Whipstock: ft (KB)

Time Tool Opened: 17:25:30

Time Test Ended: 01:06:00

Test Type: Conventional Bottom Hole (Reset)

Tester: Chuck Kreuzer Jr.

Unit No: 61

Interval: 4382.00 ft (KB) To 4434.00 ft (KB) (TVD)

Reference Elevations: 3284.00 ft (KB)

Total Depth: 4434.00 ft (KB) (TVD)

3271.00 ft (CF)

Hole Diameter: 7.88 inches Hole Condition: Good

KB to GR/CF: 13.00 ft

Serial #: 8673

Inside

Press@RunDepth: 123.98 psig @ 4383.00 ft (KB)

Capacity: 8000.00 psig

Start Date: 2014.02.18

End Date:

2014.02.19

Last Calib.:

2014.02.19

Start Time: 15:00:01

End Time:

01:06:00

Time On Btm:

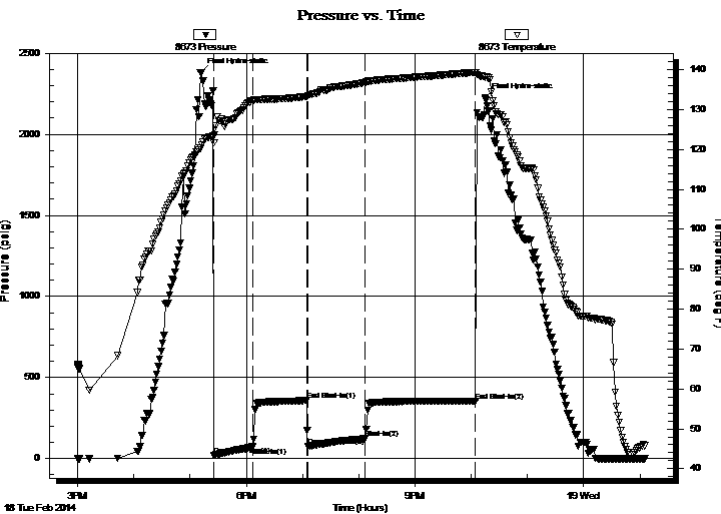
Time Off Btm: 2014.02.18 @ 17:11:00

TEST COMMENT: IF: Weak surface blow over 30 mins.

IS: No blow back

FF: No blow

FS: No blow back



PRESSURE SUMMARY

Time (Min.)	Pressure (psig)	Temp (deg F)	Annotation
0	2382.04	120.30	Final Hydro-static
15	20.12	121.71	Open To Flow (1)
56	72.68	132.22	Shut-In(1)
114	359.53	133.27	End Shut-In(1)
115	78.05	133.56	Open To Flow (2)
176	123.98	136.79	Shut-In(2)
294	356.02	139.29	End Shut-In(2)
304	2223.73	138.14	Final Hydro-static

Recovery

Length (ft)	Description	Volume (bbl)
92.00	mud-100%m	0.45
92.00	vsocm-5%o95%m	0.45
40.00	socm-30%o70%m	0.20

* Recovery from multiple tests

Gas Rates

	Choke (inches)	Pressure (psig)	Gas Rate (Mcf/d)



**TRILOBITE
TESTING, INC**

DRILL STEM TEST REPORT

Berexco LLC.

23 1s 36w Rawlins Ks.

2020 N. Bramblewood
Wichita Ks.
67206
ATTN: Pete Vollmer

Michael #1-23

Job Ticket: 56791

DST#: 6

Test Start: 2014.02.18 @ 15:00:00

GENERAL INFORMATION:

Formation: **LKC-D,E**
 Deviated: No Whipstock: ft (KB)
 Test Type: Conventional Bottom Hole (Reset)
 Time Tool Opened: 17:25:30 Tester: Chuck Kreutzer Jr.
 Time Test Ended: 01:06:00 Unit No: 61
 Interval: **4382.00 ft (KB) To 4434.00 ft (KB) (TVD)** Reference Elevations: 3284.00 ft (KB)
 Total Depth: 4434.00 ft (KB) (TVD) 3271.00 ft (CF)
 Hole Diameter: 7.88 inches Hole Condition: Good KB to GR/CF: 13.00 ft

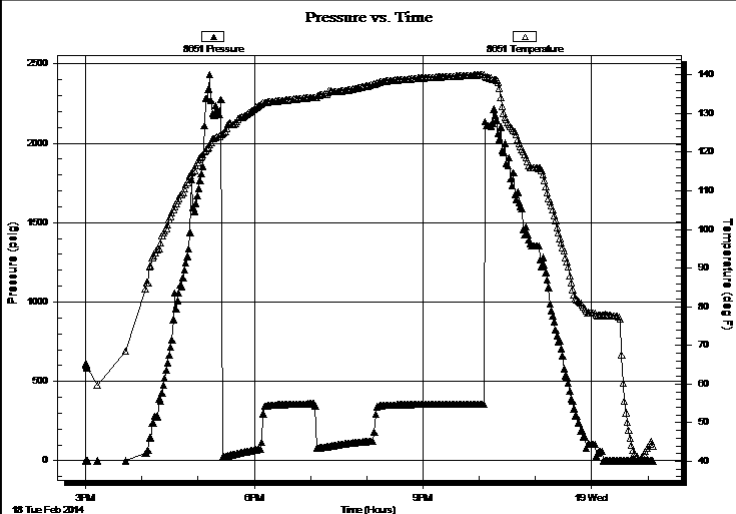
Serial #: 8651

Outside

Press@RunDepth: psig @ 4383.00 ft (KB)
 Start Date: 2014.02.18 End Date: 2014.02.19
 Start Time: 15:00:01 End Time: 01:06:00

Capacity: 8000.00 psig
 Last Calib.: 2014.02.19
 Time On Btm:
 Time Off Btm:

TEST COMMENT: IF: Weak surface blow over 30 mins.
 IS: No blow back
 FF: No blow
 FS: No blow back



PRESSURE SUMMARY

Time (Min.)	Pressure (psig)	Temp (deg F)	Annotation

Recovery

Length (ft)	Description	Volume (bbl)
92.00	mud-100%m	0.45
92.00	vsocm-5%o95%m	0.45
40.00	socm-30%o70%m	0.20

Gas Rates

	Choke (inches)	Pressure (psig)	Gas Rate (Mcf/d)

* Recovery from multiple tests



**TRILOBITE
TESTING, INC**

DRILL STEM TEST REPORT

FLUID SUMMARY

Berexco LLC.

23 1s 36w Rawlins Ks.

2020 N. Bramblewood
Wichita Ks.
67206
ATTN: Pete Vollmer

Michael #1-23

Job Ticket: 56791

DST#: 6

Test Start: 2014.02.18 @ 15:00:00

Mud and Cushion Information

Mud Type: Gel Chem
Mud Weight: 10.00 lb/gal
Viscosity: 65.00 sec/qt
Water Loss: 6.40 in³
Resistivity: ohm.m
Salinity: 700.00 ppm
Filter Cake: 2.00 inches

Cushion Type:
Cushion Length: ft
Cushion Volume: bbl
Gas Cushion Type:
Gas Cushion Pressure: psig

Oil API: deg API
Water Salinity: ppm

Recovery Information

Recovery Table

Length ft	Description	Volume bbl
92.00	mud-100%m	0.452
92.00	vsocm-5%o95%m	0.452
40.00	socm-30%o70%m	0.197

Total Length: 224.00 ft Total Volume: 1.101 bbl

Num Fluid Samples: 0

Num Gas Bombs: 0

Serial #:

Laboratory Name:

Laboratory Location:

Recovery Comments:

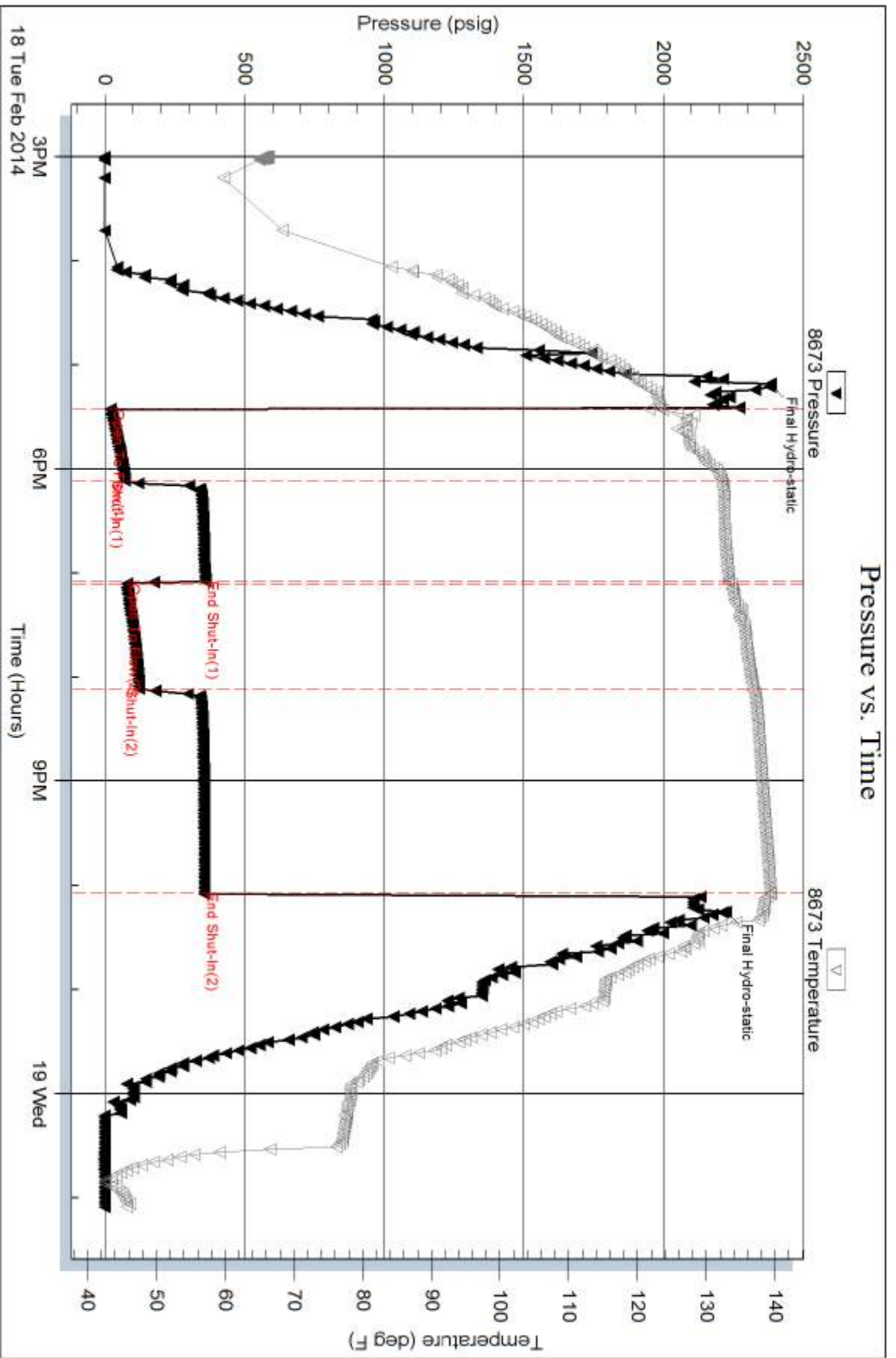
Serial #: 8673

Inside

Berexco LLC.

Michael #1-23

DST Test Number: 6



Trilobite Testing, Inc

Ref. No: 56791

Printed: 2014.02.19 @ 07:52:01

Serial #: 8651

Outside Berexco LLC.

Michael #1-23

DST Test Number: 6

